

Phenolic Resin Analysis on Agilent PLgel MIXED-E with Gel Permeation Chromatography

Application Note

Materials Testing and Research, Polymers

Authors

Greg Saunders and Ben MacCreath
Agilent Technologies, Inc.
Essex Road
Church Stretton
S46 6AX
UK

Introduction

Phenol-formaldehyde reactions produce two main products, novolacs (under acidic conditions) and resols (under basic conditions with excess aldehyde).

Gel permeation chromatography of both types is simple with Agilent PLgel 3 μm MIXED-E columns. These columns are ideal for low molecular weight samples that contain oligomeric fractions, as well as polymers, up to 30,000 MW.



Agilent Technologies

Analysis of a phenol resins

Chromatograms showing excellent oligomeric detail were produced for acidic and basic phenolic resins (Figure 1), when using ultra high efficiency PLgel 3 μ m MIXED-E columns. For more difficult polar resins, Agilent PolarGel columns are preferred, since these are designed for use with polar solvents such as dimethyl formamide and dimethyl sulfoxide, and for solvent combinations such as tetrahydrofuran with water.

Conditions

| | |
|-----------|---|
| Column | 2 \times Agilent PLgel 3 μ m MIXED-E, 300 \times 7.5 mm (p/n PL1110-6300) |
| Eluent | THF |
| Flow rate | 1.0 mL/min |
| Detector | UV |
| System | Agilent PL-GPC 50 |

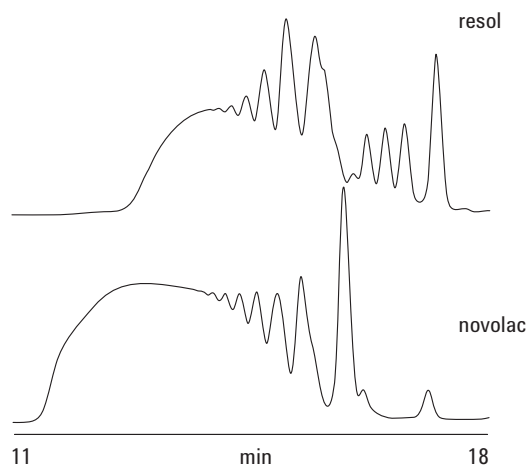


Figure 1. Excellent oligomeric detail in the analysis of phenolic resins produced under acidic and basic conditions on an Agilent PLgel 3 μ m MIXED-E two-column set.

For More Information

For more information on our products and services, visit our Web site at www.agilent.com/chem.

www.agilent.com/chem

Agilent shall not be liable for errors contained herein or for incidental or consequential damages in connection with the furnishing, performance, or use of this material.

Information, descriptions, and specifications in this publication are subject to change without notice.

© Agilent Technologies, Inc., 2011
Printed in the USA
April 21, 2011
5990-7987EN



Agilent Technologies