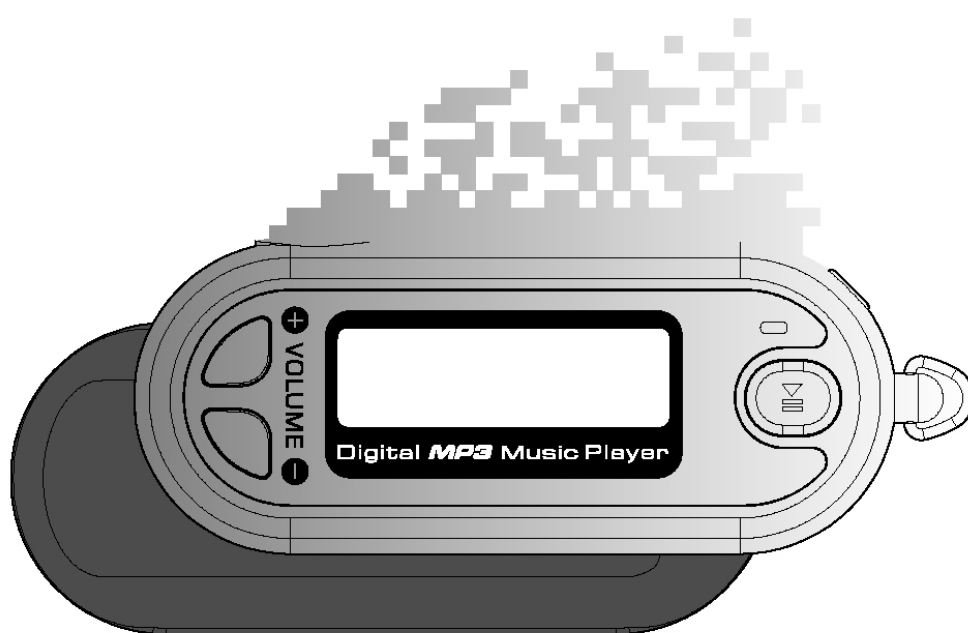


■ INSTRUCTION MANUAL ■

Rollei

■ Rollei MP3 Player ek220/ek230

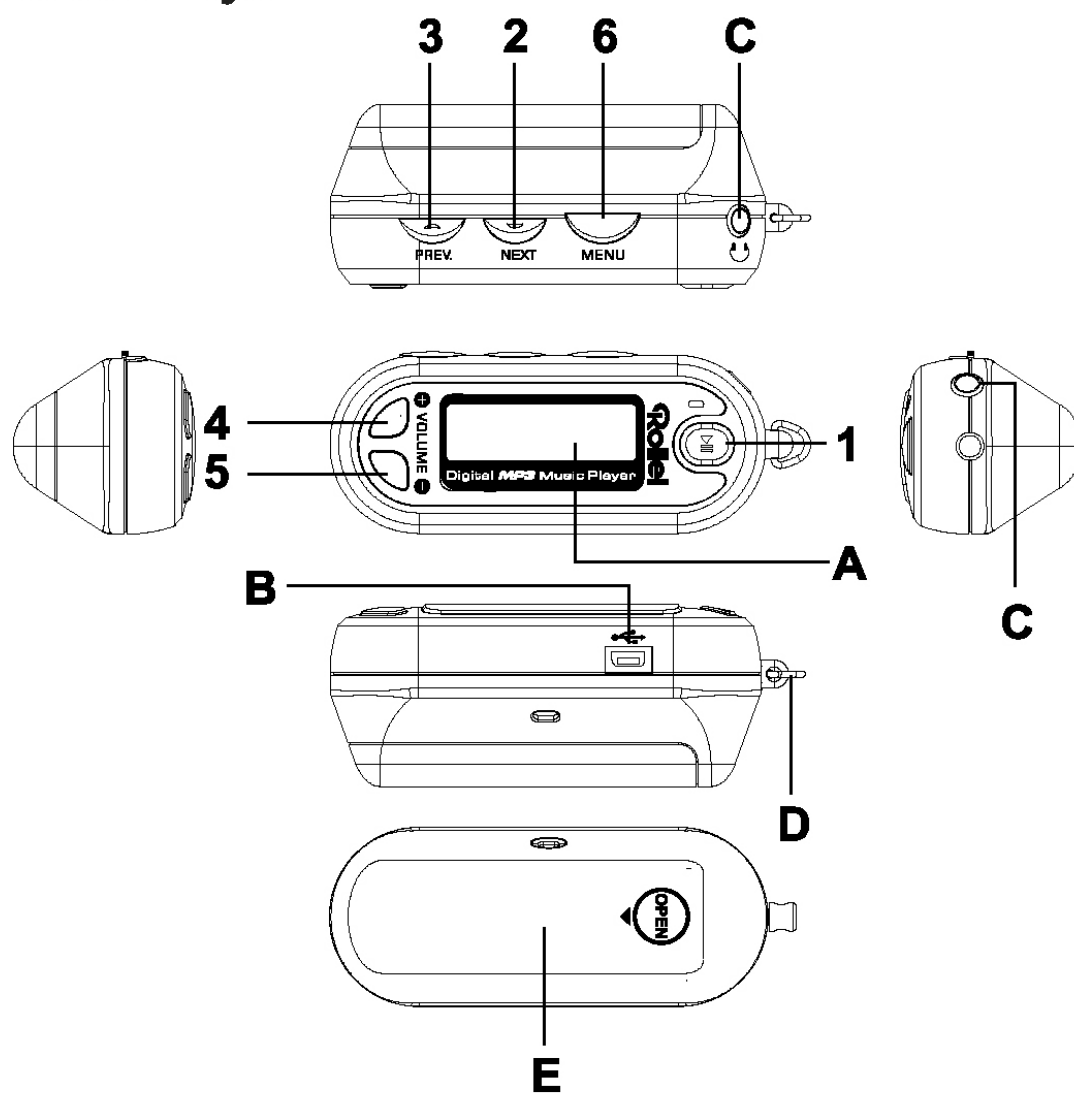


■ Table of Contents

<i>Table of Contents</i>	<i>01</i>
<i>Name of Controls & Indicators</i>	<i>02~03</i>
<i>Accessories</i>	<i>04</i>
<i>LCD Display</i>	<i>05</i>
<i>Getting Playback Started</i>	<i>06~07</i>
<i>Getting Voice Recording Started</i>	<i>08</i>
<i>Adjusting Menu Mode</i>	<i>09~13</i>
<i>Operating the FM Radio</i>	<i>14~15</i>
<i>Operating with Computer</i>	<i>16~20</i>
<i>Software Utilities</i>	<i>21~25</i>
<i>Electronic Feature</i>	<i>26</i>
<i>Safety Notices</i>	<i>27</i>
<i>Troubleshooting</i>	<i>28</i>
<i>Regulatory Information</i>	<i>29~30</i>

■ Name of Controls & Indicators

Portable MP3 Player



■ Name of Controls & Indicators

Music Mode

NO	Name	Description	NO	Name	Description
01	Play/Pause/Stop	Start Playback / Pause / Stop / Power On / Power Off	A	LCD	Display ID3 Tag & Function Status
02	Next	Skip forward to next track	B	USB Jack	Connect player to computer
03	Prev	Skip backward to previous track	C	Earphone Jack	Connect to Earphone
04	Volume +	Increase the volume level	D	Strap Hole	
05	Volume -	Decrease the volume level	E	Battery Door	
06	MENU	Key Lock Mode / Music / Voice /FM Radio / Setting / Earse / About / Record			

FM Radio Mode

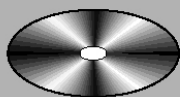
NO	Name	Description
01	Play/Pause/Stop	Fine adjust Channel
02	Next	Increase the FM frequency
03	Prev	Decrease the FM frequency
04	Volume +	Increase the volume level
05	Volume -	Decrease the volume level
06	MENU	FM Hold Mode / Switch to the music mode

Erase File Mode

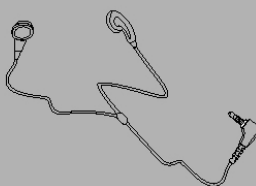
NO	Name	Description
01	Play/Pause/Stop	Power off
02	Next	Skip forward to next mode / track / file
03	Prev	Skip backward to previous mode / track / file
04	Volume +	Toggle between "yes" or "no" mode
05	Volume -	Toggle between "yes" or "no" mode
06	MENU	Quit from the selected mode / quit to the music mode

■ Accessories

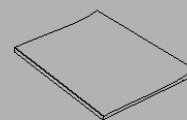
① **Installation CD**



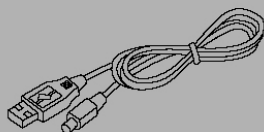
② **Stereo Earphone**



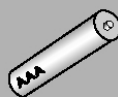
③ **User Manual**



④ **USB Cable**

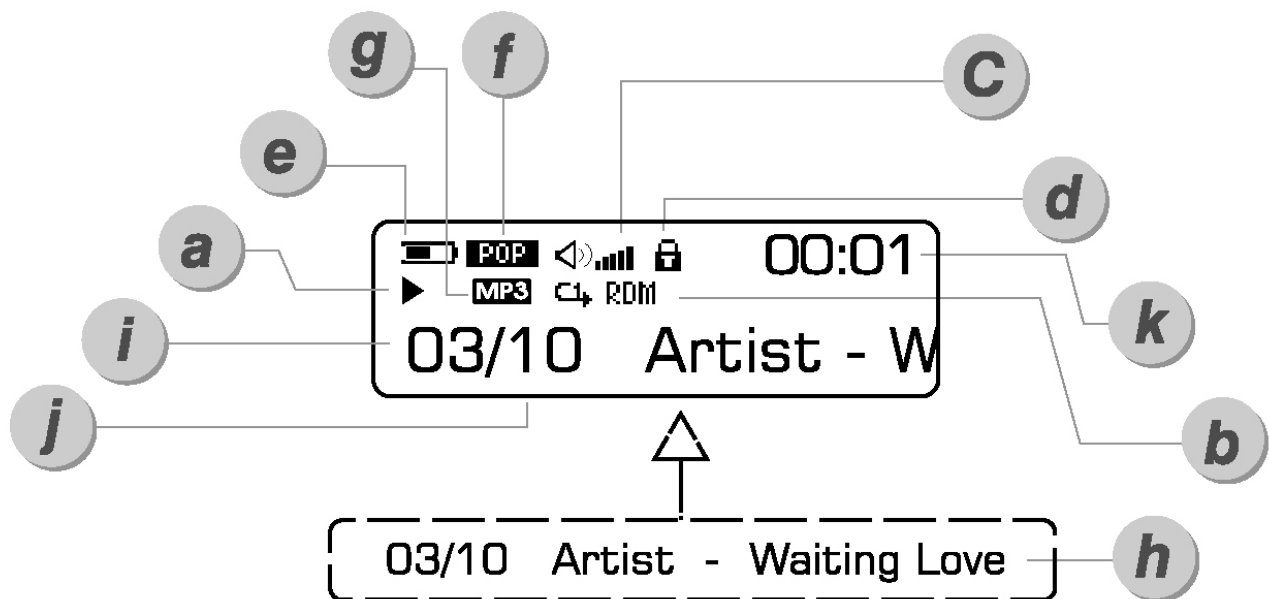


⑤ **AAA Alkaline Battery**



Remark: Accessories and items are subject to change

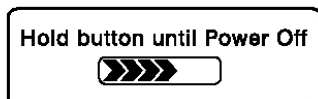
■ LCD Display



- a)** Player status ----- **PLAY ▶, PAUSE ⏸, STOP ■**
- b)** Play mode setting ----- **Repeat the current song ⏮, Repeat all songs ⏭, Random ⏮, Random All ⏭**
- c)** Volume Level
- d)** Hold
- e)** Battery Status
- f)** Equalizer ----- **POP ROCK JAZZ CLASS NORMAL**
- g)** Current music / voice format
- h)** Song title
- i)** Number of track
- j)** Total number of track(s)
- k)** Play time

Getting Playback Started

1. Power ON / OFF



POWER ON

- Press "Play / Pause" to turn on the power; the "MP3 player" logo will be displayed on the LCD.

POWER OFF

- Press and hold "Play / Pause" over 5 seconds to power off until the graphic disappear.

CAUTION: Don't removing the battery while the player is Power On, it will damage the firmware & the Player.

2. Playing Start



When the power is on, the TOC (Table of Content) will be shown on LCD.

3. Playback the Track



- Press "Play / Pause" allows you to toggle between play & pause
- Press and hold "Play / Pause" for 3 seconds to stop playback while playing track

4. Fast Tracking

While the track is being played, press and hold "PREV" or "NEXT" for fast-forward or backward the track.

■ Getting Playback Started

5. Skip / Return Tracking

- Press "NEXT" to skip forward to the next track.
- Press "PREV" to skip backward to the previous track.

6. Digital Volume Control



MAX Level 
Mute 

To adjust the volume, press "VOLUME+" to increase the volume or press "VOLUME-" to decrease the volume from 0 (mute) to 30 (Max Level)

7. Hold Function

- Press "MENU" to enter the Hold mode.
- Press "Play / Pause" allows you to toggle between locking and unlocking the player.



8. Low Battery Indicator



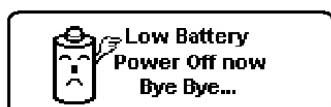
Indicates high battery level.



Indicates medium battery level.



Indicates low battery level.

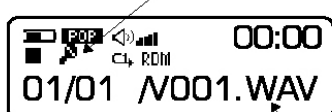


Indicates that the battery level is empty and the player need to replace a new battery.

Getting Voice Recording Started

1. Voice Recording

Voice recording mode Logo



Voice file name

- Press "MENU" and select "Record" icon with "PREV" or "NEXT"
- Press "MENU" for confirming the selection, the player will change to "Record Mode"

The player will record the voice automatically after entering the Record Mode

- Press "MENU" for stop recording the voice, and it will quit the Record Mode at the same time
- Press "MENU" for 3 seconds to return to the Music mode

2. Voice File Playback



Recording icon

Recording time

- Press "MENU" and select "VOICE" icon with "PREV" or "NEXT", the player will change to "Voice Mode"
- Press "PREV" or "NEXT" to skip backward or forward
- Press "Play / Pause" to playback or pause the recorded file
- Press and hold "Play / Pause" for stop
- Press "MENU", it will back to the Voice mode
- Hold "MENU" for 3 seconds and return to the Music mode

■ Adjusting Menu Mode

1. Entry Menu Mode



- Press "MENU" to enter menu mode.
- Press "PREV" and "NEXT" to select the required mode.
- Press "MENU" to confirm the selected mode.

2. Setting



Select "Setting" icon with "PREV" or "NEXT" and press "MENU" for enter the selected mode

a. EQUALIZER SETTING (EQ)

- Select the "EQ" icon in setting list and press "MENU" to enter.
- 5 types of "EQ" settings will be shown on LCD.



b. PLAY MODE SETTING

- Select "Play Mode" icon in setting list and press "MENU" to enter.
- 5 types of play modes will be shown on LCD.
- Press "MENU" to confirm the selection



■ Adjusting Menu Mode

c. CONTRAST SETTING

- Select "Contrast" in setting list and press "MENU" to enter.
- Press "PREV" and "NEXT" to adjust the contrast level.
- Press "MENU" to confirm the selection



d. POWER SAVING

- Select "Power Saving" in setting list.
- Press "PREV" and "NEXT" to select the power saving time.
- Press "MENU" to confirm the selection
- The power saving time measures the idle time of the player and the player will be automatically power off when time is up.



e. VOICE RECORD SETTING

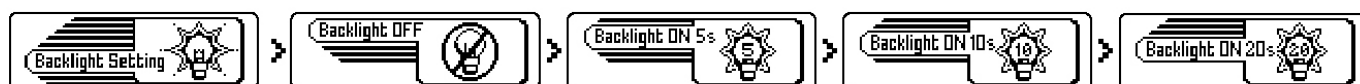
- Select "Record settings" in setting list.
- Adjust the voice recording frequency from 8000Hz to 48000Hz by pressing "PREV" or "NEXT".
- Press "MENU" to confirm voice recording frequency.
- Higher sampling rate, the recording voice gets higher quality. 8000Hz is standard quality and 48000Hz is best quality.



■ Adjusting Menu Mode

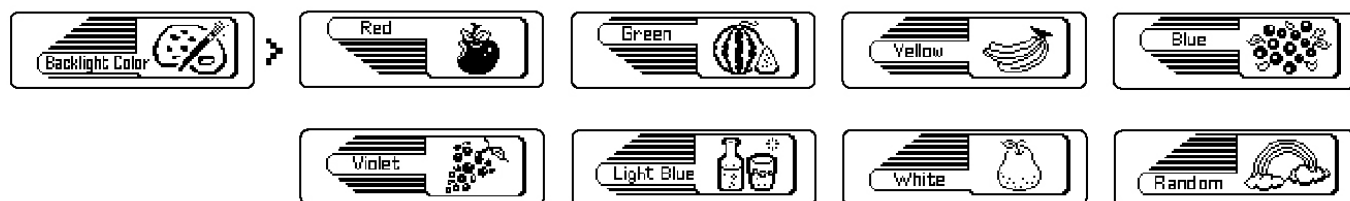
f. BACKLIGHT SETTING

- Select "Backlight Setting" in setting list
- Press "PREV" or "NEXT" to setting the backlight time
- 4 types of backlight time will be shown on the LCD
- Press "MENU" to confirm the selection



g. BACKLIGHT COLOR SETTING

- Select "Backlight Color" in setting list
- Press "PREV" or "NEXT" to select the backlight color
- 7 backlight color will be shown on the LCD
- For "Random" Color selection, the player will change the backlight color when any button is pressed
- Press "MENU" to confirm the selection



h. EXIT

- Select "Exit icon" in setting list
- Press "MENU" to quit from the Setting Mode
- Press and hold "MENU" for 3 seconds to return the Music mode

■ Adjusting Menu Mode

3. Record

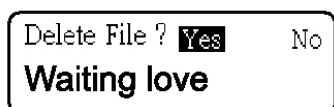
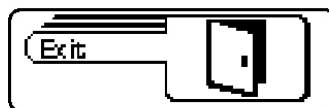
- Select "Record" icon with "PREV" or "NEXT" button
- Press "MENU" to enter the "Record" mode and start Recording
- Press "MENU" to stop
- Press and hold "MENU" return to the Music mode

4. Erase File(s)



- Select "Erase icon" with "PREV" and "NEXT" button
- Press "MENU" to enter,
- Select "Music" or "voice" by pressing "PREV" or "NEXT"
- Press "MENU" to enter the selected mode
- Enter "Music" to delete music files, enter "Voice" to delete voice files

After entering the Erase mode, the procedures are listed in the following:



- Press "PREV" or "NEXT" to select file (s) for delete
- Press volume "+" or "-" to toggle "Yes" or "No" icon.
- Press "Play / Pause" to confirm & delete
- Press and hold "MENU" to go back to the music mode.



Warning: The erased file(s) cannot be recovered in any condition.

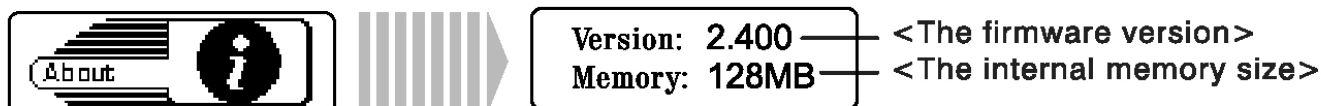
■ Adjusting Menu Mode

5. Music Mode

- Select "MUSIC" icon with "PREV" or "NEXT" button
- Press "MENU" to enter the selected mode
- Press "PREV" or "NEXT" for selecting the track
- Press "PLAY / PAUSE" for playback or pausing the track
- Press "PLAY / PAUSE" for stopping
- Press and hold "PLAY / PAUSE" for power off

6. About Mode

- Select "About" icon and press "MENU" to enter. The player information will be displayed on the LCD.
- Press "MENU" to exit
- Press and hold "MENU" for return to the music mode



■ Operating the FM Radio

- While playing in Music Mode, press "MENU" and select the "FM Radio" with "PREV" or "NEXT".
- Press "MENU" to enter the Radio Mode.

1. FM Tuning

a. Auto Scanning the whole FM band.

- Press "MENU" and select "Auto Scan" with "PREV" or "NEXT"
- Press "MENU" to enter the "Auto Scan"
- Auto scanning will be started.
- Each FM station detected will be stored in the 20 preset memory (previous preset channel will overwrite by new FM station detected)

b. Fine adjust FM Band

- Press "Play / Pause" to remove the "Preset" icon
- Press "PREV" and "NEXT" to adjust FM frequency

c. How to save desired FM band in Memory Channel

- Select the Channel first
- Press "Play / Pause" to remove "Preset" icon
- Adjust "FM" frequency by passing "PREV" and "NEXT"
- Press "NEXT" to increase FM frequency for selecting the channel and "PREV" to decrease FM frequency for selecting the channel
- Press "MENU" and select "Memory Ch" with "PREV" or "NEXT"
- Press "MENU" to enter the "Memory Ch"
- Adjust the channel position by press "PREV" and "NEXT"
- Save the Frequency into the memory channel by press "MENU" to confirm.

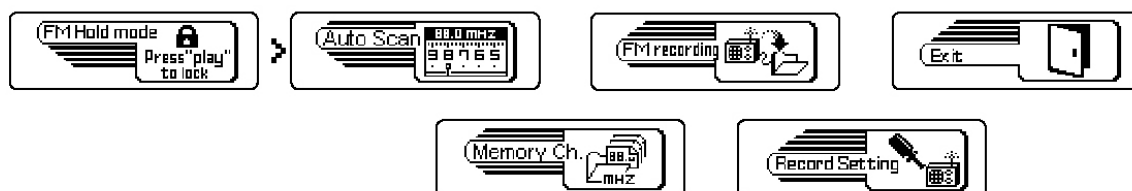
■ Operating the FM Radio

2. FM Recording

- In Radio Mode, press "MENU" to select "FM Recording" with "PREV" or "NEXT".
- Press "MENU" to enter the FM Record Mode and the start recording
- Press "MENU" button again to stop recording.
- The recorded file is saved in the Player memory
- To play a FM recorded file, press and hold "MENU" back to Music Mode.
- Press "PREV" or "NEXT" to select the saved FM files in .wav format in the Music track
- Press "Play/Pause" to play the selected FM file.
- When the memory is not enough, "Memory Full" will appear.
- You are required to free the memory by deleting some files

3. FM Recording Setting

- Select "Record settings" in setting list.
- Adjust the voice recording frequency from 8000Hz to 48000Hz by pressing "PREV" or "NEXT". Press "MENU" to confirm voice recording frequency.
- Higher sampling rate, the recording voice gets higher quality. 8000Hz is standard quality and 48000Hz is best quality.

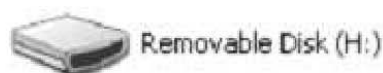


4. Exit

- Select "Exit icon" in setting list
- Press "MENU" for quit from the Setting Mode and return to the FM radio mode

■ Operating with Computer

When connecting the player to your computer, "**Removable Driver, (H:)**" is shown on "**My Computer**", It represents the flash memory of the player. Then, you can upload, download and manage the file(s) in the player by computer.



Firmware Download and Format are enclosed with the bundle CD ROM: **Installation CD**. Please refer to **Software Utilities** for the operation instruction of **Firmware Download and Format**.

1. System Requirements

- Windows ME / 2000 / XP; Mac OS 9 or above
- CD-ROM Drive 4x or above
- Pentium MMX 200 or above
- Minimum 30MB hard disk space
- USB (Universal Serial Bus) port

Note: To install software under Windows 2000 / XP, you must login as an administrator.

2. Software Installation

- a. Insert the Installation CD into your CD-ROM driver,
- b. To start the installation manually: On desktop, click "Start" then "Run", enter D:\Setup.exe (D is the name of CD-ROM drive) and click "OK" to start

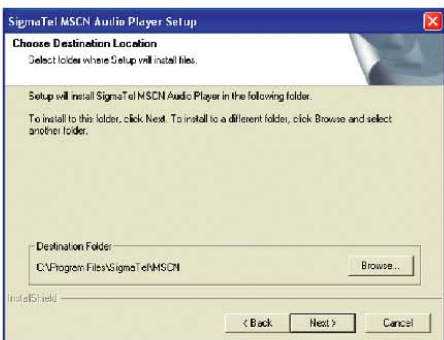
■ Operating with Computer



- c. Following the icon instruction, Click "Next" to continue installation.

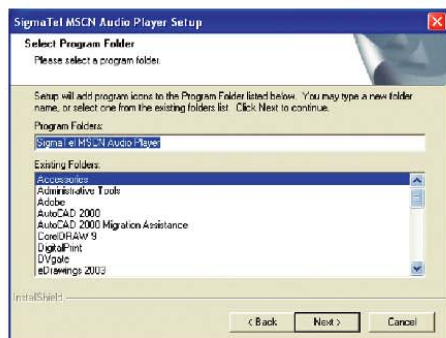


- d. Read the following license agreement carefully. If you agree, select "Yes" to continue. Otherwise, select "No" to exit.



- e. Select "Next" to continue, the installation is C:\Program Files \WeWa!! MP3 Digital Music Player a directory will be created.

Operating with Computer



f. Click "Next" to continue



g. Click "Finish" to continue

3. Computer Connection



- Switch on the computer.
- Switch off the player.
- Connect the player and the computer via USB cable
- Press "Play / Pause" to power on the player.
- "Ready" will be appeared on the LCD display when the connection is established.

Caution: MP3 player must be POWER OFF when connecting to computer. After finishing the USB cable connection, MP3 player can be POWER ON safely.

■ Operating with Computer

4. Disconnect from the computer



When there is no data transmission, you can unplug the player from the computer.



Safety remove the player from Window's desktop by following the "Windows Safety Remove Hardware" instructions before physically disconnecting the cable

Caution: Do not unplug the player when "Read" or "Write" icon is showing on the LCD display.



1. By double click the hardware removal icon, the box of "Safely Remove Hardware" appear



2. Click "Stop" for continue



3. Click "OK" to confirm

Operating with Computer



4. You can remove the player from Window's desktop after the dialogue appear.

Note: The circuitry of the player and the computer could be seriously damaged if the USB cable is unplugged not following the instruction under Windows ME / 2000 / XP.

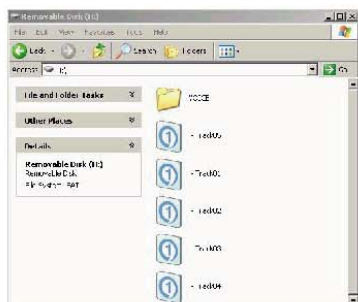
5. Driver Installation

After connecting the player to computer via USB port, the computer detects new hardware as a "Removable Drive, (H:)" is shown on "My Computer", which represents the flash memory of the player.



Removable Disk (H:)

6. File Transferring



- From "My Computer", select the mp3 files for copying.
- High-light the file.
- Right Click the mouse and select "Copy"
- Open the "Removable Drive (H:)" from "My Computer"
- Right Click the mouse and select "Paste" on the "Removable Drive (H:)" for transferring the files into the player.

Note: All the voice recording files are located at VOICE directory

7. Software Un-installation

On Windows Desktop, click "Start" and then "Programs". From Program, select "Sigma Tel MSCN Audio Player" then click "Uninstall". The software Sigma Tel MSCN Audio Player will be removed automatically

■ Software Utilities

From the CD ROM, Installation CD. There is a software utility bundling with the player: MSCN Firmware Download.

Remarks:

Some memory space in Flash Memory is reserved for Firmware Upgrade Features. Therefore, usable memory space will be less than 128MB/256MB, where applicable.

MSCN Firmware Download

It is utility for updating firmware of the player. It can also be downloaded if your player stops responding or not functioning.

CAUTION: Please note that ALL DATA in the flash memory may be lost after downloading the firmware. Please back up your data before running the software utilities.

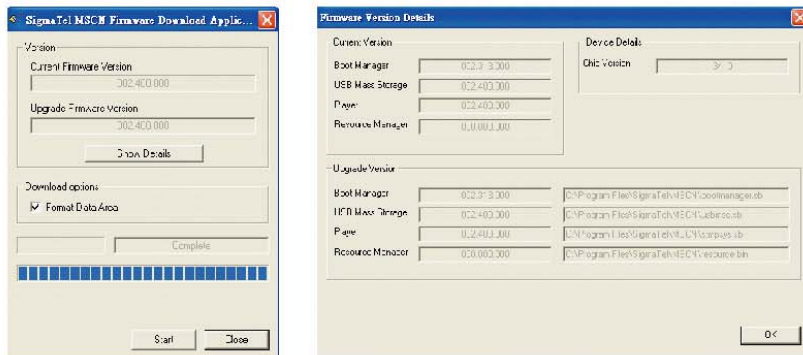
Connect and download the Firmware to the player

- Switch On the computer
- Switch Off the player.
- Connect the player to the computer via the USB cable.
- Press "Play / Pause" to Power On the player
- To enter Firmware Download, click on "Start" and select "Program" on Windows Desktop. From "Program", select "Digital Music Player", then click on "Firmware Download"

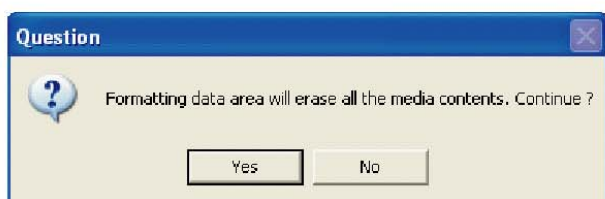
Warning: The player MUST NOT be disconnected from the computer when the player is under accessing. The circuitry and firmware of the player may be damaged seriously.

Software Utilities

- A MSCN Firmware Download box is shown

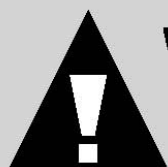
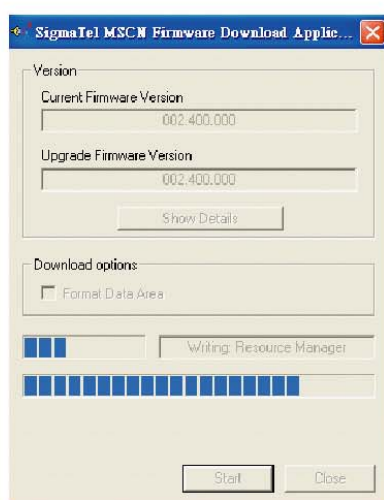


- Press "Show Details" to see the Current and Upgraded Firmware Version
- On Download Options, there are two selections:
- Click the checkbox for format the MP3 Player Flash Memory. ALL DATA WILL BE ERASED.
- Unclick the checkbox for download the Firmware only. MP3 Player Flash Memory will not be formatted.
- If click the checkbox, the Question Box is shown.
- Click "YES" for confirm and "NO" for cancelled



- Click "Start" to process the firmware upgrade.
- Wait until the status bar is full
- Click on "Close" button when download is finished
- Download is completed.

■ Software Utilities



Warning: ALL DATA WILL BE ERASED AFTER CLICK THE CHECKBOX. PLEASE BACK UP THE DATA BEFORE DOWNLOADING THE FIRMWARE.

Emergency Mode:

When the player does not function properly, you are required to recover the player by installing the software for Player Recovery Device

- Switch On the computer
- Switch Off the player
- Connect the player to the computer via the USB cable
- Press and hold "Play / Pause" button more than 5 seconds and enter Firmware Download at the same time (To enter Firmware Download, click "Start" and select "Program" on Windows Desktop. From "Program", select "Digital Music Player", then click on "Firmware Download".
- Your computer will take time to search the hardware (player) for 15 seconds
- After click "Firmware Download" , the following box will appear

■ Software Utilities

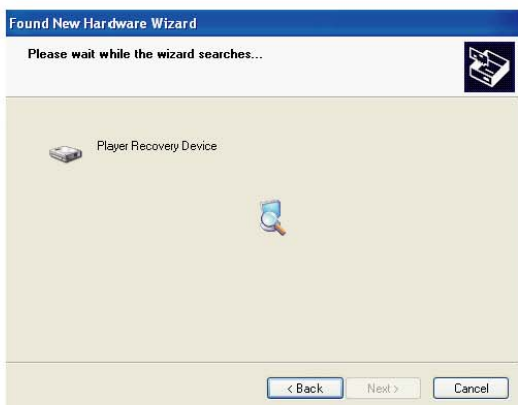


- Click "Next" to continue and waiting for the installation



- Press and hold "Play/ Pause" button until the computer find the new hardware wizard.

■ Software Utilities



- Click "Back" for returning the previous step or click "Canel" for stopping the installation.



- After installation, click "Finish" to close the box

After installing the software for Player Recovery Device, you are required to upgrade the Firmware. The procedure is same as the Firmware Download (please refer to page 21-23)

■ Electronic Feature

Electronic Features

Files Support	WMA & MP3 (Music) / ADPCM (Voice)
Digital Volume Control	30 Levels
Audio Frequency	20-20KHz
Head Phone Output Power	5mW + 5mW (22 OHM)
Signal to Noise Ratio	>80dB
Total Harmonic Distortion	<0.1%
Audio Output	One 3.6 mm Jack
Internal Memory Capacity	32MB / 64MB / 125MB / 256MB
Battery Type	One AAA size battery (Alkaline)
Battery Life Time	Max. 12 hours
PC interface	USB Cable

FM Radio Specification

Frequency Range	87.5-108 MHz
S/N Ratio	40-60 dB
Sensitivity at 30dB S/N	25-31 dB
Stereo Separation	30-40 dB
Audio output Distortion	< 1-2 %

■ Safety Notices

KEEP THE UNIT AWAY FROM DIRECT SUNLIGHT, STORING MAGNETIC FIELDS, EXCESSIVE DUST, HUMIDITY AND ELECTRONIC / ELECTRICAL EQUIPMENT WHICH GENERATE ELECTRONIC NOISE.

USE OF CONTROL, ADJUSTMENTS OR PERFORMANCE OF PROCEDURES OTHER THAN HEREIN MAY RESULT IN A FIRE OR HAZARDOUS RADIATION EXPOSURE.

DO NOT DROP YOUR PLAYER OR LEAVE IT UNDER HEAVY OBJECTS.

TO AVOID ACCIDENT OF ELECTRIC SHOCK, PLEASE DO NOT ATTEMPT TO DETACH THE COVER OF THE PLAYER. CUSTOMER SHOULD CONTACT A QUALIFIED TECHNICIAN REGARDING ANY REPAIR JOB.

DO NOT REMOVE / REPLACE BATTERY DURING OPERATION



WARNING: To prevent fire or shock hazard, Do not expose this appliance to rain or moisture.

■ Troubleshooting

The player does not work.

- Check the capacity of the battery. One 1.5V AAA size battery is required.
- Check the polarity (+ and -) of the battery.



Note : You may use any 1.5V AAA size battery, but alkaline battery tends to last longer.
You can also use a rechargeable AAA size 1.2V Ni-Cd or Ni-MH battery.

The buttons are not functioning.

- Check the **HOLD** function setting. When the "**HOLD**" function is on. All buttons are locked.
- Try reinstalling the battery to reinitialize the player.

Unable to download data.

- Ensure the USB cable is properly connected to your PC and the player.
- Check that the USB driver is installed, on page 15.
- Ensure that there is enough memory to store music or data file(s)

Lost data.

- Occasionally some parts of a data stream may be damaged owing to instability of power while downloading files. In such a case, format to initialize the memory in the player by the utility MP3 Player, page 21.

How many minutes of MP3 files can this player hold?

- It depends on the memory size of the player. A player with 64MB of memory can hold approximately 60 minutes the near CD sound quality MP3 files.

Player is not recognized by the PC.

- Check if the USB cable is connected properly, and if the player is on.
- Check that the USB driver is installed.

Player is not responding and not functioning

- refer to Firmware Download in Software Utilities on page

■ Regulatory Information

Federal Communications Commission (FCC)

This device has been tested and found to comply with the limits for a Class B digital device, Pursuant to Part 15 of the FCC Rules.

Operation is subject to the following two conditions:

1. This device may not cause harmful interference, and
2. This device must accept any interference received, including interference that may cause undesired operation.
3. If your device needs repairs, you must arrange for the manufacturer to make them if you are to keep the device's FCC registration valid.

This equipment, like other electronic equipment, generates and uses radio frequency energy. If not installed and used according to the instructions in this manual, this equipment cause interference with your radio and television reception.

If you think this equipment is causing interference with your radio or television reception, try turning the equipment off and on, If the interference problems stop when the equipment is switched Off, then equipment is probably causing the interference. You may be able to correct the problem by doing one or more of the following:

- Adjust the position of the radio or TV antenna
- Move the device away from the radio or TV

■ Regulatory Information

If necessary, consult your dealer or an experienced radio or television technician.

You may find this booklet helpful: "How to Identify and Resolve Radio and TV Interference Problems" (Stock No. 004-000-00345-4), Prepared by the FCC and available from the U.S. Government Printing Office, Washington, DC 20402. See.

For the customers in Europe

 The CE mark on the Audio Player is valid only for the products marketed in the European Union.



Note: All specifications and design are subject to change without further notice or obligation.

**Rollei Fototechnic Gmbh
P.O. Box 3245
D-38022 Braunschweig
Germany**