

# City line

飞利浦家用真空卧式吸尘器

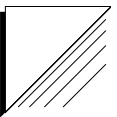
FC8430, FC8428, FC8426,  
FC8424, FC8422

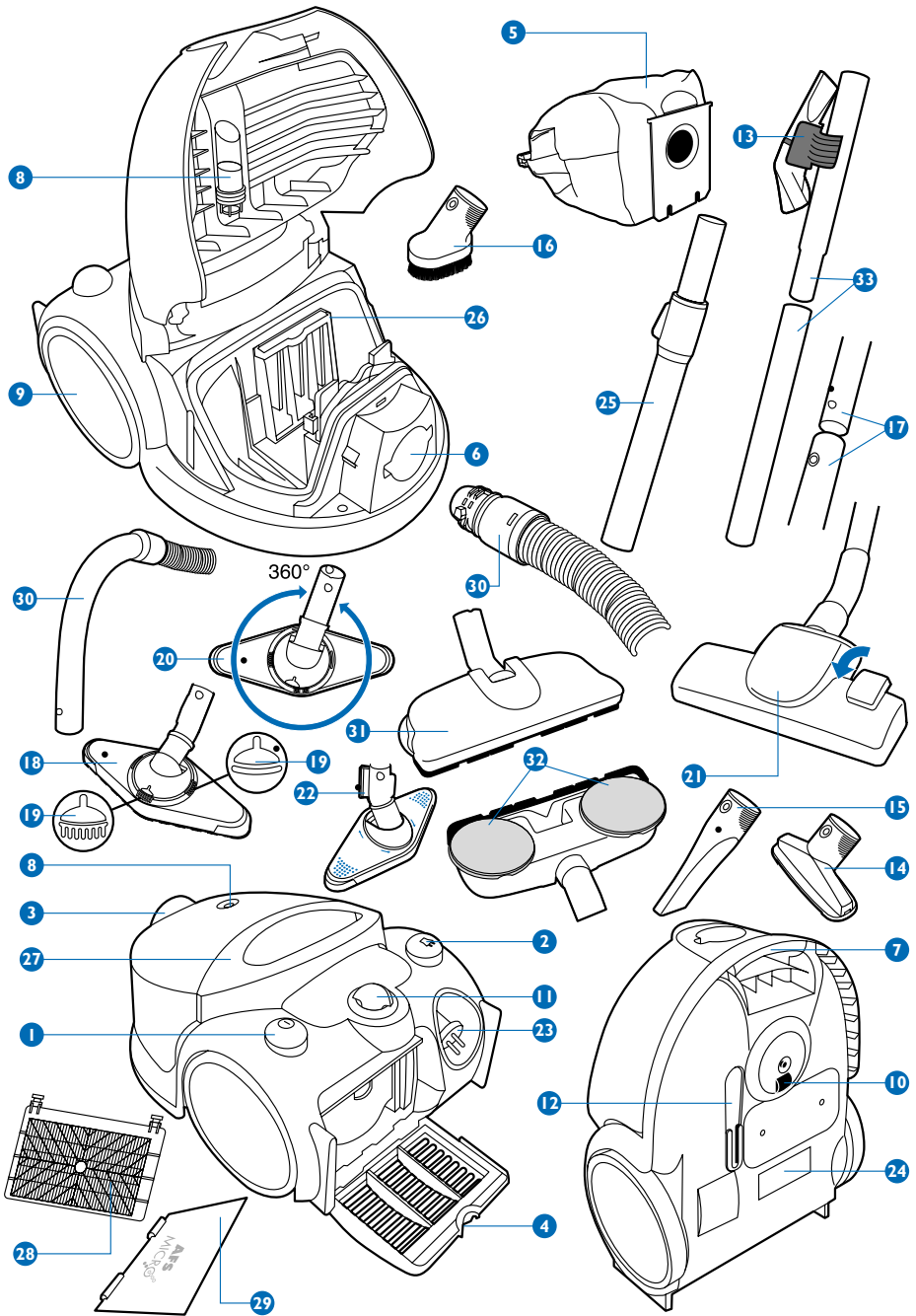


请妥善保管本使用说明书



**PHILIPS**







**ENGLISH 6**

简体中文 II

**Important**

- Only use Philips s-bag™ double-layer paper dustbag (type FC8021), the reusable dustbag if provided or Philips Sydney + double-layer paper dustbags (type HR6999).
- Never suck up water or any other liquid. Never suck up flammable substances and do not suck up ashes until they are cold.
- Only allow children to operate the vacuum cleaner under close supervision.
- Do not point the hose at the eyes or ears nor put it in your mouth when the vacuum cleaner is switched on and the hose is connected to the vacuum cleaner.
- When the vacuum cleaner is used to suck up fine dust, the pores of the dustbag may become clogged, causing the passage of air through the dustbag to become obstructed. As a result, the dustbag-full indicator will indicate that the dustbag needs to be replaced, even though the dustbag is not full at all.
- Never use the appliance without the Motor Protection Filter. This could damage the motor and shorten the life of the appliance.
- If the mains cord of this appliance is damaged, it may only be replaced by Philips or a service centre authorised by Philips, as repair requires special tools and/or parts.

**General description (see picture on page 3)**

- 1 On/Off button
- 2 Cordwinder button
- 3 Opening dustcover
- 4 Opening filtercover
- 5 Dustbag
- 6 Tapturn opening
- 7 Front grip
- 8 Dustbag full indicator
- 9 Rearwheels
- 10 Castor wheel
- 11 Turnknob
- 12 Storage position
- 13 Accessory clip
- 14 Small nozzle
- 15 Crevice tool
- 16 Small brush (FC8428/8430)
- 17 Button coupling (FC8422/8426/8428/8430)
- 18 Reach & Clean nozzle (FC8422/8426/8428/8430)
- 19 Brush indicator
- 20 Turning switch mechanism hard/soft floor
- 21 Convertible nozzle (FC8424)
- 22 Parking ridge
- 23 Plug
- 24 Typeplate
- 25 Telescopic tube (FC8424/8426/8428/8430)
- 26 Motor protection filter
- 27 Top handle
- 28 HEPA Filter (FC8428)
- 29 AFS Filter (FC8422/8424/8426/8430)
- 30 Bend with hose assy
- 31 Twist & Clean nozzle (FC8430)
- 32 Twist & Clean polishing pads
- 33 Tubes (FC8422)

## Connecting accessories

### Hose

---

- 1** To connect the hose to the appliance, push it into the appliance and turn it clockwise (fig. 1).
- 2** To disconnect the hose from the appliance, turn it anticlockwise and pull it out of the appliance.

### Tube

---

#### Conical coupling (specific types only)

- 1** To connect the tubes to the handgrip, insert the narrow section into the wider section while turning it clockwise (fig. 2).

Use the same method to connect the accessories to the tube.

- 2** To disconnect, turn the tube or the accessories anticlockwise and pull.

#### Button coupling (specific types only)

- 1** Connect the tube to the handgrip ("click") (fig. 3).

Use the same method to connect the accessories to the tube.

- 2** To disconnect the tube from the handgrip, push the lock button and pull the tube out of the handgrip (fig. 4).

The accessories are disconnected in the same way.

#### Telescopic tube (specific types only)

- 1** Connect the tube to the handgrip.
- 2** Adjust the tube to the length you find most comfortable during vacuum cleaning. (fig. 5)

### Nozzle

---

#### Convertible nozzle (specific types only)

The convertible nozzle can be used on either carpets or hard floors.

- 1** Connect the convertible nozzle to the tube.
- 2** Push the rocker switch on top of the convertible nozzle with your foot to make the brush strip for cleaning hard floors come out of the nozzle housing (fig. 6).
- 3** Push the rocker switch again to make the brush strip disappear into the convertible nozzle housing (fig. 7).

#### Reach & Clean nozzle (specific types only)

- The Reach & Clean nozzle can be used on either carpets or hard floors. The nozzle can be turned 360 degrees to 4 different positions, allowing you to also vacuum clean hard-to-reach places in an easy way. When the nozzle is positioned lengthwise, the suction power is concentrated at the front side of the nozzle (fig. 8).
  - To adjust the nozzle to the type of floor and the area to be cleaned, put your foot on the indicated spot and then turn the tube until the nozzle is in the required position (fig. 9).
- 1** With the nozzle positioned breadthwise and the brush strip folded out, you can clean large hard floor areas. Turn the tube until the brush strip pops out of the nozzle housing and the nozzle is positioned breadthwise (fig. 10).

- 2** With the nozzle positioned lengthwise and the brush strip folded out, you can vacuum clean small hard floor areas. Turn the tube 90 degrees anti-clockwise until it is positioned lengthwise with the brush strip still folded out of the nozzle housing (fig. 11).
- 3** With the nozzle positioned breadthwise and the brush strip folded in, you can vacuum clean large soft floor areas. Turn the tube 90 degrees anti-clockwise again to position the nozzle breadthwise and to make the brush strip disappear into the nozzle housing (fig. 12).
- 4** With the nozzle positioned lengthwise and the brush strip folded in, you can vacuum clean small soft floor areas. Turn the tube 90 degrees anti-clockwise again until it is positioned lengthwise with the brush strip still folded in (fig. 13).

Crevice tool, small nozzle and small brush (specific types only)

- 1** Connect the crevice tool, small nozzle or small brush directly to the handgrip or to the tube. The crevice tool can be used either for cleaning narrow corners or hard-to-reach places. The small nozzle can be used for vacuum cleaning small areas, e.g. the seats of chairs and sofas. The small brush can be used for cleaning computers, bookshelves etc.

---

#### Accessory clip

---

- The accessory clip can simply be snapped onto the tube.
- The crevice tool and the small nozzle can easily be clicked onto the clip (fig. 14).

### Vacuum cleaning

- 1** Pull the cord out of the appliance and put the mains plug in the wall socket (fig. 15).
- 2** Switch the appliance on by pushing the on/off button on top of the appliance with your foot.
- 3** You can carry the appliance in two ways:
  - Carrying it vertically by lifting it up at the front part of the appliance (fig. 16).
  - Carrying it horizontally by lifting it up by the handle at the top of the appliance.

---

#### Adjusting suction power

---

You can adjust the suction power while vacuum cleaning.

- 1** Adjust the suction power by means of the electronic suction power control (fig. 17).
- 2** Set the turn knob to **MAX** for maximum suction power (fig. 18).  
Use maximum suction power for vacuum cleaning very dirty carpets and hard floors.
- 3** Set the turn knob to **MIN** for minimal suction power.  
Use minimum power for vacuum cleaning curtains, table carpets, etc.

### Storing the vacuum cleaner

- 1** Switch the appliance off and remove the mains plug from the wall socket.
- 2** Rewind the mains cord by pressing the cord rewind button (fig. 19).
- 3** Put the appliance in upright position and attach the nozzle to the appliance by inserting the ridge on the nozzle in the slot (fig. 20).

### Replacing the dustbag

- Replace the dustbag as soon as the "dustbag-full indicator" changes colour (when the nozzle is not placed on the floor) (fig. 21).



- 1** Switch the appliance off and open the cover (fig. 22).
  - 2** Push the dustbag holder backwards (fig. 23).
  - 3** Remove the full dustbag by pulling the cardboard tag, which causes the dustbag to be sealed (fig. 24).
  - 4** Slide the cardboard front of the new dustbag into the two grooves of the dustbag holder. Press it down as far as possible (fig. 25).
  - 5** Pull the dustbag holder forwards (you will hear a click) (fig. 26).  
You cannot close the cover if no dustbag has been inserted.
- D** If provided, you can use the re-usable dustbag instead of paper dustbags. The re-usable dustbag can be used and emptied repeatedly.

For removing and inserting the re-usable dustbag, simply follow the instructions for replacing paper dustbags.

### Ordering dustbags

Philips s-bag™ paper dustbags are available under type number FC8021.

Philips re-usable dustbags are available under number FC8026.

Philips Sydney + double-layer paper dustbags are available under number HR6999.

## Replacing filters

### Motor Protection Filter

Replace the Motor Protection Filter once a year:

- 1** Switch the appliance off and open the cover. Remove the filter.
- 2** Insert a new filter into the holder with the white side visible (fig 27).

### AFS Micro Filter (specific types only)

Replace the AFS Micro Filter every 6 months.

The AFS Micro Filter will remove a large part of the smallest particles from the exhaust air.

- 1** Open the grill and remove the filter (fig. 28).
- 2** Place the sides and the bottom edge of the new filter properly behind the ridges of the holder (fig. 29).
- 3** Put the grill back into the vacuum cleaner by first hooking the bottom edge of the grill into the appliance (1) and then pushing the grill towards the appliance (2) until it snaps home.

Make sure the filter has been placed properly.

### HEPA Filter (specific types only)

Instead of the AFS Micro Filter, some appliances are equipped with the revolutionary HEPA Filter. This filter does not only remove household dust, but also harmful microscopic vermin.

Replace the HEPA Filter at least once a year:

- 1** Open the filter grill and remove the HEPA Filter.
- 2** Place the new filter in the brackets. Make sure that the Philips logo on the filter is visible in the right hand corner (fig. 30).
- 3** Close the filter cover.

### Ordering filters

Two AFS Micro Filters and one Motor Protection Filter are available under type number FC8032.

HEPA Filters are available under type number FC8044.

### Environment

To make recycling possible, the plastics used for this appliance have been coded.

The cardboard packaging has been made of recycled material and is fully recyclable.

### Insufficient suction power

- 1 Check if the dustbag needs to be replaced.
- 2 Check if the filters need to be replaced.
- 3 Check if the electronic suction power control is at its maximum setting.
- 4 Check if the nozzle, tube or hose is blocked up (fig. 31).

To remove the obstruction, disconnect the blocked-up item and connect it (as far as possible) in reverse position. Switch the vacuum cleaner on to force the air through the blocked-up item in opposite direction. Make the airflow suck the obstructing material out of the blocked-up item.

### Information & service

If you need information or if you have a problem, please visit the Philips Web site at [www.philips.com](http://www.philips.com) or contact the Philips Customer Care Centre in your country (you will find its phone number in the worldwide guarantee leaflet). If there is no Customer Care Centre in your country, turn to your local Philips dealer or contact the Service Department of Philips Domestic Appliances and Personal Care BV.

## 注意事项

- ▶ 使用产品前请仔细阅读本使用说明书，并妥善保管以备将来参考。
- ▶ 只能使用飞利浦 Philips s-bag™ 双层纸制集尘袋（型号 FC8021）、随附的循环使用集尘袋或飞利浦 Sydney+ 双层纸制集尘袋（型号 HR6999）。
- ▶ 切勿吸取水或其它液体。切勿吸取易燃物质，并且不要吸取未冷却的灰烬。
- ▶ 儿童只可在有人监督下才能使用吸尘器。
- ▶ 在吸尘器电源打开并且软管与吸尘器相连时，不要将软管指向双眼或耳朵，也不要将其放在口中。
- ▶ 当使用吸尘器来吸取极细的灰尘，集尘袋的洞孔可能会阻塞。这将会使集尘袋已满指示灯显示集尘袋已满、需要更换，即使集尘袋并没有装满。
- ▶ 切勿在未安装马达保护滤网的情况下使用吸尘器。这将会使马达受损，并缩短吸尘器的使用寿命。
- ▶ 如果吸尘器电源线损坏，只有飞利浦或由飞利浦授权的服务中心方可进行更换，因为更换需要特殊的工具和/或零件。

## 一般说明（请参见第 3 页上的图片）

- 1 On/Off（开/关）按钮
- 2 电线回卷按钮
- 3 打开集尘盖
- 4 打开滤网盖
- 5 集尘袋
- 6 软管接口
- 7 前方握把
- 8 集尘袋已满指示灯
- 9 后轮
- 10 脚轮
- 11 吸力控制旋钮
- 12 吸嘴夹片插槽
- 13 附件夹
- 14 小号吸嘴
- 15 缝隙吸嘴
- 16 毛刷（FC8428/8430）
- 17 按钮连结（FC8422/8426/8428/8430）
- 18 洁玲珑吸尘嘴（FC8422/8426/8428/8430）
- 19 毛刷指示
- 20 硬地板/地毯的旋转开关机制
- 21 两用（地板/地毯）吸尘嘴（FC8424）
- 22 供竖立放置的夹件
- 23 插头
- 24 型号铭牌

## 12 简体中文

- 25 伸缩式吸管 (FC8424/8426/8428/8430)
- 26 马达保护滤网
- 27 顶部手柄
- 28 HEPA 滤网 (FC8428)
- 29 AFS 滤网 (FC8422/8424/8426/8430)
- 30 弯管装置
- 31 洁旋风吸尘嘴(FC8430)
- 32 洁旋风吸尘嘴微细纤维软垫
- 33 硬管 (FC8422)

### 连接附件

#### 软管

- 1** 要将软管连接，将软管推入吸尘器并以顺时针方向旋转即可（图1）。
- 2** 要将软管从吸尘器上拆下，请将管端逆时针方向转动，并拉出软管。

#### 硬管

圆锥型连结（仅限于特定机型）

- 1** 要将硬管与握把连接起来，请将窄的部分插入宽的部分，同时顺时针方向旋转（图2）。用同样的方法将硬管和附件连接。
- 2** 要断开连接，逆时针方向旋转硬管或附件，拔出即可。

按钮连结（仅限于特定机型）

- 1** 将硬管与握把连结起来（发出咔哒一声）（图3）。用同样的方法将硬管和附件连接。
- 2** 要断开硬管和握把的连结，推动锁定按钮并将硬管从握把中拔出即可（图4）。可用相同方法取下附件。

伸缩式吸管（仅限于特定机型）

- 1** 将硬管与握把连接起来。
- 2** 将硬管调整到在吸尘过程中感觉最舒适的长度（图5）。

#### 吸嘴

两用（地板/地毯）吸尘嘴（仅限于特定机型）  
在地毯或硬地板上均可使用两用（地板/地毯）吸尘嘴。

- 1** 将两用（地板/地毯）吸尘嘴与硬管连接起来。
- 2** 用脚按下两用（地板/地毯）吸尘嘴顶部的刷毛转换块，使清洁硬式地板的刷条从吸嘴中伸出来（图6）。
- 3** 再次按下两用（地板/地毯）吸尘嘴顶部的刷毛转换块，使刷条收缩向吸嘴中（图7）。

洁玲珑吸尘嘴（仅限于特定机型）

- 洁玲珑吸尘嘴可以用在地毯或硬式地板上。吸嘴可以调整成4个不同的角度，让您可以轻松清洁难以清理的地方。当吸嘴纵向定位时，吸力集中在吸嘴的前端（图8）。
  - 要根据地板的类型及要清洁的位置来调整吸嘴，请用脚踩住图示的位置，然后转动硬管直到吸嘴呈现您所需的角度为止（图9）。
- 1** 将吸嘴横向平放并使刷条外翻，您可以清洁大面积的硬式地板。请转动吸嘴直到刷条从吸嘴伸出，且吸嘴呈横向平放的位置（图10）。

- 2** 将吸嘴直放并使刷条外翻，您可以清洁小面积的硬式地板。请将吸嘴顺时针方向转动 90 度，直到吸嘴呈直放角度，且刷条外翻为止（图 11）。
- 3** 将吸嘴平放并使刷条内翻，您可以清洁大面积的地毯。请将吸嘴再次顺时针方向转动 90 度，使吸嘴呈平放角度，并使刷条没入吸嘴中（图 12）。
- 4** 将吸嘴直放并使刷条内翻，您可以清洁小面积的地毯。请将吸嘴再次顺时针方向转动 90 度，使吸嘴呈直放角度，且刷条仍保持内翻（图 13）。

缝隙吸嘴、小号吸嘴和毛刷（仅限于特定机型）

- 1** 将缝隙吸嘴、小号吸嘴和毛刷直接连接到握把或吸管上。  
缝隙吸嘴可以用来清洁狭窄角落或难以清理的位置。  
小型吸嘴可以用来进行小面积的清洁，例如椅垫及沙发。  
毛刷可以用来清洁电脑、书架等物品。

## 附件夹（仅限于特定机型）

- 附件夹可简单地扣合在吸管上。
- 缝隙吸嘴和小号吸嘴可轻松固定在附件夹上（图 14）。

## 使用吸尘器

- 1** 将电线从吸尘器中拉出，并将插头插入电源插座中（图 15）。
- 2** 用脚压下吸尘器顶部的 on/off（开/关）按钮来开启电源。
- 3** 有两种方法可提起吸尘器：
  - 通过提升吸尘器前方的握把将其垂直提起（图 16）。
  - 通过提升吸尘器顶部的手柄将其水平提起。

## 调整吸力

在进行清洁时，您可以调整吸尘器的吸力。

- 1** 通过电子吸力控制的方法调整吸力（图 17）。
- 2** 将旋钮设置到 MAX（最大）获得最大吸力（图 18）。  
使用最大吸力清洁脏污程度高的地毯和硬面地板。
- 3** 将旋钮设置到 MIN（最小）获得最小吸力。  
使用最小吸力清洁窗帘、桌罩等物品。

## 真空吸尘器的存放

- 1** 关闭电源，并将插头从电源插座拔出。
- 2** 按下电源线回卷按钮将电线回卷到吸尘器中（图 19）。
- 3** 将吸尘器直立起来并通过将吸嘴上的夹片插入槽中，将吸嘴和吸尘器连接起来（图 20）。

## 更换集尘袋

- 在集尘袋已满指示灯的颜色改变时（在吸嘴没有贴紧地板的情况下），请立即更换集尘袋（图 21）。
  - 1** 关闭吸尘器电源并打开机盖（图 22）。
  - 2** 将集尘袋固定架向后推（图 23）。

## 14 简体中文

**3** 拉起纸板片将装满灰尘的集尘袋拉出，纸板片可保持集尘袋密封（图 24）。

**4** 将新的集尘袋的纸板片套入集尘袋固定架上的两个狭槽中。尽量向下按（图 25）。

**5** 将固定架向前推（您会听见咔哒一声）（图26）。

如果没有装入集尘袋，您将无法关闭上盖。

**D** 如有提供，您可以使用随附的循环使用集尘袋代替纸质集尘袋。循环使用集尘袋可于灰尘倒空后重复使用。

要取下和安装循环使用集尘袋，只需遵循更换纸质集尘袋的说明即可。

### 订购集尘袋

---

飞利浦 s-bag™；纸制集尘袋的供应型号是 FC8021。

飞利浦循环使用集尘袋的供应型号是 FC8026。

飞利浦Sydney + 双层纸质集尘袋的供应型号是 HR6999。

### 更换滤网

---

#### 马达保护滤网

---

每年更换一次马达保护滤网。

**1** 关闭产品电源并打开机盖。取出滤网。

**2** 将新的滤网插入固定架中，白色的一面向外（图 27）。

#### AFS 微尘过滤网（仅限于特定机型）

---

每 6 个月更换一次 AFS 微尘过滤网。

AFS 微尘过滤网可以过滤掉排出空气中的大部分细小微粒。

**1** 打开格栅并取出滤网（图 28）。

**2** 请将新滤网的两侧置于固定架边缘位的正后方（图 29）。

**3** 将格栅重新安装到吸尘器上，方法是首先将格栅底部钩在吸尘器(1)中，然后(2)推动格栅直到其扣合到位。

确保滤网安装正确。

#### HEPA 滤网（仅限于特定机型）

---

部分吸尘器使用全新的 HEPA 滤网取代了 AFS 微尘过滤网。此滤网不仅可去除家庭中的灰尘，也可去除有害的微小寄生虫。

最少每年一次更换 HEPA 滤网。

**1** 打开滤网格栅并取出 HEPA 滤网。

**2** 将滤网放在支架中。确保在右侧角落中可以看到滤网上的飞利浦标志（图 30）。

**3** 关闭滤网盖。

#### 订购滤网

两个 AFS 微尘过滤网和一个马达保护滤网的型号是 FC8032。

HEPA 滤网的型号是 FC8044。

### 环保

---

为实现回收利用，我们对此吸尘器中使用的塑料进行了编号。

包装纸箱也由再生材料制成，完全可以回收。

## 吸尘力不足

- 1 检查是否需要更换集尘袋。
- 2 检查是否需要更换滤网。
- 3 检查吸力控制旋钮是否设置于最强力位置。
- 4 检查吸嘴、硬管或软管是否被阻塞（图 31）。  
要清除阻塞物，请将阻塞的部分拆下，并将它以相反方向连接妥当。启动吸尘器，使气流以反方向通过阻塞部分。确保气流将阻塞物从阻塞的部位推出。

## 信息和维修

如果您需要更多信息或有问题，请访问飞利浦的网站 [www.philips.com](http://www.philips.com) 或联系您所在国家的飞利浦客户服务中心（您将在全球商品保证书中找到电话号码）。如果您所在的国家没有客户服务中心，请联系当地的飞利浦经销商或联系飞利浦小家电及个人护理 维修部门。

### 产品型号/规格

型号	额定功率	额定电压/ 频率
FC8422 (有调)	1400W	220V~ 50Hz
FC8426 (有调)	1500W	220V~ 50Hz
FC8430 (有调)	1500W	220V~ 50Hz

### 产品附件名称及数量

名称/ 数量	FC8422	FC8426	FC8430
软管	1	1	1
金属吸管	2	-	-
伸缩吸管	-	1	1
缝隙吸嘴	1	1	1
小号吸嘴	1	1	1
毛刷	-	-	1
附件夹	1	1	1
洁玲珑吸尘嘴	1	1	1
洁旋风吸尘嘴	-	-	1
循环使用集尘袋	1	1	1
S-bag™ (双层纸制集尘袋)	1	1	1

## 注意事项

### 维护和保养

- 除说明书上注明允许使用者进行维护和保养的项目外，其他的维护和保养的项目必须由飞利浦指定的维修中心进行。
- 切勿让儿童使用此产品。
- 当使用完毕或离开时，要切断电源。
- 当吸尘器与吸尘软管连接，并接上电源后，切勿将吸尘软管靠近眼睛、耳朵或放进口中。
- 对产品在使用时如出现异常的情况(如噪音、气味、温度升高、烟雾等)应立即切断电源，停止继续使用。
- 使用者可联系飞利浦全国顾客免费服务热线、当地的飞利浦办事处或飞利浦维修中心进行咨询。

### PHILIPS

产品 : 飞利浦家用真空  
卧式吸尘器  
型号 : FC 8422 / FC 8426  
FC 8430  
额定电压 : 220V ~  
额定频率 : 50Hz  
额定输入功率 : 1400瓦-适用于  
FC8422  
1500瓦-适用于  
FC8426 / FC8430  
产地 : 中国



春飞家用电器有限公司  
中国苏州新区玉山路  
邮编：215011 电话：0512-6825 3516

全国顾客免费服务热线：800 8203 678

本产品根据国标GB4706.1-1998及GB4706.7-1999制造  
本产品根据国标GB4343-1995及GB17625.1-1998制造

请妥善保管本使用说明书  
发行日期：04/2003



