

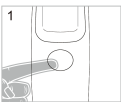
**Non-Contact Infrared Forehead Thermometer
with Digital LED Display - White**

Model B2355238

Read this manual thoroughly prior to installation, operation or maintenance. Keep these instructions in a safe location for future reference. For questions, visit globalindustrial.com or contact Customer Service at 1-800-645-2986.



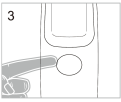
Measure the forehead with a distance between 1/2" to 2".



1. Turn the thermometer on by pressing the ON/OFF/MEASURE button. The device beep and the temperature unit icon (°C) will flash on the LED display screen. To change from °C to °F, refer to the 'Changing Measurement Unit' section of this manual.



2. Place the thermometer sensor point at the forehead, press and hold the "ON/OFF/MEASURE" button for roughly 1 second and release. The thermometer will beep and display the accurate temperature. Whenever consecutive readings are required, please wait for the °C or °F symbol to flash. The above procedure can be repeated as many times as required.

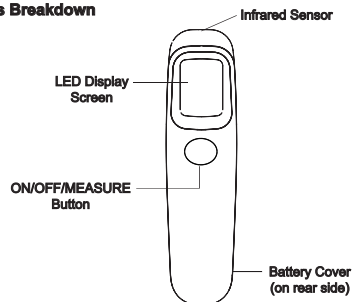


3. To turn off the device press and hold the "ON/OFF/MEASURE" button for roughly 5 seconds. The thermometer will also turn off automatically if idle for 60 seconds.

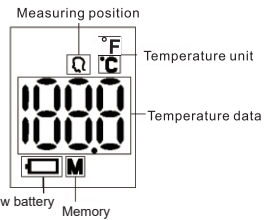
1

2

Parts Breakdown



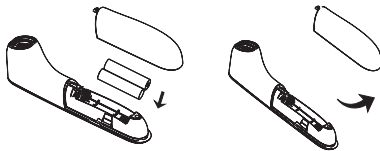
LED Display Information



- **Measuring Position:** This icon flashes to indicate sensor is in the correct position when taking a measurement.
- **Temperature Data:** The temperature will display here after a measurement has been completed.
- **Temperature Unit:** Displays °C or °F - the current temperature measurement unit being used. To switch from °C to °F, refer to the 'Changing Measurement Unit' section of this manual.
- **Low Battery:** This icon flashes when the thermometer has low battery. Replace batteries immediately.
- **Memory:** This icon will be displayed when the thermometer is currently in the memory query mode.

Loading and Replacing Batteries

- Locate the battery cover on the rear side of the thermometer.
- Remove the cover by pressing and pushing upward diagonally.
- Install 2 AAA batteries (not included).
- Reattach battery cover.



- Caution:**
- Remove batteries if the thermometer is not being used for an extended period of time.
 - Refer to local laws and regulation for the disposal of batteries.

Prior to Operation

- Product to be used in ambient temperatures between 60°-95°F (16°-35°C). If the device has recently been introduced to extreme hot or cold temperatures, allow it to rest for 30 minutes before use.
- Do not use this device in an environment with a relative humidity greater than 93%.
- Do not place this product too close to the electromagnetic range, (examples: radio, mobile phone, etc.).
- Do not expose to excessive heat or water.
- Sweat, hair, hats, or other foreign matter on the forehead can affect the accuracy of the measurement.
- Allow up to 5 seconds between measurements.
- Keep the infrared sensor clean to ensure accuracy.
- Do not use if product is damaged.
- Ensure the measurement distance is within 1/2 to 2 inches.
- Contact Global Industrial if there are any problems with the thermometer, do not attempt to do any repairs yourself.
- Do not use on children 3 years of age or younger.

Correct position to measure forehead:



Measure the forehead with a distance between 1/2" to 2".

3

OPERATION

1. Turn the thermometer on by pressing the ON/OFF/MEASURE button. The device will beep and the temperature unit icon (°C or °F) will flash on the LED display screen.
Note: To change from °C to °F, refer to the 'Changing Measurement Unit' section of this manual.
2. Place the sensor point at the forehead, then press the "ON/OFF/MEASURE" button for 1 second and release.
3. The device will beep and display the accurate body temperature.
4. If a consecutive reading is required, wait for the temperature unit icon (°C or °F) to flash before proceeding. Repeat above procedures as many times as needed.
5. Press and hold the "ON/OFF/MEASURE" button for 5 seconds to turn off the thermometer. The device will also turn off automatically if left idle for 60 seconds.

- If temperature reading is below 32°C (89°F), the device will alert by beeping 2 times, and "Lo" will be displayed on the LED screen.
- If temperature reading is above 37.8°C (100°F), the device will alert by beeping 6 times.
- If temperature reading is above 42.2°C (108°F), the device will alert by beeping 2 times, and "Hi" will be displayed on the LED screen.

Recalling Readings from Memory

1. Ensure the thermometer is switched off.
2. Press the "ON/OFF/MEASURE" button for 4 seconds to put the device on memory mode. The last reading will be displayed.
3. Press and release the "ON/OFF/MEASURE" button again to display the next reading in a sequence from the last reading to the first reading.
4. The thermometer has the memory to recall the last 32 readings.
5. The thermometer will automatically turn off if it idles for more than 12 seconds.

Changing Measurement Unit

1. Ensure the thermometer is switched off.
2. Press the "ON/OFF/MEASURE" button for 8 seconds to bring it into temperature mode. The current temperature unit will be displayed.
3. Release and press the "ON/OFF/MEASURE" button again to toggle and select between °C and °F.
4. The thermometer will switch off automatically if it idles for more than 4 seconds and will display the last reading.



4

[Explanation of Marks or Symbols]
The following symbols may appear on the manual, Infrared Thermometer and its accessories.

	MUST OBSERVE Means Obligatory with detailed items expressed in words or figures within or beside the mark. Left one means General Compulsory.
	Refer to instructions manual/booklet.
	IMPLICATION OF SYMBOL Type-BF applied part.
	CE Mark: conforms to essential requirements of the Medical Device Directive 93/42/EEC.
	Caution: Consult accompanying documents.
	Do not dispose of this product as unsorted municipal waste. Collection of such waste separately for special treatment is necessary.
	Transport package shall be kept away from rain.
	Transport package shall not be exposed to sunlight.
	Indicates correct upright position of the transport package.
	Contents of the transport package are fragile therefore it shall be handled with care.
	Indicates temperature limits within which the transport package shall be stored and handled.
	Non-ionizing electromagnetic radiation
	Do not roll
	Lot number
	Production date
	Protected against solid foreign objects of 12.5mm diameter and greater, protected against vertically falling water drops when the device is tilted up to 15°.

5

Warning	
	Do not use the thermometer under temperature extremes (below 16°C/60.8°F or over 35°C/95°F) or humidity extremes (below 15%RH or over 80%RH). *Failing to do so may cause inaccuracy.
	Do not expose the thermometer to temperature extremes (below -20°C/-4°F or over 55°C/131°F) or humidity extremes (below 15%RH or over 93%RH). *Failing to do so may cause inaccuracy.
	Temperature probe has been shocked and lax. *Contact your retailer immediately.
	It is dangerous for patients to perform a self-evaluation and self-treatment based on the measuring results. Be sure to follow doctors' instruction. *A self-evaluation may cause deterioration of diseases.
	Don't touch or blow on infrared sensor. *A polluted or broken infrared sensor may cause inaccuracy.
	If needed, clean the infrared sensor with a soft dry cloth in a gentle manner. *Clean with toilet tissue or paper towel may scratch the infrared sensor, causing inaccuracy.
	Install the battery in the right position according to the manual. * Incorrect replacement will cause battery heat.
	Do not immerse the thermometer in liquids. *This instrument is not waterproof.
	Do not use a mobile phone nearby when the thermometer is working. *Portable and mobile RF communications equipment can affect MEDICAL ELECTRICAL EQUIPMENT. Failing to do so may cause inaccuracy.
	The sensor glass is made from special material which is not easy broken. *If there is any damage, stop using it and contact Global Industrial immediately.
	Do not modify this equipment without authorization of Global Industrial. *If there are any problems, contact Global Industrial.
	The device is not repairable and contains no user serviceable parts. *If there are any problems, contact Global Industrial.
	The device requires no calibration. *If there are any problems, contact Global Industrial.
	No modification of this equipment is allowed. *If there are any problems, contact Global Industrial.
	If this equipment is modified, appropriate inspection and testing must be conducted to ensure continued safe use of the equipment. *If there are any problems, contact Global Industrial.
	The operator shall not touch the thermometer and the patient simultaneously. Keep the machine out of children's reach. *For accidental swallow of battery or protective film, please consult the doctor at once.
	For temperature difference between storage area and measurement site, condition the thermometer for about 30 minutes in room temperature (measurement site). *Failing to do so may cause inaccuracy.
	Ensure that children do not use the instrument unsupervised. *Some parts are small enough to be swallowed.

6

Error Messages

Error Message	Problem	Solution
Hi	Temperature is higher than 42.2°C(108°F).	Operate the thermometer only between the specified temperature ranges. In the event of a repeated error message, contact your retailer or Customer Services
Lo	Temperature is lower than 32°C(89.6°F).	Operate the thermometer only between the specified temperature ranges. In the event of a repeated error message, contact your retailer or Customer Services
Err	Sensor not welded	Contact your retailer or Customer Services
ErE	EEPROM is abnormal	Contact your retailer or Customer Services
	Low power	Replace new batteries
ErH	The temperature of the measuring environment is too high.	Decrease the temperature of the environment, keep it within 16°C-35°C.
ErL	The temperature of the measuring environment is too low.	Increase the temperature of the environment, keep it within 16°C-35°C.

Maintenance, storage and calibration

- Maintenance:**
1. Remove any stains on the body with a soft and dry cloth.
 2. Gently wipe the dirt on the body with a soft cloth, use a cotton swab or soft cloth stained with alcohol, and gently wipe the lens of the temperature measuring head. After using the product, the product can be sterilized with 75% medical alcohol on the soft towel or cotton siver.
- If the probe tip is damaged, please contact the maintenance center.
3. Don't wash with water or detergent containing abrasive or benzene.
 4. Do not immerse in liquids.
- Storage:**
1. The device must not be stored or used at an excessively high or low temperature or humidity, in sunlight, in association with an electrical current or in dusty locations. Otherwise may occur inaccuracies.
 2. Remove the battery if non-use for long time.
- Calibration:**
- This thermometer is calibrated at the time of manufactured. If the thermometer is used according to the instruction, periodic recalibration is not required. If at any time you question the accuracy of the measurement, please contact the retailer immediately.
Don't attempt to modify or reassemble the thermometer.

7

Technical Specifications

Parameter	Specification
Measurement Mode	Forehead mode
Measurement Units	Celsius(°C) and Fahrenheit(°F)
Operating Conditions	16°C-35°C (60.8°F to 95 °F) with a relative humidity of 15%-80%
Storage Conditions	-20°C -+55°C (-4°F to 131 °F) with a relative humidity of 15%-93%
Measurement distance	1/2" to 2"
Forehead temperature measurement range and accuracy	Measurement range: 32.0°C-42.2°C (89.6°F-108°F) Measurement accuracy: ±0.2°C (35.0°C-42.0°C) ±0.4°F(95.0°F-107.6°F); ±0.3°C(±0.5°F) other range.
Memories recall	32 measurements recall
Dimensions	5.4" x 1.5" x 1.5"
Weight	.2 (without batteries)
Battery	2xAAA batteries (DC 3V) - not included
Switch off	Automatically switches off after 1 minute
Product life	5 years
New battery life	1000 times

Guarantee

- 1 year warranty is available from purchasing date, excluding user-caused failures listed below:
- (1) Failure resulted in unauthorized disassemble and modification.
 - (2) Failure resulted in unexpected drop during application or transportation.
 - (3) Failure resulted in operation away from proper instruction in User's Manual.

Included in delivery

- infrared thermometer
Instruction for use



Customer Service:
US: 1-800-645-2986

8

Electromagnetic Compatibility

The ME EQUIPMENT or ME SYSTEM is suitable for home healthcare environments and so on.

Warning : Don't use near active HF surgical equipment and the RF shielded room of an ME system for magnetic resonance imaging, where the intensity of EM disturbances is high.

Warning : Use of this equipment adjacent to or stacked with other equipment should be avoided because it could result in improper operation. If such use is necessary, this equipment and the other equipment should be observed to verify that they are operating normally.

If any : a list of all cables and maximum lengths of cables (if applicable), transducers and other ACCESSORIES that are replaceable by the RESPONSIBLE ORGANIZATION and that are likely to affect compliance of the ME EQUIPMENT or ME SYSTEM with the requirements of Clause 7 (EMISSIONS) and Clause 8 (IMMUNITY). The ACCESSORIES may be specified either generically (e.g. shielded cable, load impedance) or specifically (e.g. by MANUFACTURER and EQUIPMENT OR TYPE REFERENCE).

If any : the performance of the ME EQUIPMENT or ME SYSTEM that was determined to be ESSENTIAL PERFORMANCE and a description of what the OPERATOR can expect if the ESSENTIAL PERFORMANCE is lost or degraded due to EM DISTURBANCES (the defined term "ESSENTIAL PERFORMANCE" need not be used).

1. All necessary instructions for maintaining BASIC SAFETY and ESSENTIAL PERFORMANCE with regard to electromagnetic disturbances for the accepted service life.
2. Guidance and manufacturer's declaration - electromagnetic emissions and Immunity.

Table 1

Guidance and manufacturer's declaration - electromagnetic emission		
Emissions test	Compliance	
RF emissions CISPR 11	Group 1	
RF emissions CISPR11	Class B	
Harmonic emissions IEC 61000-3-2	N/A	
Voltage fluctuations/flicker emissions IEC 61000-3-3	N/A	

Table 2

Guidance and manufacturer's declaration - electromagnetic immunity		
Immunity Test	Compliance level	
Electrostatic discharge (ESD) IEC 61000-4-2	±8 kV contact ±2 kV, ±4 kV, ±8 kV, ±15 kV air	±8 kV contact ±2 kV, ±4 kV, ±8 kV, ±15 kV air
Electrical fast transient/burst IEC 61000-4-4	Power supply lines : ±2 kV input/output lines : ±1 kV	N/A
Surge IEC 61000-4-5	line(s) to line(s) : ±1 kV. line(s) to earth : ±2 kV. 100 kHz repetition frequency	N/A

9

Voltage dips, short interruptions and voltage variations on power supply input lines IEC 61000-4-11	0% 0.5 cycle At 0°, 45°, 90°, 135°, 180°, 225°, 270° and 315° 0% 1 cycle And 70% 25/30 cycles Single phase: at 0% 300 cycle	N/A
Power frequency magnetic field IEC 61000-4-8	30 A/m 50Hz/60Hz	30 A/m 50Hz/60Hz
Conducted RF IEC61000-4-6	150KHz to 80MHz : 3Vrms 6Vrms (in ISM and amateur radio bands) 80% Am at 1kHz	N/A
Radiated RF IEC61000-4-3	10 V/m 80 MHz – 2,7 GHz 80 % AM at 1 kHz	10 V/m 80 MHz – 2,7 GHz 80 % AM at 1 kHz

NOTE U_r is the a.c. mians voltage prior to application of the test level.

Table 3
Guidance and manufacturer's declaration - electromagnetic immunity

Test Frequency (MHz)	Band (MHz)	Service	Modulation	Distance (m)	IMMUNITY TEST LEVEL (V/m)
385	380-390	TETRA 400	Pulse modulation 18Hz	1,8	0.3
450	380-390	GMR5 460, FRS 460, TETRA 800, GSM 800/900, GSM 1900, CDMA 850, LTE Band 5	FM ±5 kHz deviation 1 kHz sine	2	0.3
710	704-787	LTE Band 13, 17	Pulse modulation 217 Hz	0,2	0.3
870	800-960	GSM 1800, GSM 1900, GSM 800, GSM 1900, CDMA 850, LTE Band 5	Pulse modulation 18Hz	2	0.3
930					
1720		GSM 1800, CDMA 1900, DECT, LTE Band 1, 3, 4, 25, UMTS	Pulse modulation 217 Hz	2	0.3
1845	1700-1990				
1970					
2450	2400-2570	Bluetooth, WLAN, 802.11 b/g/n, RF, 2450, LTE Band 7	Pulse modulation 217 Hz	2	0.3
5240	5100-5800	WLAN 802.11 a/n	Pulse modulation 217 Hz	0,2	0.3
5785					

10