

## ENGLISH

## BEFORE USE

- Do not press too hard against the LCD panel because it contains glass.
- Never dispose of the battery in a fire.
- Keep battery out of reach of children.
- Please press  $\boxed{\text{ON}}$  if you see no indication.
- Since this product is not waterproof, do not use it or store it where fluids, for example water, can splash onto it. Raindrops, water spray, juice, coffee, steam, perspiration, etc. will also cause malfunction.
- This product, including accessories, may change due to upgrading without prior notice.

SHARP will not be liable nor responsible for any incidental or consequential economic or property damage caused by misuse and/or malfunctions of this product and its peripherals, unless such liability is acknowledged by law.

## 中文

## 使用之前

- LCD 面板内含玻璃，所以请不要用力挤压 LCD。
- 请绝对不要将电池投入火中。
- 请将电池放置在小孩所能接触范围之外。
- 如果没有任何显示，请按  $\boxed{\text{ON}}$ 。
- 本产品及其附件会因升级而变化，恕不提前通知。
- 因为产品不防水，请不要在液体（如水）能溅到的地方使用或保存。雨滴、喷水、果汁、咖啡、蒸汽、汗水等也会造成产品故障。

夏普对本产品和其外设因误用和（或）故障而导致的附带或间接经济或财产损失不承担义务或责任，除非法律规定有此义务。

## SPECIFICATIONS

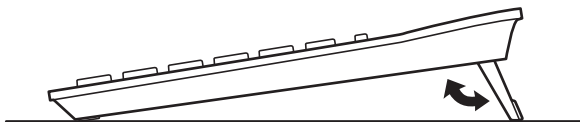
Type:	Electronic calculator
Operating capacity:	12 digits
Power supply:	Built-in solar cell and lithium battery (3V $\dots$ (DC) CR2025 $\times$ 1)
Automatic Power-off:	Approx. 7 min.
Operating temperature:	0°C - 40°C (32°F-104°F)
Dimensions:	110 mm (W) $\times$ 177 mm (D) $\times$ 17.5 mm (H) 4-11/32" (W) $\times$ 6-31/32" (D) $\times$ 11/16" (H)
Weight:	Approx. 150 g (0.33 lb.) (battery included)
Accessories:	Lithium battery (installed), Operation manual

## 规格

类型:	电子计算器
计算能力:	12 位数字
电源:	内置太阳能电池和锂电池 (3V $\dots$ (DC) CR2025 $\times$ 1)
自动关机:	约 7 分钟
工作温度:	0°C - 40°C (32°F-104°F)
尺寸:	110 mm (W) $\times$ 177 mm (D) $\times$ 17.5 mm (H) 4-11/32" (W) $\times$ 6-31/32" (D) $\times$ 11/16" (H)
重量:	约 150 g (0.33 lb.) (包括电池)
附件:	锂电池 (已安装), 操作手册

## KICK STAND

## 支脚



## OPERATIONS

## 操作

- Press  $\boxed{\text{CCE}}$  twice to clear any residual values and calculation instructions in the calculator.
- Upon starting memory calculation, press  $\boxed{\text{CM}}$  to clear the memory. Likewise, preceding grand total calculation, press  $\boxed{\text{GT}}$  twice to clear the grand total memory.
- The position of any switch that is not specifically designated, may be set to any position.
- For expressing calculation examples, only the symbols that are required for explanation are mentioned.
- Example procedures are listed in following manner unless otherwise specified.

(1) Example

(2) Key operations

(3) Display

- 按  $\boxed{\text{CCE}}$  两次清除计算器内任何数值和计算指令。
- 如果开始记忆计算，请按  $\boxed{\text{CM}}$  清除内存。同样，如果要开始总和计算，按  $\boxed{\text{GT}}$  两次清除总和和内存。
- 未特别设计的开关的位置可以设定为任意位置。
- 对于表达式计算示例，只有对需要解释的符号才会说明。
- 示例步骤按如下方式列举，除非另有说明。

(1) 示例

(2) 关键运算

(3) 显示

**GRAND TOTAL (GT)/ANSWER CHECK SWITCH:**

"GT" position: Subtotal (value obtained by pressing [=] or [%]) value will automatically be added in the grand total memory.

"\*" position: Select this position if ordinary calculations are required without the use of grand total memory or answer check.

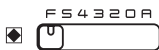
"ANSWER CHECK" position: Stores the previous calculation result, and compares the stored value with the subsequent calculation result.

**总和 (GT)/答案检查开关:**

"GT" 位置: 小计 (按 [=] 或 [%] 所得值) 值将自动添加到总和内存。

"\*" 位置: 如果只是进行普通计算, 而不需要总和和记忆或答案检查, 请选择该位置。

"ANSWER CHECK" 位置: 存储先前的计算结果, 比较存储值和后续计算结果。

**DECIMAL POINT ASSIGNMENT SWITCH:**

"F" position: Set the decimal point to "floating" point.

"5,4,3,2,0" positions: The decimal figures can be set to the respective numbers.

"A" position: Specify the adding mode. For addition and subtraction, the decimal point for entries is positioned automatically for two decimal places. However, this function does not operate if the [.] key is used when entering a value or for calculations other than addition and subtraction.

**小数点指定开关:**

"F" 位置: 小数点设置为“浮动”点。

"5,4,3,2,0" 位置: 小数设置为各个相应数字。

"A" 位置: 指定加法模式。对于加法和减法, 输入数字小数点自动设置为两位小数。如果在输入数值时使用了 [.] 键, 或加法和减法以外计算时, 该功能不可用。

**ROUNDING SELECTOR:**

Specifies the handling of the digit immediately below the position set by the decimal selector. (For example, if the decimal selector is set to 3, then the fourth decimal will be rounded.)

"5/4" position: The answer will be rounded off.

"↓" position: The answer will be rounded down.

\* While the decimal selector is set to "F" (i.e., floating) position, or if the decimal place cannot be determined (preliminary calculation results, for instance), the answer will always be rounded down regardless of the setting above.

**四舍五入选择器:**

指定紧跟小数选择器设定位置后的数字的处理方式。(例如, 如果小数选择器设定为3, 那么第4位小数点就会舍入。)

"5/4" 位置: 结果会被上舍入。

"↓" 位置: 结果会被下舍入。

\* 当小数选择器设置为"F" (即浮点) 位置, 或如果小数位置不能确定 (如初始计算结果), 结果将一直下舍入, 不受上面设置影响。

**ANSWER CHECK (COMPARISON) / 答案检查 (比较)**

- If the answer obtained with [=], [%] agrees with the succeeding tested result, "OK" will be displayed.
- Pressing [CA] will clear the previously calculated result, disabling the comparison.
- Answer Check cannot be performed for calculation results obtained by tax calculations, memory calculations, or sampled values in the middle of a calculation.

- 如果 [=]、[%] 所得结果与随后检测结果一致, 会显示 "OK"。
- 按下 [CA] 将清除先前计算结果, 禁止比较功能。
- 答案检查不能用于税率计算、记忆计算或计算中途取样值的计算结果。



(1) 120×3652+670-258=438652

(2)	(3)	
[CE] [CE] 120 [x] 3652 [+] 670 [-] 258 [=]	0 120 438240 438910 438652	First calculation / 第一次计算
[CE] [CE] 120 [x] 3652 [+] 670 [-]	0 438910	Second calculation / 第二次计算
258 [=]	OK 438652	<ul style="list-style-type: none"> <li>Displayed when it agrees with the previous calculated result. (Not displayed if it disagrees.)</li> <li>当它与先前计算结果一致时显示。(不一致时不显示。)</li> </ul>

## HOW TO PERFORM TAX CALCULATIONS

### 如何执行税率计算

- To perform a tax calculation, first it is absolutely necessary to set and check the tax rate. Prior to making this calculation, make sure that the tax rate is set correctly. (The initial tax rate is 0.)
- A tax rate can be set (or changed) with a number containing up to four digits. (Decimal point is not regarded as a digit.)
- The set tax rate is retained until it is changed. However, the set tax rate may be changed or lost if the battery runs out.
- 要执行税率计算，首先当然需要设置和检查税率。在此类计算之前，请确认税率是否设置正确。（初始税率设置为 0）。
- 税率可以使用最多 4 位数字设置（或更改）。（小数点不作为数字。）
- 设置的税率会一直保留到下次更改。但是，如果电池耗尽，设置税率也会更改或丢失。

(1) • Confirming the tax rate. (0%)

- 确认税率。（0%）

(2)	(3)
CCE CCE RATE RECALL -TRX	RATE TAX 0.

(1) • Set a 5% tax rate. Calculate the tax on \$800 and calculate the total including tax.

- 设置 5% 税率。对 \$800 计算税率，计算连税值。

(2)	(3)
CCE CCE	0.
RATE SET +TRX 5 RATE SET +TRX	= 5.
CCE CCE 800	800.
+TRX	*TAX 840.
+TRX	TAX 40.

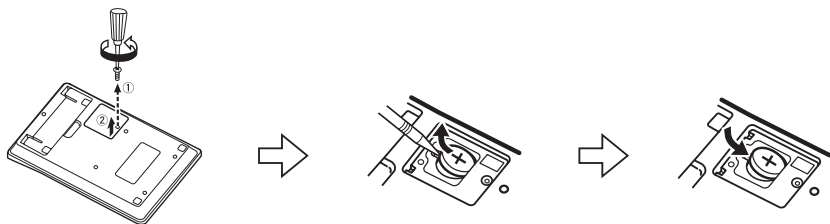
(1) • Perform two calculations using \$840 and \$525, both of which already include tax. (tax rate: 5%)

- Calculate the tax on the total and the total without tax.
- 对 \$84 和 \$52.5 执行计算，两者均已含税。（税率：5%）  
计算税费总额和去税总额。

(2)	(3)
CCE CCE 840 + 525 =	= 1365.
-TRX	-TAX 1300.
-TRX	TAX 65.

## HOW TO PERFORM BASIC CALCULATIONS / 如何执行基本计算

(1)	(2)	(3)
	STY + MEMORY CHECK F5 4 3 2 0 0 R M CCE CCE	0.
$(-24 + 2) \div 4 = -5.5$	- 24 + 2 $\div$ 4 =	-5.5
$13 \times (-4) \div 2 = -26$	13 $\times$ 4 % $\div$ 2 =	-26.
$34 \pm 57 = 91$	34 + 57 =	91.
$45 \pm 57 = 102$	45 =	102.
$38 - 26 = 12$	38 - 26 =	12.
$35 - 26 = 9$	35 =	9.
$68 \times 25 = 1700$	68 $\times$ 25 =	1700.
$68 \times 40 = 2720$	40 =	2720.
$35 \div 14 = 2.5$	35 $\div$ 14 =	2.5
$98 \div 14 = 7$	98 =	7.
$200 \times 10\% = 20$	200 $\times$ 10 % =	20.
$(9 \div 36) \times 100 = 25$	9 $\div$ 36 % =	25.
$200 + (200 \times 10\%) = 220$	200 + 10 % =	220.
$4^6 = (4^3)^2 = 4096$	4 $\times$ = = $\times$ =	4096.
$1/8 = 0.125$	8 $\div$ =	0.125
$25 \times 5 = 125$	CM 25 $\times$ 5 M+	M 125.
$-) 84 \div 3 = 28$	84 $\div$ 3 M-	M 28.
$+) 68 + 17 = 85$	68 + 17 M+	M 85.
182	RM CM	M 182.
$2 + 3 \rightarrow 2 + 4 = 6$	2 + 3 CCE (M-) 4 =	6.
$5 \times 2 \rightarrow 5 \div 2 = 2.5$	5 $\times$ $\div$ 2 =	2.5
$987654320988 \div 0.444$	987654320988 $\div$ 0.444 $\times$	E 2.22444666889
$\times 555 = 1234.56790123 \times 10^{12}$	CCE 555 =	1234.56790123
	(1234.56790123 $\times$ 10 <sup>12</sup> = 1234567901230000)	
$23.5 + 42.3 = 65.8$	STY + MEMORY CHECK F5 4 3 2 0 0 R M % GT GT	0.
$72.4 - 37.321 + 12 = 47.08$	23.5 + 42.3 =	G 65.80
$+) 27 - 19 - 21.61 = -13.61$	72.4 - 37.321 + 12 =	G 47.08
99.27	27 - 19 - 21.61 =	G -13.61
	GT	G 99.27
$1\$45¢$	STY + MEMORY CHECK F5 4 3 2 0 0 R M	
$45\$00¢$	145 +	1.45
$-7\$63¢$	4500 -	46.45
$38\$82¢$	763 =	38.82



**After battery replacement**

- Press **ON** **CCE**, **CR** and make sure the display shows "0." If not, remove the installed battery immediately, reinstall, and recheck the display.
- Press **CCE** **CCE** **RATE RECALL** **-TRX** to confirm the stored tax rate. If this rate is changed or lost, you must configure the rate again. (Refer to "How To Perform Tax Calculations" in this manual.)

**在更换电池后**

- 按 **ON** **CCE**, **CR** 确认显示屏显示 "0"。如果没有, 请立即拆下已装电池, 重新安装, 查看显示屏。
- 按 **CCE** **CCE** **RATE RECALL** **-TRX** 确认已存的税率。如果税率已变或丢失, 您必须重新设置税率。(参见本手册中 "如何执行税率计算"。)

For USA only:

This product contains a CR Coin Lithium Battery which contains Perchlorate Material – special handling may apply, California residents, See [www.dtsc.ca.gov/hazardouswaste/perchlorate/](http://www.dtsc.ca.gov/hazardouswaste/perchlorate/)

**产品中有毒有害物质或元素的名称及含量**

部件名称	有毒有害物质或元素					
	铅 (Pb)	汞 (Hg)	镉 (Cd)	六价铬 (Cr(VI))	多溴联苯 (PBB)	多溴二苯醚 (PBDE)
印刷电路板	○	○	○	○	○	○
显示器	○	○	○	○	○	○
箱体、底盘	○	○	○	○	○	○
电源	○	○	○	○	○	○
键盘	○	○	○	○	○	○
配件(电缆等)	○	○	○	○	○	○

- : 表示该有毒有害物质在该部件所有均质材料中的含量均在SJ/T 11363-2006标准规定的限量要求以下。
- ×: 表示该有毒有害物质至少在该部件的某一均质材料中的含量超出SJ/T 11363-2006标准规定的限量要求。