

HDS-5x

Quick Start Guide



Function keys

HDS works very much like previous Lowrance products but there are some changes that make it even easier to use. Read this guide to quickly familiarize yourself with your new display. For more details on any of the features mentioned here consult the user's manual.



Arrow Keypad Activates cursor on Sonar page. Press up, down, left or right to move the cursor.

ZOUT Zooms out the Sonar page.

ZIN Zooms in the Sonar page.

EXIT Press to return to a previous screen, clear data and close menus.

ENTER Press to save data, change values and accept menu commands.

MENU Accesses the features available on each page.

PAGES Press to bring up the Pages screen, also press and hold to switch control between the panels and combo (split screen) pages.

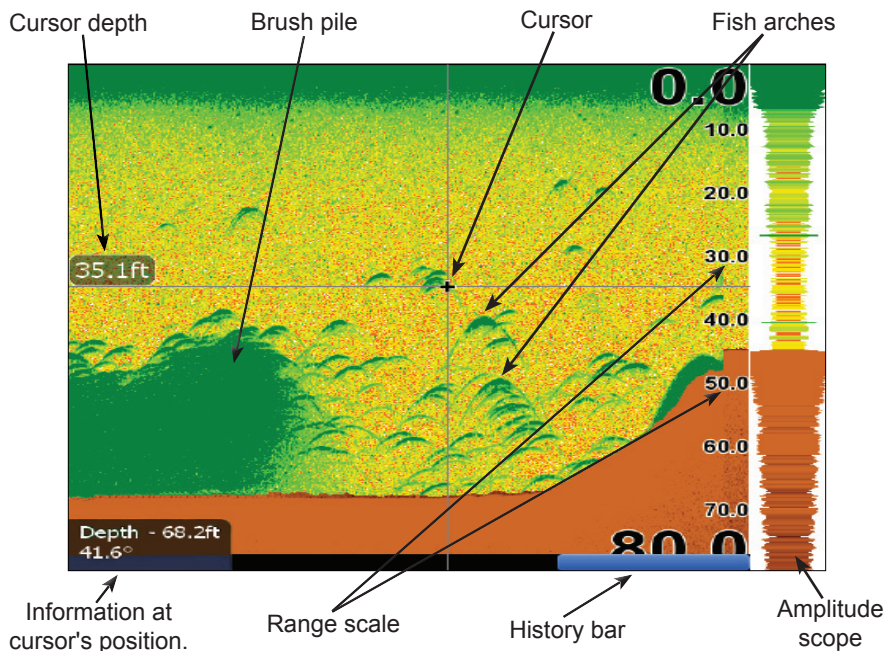
FREQ Selects sonar frequency displayed on Sonar page.

LIGHT POWER Press to turn the unit on, adjust the backlight or place the unit in low power (standby) mode. Press and hold to turn the unit off.



NOTE: The unit is set up for optimal automatic operation under most conditions. For use in thick weeds or very deep water, and a number of other fishing situations, a range of special Fishing Mode settings are available. Consult the user's manual for more details.

Sonar



When the cursor is active on screen use the History bar to scroll the Sonar page back and view previous sonar returns. When the cursor is on screen the sonar does not show real time sonar returns.

To adjust Sensitivity and Colorline:

1. From the Sonar page press the **MENU** key. The Sonar menu will appear. From the Sonar menu select **Adjust**.
2. The Sensitivity adjustment menu will appear. Use the left and right arrows to make adjustments.
3. To adjust Colorline use the up or down arrows to select the Colorline menu. Use the left or right arrows to make adjustments.

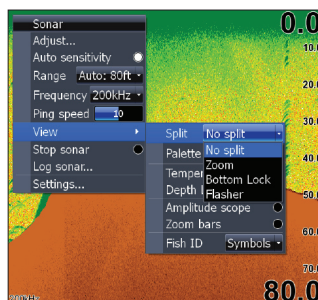
To select a Sonar page Palette:

1. From the Sonar page press the **MENU** key. The Sonar menu will appear. Select **View** in the Sonar menu to open the View submenu.
2. From the View submenu select **Palette**. The Palette menu has 12 sonar screen categories, including Grayscale, Nightview and Iceview.



To select a Zoom, Bottom Lock or Flasher split screen display:

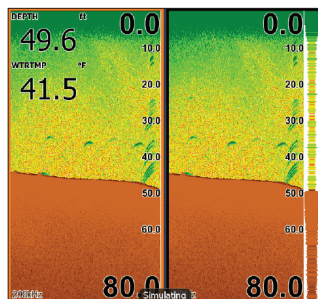
1. From the Sonar page press the **MENU** key. The Sonar menu will appear. Select **View** to open the View submenu.
2. From the View submenu select **Split** to open the Split (screen) menu. The Split screen options are: **No split**, **Zoom**, **Bottom Lock** and **Flasher**.



- **No Split** — displays full sonar screen
- **Zoom** — splits the display with a 2X zoom on the left; a normal sonar view on the right
- **Bottom Lock** — splits the display with a 2X zoom on the left; a normal sonar view on the right. Keeps the bottom on the screen at all times.
- **Flasher** — splits the display with a flasher-style sonar on the left; a normal sonar view on the right

To view and control two Frequencies at once:

1. Press **PAGES** to access the Pages screen. From the Pages screen Sonar options select + **Sonar** combo pages.

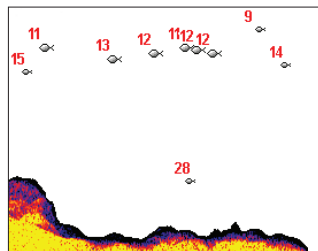


Fish ID

Displays fish echoes as fish symbols instead of fish arches with or without depths.

To select Fish ID symbols and Depths:

1. From the Sonar page press the **MENU** key. The Sonar menu will appear, select **View**. The View submenu will appear.
2. From the View submenu select **Fish ID** to open the Fish ID menu list. From the Fish ID menu list select **Symbols** and press **ENTER** to display fish symbols. To display fish symbol depths select **Depths**. To view both, select **Both**.

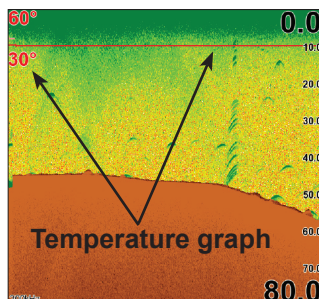


Temperature Graph

Uses a red line graph with digital display at the top of the screen to illustrate changes in Temperature.

To turn Temperature Graph on/off:

1. From the Sonar page press the **MENU** key. The Sonar menu will appear, select *View*. The View submenu will appear.
2. From the View submenu select *Temperature Graph* and press **ENTER** to turn this feature on or off.

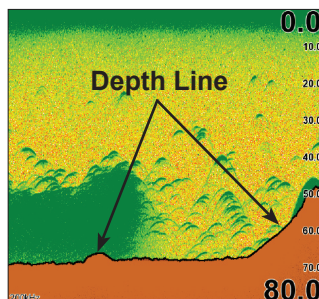


Depth Line

Displays a dark line over the bottom surface, making it easier to distinguish the bottom from fish, trees and other objects.

To turn Temperature Graph on/off:

1. From the Sonar page press the **MENU** key. The Sonar menu will appear, select *View*. The View submenu will appear.
2. From the View submenu select *Depth Line* and press **ENTER** to turn this feature on or off.



Amplitude Scope

Shows sonar returns in real time.

To turn Temperature Graph on/off:

1. From the Sonar page press the **MENU** key. The Sonar menu will appear, select *View*. The View submenu will appear.
2. From the View submenu select *Amplitude Scope* and press **ENTER** to turn this feature on or off.

