

ViewSonic®

NX1932W

LCD TV

- 使用手冊

- 使用手冊

- User Guide



ViewSonic®

Model No. : VS12197-2G

Contents

Important Safety Instructions.....	1
Copyright Information.....	2
Product Registration.....	2
Antenna Installation Instructions	3
Cleaning the LCD TV	3

Getting Started

Package Contents.....	4
Mounting ViewSonic LCD TV to the wall.....	4
Front View of the Product.....	6
Rear View of the product.....	7
Remote Control	8
Installation	10
Basic Operation.....	14


OSD Functions

Picture Menu	16
Sound Menu	17
Setup Menu	17
Channel Menu	18
PC Menu	19

Other Information

Specifications	21
Troubleshooting.....	22
Customer Support	24
Declaration of RoHS Compliance.....	24
Limited Warranty	25

Important Safety Instructions

1. Read these instructions completely before using the equipment.
2. Keep these instructions in a safe place.
3. Heed all warnings.
4. Follow all instructions.
5. Do not use this equipment near water. **Warning:** To reduce the risk of fire or electric shock, do not expose this apparatus to rain or moisture.
6. Clean with a soft, dry cloth. If further cleaning is required, see “Cleaning the LCD TV” in this guide for further instructions.
7. Do not block any ventilation openings. Install the equipment in accordance with the manufacturer’s instructions.
8. Do not install near any heat sources such as radiators, heat registers, stoves, or other devices (including amplifiers) that produce heat.
9. Do not attempt to circumvent the safety provisions of the polarized or grounding-type plug. A polarized plug has two blades with one wider than the other. A grounding type plug has two blades and a third grounding prong. The wide blade and the third prong are provided for your safety. If the plug does not fit into your outlet, consult an electrician for replacement of the outlet.
10. Protect the power cord from being tread upon or pinched, particularly at the plug, and the point where it emerges from the equipment. Be sure that the power outlet is located near the equipment so that it is easily accessible.
11. Only use attachments/accessories specified by the manufacturer.
12.  Use only with a cart, stand, tripod, bracket, or table specified by the manufacturer, or sold with the apparatus. When a cart is used, use caution when moving the cart/apparatus combination to avoid injury from tip-over.
13. Unplug this equipment when it will be unused for long periods of time.
14. Refer all servicing to qualified service personnel. Service is required when the unit has been damaged in any way, such as: if the power-supply cord or plug is damaged, if liquid is spilled onto or objects fall into the unit, if the unit is exposed to rain or moisture, or if the unit does not operate normally or has been dropped.
15. This product is only to perform the useful function of entertainment and visual display tasks are excluded.

Copyright Information

Copyright © ViewSonic® Corporation, 2008. All rights reserved.

ViewSonic, the three birds logo, OnView, ViewMatch, and ViewMeter are registered trademarks of ViewSonic Corporation.

Disclaimer: ViewSonic Corporation shall not be liable for technical or editorial errors or omissions contained herein; nor for incidental or consequential damages resulting from furnishing this material, or the performance or use of this product.

In the interest of continuing product improvement, ViewSonic Corporation reserves the right to change product specifications without notice. Information in this document may change without notice.

No part of this document may be copied, reproduced, or transmitted by any means, for any purpose without prior written permission from ViewSonic Corporation.

Product Registration

To meet your future needs, and to receive any additional product information as it becomes available, please register your product on the Internet at: www.viewsonic.com.

For Your Records

Product Name: NX1932W
ViewSonic LCD TV
Model Number: VS12197-2G
Document Number:
Serial Number:
Purchase Date:



Product disposal at end of product life

ViewSonic is concerned about the preservation of our environment. Please dispose of this product properly at the end of its useful life. Your local waste disposal company may provide information about proper disposal.

The lamp in this product contains mercury. Please dispose of properly in accordance with environmental laws of your location.

Antenna Installation Instructions

1. Outdoor Antenna Grounding

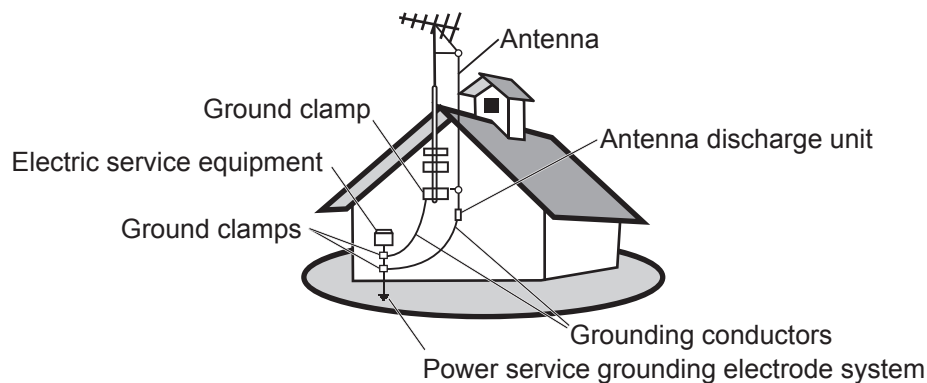
If an outside antenna or cable system is connected to the product be sure the antenna or cable system is grounded so as to provide some protection against voltage surges and built-up static charges, Article 810 of the National Electrical Code, ANSI/NFPA 70, provides information with regard to proper grounding of the mast and supporting structure, grounding of the lead-in wire to an antenna discharge unit, connection to grounding electrodes, and requirements for the grounding electrode.

2. Lightning

For added protection for this product during a lightning storm, or when it is left unattended and unused for long periods of time, unplug it from the wall outlet and disconnect the antenna or cable system. This will prevent damage to the product due to lightning and power-line surges. Do not disconnect the antenna or the power cord during a heavy storm lightning may strike while you are holding the cable cord, causing serious injury; turn off your LCD TV and wait for the weather to improve.

3. Power Lines

An outside antenna system should not be located in the vicinity of overhead power lines or other electric light or power circuits, or where it can fall into such power lines or circuits, When installing an outside antenna system, extreme care should be taken to keep from touching such power lines or circuits as contact with them might be fatal.



Cleaning the LCD TV

- Make sure the LCD TV is turned off.
- Never spray or pour any liquid directly onto the screen or case.

To clean the screen:

1. Wipe the screen with a clean, soft, lint-free cloth. This removes dust and other particles.
2. If still not clean, apply a small amount of non-ammonia, non-alcohol based glass cleaner onto a clean, soft, lint-free cloth, and wipe the screen.

To clean the case:

1. Use a soft, dry cloth.
2. If still not clean, apply a small amount of a non-ammonia, non-alcohol based, mild non-abrasive detergent onto a clean, soft, lint-free cloth, then wipe the surface.

Disclaimer

ViewSonic® does not recommend the use of any ammonia or alcohol-based cleaners on the LCD TV screen or case. Some chemical cleaners have been reported to damage the screen and/or case of the LCD TV. ViewSonic will not be liable for damage resulting from use of any ammonia or alcohol-based cleaners.

Getting Started

Congratulations on your purchase of a ViewSonic® LCD TV.

Important! Save the original box and all packing material for future shipping needs.

Package Contents

Your LCD TV package includes:

- LCD TV
- Power Cord
- VGA Cable
- Warranty Card*
- Remote Control with batteries
- ViewSonic User Guide

* **Note:** For Hong Kong area, there is no warranty card.

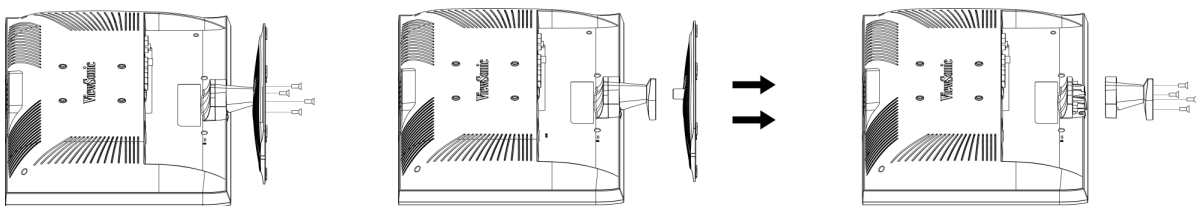
Mounting ViewSonic LCD TV to the wall

The LCD TV can be used in a free standing position or wall-mounted. Before installing the product to the wall, please consider the following guidelines:

- Read the Important Safety Instructions, at the start of this manual.
- Do not install in a moist or wet environment. This equipment is intended for indoor use.
- Do not install near heat source, or strong magnetic fields.
- Use only ViewSonic approved wall-mounting brackets to support the LCD TV weight.
- Before attaching the wall mount plate to the back cover, ensure the product is working.
- If your LCD TV is already set up for free-standing operation, you need to first remove the stand before mounting the device to the wall.

To attach the wall-mount bracket to LCD TV safely, please use the following guidelines:

- Disconnect the power and any other cables that might hinder moving the LCD TV.
- Set the LCD TV on a table or work surface, placing the screen face down on a towel or woolen blanket to protect the screen surface from damage while installing plate.
- Please refer the following steps to remove the stand.
 1. Remove the base. It is attached to the stand with 4 screws.
 2. Remove the 4 screws holding the stand to the hinge.
 3. Remove the stand.

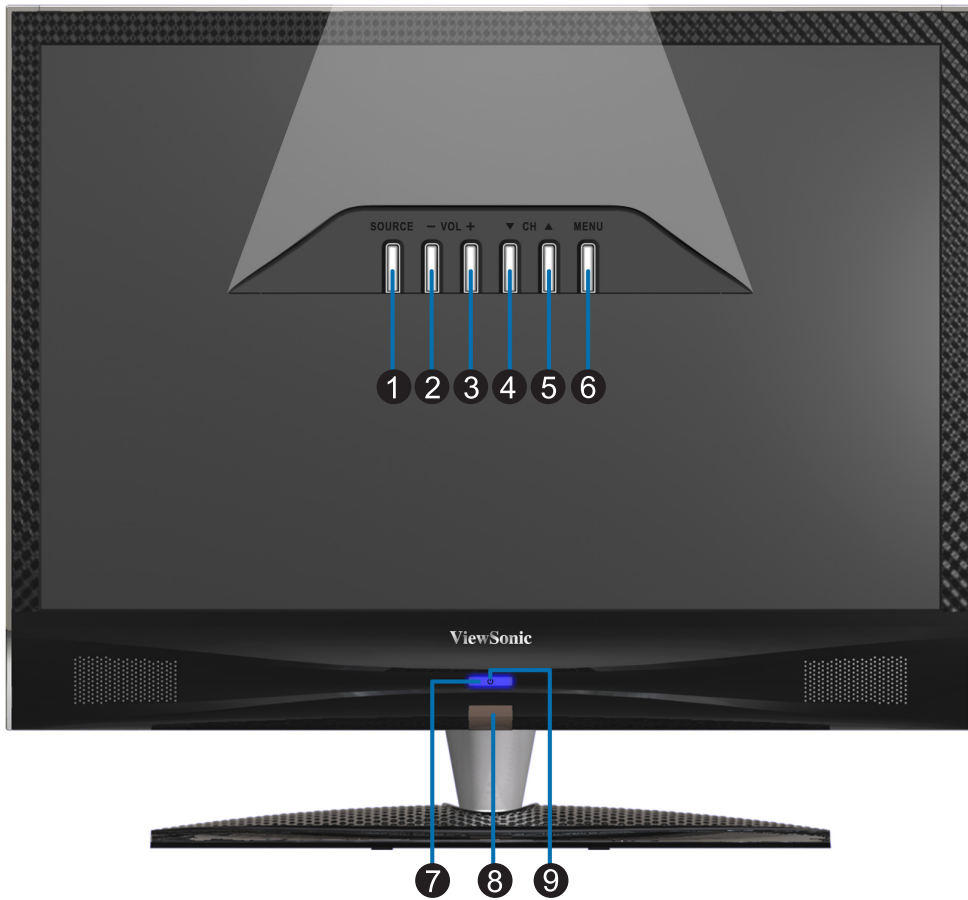


- Install the wall mount plate to the LCD TV using screws NO LONGER than 10mm, as longer screws found in universal (non-ViewSonic) wall mount kits may damage the power supply causing the unit to fail. The wall-mount screw type is M4 x L10.



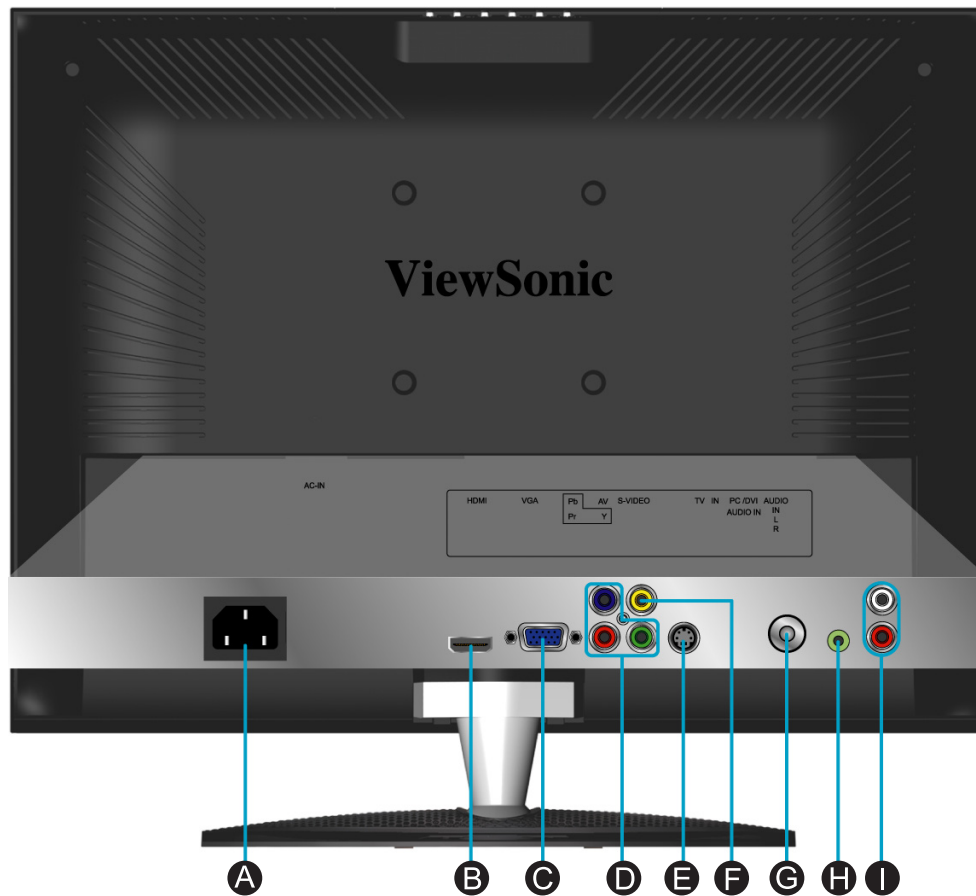
- Mount the wall mount bracket to the wall ensuring use of proper screws to support the installation. Ensure there is at least 3cm of space surrounding any air-vents of your LCD TV to allow adequate cooling during operation.
- Hang the LCD TV wall mount plate to the wall mount bracket, completing installation. Enjoy your ViewSonic LCD TV!

Front View of the Product



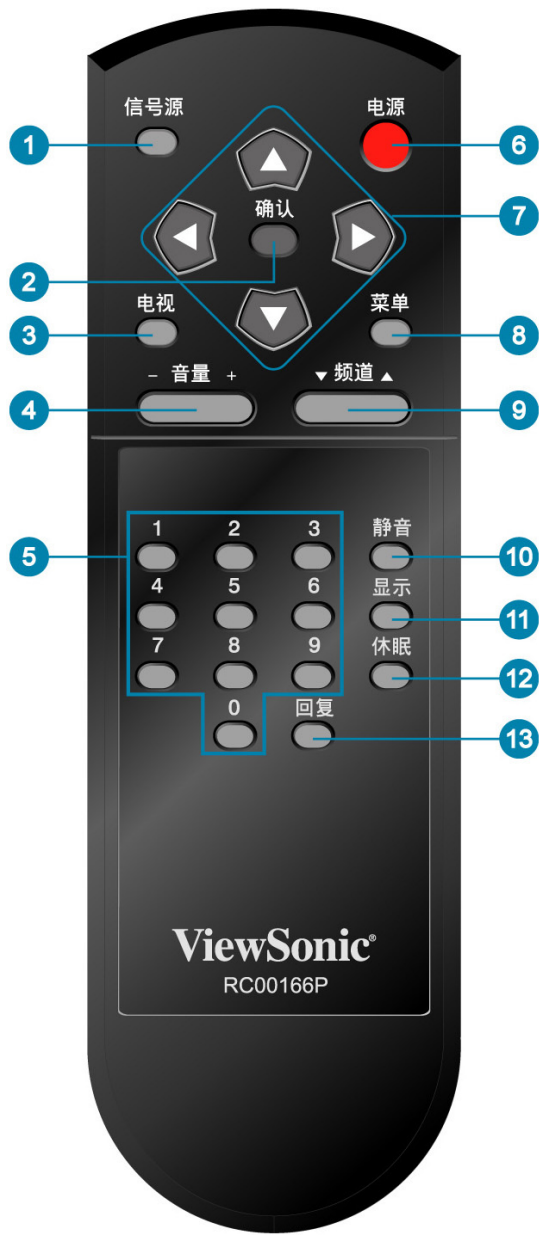
- ① **SOURCE**
Select input source.
- ② **Volume Down**
Decrease sound volume or adjust a highlighted control while in OSD menu.
- ③ **Volume Up**
Increase sound volume or adjust a highlighted control while in OSD menu.
- ④ **CH Down**
Channel down when source is at TV or select a control while in OSD menu.
- ⑤ **CH Up**
Channel up when source is at TV or select a control while in OSD menu.
- ⑥ **Menu**
Turn OSD menu ON/OFF.
- ⑦ **Power ON/OFF button**
Turn the power on from standby mode or turn the power off to return to the standby mode.
- ⑧ **Remote Control Receiver**
Receives IR signals from the remote control.
- ⑨ **Power LED Indicator**
Lights up in blue when the TV is turned on. Lights up in amber when the TV is in standby mode.

Rear View of the Product

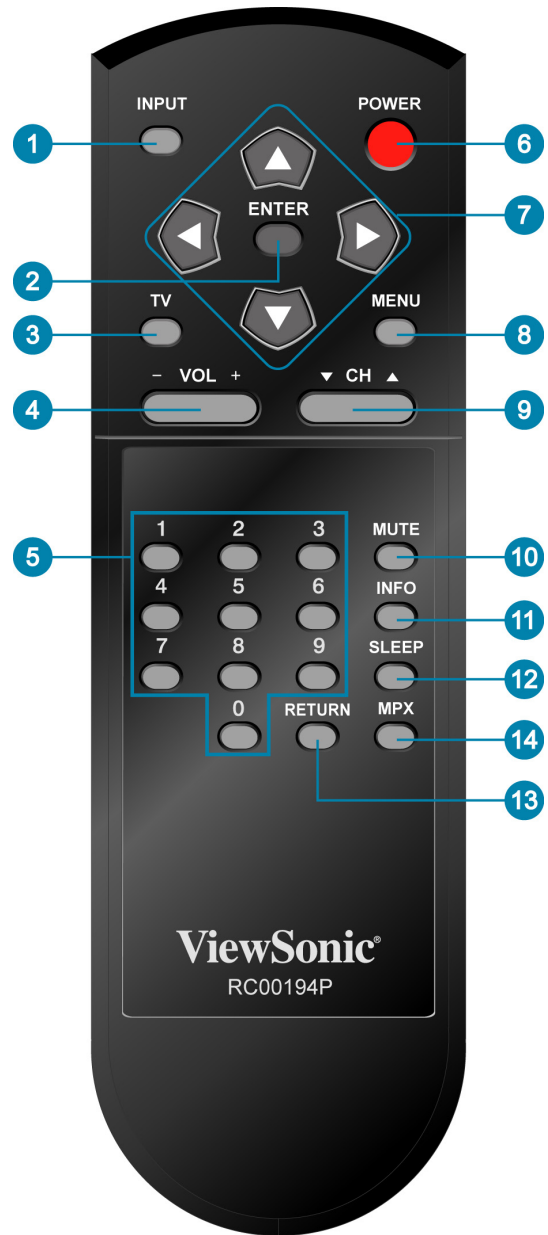


- A Power (AC input)**
Connect to LCD TV and AC outlet with the power cord.
- B HDMI Input Terminal**
Connect this port to the HDMI output of A/V device.
- C VGA (15 pin) Signal Input**
Connect this port to the VGA output of your PC.
- D YPbPr / HD Component Video Input**
Connect the external video devices with component output to these jacks.
- E S-Video input**
Connect other devices, such as DVD or VCD to this port.
- F Composite Video input**
Connect other devices, such as DVD or VCD to this port.
- G RF Antenna / Cable TV Input**
Connect to the antenna or cable service.
- H PC Audio input**
Connect this port to PC audio output jack.
- I AV/S-Video/YPbPr Audio Input (left/ right)**
Connect the Audio in cable for AV/S-Video/YPbPr from this jack to the corresponding connectors on your A/V devices.

Remote Control



(For China area)



(For Hong Kong area)

ENGLISH

Remote control button function as follow

1	INPUT	Select input source
2	ENTER	Enter the function setting
3	TV	Swap between TV. Swap to TV when in other source
4	VOL+ and VOL-	Adjust volume up or down
5	0~9 number button	Switch channel number keys
6	POWER	Power ON/OFF
7	UP/ DOWN /LEFT/ RIGHT	UP/ DOWN/ LEFT/ RIGHT: Select or adjust the function of OSD
8	MENU	On Screen Display (OSD) menu ON/OFF
9	PROGRAM UP/ DOWN	Select up or down programs
10	MUTE	Volume mute ON/OFF
11	INFO	Display current information
12	SLEEP	TV Sleep timer setup
13	RETURN	Return to previous channel
14	MPX	Switch the sound mode in NICAM-Stereo or NICAM-Dual. (only available for Hong Kong area)

Installation

1. Insert Remote Control Batteries



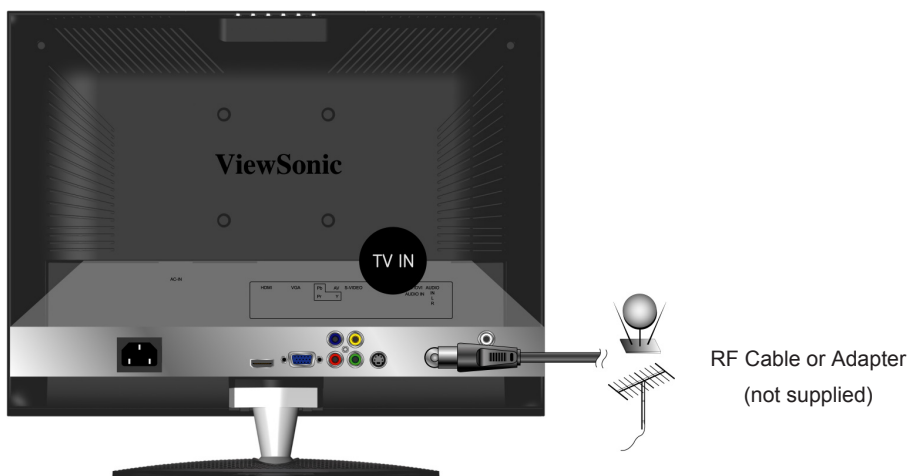
- 1 Remove the battery cover by pulling then lifting the knob on the cover.
- 2 Insert the batteries, corresponding to the (+) and (-) markings on the battery compartment.
- 3 Reattach the battery cover.

CAUTION

- Only use the specified AA batteries.
- Do not mix new and old batteries. This may result in cracking or leakage, which may pose a risk of fire or lead to personal injury.
- Insert batteries according to (+) and (-) markings. Inserting the batteries incorrectly may result in cracking or leakage, which may pose a risk of fire or lead to personal injury.
- Dispose of the battery in accordance with local laws and regulations.
- Keep the battery away from children and pets.
- When the remote control will not to be used for an extended period, remove the batteries.

2. Connecting RF antenna or Cable TV Wire

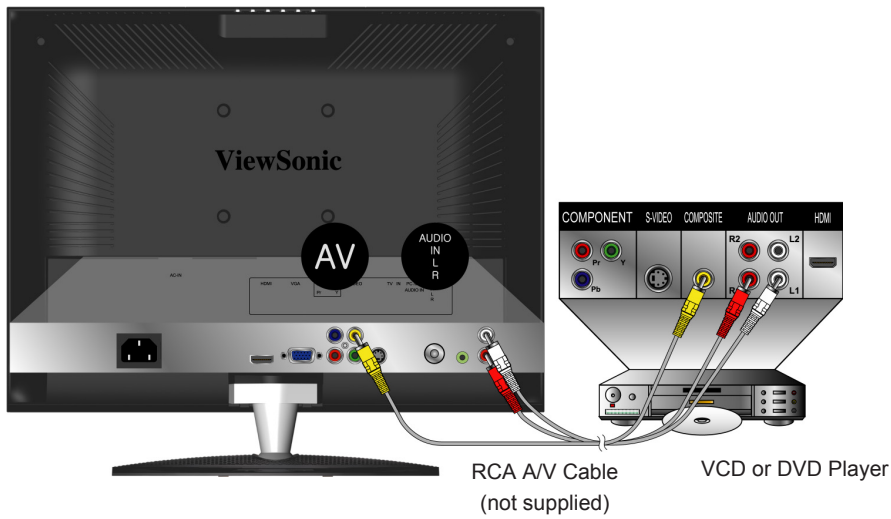
Make sure the power is OFF before installing your LCD TV. Connect the LCD TV to TV antenna or set-top-box with 75-ohm coaxial cable. Preset the TV channels into memory with **Auto Scan** function when using an antenna or cable TV system without a cable connector box (See page 18).



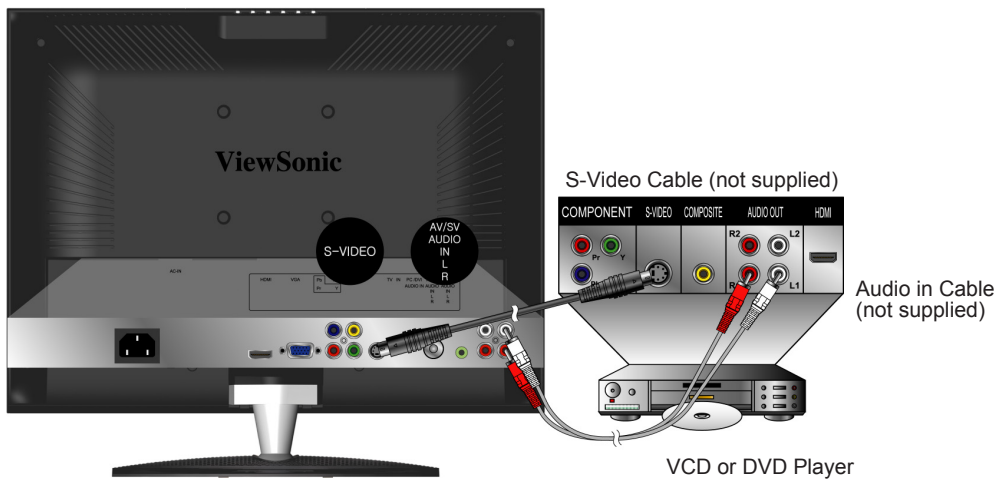
3. Connecting to DVD / Set Top Box

Connect Video / Audio cables from compatible devices into the back panel of your LCD TV.

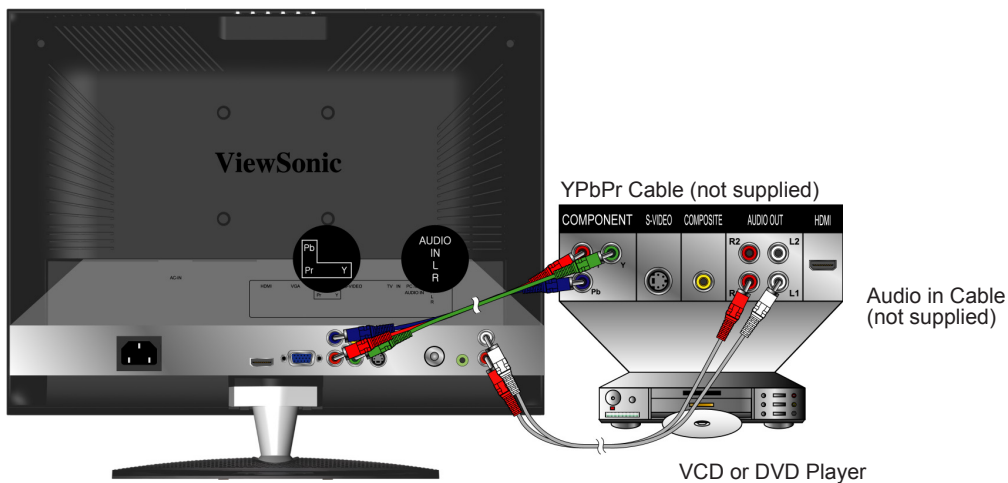
1) With AV cable:



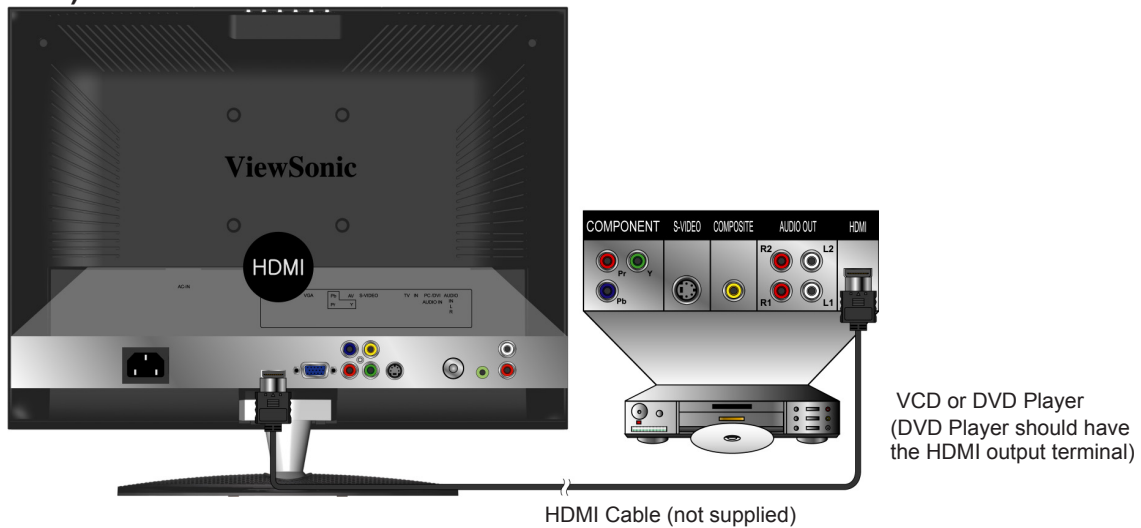
2) With S-Video cable:



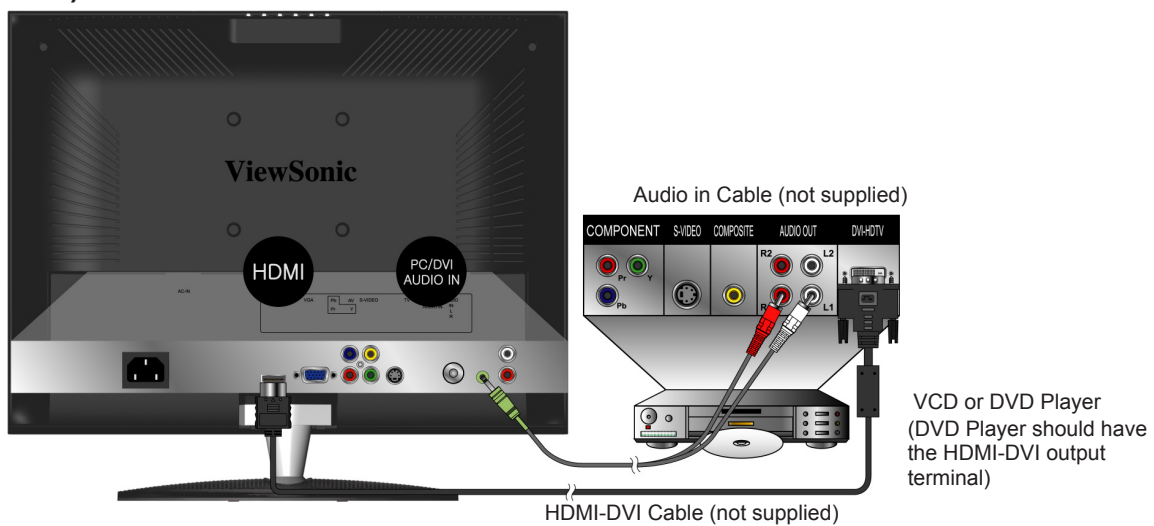
3) With YPbPr cable:



4) With HDMI cable:



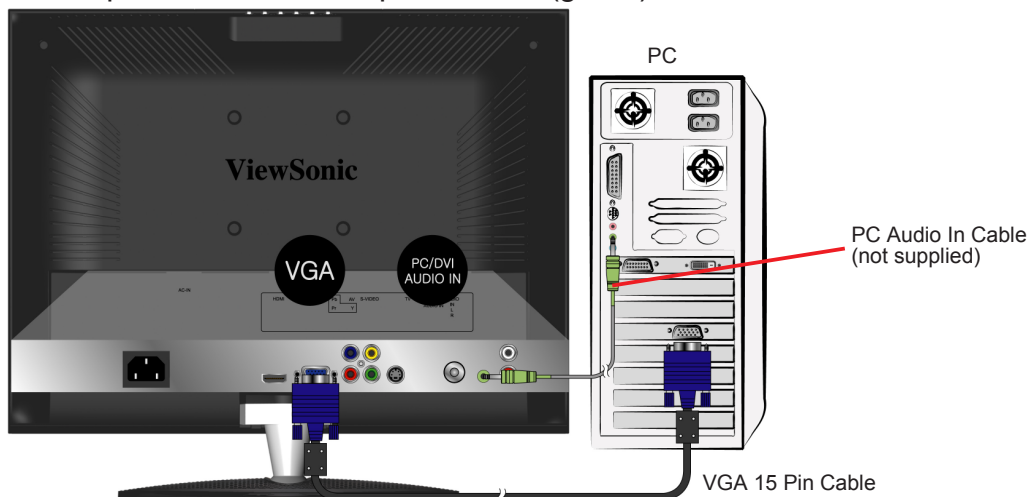
5) With HDMI-DVI cable:



4. Connecting to a computer

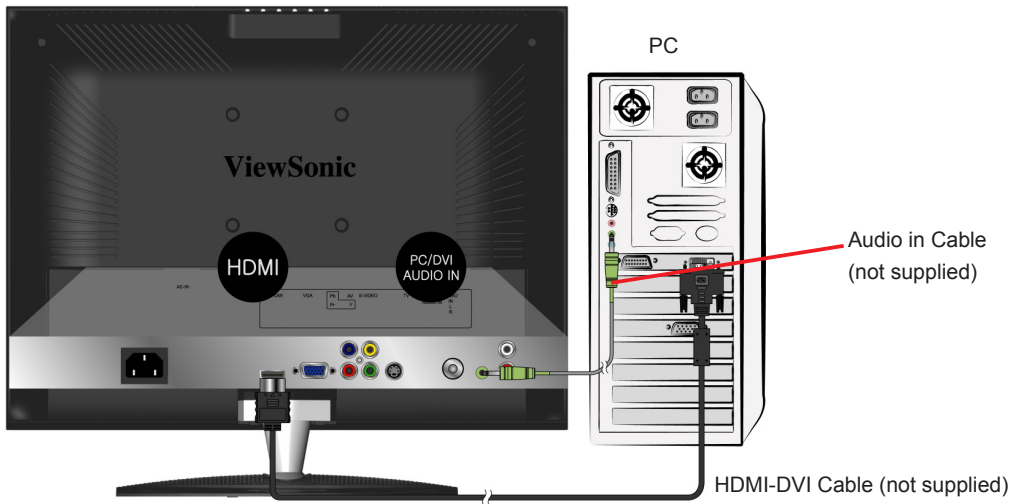
1) With VGA cable:

Connect the VGA cable from VGA output of the computer to the VGA terminal input of your LCD TV. Also, connect the Audio In cable (green) from the audio output of your computer to the audio input terminal (green) of the LCD TV.



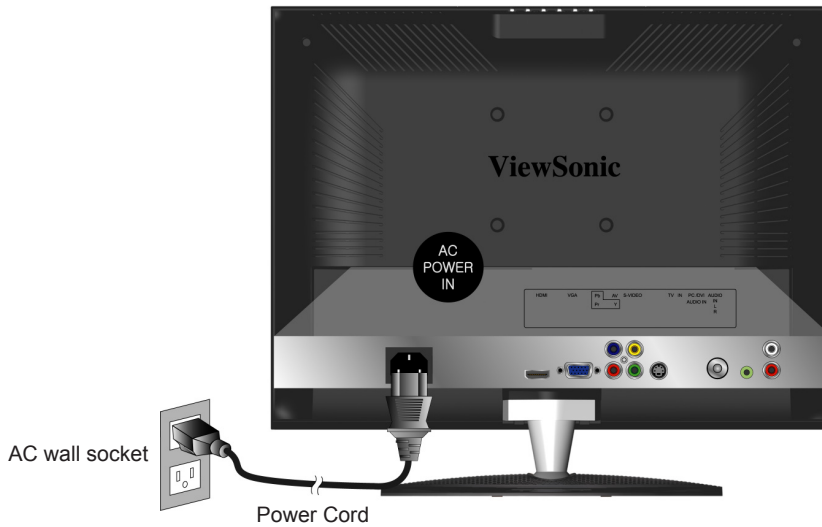
2) With HDMI-DVI cable:

Connect the HDMI-DVI cable from the DVI output of the computer to the HDMI terminal input of the LCD TV. Also, connect the Audio In cable (green) from the audio output of your computer to the audio input terminal (green) of the LCD TV.



5. Connecting with the power cord

Connect the power cord to the AC inlet at the back of your LCD TV, after all connections have been completed, and plug the other end of the power cord into a correctly grounded electrical outlet.



Basic Operation

To operate your LCD TV, you may use the TV remote control or buttons located at top of the LCD TV to select input source, change channels, or adjust volume.

Turning on the LCD TV

Before using the LCD TV:

1. Connect external equipment properly.
2. Insert the power plug.

Power On/Off

To turn the LCD TV on/off :

Press the **POWER** button at the bottom of the LCD TV or press **POWER** button on your remote control to turn on/off the TV. The power LED indicator lights blue when the LCD TV is on.

Note: when there is no signal in the PC mode, the power LED indicator lights amber after a few seconds' idleness.

Select input source

Press the **INPUT** button on the remote control ,then press **▼** or **▲** to select the required input source between PC, HDMI,TV,AV, S-Video, and YPbPr.

Volume Adjusting

Press **VOL +/-** to adjust volume.

To silence volume, press **MUTE**.

If you want to restore volume, press **MUTE** again, or press **VOL +/-** directly.

Channel Select

Press number keys, **CH▲▼** buttons to select the desired channels.

Ex: the desired channel is 8, press **8** only.

Ex: the desired channel is 80, Press **8**, then press **0**.

Return to previous channel, press **RETURN** key.

Sleep Time Setting

Repeatedly press **SLEEP** button to set the off timer. The function is used to automatically shut off the LCD TV after a preset period of time passed.

There are several times for choice -- 15min., 30min., 45min., and 60min..

To cancel Sleep Time function, choose 0 min..

INFO

To display the current information of the LCD TV, press **INFO**, and the current state will be displayed on the screen.

Switch Sound Mode

Repeatedly press **MPX** button on remote control to Switch the sound mode in NICAM-Stereo or NICAM-Dual. (only available for Hong Kong area)

Using OSD Menu

You are able to use OSD menus to adjust various settings by using your remote control or menu buttons on the front panel of the LCD TV.

The basic operation is as following:

- ◆ Press **MENU** to display OSD menu.
- ◆ Press ◀▶ to cycle through the menus.
- ◆ Press **ENTER** or ▲▼ to enter the menu you select.
- ◆ Use ▲▼ to appoint your desired optional item.
- ◆ Press ◀▶ to adjust the settings.
- ◆ Press **MENU** to finish adjustment and press **MENU** again to exit the OSD menu.

OSD Functions

ADVANCED OPERATION—OSD MENU

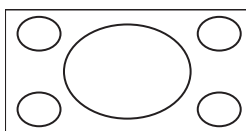
Picture Menu — To adjust the picture quality

When input source is TV:

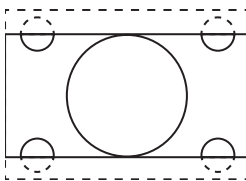
When input source is AV, S-Video, YPbPr, HDMI:



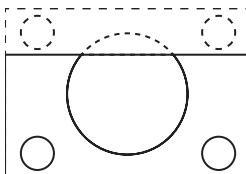
- **Contrast:** To adjust contrast of video.
- **Brightness:** To adjust luminance of video.
- **Colour:** To adjust colour.
- **Tint:** To adjust tint level.
- **Sharpness:** To adjust picture sharpness.
- **Colour Temp.:** To select the screen colour temperature between Normal, Warm, and Cool.
- **Aspect Ratio:** Press ◀▶ to select image size between Full, Zoom1, Zoom2, Normal, and Panorama.



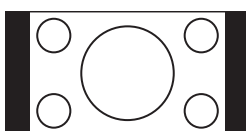
Full: Suitable for stretching 4:3 programs to fill the screen.(Default)



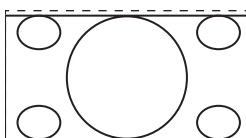
Zoom1 : This mode is useful for 1.78:1 DVDs program, it can to minimize letterbox effect, although some letterboxing is still required for movies shot at the 1.85:1 or 2.35:1 ratio. When viewing 1.85:1 or 2.35:1 DVDs movie scale mode will still show more wide black bands at the top and bottom of the screen.



Zoom2 : The scaling size is the same with Zoom1, but the image will be shift upwards. This mode is useful for letterbox DVDs to see the subtitle.



Normal: Suitable for viewing conventional 4:3 programs in their normal format. There are black bars on the left and right sides of the screen.



Panorama : A nonlinear stretch mode for panorama. The conventional 4:3 image will stretch to fill the screen, but only the extreme edges will be distorted; anything toward the center of the screen will be displayed close to its proper proportions.

Sound Menu — To adjust audio quality and status

When input source is TV:



When input source is AV, S-Video, YPbPr, HDMI or PC:



- **Bass:** To adjust the bass.
- **Treble:** To adjust the treble.
- **Balance:** To adjust left and right audio balance.
- **AVC:** To select automatic volume control circuitry (AVC) ON or OFF. (only available in TV mode)

Setup Menu — To set up OSD window

When input source is TV:



When input source is AV, S-Video, YPbPr, HDMI or PC:



- **Sleep:** Press ◀▶ to set the off timer. There are several times to choose: 15 min, 30 min, 45 min, 60 min, or OFF.
- **OSD Language:** To select the language of OSD from Simply Chinese, English, Traditional Chinese,.
- **OSD H-Position:** To adjust the horizontal position of OSD.
- **OSD V-Position:** To adjust the vertical position of OSD.
- **OSD Timeout:** To automatically shut off the OSD after a preset period of time passed. Use ◀▶ to preset the time from 15 to 60 seconds. To keep the OSD on, select OFF.
- **Memory Recall:** Press ▶ to restore the default settings.

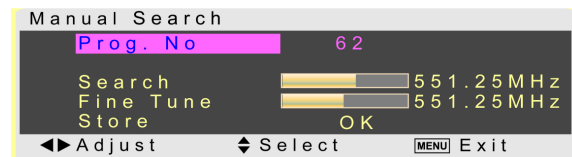
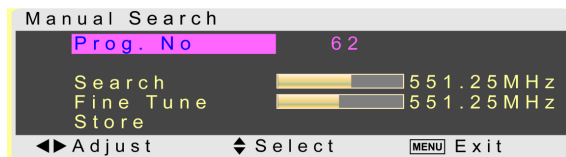
Channel Menu — To setup for TV

It is only active in TV source.



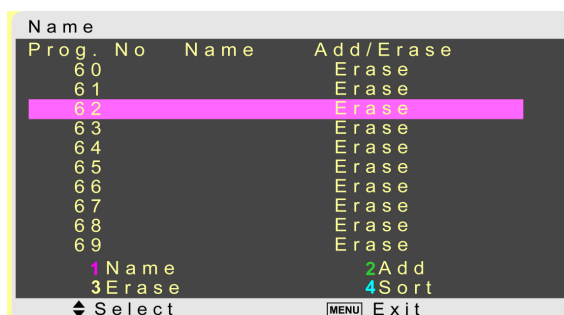
- **Auto Scan:** To automatically preset the channels into TV's memory. Kindly suggest you auto scan all the channels before watching your TV for the first time.
Note: After auto scan all the channels, you need not to do it again when turning on your TV next time.
***China TV system:** PAL D/K/I.

- **Manual Search:** The function is to give a minute search for possible existing channels and store them in memory.



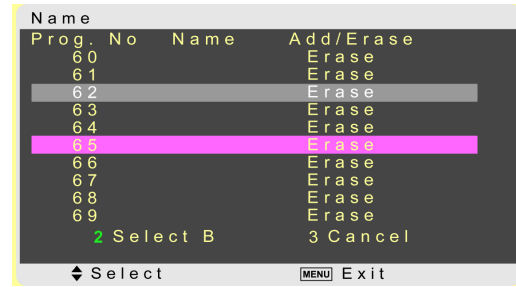
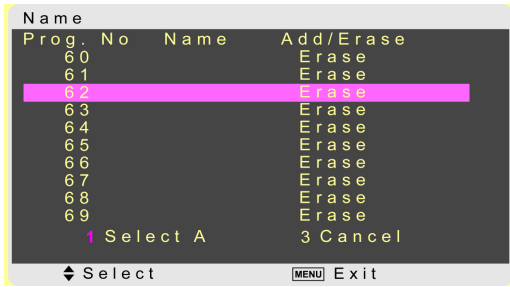
1. Press **▶** to get into "Manual Search".
2. Move the cursor to "Prog. No", and select the desired channel position with **◀▶**.
3. Move your cursor to "Search", and search the detectable channels with **◀▶**.
4. Move your cursor to "Fine Tune", and adjust the picture with **◀▶**.
5. Move to Store, then store the instruction with **ENTER**. The information "OK" will be shown.
Note: The channel will be stored instead of the former program.

- **Name:** Advance settings of the programs. Press **▶** to get into "Name".



1. To enter a name: Press "1" (on the remote control) to edit a name for the channel. Use **▲▼** to select the desired letter(0~9 , A~Z and Space) and use **◀▶** to move the cursor to enter next letter. After the desired name is entered, press "1" to confirm.
2. To Erase/ Add channels: Use **▲▼** to select the desired channel. Press "3" to erase the channel or press "2" to add it. When using **▲CH▼** key, the channels you erased will be passed over. You may press "2" to add the erased channels or use Auto Scan function to re-present them.

3. To exchange one channel with another: Press “4” to enter the function of “Sort,” and the following screen will show.



If you want to exchange channel 1 with channel 2:

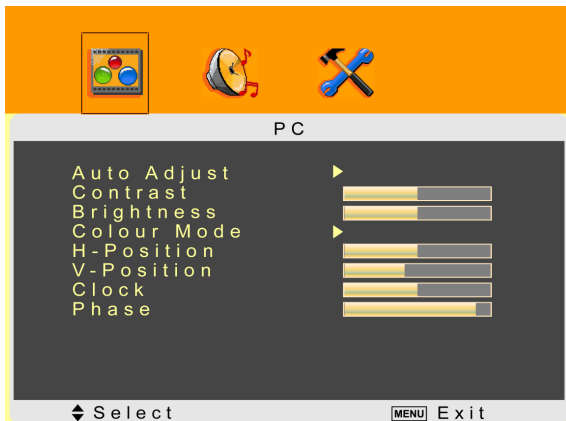
1. Move your cursor to channel 1 and press “1” (Select A) to select channel 1.
2. Move your cursor to channel 2 and press “2” (Select B) to select channel 2.
3. Confirm your selection by pressing “4” .
4. Press “MENU” to exit.

PC Menu — To adjust for PC

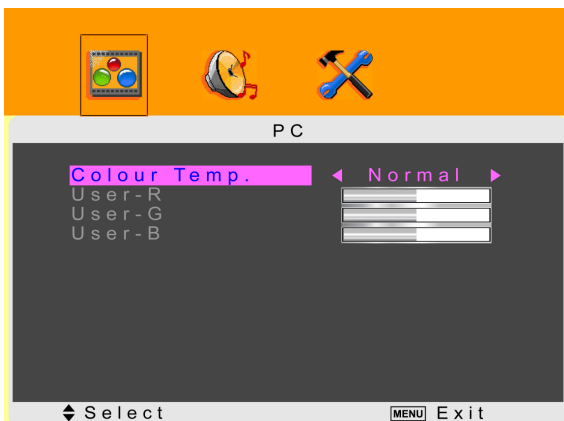
It is only active in PC and HDMI (support PC mode).

When input source is PC:

When input source is HDMI(PC mode):



- **Auto Adjust:** To process auto image adjustment by pressing ▶ .
- **Contrast:** To adjust foreground luminance of video.
- **Brightness:** To adjust background luminance of video.
- **Colour Mode:** To adjust the colour temperature.



1. Press ◀ or ▶ to get into Colour Mode.
 2. Use ◀▶ to select between Normal, Warm, Cool, and User.
 3. When select "User", it allows you separately adjust the colour of red, green, and blue.
- **H-Position:** To adjust horizontal position of video.
 - **V-Position:** To adjust vertical position of video.
 - **Clock:** To adjust delay time of clock in order to reduce the noise of picture.
 - **Phase:** To adjust delay time of phase in order to reduce the noise of picture.
- Note:** When input source is HDMI(PC), the Auto Adjust, H-Position, V-Position, Clock and Phase is not available.

Other Information

Specifications

LCD	Type	19.0" TFT Active Matrix RGB 0.285 (H) x 0.285 (V) mm pixel
	Color Filter	RGB vertical stripe
	Glass surface	Anti-Glare
Input signal	RGB	RGB analog (0.7/1.0 Vp-p, 75 ohms) Separate Sync, f _h : 30-80 kHz, f _v :50-75 Hz
	TV system	PAL D/K/I, SECAM D/K
	Video	1 composite RCA, 1 S-Video, 1 HDMI, 1 YPbPr component
	Audio	1 mini-stereo, 1 pair of RCA (L/R) stereo
Compatibility	PC	Up to 1440 x 900 Non-interlaced
Video signal timings	CVBS, S-Video	SD: 480i, 576i
	HDMI, YPbPr	SD: 480i, 480p, 576i, 576p HD: 720p, 1080i
Speaker Output		2W x 2
Power	Voltage	100-240 VAC, 50/60 Hz (auto switch)
Display area	Full Scan	410.4 mm (H) x 256.5 mm (V)
		16.16" (H) x 10.10" (V)
Operating conditions	Temperature	32°F to + 104°F (0°C to + 40°C)
	Humidity	20% to 70% (no condensation)
	Altitude	To 10,000 feet (3,000m)
Storage condition	Temperature	-4°F to + 140°F (-20°C to + 60°C)
	Humidity	20% to 90% (no condensation)
	Altitude	To 40,000 feet (12,000m)
Dimensions	Physical	447.4mm (W) x 397.0mm (H) x 156.0mm (D)
		17.6" (W) x 15.6" (H) x 6.1" (D)
Weight	Net	5.0 kg (11.0 lb)
Regulations		CCC
Power consumption	On	< 50 W (blue LED)
	Stand by	< 2 W (amber LED)

Preset Timing Mode (Pre-adjusted to GTF® 1440 x 900 @ 60 Hz)

Warning: Do not set the graphics card in your computer to exceed these refresh rates; doing so may result in permanent damage to the LCD TV.

Note: Product Specifications are subject to change without notice.

Troubleshooting	
Problem	Possible Solution
No power	<ul style="list-style-type: none"> • Make sure the power cord is properly connected to the LCD TV AC power socket. • Make sure the AC power cord is properly connected to the wall outlet. • Make sure the DC power button is ON (Blue LED). • Plug another electrical device (like a radio) to the power outlet to verify that the outlet is supplying the proper voltage.
No picture	<ul style="list-style-type: none"> • The TV station may be experiencing problems. Try another channel. • The Cable TV signal may be scrambled or encoded. Please contact your local cable operator. • Make sure that connection to other components are correct referring to the user guide. • Make sure that setup has been done correctly after connections. • Make sure the correct input is selected and the input signal is compatible.
Strange color, light color, or color misalignment	<ul style="list-style-type: none"> • Ensure that the video cable is securely connected. • The picture may appear dim in a brightly lit room. • Adjust brightness, contrast, saturation (color), and tint referring to the user guide. • Check the input signal setting.
No sound	<ul style="list-style-type: none"> • Check your audio connections are properly connected referring to the user guide. • The MUTE button may have been pressed, try pressing this button again. • Check your audio settings, your TV audio may be set to minimum. • Press the Volume + (Up) button on the remote control.
Remote control unit does not operate	<ul style="list-style-type: none"> • Make sure the directions of batteries are inserted correctly referring to the user guide. • Batteries could be weak or dead. Replace by new batteries. • Is a fluorescent light illuminated near the remote control sensor? • The path of the remote control beam may be blocked. Make sure the path is clear and that the remote control is aimed at the remote control sensor on the TV. • Press the POWER button on the remote control to see if you can turn on the TV. • Press MENU button on the remote control to see if there is a MENU shown on the screen. • Press only one button at a time and it is the correct one for the operation you want to perform.

Unit cannot be operated	<ul style="list-style-type: none"> • External influences such as lightning or static electricity may cause improper operation. In this case, operate the unit after first turning on the power of the LCD TV and the AVC System, or unplug the AC cord for 1 to 2 minutes, then replug again.
Power is cut off suddenly	<ul style="list-style-type: none"> • Is the sleep timer set in advance? • Is there no signal in PC mode or HDMI mode? • The internal temperature of the unit has increased. Remove any objects blocking the vent or clean as necessary.
No CATV reception	<ul style="list-style-type: none"> • CATV is connected improperly or not connected; please check all the CATV connections. • The cable TV service is interrupted; please contact your cable operator.
Picture is cut off/with sidebar screen	<ul style="list-style-type: none"> • Is the image positioned correctly? • Are screen mode adjustments such as picture size set correctly? • Press WIDE button repeatedly on the remote control to see if you can get the picture you prefer.

Customer Support

For technical support or product service, see the table below or contact your reseller.

Note: You will need the product serial number.

Country/ Region	Web Site	Telephone	Email
China	www.viewsonic.com.cn	800 820 3870	service.cn@cn.viewsonic.com
Hong Kong	www.hk.viewsonic.com	+852-310-22-900	service.cn@cn.viewsonic.com

Declaration of RoHS Compliance

The toxic and hazardous substances or elements of this product are shown as below:

Name of Components	Hazardous substances or elements					
	Lead (Pb)	Mercury (Hg)	Cadmium (Cd)	Hexavalent Chromium (Cr ⁶⁺)	Polybrominated biphenyls (PBB)	Polybrominated diphenyl ethers (PBDE)
Outer Casing	○	○	○	○	○	○
Circuit Board*	×	○	×	○	○	○
Power Cord / Adaptor	×	○	×	○	○	○
External Signal Cable	×	○	○	○	○	○
LCD Panel	×	×	×	○	○	○
Remote Control (battery included)	×	○	×	○	○	○

- * : The circuit board components include printed circuit board and other parts, such as resistors, capacitors, IC, and connectors, etc.
- : To indicate the amount of toxic and hazardous substance in all homogenous materials of the component does not exceed what indicated in “The Limitation Standard of Toxic and Hazardous Substances in Electronic Information Product”.
- × : To indicate the amount of toxic and hazardous substance has exceeded what indicated in “The Limitation Standard of Toxic and Hazardous Substances in Electronic Information Product” in at least one of the homogenous materials of the component. However, the component still conforms to the EU RoHS directive (2002/95/EC), and is exempted from it.

Limited Warranty

VIEWSONIC® LCD TV

What the warranty covers:

ViewSonic warrants its products to be free from defects in material and workmanship, under normal use, during the warranty period. If a product proves to be defective in material or workmanship during the warranty period, ViewSonic will at its sole option repair or replace the product with a like product. Replacement product or parts may include remanufactured or refurbished parts or components.

How long the warranty is effective:

ViewSonic LCD TV are warranted for one (1) year for all parts excluding the light source and one (1) year for labor from the date of the first customer purchase.

Who the warranty protects:

This warranty is valid only for the first consumer purchaser.

What the warranty does not cover:

1. Any product on which the serial number has been defaced, modified or removed.
2. Damage, deterioration or malfunction resulting from:
 - a. Accident, misuse, neglect, fire, water, lightning, or other acts of nature, unauthorized product modification, or failure to follow instructions supplied with the product.
 - b. Repair or attempted repair by anyone not authorized by ViewSonic.
 - c. Any damage of the product due to shipment.
 - d. Removal or installation of the product.
 - e. Causes external to the product, such as electric power fluctuations or failure.
 - f. Use of supplies or parts not meeting ViewSonic's specifications.
 - g. Normal wear and tear.
 - h. Any other cause which does not relate to a product defect.
3. Any product exhibiting a condition commonly known as "image burn-in" which results when a static image is displayed on the product for an extended period of time.
4. Removal, installation, and set-up service charges.
5. When you mount it on the wall, the following must be noticed:
 - a. The accessories attached with this product are applicable for this product only.
 - b. When the product is mounted on the wall, holes and fixed screws will remain in the wall body.
 - c. Wall face may discolor when this product has been mounted on the wall for a long time.

How to get service:

1. For information about receiving service under warranty, contact ViewSonic Customer Support. You will need to provide your product's serial number.
2. To obtain warranted service, you will be required to provide (a) the original dated sales slip, (b) your name, (c) your address, (d) a description of the problem, and (e) the serial number of the product.
3. Take or ship the product freight prepaid in the original container to an authorized ViewSonic service center or ViewSonic.
4. For additional information or the name of the nearest ViewSonic service center, contact ViewSonic.

Limitation of implied warranties:

There are no warranties, express or implied, which extend beyond the description contained herein including the implied warranty of merchantability and fitness for a particular purpose.

Exclusion of damages:

ViewSonic's liability is limited to the cost of repair or replacement of the product. ViewSonic shall not be liable for:

1. Damage to other property caused by any defects in the product, damages based upon inconvenience, loss of use of the product, loss of time, loss of profits, loss of business opportunity, loss of goodwill, interference with business relationships, or other commercial loss, even if advised of the possibility of such damages.
2. Any other damages, whether incidental, consequential or otherwise.
3. Any claim against the customer by any other party.

Effect of state law:

This warranty gives you specific legal rights, and you may also have other rights which vary from state to state. Some states do not allow limitations on implied warranties and/or do not allow the exclusion of incidental or consequential damages, so the above limitations and exclusions may not apply to you.

Sales outside the U.S.A. and Canada:

For warranty information and service on ViewSonic products sold outside of the U.S.A. and Canada, contact ViewSonic or your local ViewSonic dealer.

The warranty period for this product in mainland China (Hong Kong, Macao and Taiwan Excluded) is subject to the terms and conditions of the Maintenance Guarantee Card.

For users in Europe and Russia, full details of warranty provided can be found in www.viewsoniceurope.com under Support/Warranty Information.



ViewSonic®