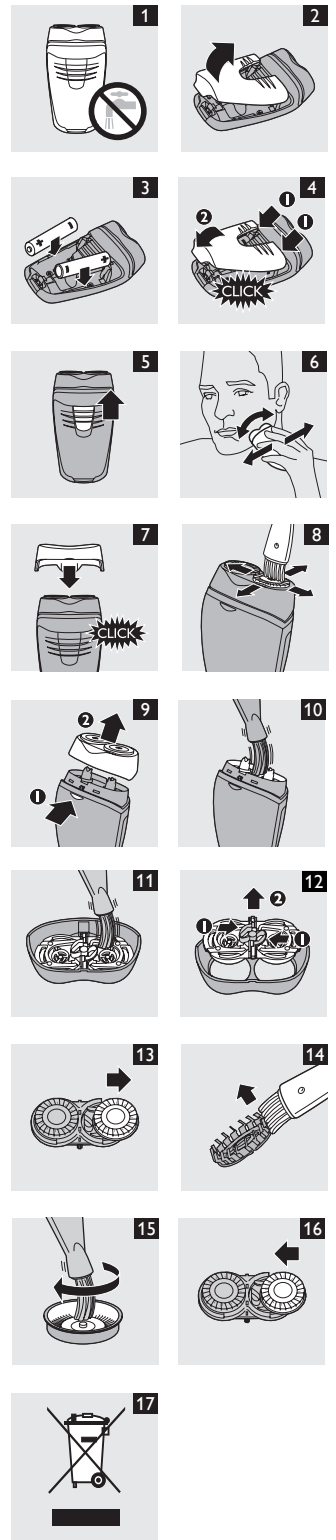


HQ136
HQ132
HQ130



PHILIPS



Introduction

Congratulations on your purchase and welcome to Philips! To fully benefit from the support that Philips offers, register your product at www.philips.com/welcome.

Important

Read this user manual carefully before you use the appliance and save it for future reference.

Warning

- This appliance is not intended for use by persons (including children) with reduced physical, sensory or mental capabilities, or lack of experience and knowledge, unless they have been given supervision or instruction concerning use of the appliance by a person responsible for their safety.
- Children should be supervised to ensure that they do not play with the appliance.

Caution

- Keep the appliance dry (Fig. 1).
- Use and store the appliance at a temperature between 15°C and 35°C.
- Remove the batteries from the appliance if you are not going to use it for a month or more.

Compliance with standards

This Philips appliance complies with all standards regarding electromagnetic fields (EMF). If handled properly and according to the instructions in this user manual, the appliance is safe to use based on scientific evidence available today.

Preparing for use

Inserting batteries

The appliance runs on two R6 AA 1.5-volt batteries. Preferably use Philips alkaline batteries.

Make sure that your hands are dry when you insert the batteries.

- 1 Remove the lid of the battery compartment (Fig. 2)
- 2 Place two batteries in the battery compartment (Fig. 3).

Note: Make sure the + and - indications on the batteries match the indications in the battery compartment.

Note: The shaver does not work if the batteries have been placed incorrectly.

- 3 Put the lid of the battery compartment back onto the appliance. First insert the top part of the lid (1) and then press down the bottom part (2) until you hear a click (Fig. 4).

How to avoid damage due to battery leakage

- Do not expose the appliance to temperatures higher than 35°C.
- Remove the batteries if you are not going to use the appliance for a month or more.
- Do not leave empty batteries in the appliance.

Shaving time

Two new batteries offer a shaving time of 60 minutes.

Using the appliance

Shaving

Your skin may need 2 or 3 weeks to get accustomed to the Philips shaving system. Shaving on a dry face gives the best results.

- 1 Push the on/off slide upwards to switch on the shaver (Fig. 5).
- 2 Move the shaving heads over your skin. Make both straight and circular movements (Fig. 6).
- 3 Push the on/off slide downwards to switch off the shaver.
- 4 Put the protection cap on the shaver after use to prevent damage to the shaving heads (Fig. 7).

Cleaning and maintenance

Never use scouring pads, abrasive cleaning agents or aggressive liquids such as petrol or acetone to clean the appliance.

Regular cleaning guarantees better shaving performance.

For easy and optimal cleaning, Philips Shaving Head Cleaning Spray (type no. HQ110) is available. Ask your Philips dealer for information.

Note: Philips Shaving Head Cleaning Spray may not be available in all countries. Contact the Consumer Care Centre in your country about the availability in your country.

You can also clean the shaver in the following way:

Every week: shaving unit and hair chamber

- 1 Switch off the shaver.
- 2 Clean the top of the appliance with the cleaning brush (Fig. 8).
- 3 Press the release button (1) and remove the shaving unit (2) (Fig. 9).
- 4 Clean the inside of the hair chamber with the cleaning brush (Fig. 10).
- 5 Clean the inside of the shaving unit with the cleaning brush (Fig. 11).

- 6 Put the shaving unit back onto the shaver.

Every two months: shaving heads

- 1 Switch off the shaver.
- 2 Press the release button (1) and remove the shaving unit (2) (Fig. 9).
- 3 To remove the retaining frame, push the sides of the central spring towards each other (1). Then lift the retaining frame out of the shaving unit (2) (Fig. 12).
- 4 Slide the shaving heads out of the retaining frame (Fig. 13).

Do not mix up the cutters and the guards.

This is essential since each cutter has been ground with its corresponding guard for optimal performance. If you accidentally mix up the sets, it

could take several weeks before optimal shaving performance is restored.

- 5 Clean the cutter with the short-bristled side of the cleaning brush (Fig. 14).

Brush carefully in the direction of the arrow.

- 6 Clean the guard with the cleaning brush (Fig. 15).
- 7 Slide the shaving heads back into the retaining frame and put the retaining frame back into the shaving unit (Fig. 16).
- 8 Put the shaving unit back onto the shaver.

Extra thorough cleaning

For extra thorough cleaning, put the shaving heads in a degreasing liquid (e.g. alcohol) every six months. To remove the shaving heads, follow steps 1 to 4 described above. After cleaning, lubricate the central point on the inside of the guards with a drop of sewing machine oil to prevent wear of the shaving heads.

Replacement

Replace the shaving heads every 2 years or if they are damaged or worn. Replace them with HQ4 + Philips shaving heads only.

- 1 Switch off the shaver.
- 2 Press the release button (1) and remove the shaving unit (2) (Fig. 9).
- 3 To remove the retaining frame, push the sides of the central spring towards each other (1). Then lift the retaining frame out of the shaving unit (2) (Fig. 12).
- 4 Slide the shaving heads out of the retaining frame and replace them with new ones (Fig. 13).
- 5 Put the retaining frame back into the shaving unit.
- 6 Put the shaving unit back onto the shaver.

Accessories

The following accessories are available:

- HQ4 + Philips shaving heads.
- HQ110 Philips Shaving Head Cleaning Spray (not available in China).

Environment

- Batteries contain substances that may pollute the environment. Do not throw away empty batteries with the normal household waste, but dispose of them at an official collection point for batteries. Always remove the batteries before you discard and hand in the appliance at an official collection point.
- Do not throw away the appliance with the normal household waste at the end of its life, but hand it in at an official collection point for recycling. By doing this, you help to preserve the environment (Fig. 17).

Guarantee & service

If you need service or information or if you have a problem, please visit the Philips website at www.philips.com or contact the Philips Consumer Care Centre in your country (you find its phone number

in the worldwide guarantee leaflet). If there is no Consumer Care Centre in your country, go to your local Philips dealer.

Guarantee restrictions

The shaving heads (cutters and guards) are not covered by the terms of the international guarantee because they are subject to wear.

Troubleshooting

This chapter summarises the most common problems you could encounter with the appliance. If you are unable to solve the problem with the information below, contact the Consumer Care Centre in your country.

Problem	Possible cause	Solution
Reduced shaving performance.	The shaving heads are dirty.	Clean the shaver thoroughly. See chapter 'Cleaning and maintenance'.
	Long hairs obstruct the shaving heads.	Clean the cutters and guards with the cleaning brush supplied. See chapter 'Cleaning and maintenance'.
	The shaving heads are damaged or worn.	Replace the shaving heads. See chapter 'Replacement'.
The shaver does not work when I push the on/off slide upwards.	The batteries are empty.	Replace the batteries. See chapter 'Preparing for use'.
	The batteries have been placed incorrectly.	Make sure the + and - indications on the batteries match the indications in the battery compartment (see chapter 'Preparing for use').
Skin irritation.	Your skin needs time to get used to the Philips shaving system.	Skin irritation during the first 2-3 weeks of use is normal. After this period, the skin irritation usually disappears.

产品简介

感谢您的惠顾，欢迎光临飞利浦！为了您能充分享受飞利浦提供的支持服务，请登陆 www.philips.com/welcome 网站注册您的产品。

注意事项

使用产品之前，请仔细阅读本用户手册，并妥善保管以供日后参考。

警告

- 本产品不打算由肢体不健全、感觉或精神上有障碍或缺乏相关经验和知识的人（包括儿童）使用，除非有负责他们安全的人对他们使用本产品进行监督或指导。

- 应照看好儿童，确保他们不玩耍该产品。

注意

- 保持产品干燥。(图 1)
- 必须在 15 摄氏度至 35 摄氏度之间的温度下使用和存放本产品。
- 如果超过一个月不使用本产品，请从产品中取出电池。

符合标准

这款飞利浦产品符合关于电磁场 (EMF) 的相关标准。据目前的科学证明，如果正确使用并按照本用户手册中的说明进行操作，本产品是安全的。

使用准备

插入电池

产品使用两节 R6 AA 1.5 伏电池。最好使用飞利浦碱性电池。

装入电池之前，双手要保持干燥。

- 1 取下电池仓盖 (图 2)
- 2 将两节电池放入电池仓。(图 3)

注意：确保电池的正负极指示与电池仓内的正负指示一致。

注意：如果电池装错，则剃须刀就不会工作。

- 3 将电池仓盖装回到产品。首先插入仓盖的顶部 (1)，然后按下底部 (2)，直到听到“咔嚓”一声。(图 4)

如何避免因电池泄漏而引起的损坏

- 切勿将产品暴露在温度高于 35°C 的环境中。
- 如果一个月或一个月以上不使用本产品，则将电池取出。
- 切勿将耗尽的电池留在产品中。

剃须时间

两节新电池可供 60 分钟剃须。

使用本产品

剃须

您的皮肤可能需要 2 到 3 周才能适应飞利浦剃须系统。

在干爽的面部剃须效果最佳。

- 1 向上推动开/关按钮以接通剃须刀电源。(图 5)
- 2 将剃须刀头在皮肤上移动。作直线和迂回动作。(图 6)
- 3 向下推动开/关按钮以关闭剃须刀电源。
- 4 使用之后用保护盖盖好剃须刀，以防剃须刀头受损。(图 7)

清洁和保养

不要使用钢丝绒、研磨性清洁剂或腐蚀性液体（例如汽油或丙酮）来清洁产品。

为保证更好的剃须效果，剃须刀必须定期清洗。

为了更方便有效地清洁剃须刀，特推出飞利浦剃须刀头清洁喷雾剂（型号 HQ110）。有关信息，请咨询飞利浦家庭小电器客户服务部。

注意：飞利浦剃须刀头清洁喷雾剂并非所有国家/地区都有销售。请向当地的客户服务中心了解是否有售。

您也可以下列方式清洁剃须刀：

每周：剃须刀头部件和胡茬储藏室

- 1 关闭剃须刀。
- 2 用清洁刷清洁产品顶部。(图 8)
- 3 按下释放钮 (1)，取下剃须刀头部件 (2)。(图 9)
- 4 用清洁刷清洁胡茬储藏室的内侧。(图 10)
- 5 用清洁刷清洁剃须刀头部件的内侧。(图 11)
- 6 将剃须刀头部件重新安装到剃须刀上。

每两个月：清洁剃须刀头

- 1 关闭剃须刀。
- 2 按下释放钮 (1)，取下剃须刀头部件 (2)。(图 9)
- 3 要取下固定架，请捏拢中央弹簧的两侧 (1)。然后向上提起固定架，将其从剃须刀头部件中取出 (2)。(图 12)
- 4 将剃须刀头滑离固定架。(图 13)

不要将刀片和网罩混合在一起。

这一点很重要，因为每组刀片和网罩都已相互磨合得很好，可获得最佳剃须效果。如果不小心将它们弄混，剃须刀将需要数周时间才能恢复到最佳剃须性能。

5 用清洁刷的短毛一侧清洁刀片。(图 14) 按箭头方向仔细刷净。

6 用清洁刷清洁网罩。(图 15)

7 滑动剃须刀头，将其重新安装到固定架上，然后将固定架重新安装到剃须刀头部件上。(图 16)

8 将剃须刀头部件重新安装到剃须刀上。

极其彻底的清洁

如需彻底清洁，则应每隔六个月将剃须刀头浸入脱脂液（如酒精）清洗。按照上述步骤 1 至 4 取下剃须刀头。清洗完成后，向网罩内的中心点滴入一滴缝纫机油，以防剃须刀头磨损。

更换

剃须刀头应每 2 年更换一次，损坏或磨损时也应加以更换。只能用 HQ4 + 飞利浦剃须刀头进行更换。

- 1 关闭剃须刀。
- 2 按下释放钮 (1)，取下剃须刀头部件 (2)。(图 9)
- 3 要取下固定架，请捏拢中央弹簧的两侧 (1)。然后向上提起固定架，将其从剃须刀头部件中取出 (2)。(图 12)
- 4 将剃须刀头从固定架上滑出，用新的剃须刀头更换。(图 13)
- 5 将固定架重新安装到剃须刀头部件上。
- 6 将剃须刀头部件重新安装到剃须刀上。

附件

可选配以下附件：

- HQ4+ 飞利浦剃须刀头。
- HQ110 飞利浦剃须刀头清洁喷雾剂（不在中国出售）

环境

- 电池含有可能会污染环境的物质。不要将耗尽的电池与一般的生活垃圾一同弃置，而应将其交给官方回收站。丢弃产品时，一定要将电池取出，或将其送到官方指定的回收站。
- 弃置产品时，请不要将其与一般生活垃圾堆放在一起；应将其交给官方指定的回收中心。这样做有利于环保。(图 17)

保修与服务

如果您需要服务或信息，或者有任何疑问，请访问飞利浦网站：www.philips.com。您也可与您所在地的飞利浦顾客服务中心联系（可从全球保修卡中找到其电话号码）。如果您的所在地没有飞利浦顾客服务中心，则可以与当地的飞利浦经销商联系。

保修限制

由于剃须刀头（刀片和网罩）属于易磨损物品，因此不在国际保修条款的涵盖范围之列。

故障种类和处理方法

本章归纳了使用本产品时最可能遇到的问题。如果您无法根据下面的信息解决问题，请与贵国（地区）的飞利浦客户服务中心联系。

问题	可能的原因	解决方法
剃须性能下降。	剃须刀头很脏。	彻底清洁剃须刀。见“清洁和保养”一章。
	过长的胡须堵塞了剃须刀头。	用随附的清洁刷清洁刀片和网罩。见“清洁和保养”一章。
	剃须刀头已损坏或磨损。	更换剃须刀头。见“更换”一章。
向上推动开关滑钮时剃须刀不工作。	电池已耗尽。	更换电池。见“使用准备”一章。
	电池放置不正确。	确保电池的正负极指示与电池仓内的正负极指示一致（见“使用准备”一章）。
皮肤过敏。	您的皮肤需要一定的时间来适应飞利浦剃须刀。	开始使用时的 2-3 周内，皮肤过敏是正常情况。在此之后，通常不再会出现皮肤过敏现象。