

www.alcatelone touch.com



For more information about how to use the phone, please go to www.alcatelone touch.com to download complete user manual. Moreover, from the website you can also consult FAQ, realize software upgrade, etc.

Note:

This is a shared user manual for one touch 918/one touch 918N/one touch 918D specifying Dual SIM information where relevant.

Table of Contents

Safety and use	4
General information	9
1 Your mobile	12
1.1 Keys and connectors.....	12
1.2 Getting started	14
1.3 Home screen.....	19
2 Text input	29
2.1 Using Onscreen Keyboard.....	29
2.2 Text editing.....	30
3 Phone call, Call log and Contacts	31
3.1 Phone	31
3.2 Call log.....	37
3.3 Contacts	38
4 Google Messaging, Gmail/Email, Google Talk	46
4.1 Google Messaging	46
4.2 Gmail/Email.....	52
4.3 Google Talk	57
5 Google Calendar & Clock & Calculator & News & Weather	61
5.1 Google Calendar	61
5.2 Clock.....	63
5.3 Calculator.....	64
5.4 News & Weather.....	66

6 Getting connected	68
6.1 Connecting to the Internet	68
6.2 Browser.....	72
6.3 Connecting to Bluetooth devices	81
6.4 Connecting to a computer via USB.....	83
6.5 Sharing your phone's mobile data connection.....	85
6.6 Connecting to virtual private networks.....	86
6.7 Configuring Internet (SIP) calling.....	88
7 Android Market	90
7.1 Locate the item you want to download and install.....	90
7.2 Download and install.....	91
7.3 Manage your downloads.....	93
8 Multimedia applications	95
8.1 Camera	95
8.2 Gallery	98
8.3 YouTube.....	101
8.4 Music.....	102
9 Google Maps	105
9.1 Get My Location	105
9.2 Search for a location	106
9.3 Star a location.....	107
9.4 Get driving, public transport or walking directions.....	108
9.5 Arrangement of Layers	110
9.6 Join Latitude to see your friends' locations and share yours with them	
10 Others	115
10.1 File Manager	115
10.2 Sound Recorder	116
10.3 FM Radio	116
10.4 Battery Saver.....	117
10.5 Setup Wizard	117
10.6 Traffic Manager.....	118
10.7 Alcatel Help.....	118
10.8 Other applications	118

11 Settings	119
11.1 SIM management	119
11.2 Wireless & networks	120
11.3 Call settings	123
11.4 Audio profiles.....	126
11.5 Display.....	127
11.6 Location.....	128
11.7 Applications.....	131
11.8 Accounts & sync.....	134
11.9 Privacy.....	135
11.10 SD card & phone storage.....	136
11.11 Language & keyboard	137
11.12 Voice input & output.....	141
11.13 Accessibility	143
11.14 Date & time.....	143
11.15 Schedule power on/off.....	144
11.16 About phone	144
12 Making the most of your phone	146
12.1 Android Manager.....	146
12.2 One Touch Upgrade.....	147
13 Telephone warranty	148
14 Accessories	150
15 Troubleshooting	151
16 Specifications	156



www.sar-tick.com

This product meets applicable national SAR limits of 2.0 W/kg. The specific maximum SAR values can be found on page 7 of this user guide.

When carrying the product or using it while worn on your body, either use an approved accessory such as a holster or otherwise maintain a distance of 1.5 cm from the body to ensure compliance with RF exposure requirements. Note that the product may be transmitting even if you are not making a phone call.

Safety and use.....

We recommend that you read this chapter carefully before using your phone. The manufacturer disclaims any liability for damage, which may result as a consequence of improper use or use contrary to the instructions contained herein.

• TRAFFIC SAFETY:

Given that studies show that using a mobile phone while driving a vehicle constitutes a real risk, even when the hands-free kit is used (car kit, headset...), drivers are requested to refrain from using their mobile when the vehicle is not parked.

When driving, do not use your phone and headphone to listen to music or to the radio. Using a headphone can be dangerous and forbidden in some areas.

When switched on, your phone emits electromagnetic waves that can interfere with the vehicle's electronic systems such as ABS anti-lock brakes or airbags. To ensure that there is no problem:

- do not place your phone on top of the dashboard or within an airbag deployment area,
- check with your car dealer or the car manufacturer to make sure that the dashboard is adequately shielded from mobile phone RF energy.

• CONDITIONS OF USE:

You are advised to switch off the telephone from time to time to optimise its performance.

Switch the phone off before boarding an aircraft.

Switch the phone off when you are in health care facilities, except in designated areas. As with many other types of equipment now in regular use, mobile telephones can interfere with other electrical or electronic devices, or equipment using radio frequency.

Switch the phone off when you are near gas or flammable liquids. Strictly obey all signs and instructions posted in a fuel depot, petrol station, or chemical plant, or in any potentially explosive atmosphere.

When the phone is switched on, it should be kept at least 15 cm from any medical device such as a pacemaker, a hearing aid or insulin pump, etc. In particular when using the phone, you should hold it against the ear on the opposite side to the device, if any.

To avoid hearing impairment, pick up the call before holding your phone to your ear. Also move the handset away from your ear while using the "hands-free" mode because the amplified volume might cause hearing damage.

Do not let children use the phone and/or play with the telephone and accessories without supervision.

When replacing the cover please note that your phone may contain substances that could create an allergic reaction.

Always handle your phone with care and keep it in a clean and dust-free place.

Do not allow your phone to be exposed to adverse weather or environmental conditions (moisture, humidity, rain, infiltration of liquids, dust, sea air, etc). The manufacturer's recommended operating temperature range is -10°C to +55°C.

At over 55°C the legibility of the phone's display may be impaired, though this is temporary and not serious.

Emergency call numbers may not be reachable on all cellular networks. You should never rely only on your phone for emergency calls.

Do not open, dismantle or attempt to repair your mobile phone yourself.

Do not drop, throw or bend your mobile phone.

Do not use the phone if the glass made screen, is damaged, cracked or broken to avoid any injury.

Do not paint it.

Use only batteries, battery chargers, and accessories which are recommended by TCT Mobile Limited and its affiliates or are compatible with your phone model. TCT Mobile Limited and its affiliates disclaim any liability for damage caused by the use of other chargers or batteries.

Remember to make back-up copies or keep a written record of all important information stored in your phone.

Some people may suffer epileptic seizures or blackouts when exposed to flashing lights, or when playing video games. These seizures or blackouts may occur even if a person never had a previous seizure or blackout. If you have experienced seizures or blackouts, or if you have a family history of such occurrences, please consult your doctor before playing video games on your phone or enabling a flashing-lights feature on your phone.

Parents should monitor their children's use of video games or other features that incorporate flashing lights on the phones. All persons should discontinue use and consult a doctor if any of the following symptoms occur: convulsion, eye or muscle twitching, loss of awareness, involuntary movements, or disorientation. To limit the likelihood of such symptoms, please take the following safety precautions:

- Do not play or use a flashing-lights feature if you are tired or need sleep.
- Take a minimum of a 15-minute break hourly.
- Play in a room in which all lights are on.
- Play at the farthest distance possible from the screen.
- If your hands, wrists, or arms become tired or sore while playing, stop and rest for several hours before playing again.
- If you continue to have sore hands, wrists, or arms during or after playing, stop the game and see a doctor.

When you play games on your phone, you may experience occasional discomfort in your hands, arms, shoulders, neck, or other parts of your body. Follow the instructions to avoid problems such as tendinitis, carpal tunnel syndrome, or other musculoskeletal disorders.



Prolonged exposure to music at full volume on the music player may damage the listener's hearing.

Set your phone volume safely. Use only headphones recommended by TCT Mobile Limited and its affiliates.

• PRIVACY:

Please note that you must respect the laws and regulations in force in your jurisdiction or other jurisdiction(s) where you will use your mobile phone regarding taking photographs and recording sounds with your mobile telephone. Pursuant to such laws and regulations, it may be strictly forbidden to take photographs and/or to record the voices of other people or any of their personal attributes, and duplicate or distribute them, as this may be considered to be an invasion of privacy. It is the user's sole responsibility to ensure that prior authorisation be obtained, if necessary, in order to record private or confidential conversations or take a photograph of another person; the manufacturer, the seller or vendor of your mobile phone (including the operator) disclaim any liability which may result from the improper use of the mobile phone.

• BATTERY:

Before removing the battery from your phone, please make sure that the phone is switched off.

Observe the following precautions for battery use:

- Do not attempt to open the battery (due to the risk of toxic fumes and burns).
- Do not puncture, disassemble or cause a short-circuit in a battery,
- Do not burn or dispose of a used battery in household rubbish or store it at temperatures above 60°C.

Batteries must be disposed of in accordance with locally applicable environmental regulations. Only use the battery for the purpose for which it was designed. Never use damaged batteries or those not recommended by TCT Mobile Limited and/or its affiliates.



This symbol on your telephone, the battery and the accessories means that these products must be taken to collection points at the end of their life:

- Municipal waste disposal centres with specific bins for these items of equipment
- Collection bins at points of sale.

They will then be recycled, preventing substances being disposed of in the environment, so that their components can be reused.

In European Union countries:

These collection points are accessible free of charge.

All products with this sign must be brought to these collection points.

In non European Union jurisdictions:

Items of equipment with this symbol are not to be thrown into ordinary bins if your jurisdiction or your region has suitable recycling and collection facilities; instead they are to be taken to collection points for them to be recycled.

CAUTION: RISK OF EXPLOSION IF BATTERY IS REPLACED BY AN INCORRECT TYPE. DISPOSE OF USED BATTERIES ACCORDING TO THE INSTRUCTIONS.

• CHARGERS

Mains powered chargers will operate within the temperature range of: 0°C to 40°C.

The chargers designed for your mobile phone meet with the standard for safety of information technology equipment and office equipment use. They are also compliant to the ecodesign directive 2009/125/EC. Due to different applicable electrical specifications, a charger you purchased in one jurisdiction may not work in another jurisdiction. They should be used for this purpose only.

• RADIO WAVES:

Proof of compliance with international standards (ICNIRP) or with European Directive 1999/5/EC (R&TTE) is required of all mobile phone models before they can be put on the market. The protection of the health and safety for the user and any other person is an essential requirement of these standards or this directive.

THIS DEVICE MEETS INTERNATIONAL GUIDELINES FOR EXPOSURE TO RADIO WAVES.

Your mobile device is a radio transmitter and receiver. It is designed not to exceed the limits for exposure to radio waves (radio frequency electromagnetic fields) recommended by international guidelines. The guidelines were developed by an independent scientific organization (ICNIRP) and include a substantial safety margin designed to assure the safety of all persons, regardless of age and health.

The radio wave exposure guidelines use a unit of measurement known as the Specific Absorption Rate, or SAR. The SAR limit for mobile devices is 2 W/kg.

Tests for SAR are conducted using standard operating positions with the device transmitting at its highest certified power level in all tested frequency bands. The highest SAR values under the ICNIRP guidelines for this device model are:

Maximum SAR for this model and conditions under which it was recorded.		
Head SAR	UMTS 2100 + Wi-Fi + Bluetooth	1.12 W/kg (one touch 918N)
		1.12 W/kg (one touch 918D)
Body-worn SAR	GSM 900 + Wi-Fi + Bluetooth	0.677 W/kg (one touch 918N) 0.603 W/kg (one touch 918D)

During use, the actual SAR values for this device are usually well below the values stated above. This is because, for purposes of system efficiency and to minimize interference on the network, the operating power of your mobile device is automatically decreased when full power is not needed for the call. The lower the power output of the device, the lower its SAR value.

Body-worn SAR testing has been carried out at a separation distance of 1.5 cm. To meet RF exposure guidelines during body-worn operation, the device should be positioned at least this distance away from the body. If you are not using an approved accessory ensure that whatever product is used is free of any metal and that it positions the phone the indicated distance away from the body.

Organizations such as the World Health Organization and the US Food and Drug Administration have stated that if people are concerned and want to reduce their exposure they could use a hands-free device to keep the phone away from the head and body during phone calls, or reduce the amount of time spent on the phone.

For more information you can go to www.alcatelonetouch.com

Additional information about electromagnetic fields and public health are available on the following site: <http://www.who.int/peh-emf>.

Your telephone is equipped with a built-in antenna. For optimal operation, you should avoid touching it or degrading it.

As mobile devices offer a range of functions, they can be used in positions other than against your ear. In such circumstances the device will be compliant with the guidelines when used with headset or usb data cable. If you are using another accessory ensure that whatever product is used is free of any metal and that it positions the phone at least 1.5 cm away from the body.

• LICENCES



microSD Logo is a trademark.



The Bluetooth word mark and logos are owned by the Bluetooth SIG, Inc. and any use of such marks by TCT Mobile Limited and its affiliates is under license. Other trademarks and trade names are those of their respective owners.

**one touch 918/one touch 918N/
one touch 918D Bluetooth QD ID
B018542**



TouchPal™ and CooTek™ are trademarks of Shanghai HanXiang (CooTek) Information Technology Co., Ltd. and/or its Affiliates.



The Wi-Fi Logo is a certification mark of the Wi-Fi Alliance.

Your device uses non-harmonised frequency and is intended for use in all European countries. The WLAN can be operated in the EU without restriction indoors, but cannot be operated outdoors in France.

Google, the Google logo, Android, the Android logo, Google Search™, Google Maps™, Gmail™, YouTube, Android Market, Google Latitude™ and Google Talk™ are trademarks of Google Inc.

General information

- **Internet address:** www.alcatelonetouch.com
- **Hot Line Number:** see “TCT Mobile Services” leaflet or go to our website.

On our website, you will find our FAQ (Frequently Asked Questions) section. You can also contact us by e-mail to ask any questions you may have.

An electronic version of this user guide is available in English and other languages according to availability on our server:

www.alcatelonetouch.com

Your telephone is a transceiver that operates on GSM/GPRS/EDGE in quad-band with 850/900/1800/1900 MHz or UMTS in dual-band with 900/2100MHz (one touch 918/one touch 918D); 850/2100MHz (one touch 918N).



This equipment is in compliance with the essential requirements and other relevant provisions of Directive 1999/5/EC. The entire copy of the Declaration of Conformity for your telephone can be obtained through our website: www.alcatelonetouch.com.

This equipment may be operated in:				AT	BE
CY	CZ	DK	EE	FI	FR
DE	GR	HU	IE	IT	LV
LT	LU	MT	NL	PL	PT
SK	SI	ES	SE	GB	IS
LI	NO	CH	BG	RO	TR

Protection against theft ⁽¹⁾

Your telephone is identified by an IMEI (phone serial number) shown on the packaging label and in the phone's memory. We recommend that you note the number the first time you use your telephone by entering * # 0 6 # and keep it in a safe place. It may be requested by the police or your operator if your telephone is stolen. This number allows your mobile telephone to be blocked preventing a third person from using it, even with a different SIM card.

Disclaimer

There may be certain differences between the user manual description and the phone's operation, depending on the software release of your telephone or specific operator services.

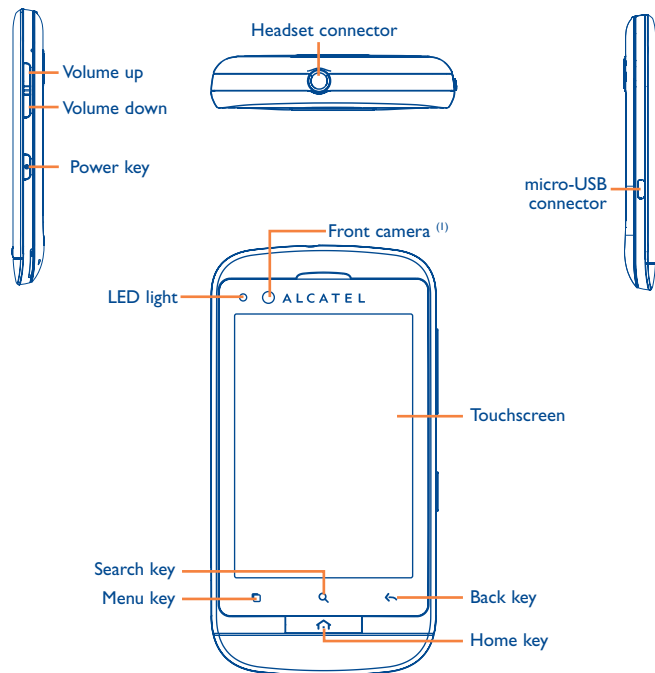
TCT Mobile shall not be held legally responsible for such differences, if any, nor for their potential consequences, which responsibility shall be borne by the operator exclusively.

⁽¹⁾ Contact your network operator to check service availability.

This handset may contain materials, including applications and software in executable or source code form, which is submitted by third parties for inclusion in this handset (“Third Party Materials”). All third party materials in this handset are provided “as is”, without warranty of any kind, whether express or implied, including the implied warranties of merchantability, fitness for a particular purpose or use/third party application, interoperability with other materials or applications of the purchaser and non-infringement of copyright. The purchaser undertakes that TCT Mobile has complied with all quality obligations incumbent upon it as a manufacturer of mobile devices and handsets in complying with Intellectual Property rights. TCT Mobile will at no stage be responsible for the inability or failure of the Third Party Materials to operate on this handset or in interaction with any other devices of the purchaser. To the maximum extent permitted by law, TCT Mobile disclaims all liability for any claims, demands, suits or actions, and more specifically – but not limited to – tort law actions, under any theory of liability, arising out of the use, by whatever means, or attempts to use, such Third Party Materials. Moreover, the present Third Party Materials, which are provided free of charge by TCT Mobile, may be subject to paid updates and upgrades in the future; TCT Mobile waives any responsibility regarding such additional costs, which shall be borne exclusively by the purchaser. The availability of the applications may vary depending on the countries and the operators where the handset is used; in no event shall the list of possible applications and software provided with the handsets be considered as an undertaking from TCT Mobile; it shall remain merely as information for the purchaser. Therefore, TCT Mobile shall not be held responsible for the lack of availability of one or more applications wished for by the purchaser, as its availability depends on the country and the operator of the purchaser. TCT mobile reserves the right at any time to add or remove Third Party Materials from its handsets without prior notice; in no event shall TCT Mobile be held responsible by the purchaser for any consequences that such removal may have on the purchaser regarding the use or attempt to use such applications and Third Party Materials.

Your mobile.....

1.1 Keys and connectors



⁽¹⁾ Depending on your model.

- On Home screen, press to quickly access **Settings** menu or Notification panel; to launch quick search; to manage applications; to customize your Home screen by adding applications or changing wallpaper.

- On other screens, press to view options list.

Short press: Light up the screen

Return to the Home screen or back to the central Home screen if it is extended.

Long press: Enter the recently used applications list.

Go back to the previous menu or screen.

Short press: Lock the screen

Light up the screen

Long press: When phone is off, power on the phone.

When phone is on, enter Phone options:
Silent mode, Airplane mode, Power off.

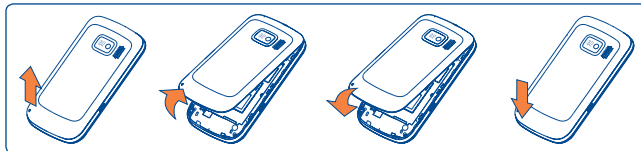
Press to adjust the Volume (in call/media playing mode)

Open Search bar for searching within an application, the phone or web.

1.2 Getting started

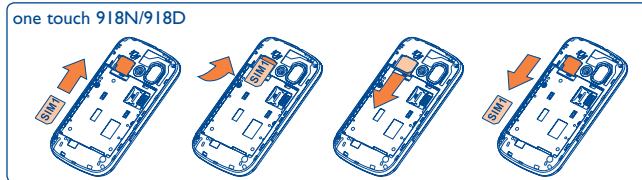
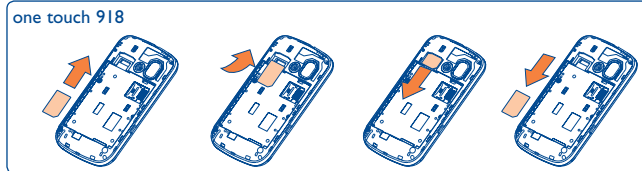
1.2.1 Set-up

Removing or installing the back cover



Inserting or removing the SIM card ⁽¹⁾

You must insert your SIM card to make phone calls. Please power off your phone and remove battery before inserting or removing the SIM card.



Place the SIM card with SIM1 chip facing downwards and SIM2 chip facing upwards, and then slide it into its housing. Make sure that it is correctly inserted. To remove the card, press and slide it out.

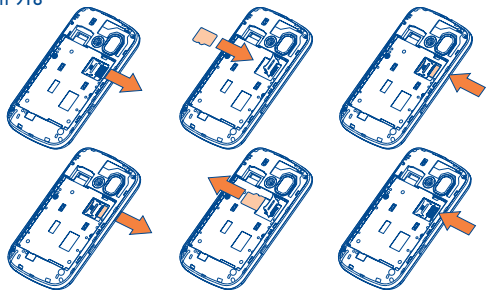
⁽¹⁾ Check with your network operator to make sure that your SIM card is 3V or 1.8V compatible. The old 5 volt cards can no longer be used.



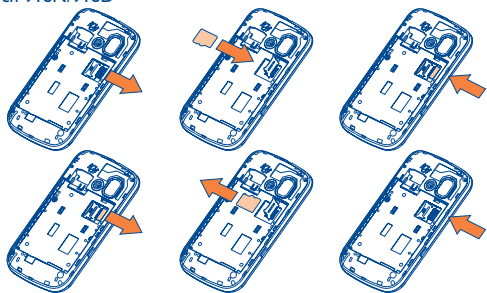
For dual SIM model, the SIM1 slot can support both 2G and 3G network, while the SIM2 slot can only support a 2G network.

Installing and removing the microSD card

one touch 918

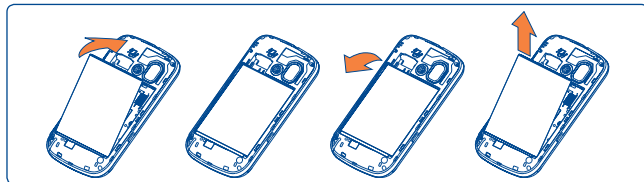


one touch 918N/918D



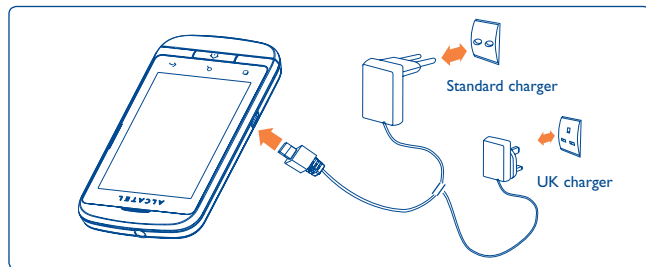
To release the microSD card holder, slide it in the direction of the arrow and lift it. Then insert the microSD card with the golden contact downward. Finally, turn down the microSD holder and slide it in the opposite direction to lock it.

Installing or removing the battery



- Insert and click the battery into place, then close the phone cover.
- Unclip the cover, then remove the battery.

Charging the battery



Connect the battery charger to your phone and mains socket respectively.

- The LED light will be lit up during battery charging.
- Be careful not to force the plug into the socket.
- Make sure the battery is correctly inserted before connecting the charger.

- The mains socket must be near to the phone and easily accessible (avoid electric extension cables).
- When using your telephone for the first time, charge the battery fully (approximately 4 hours).

You are advised to fully charge the battery (🔋). Charging status is indicated by the depth of water on the lock screen. The depth increases as the phone is charged.



To reduce power consumption and energy waste, when battery is fully charged, disconnect your charger from the plug; switch off Wi-Fi, GPS, Bluetooth or background-running applications when not in use; reduce the backlight time, etc.

1.2.2 Power on your phone

Hold down the **Power** key until the phone powers on, type in your PIN code if necessary and then confirm. The Home screen is displayed.

If you do not know your PIN code or if you have forgotten it, contact your network operator. Do not leave your PIN code with your telephone. Store this information in a safe place when not in use.

Set up your phone for the first time

The first time you power on the phone, you're are prompted to set up your phone in multiple ways: language, input method, mobile data connection, account setup and synchronization, system update, etc. You are required to sign into your Google account to synchronize email, contacts, calendar and other Google applications ⁽¹⁾.

- Enter your user name and password, then touch **Sign in**. If you forget your password, you can go to <http://www.google.com/> to retrieve it. If you don't own a Google Account, you are prompted to create one by touching **Create**.
- Read the setup information on the screen.
- Mark/Unmark the check box to choose whether you want to take advantage of Google's location service, then touch **Next**.
- Mark/Unmark the check box to choose whether you want to back up data with your Google account, then touch **Next**.
- Touch **Finish setup**.



This initial set up can be skipped and enabled via **Settings > Accounts & sync**.

In power on screen without SIM card inserted, you can also connect to a Wi-Fi network (refer to section 6.1.2 Wi-Fi) to sign into your Google account and to use some features.

The first time you insert a new SIM card, you are given the option to change the default SIM settings (refer to section 11.1 SIM management).

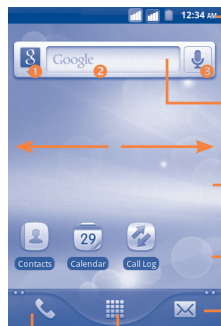
1.2.3 Power off your phone

Hold down the **Power** key from the Home screen until the phone options appear, select **Power off**.

⁽¹⁾ Application availability depends on country and operator.

1.3 Home screen

You can bring all the items (applications, shortcuts, folders and widgets) you love or use most frequently to your Home screen for quick access. Press **Home** key to switch to Home screen.



Status bar

- Status/Notification indicators
- Touch and Drag down to open notification panel.

Search bar

Touch **1** to enter Search options: All, Web, Apps, Contacts, etc.
Touch **2** to enter text search screen.
Touch **3** to enter voice search screen.

Touch an icon to open an application, folder, etc.

Touch to access **Messaging**

Application tab

Touch to open applications list.
Long press to display thumbnails.

Touch to access **Call log** if you have missed call(s).

Home screen is provided in an extended format to allow more space for adding applications, shortcuts etc. Slide the Home screen horizontally left and right to get a complete view of the Home screen. Small dots at the lower left and right of the screen indicate which screen you are viewing.

1.3.1 Using the touchscreen

Touch



To access an application, touch it with your finger.

Touch and Hold



To enter the available options for an item, touch and hold the item. For example, select a contact in Contacts, touch and hold this contact, options list will then appear on screen.

Drag



Place your finger on the screen to drag an object to another location.

Slide/Swipe



Slide the screen to scroll up and down the applications, images, web pages... at your convenience. You could slide the screen horizontally too.

Flick



Similar to swiping, but flicking makes it move quicker.

Pinch/Spread



Place your fingers of one hand on the screen surface and draw them apart or together to scale an element on the screen.

Rotate















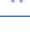















Automatically change the screen orientation from portrait to landscape by turning the phone sideways to have a better screen view.

1.3.2 Status bar




























From status bar, you can view both phone status (to the right side) and notification information (to the left side). When the status bar is full, “+” icon will appear, touch to display hidden icons.

Status icons

For dual SIM model, status icons referring to either SIM1 or SIM2 will be identified by a colour which you have defined.

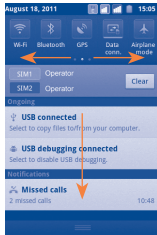
	GPRS connected		Receiving location data from GPS
	GPRS in use		Speakerphone is on
	EDGE connected		Roaming
	EDGE in use		No signal
	3G connected		Vibrate mode
	3G in use		Ringer is silenced
	HSPA (3G+) connected		Phone microphone is mute
	HSPA (3G+) in use		Battery is very low
	Connected to a Wi-Fi network		Battery is low
	Bluetooth is on		Battery is partially drained
	Connected to a Bluetooth device		Battery is full
	Airplane mode		Battery is charging
	Alarm is set		Headset connected
	GPS is on		Signal strength

Notification icons

	New Gmail message		Call in progress (green)
	New text or multimedia message		Call in progress using Bluetooth headset (blue)
	Problem with text or multimedia message delivery		Missed call
	New Google Talk message		Call on hold
	New voicemail		Call forwarding is on
	Upcoming event		Uploading data
	Data is synchronizing		Downloading data
	Problem with sign-in or synchronization		An open Wi-Fi network is available
	microSD card is full		Phone is connected via USB cable
	Connected to or disconnected from VPN		Radio is on
	Song is playing		System update available
	USB tethering is on		Portable Wi-Fi hotspot is on
	Both USB tethering and portable hotspot are on		Application update available
	More notifications are hidden		

Notification panel

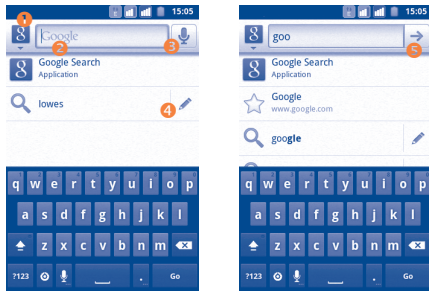
Touch and drag down the Status bar or press **Menu** key and touch **Notifications** to open the notification panel. Touch and drag up to close it. From the Notification panel, you can open some functions by touch (GPS, Bluetooth, etc.), reminders indicated by notification icons, or view wireless service information.



Touch **Clear** to clear all event-based notifications (other ongoing notifications will remain).


1.3.3 Search bar

The phone provides a Search function which can be used to locate information within applications, the phone or the web.




- 1 Touch to enter targets of Search: All, Web, Apps, Contacts, etc.
- 2 Touch to search by text
- 3 Touch to search by voice
- 4 Touch to enter the suggested text for quick search
- 5 Touch to search the web

Search by text

- Touch Search bar from Home screen or press **Search** key from other applications screen.
- Enter the text/phrase you want to search for. A list of search results will be displayed for you to select from.
- Touch  to search the web.

Search by voice

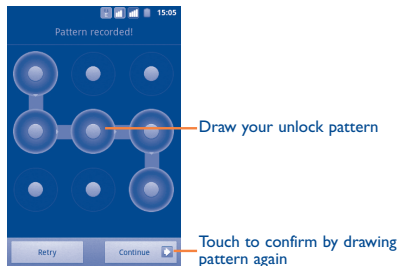
- Touch  from Search bar to display a dialog screen.
- Speak the word/phrase you want to search for. A list of search results will display for you to select from.

1.3.4 Lock/Unlock your screen

To protect your phone and privacy, you can lock the phone screen by creating a variety of patterns, PIN or password etc.

To create a screen unlock pattern (refer to section 1.1.6.3 for detailed settings)

- Press **Menu** key from the home screen, touch **Settings**, then touch **Security/Set up screen lock/Pattern**.
- Draw your own pattern, you can also press **Menu** key for help.



To create a screen unlock PIN/Password

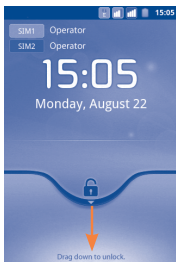
- Press **Menu** key from the home screen, touch **Settings**, then touch **Security\Set up screen lock\PIN or Password**.
- Set your PIN or password.

To lock phone screen

Press **Power** key once to lock the screen.

To unlock phone screen

Draw the unlock pattern you have created or enter PIN or password to wake up the screen. If you did not set the unlock screen, drag down the lock icon to unlock it.



1.3.5 Personalize your home screen

Add

Touch and hold an empty area or press **Menu** key and touch **Add** on the Home screen. The **Add to Home screen** will appear, offering a range of options.

- **Shortcuts** To add a shortcut to Home screen, such as applications, bookmark, contact, etc.
- **Widgets** To add a widget to Home screen, such as clock, music player, etc.
- **Folders** To add a folder to Home screen, such as new folder, contact folder, etc.

To improve the organization of the Home screen items (shortcuts, widgets), you can add them to a folder by touching and dragging them onto the folder of your choice. To rename a folder, open it, touch and hold the folder's title bar to open the Rename folder dialog box, then enter the new folder name and confirm with **OK**.

Reposition

Touch and hold the item to be repositioned to activate the Move mode, drag the item to the desired position and then release. Hold the icon on the left or right edge of the screen to drag the item to another Home screen page.

Remove

Touch and hold the item to be removed to activate the Move mode, drag the item to the bottom trash can, which will then turn red, and release.

Wallpaper customization

Touch and hold an empty area or press **Menu** key and touch **Wallpaper** on the Home screen, a popup window named **Select wallpaper from** will appear, offering a range of options. **Gallery** includes pictures you have taken, cropped or downloaded. **Live wallpapers** include a scrolling list of animated wallpapers to choose from. **Wallpaper gallery** includes all preset wallpapers in the phone. Slide left and right to locate a desired image, touch **Set wallpaper** to confirm.

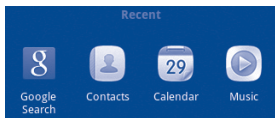
1.3.6 Application tab

Touch  on Home screen to enter applications list.

To return to the Home screen, press **Home** key.

Consult recently-used applications

To consult recently-used applications, you can press and hold the **Home** key from Home screen. Touch an icon in the window to open the related application.



1.3.7 Volume adjustment

Using volume key

Press **Volume up/down** key to adjust the volume. While in the lowest volume level, your phone will be switched to Silent mode. ⁽¹⁾

Using Settings menu

Press **Menu** key from Home screen, then touch **Settings\Audio profiles**, you can set alarm, media and phone ringtone volume to your preference.

⁽¹⁾ The phone setting will vary depending on the changes made to the default settings in **Settings\Audio profiles\Silent**.

2 Text input

2.1 Using Onscreen Keyboard

Onscreen keyboard will display automatically when a program requires entering text or numbers.

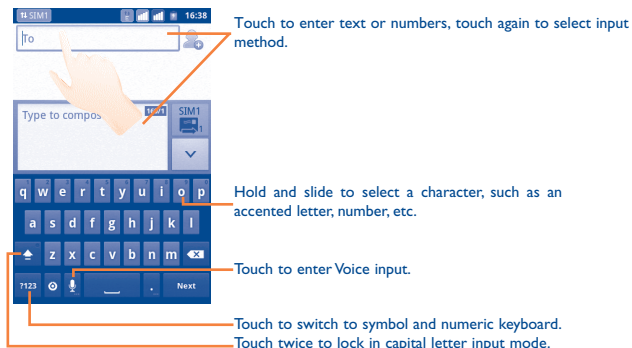
Onscreen keyboard settings

Press **Menu** key from Home screen, select **Settings\Language & keyboard\TouchPal keyboard** or **Android keyboard**, a series of settings are available for your selection.

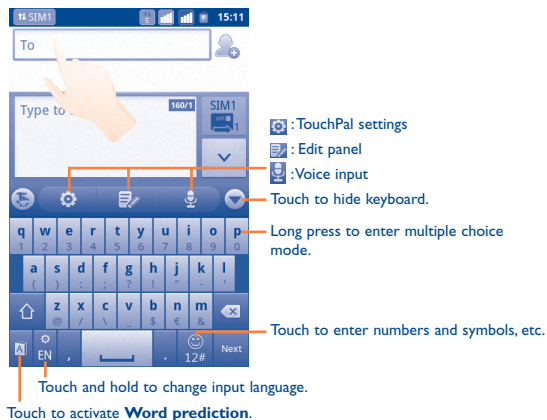
Adjust the onscreen keyboard orientation

Turn the phone sideways or upright to adjust the onscreen keyboard orientation. You can also adjust it by settings (Press **Menu** key on **Home screen\Settings\Display**).

2.1.1 Android keyboard



2.1.2 TouchPal keyboard



2.2 Text editing

You can edit the text you have entered.

- Touch the text you have entered twice. Touch and hold a text field to zoom in on the text with a magnifying glass.
- Touch **Select all/Select word** in the pop up button.
- The selected text is now highlighted in orange. Drag a selection tab to adjust the range of selected text.
- Touch **Cut/Copy/Paste** ⁽¹⁾ in the pop up button.

⁽¹⁾ 'Paste' option will not appear unless copy or cut operation has been made.

3 Phone call, Call log and Contacts

3.1 Phone

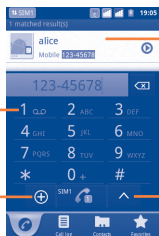


3.1.1 Placing a call

The user can easily start a call using **Phone**.

Enter this menu using one of the following two ways:

- Touch from Home screen.
- Touch from Home screen and select **Phone**.



Scroll up or down to view matched results

Touch and hold to access voicemail

Touch to add to Contacts

Touch to switch call connection method

Enter the desired number from the keyboard directly or select a contact from **Contacts**, **Call log** or **Favourites** by touching tabs, then touch to place a voice call/video call. The number you entered can be saved to **Contacts** by touching .

If you make a mistake, you can delete the incorrect digits by touching .

To hang up a call, touch **End**.

International call

To dial an international call, touch and hold to enter “+”, then enter the international country prefix followed by the full phone number and finally touch .

Emergency call

If your phone has network coverage, dial emergency number and touch to make an emergency call. This works even without a SIM card and without typing the PIN code.

Internet (SIP) call

If you have configured your phone to use an Internet calling account, you can place a voice call via a Wi-Fi network. For more details about adding or configuring an account, refer to section 6.7 Configuring Internet (SIP) calling.

You can initiate an Internet call from the Quick Contact bar or **Phone** tab.

3.1.2 Answering or rejecting a call

Indicates the SIM card you're using



When you receive an incoming call, drag down the green phone icon to answer. Hang up the call by touching **End**.

When you receive an incoming call, but don't want to answer, you may decline it by dragging up the red phone icon. The caller is sent directly to your voicemail box to leave a message. Or to reject a call with an SMS, by pressing the **Menu** key and touching **Send message**.

To mute the ringtone volume of an incoming call, press **Volume up/down** key.

3.1.3 Calling your voicemail

Your voicemail is provided by your network to avoid missing calls. It works like an answering machine that you can consult at any time.

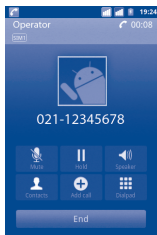
To access your voicemail, touch and hold  on **Phone** tab.

To set your voicemail number, enter **Settings\Call settings\Voice call\Voicemail**.

If you receive a voicemail, a voicemail icon  appears on the Status bar. Open the Notification panel, touch **New voicemail**.

3.1.4 During a voice call

When a call is in progress, press **Menu** key to open the call options. Touch **Bluetooth** to switch between headset and phone or touch **Start recording** to record the call. To adjust the volume during a call, press **Volume up/down** key.



Touch to hold the current call. Touch this icon again to retrieve the call.



Touch to mute the current call. Touch this icon again to unmute the call.



Touch to activate the speaker during the current call. Touch this icon again to deactivate the speaker.



Touch to access **Contacts** or call a contact.



Touch to add a caller by entering their phone number.



Touch to display Dialpad.



Touch to end the current call.



To avoid misoperation on touchscreen during call, screen will be locked automatically when user put the phone close to ear, and it will be unlocked when put the phone away.

3.1.5 Managing multiple voice calls



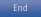
With this phone you can handle multiple voice calls at the same time.

Swap calls

When you have accepted two calls, touch **Swap** to alternate between them. You can now switch between two lines. The current call is put on hold and you have joined in the other call.

Conference calls ⁽¹⁾

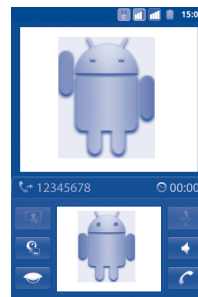
You can set up a conference call.

- Place a call to the first participant of the conference call.
- Touch  to add another call.
- Enter the phone number of the person you want to add to conference and touch icon . You can also add participants from **Contacts**, **Call log** or **Favourites**.
- Touch **Merge calls** to start the conference call.
- During a conference call, touch **Manage** to drop a participant or to talk privately to one of the participants. Touch **End** to drop the participant from the conference, touch **Private** to talk privately to the participant and hold on other participants.
- Touch  to end the conference call and disconnect all callers.

⁽¹⁾ Depending on your network operator.

3.1.6 During a video call ⁽¹⁾

When a call is in progress, press **Menu** key to open the call options.



Touch to take a picture.



Touch to switch between front camera and back camera.



Touch to turn off local video.



Touch to mute the current call. Touch this icon again to unmute the call.



Touch to activate the speaker during the current call. Touch this icon again to deactivate the speaker.








Touch to end the current call.






⁽¹⁾ Depending on your model and network operator.

3.2 Call log.....



You can access your call memory by touching  from the Home screen and touching **Call log**. Touch contact/number to place a call directly. Touch  for communicating with that contact in other ways. There are three kind of calls in Call log:

-  Missed calls
-  Incoming calls
-  Outgoing calls

Touch , , ,  to view the call types sorted by: All calls, Missed calls, Outgoing calls or Incoming calls. You can also touch  to view calls sorted by All resources, SIM1, SIM2 or Internet.

Touch or touch & hold a contact or number to view information or further operations.

You can view detailed information of a call, launch a new call or send message to a contact or number, or add number to **Contacts** (only available for phone numbers), etc.

To clear the entire call memory, press **Menu** key then touch **Clear call log**.

3.3 Contacts.....

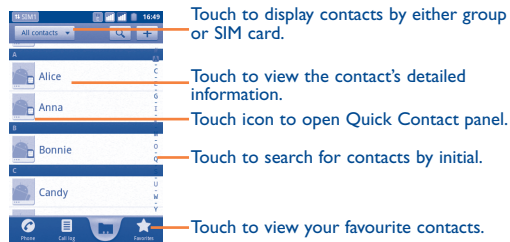


Contacts enables quick and easy access to the people you want to reach.

You can view and create contacts on your phone or either SIM and synchronize these with your Gmail contacts or other applications on the web or on your phone.

3.3.1 Consult your Contacts

To access the **Contacts**, touch Application tab on the Home screen, then select **Contacts**.



Touch and hold a contact to display its option menu.
You can also press **Menu** key to display contacts list option menu.

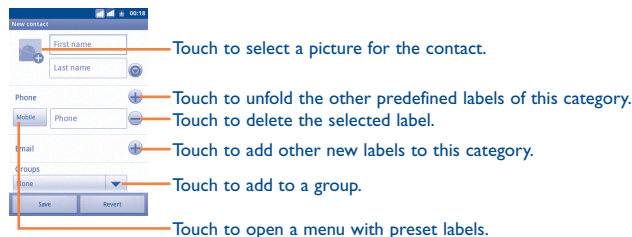
Following actions are enabled:

- **Search** Touch to search for a contact.
- **Group** Assign contacts to groups so that one SMS/MMS or email can easily be sent to all members.
- **Setting speed dial** Add a contact's phone number as a speed dial number. Digits 2 to 9 are available.
- **New contact** Add new contact to phone.
- **Delete contact** Select and delete unwanted contacts.
- **MoreDisplay options** Choose contacts to display, for example only contacts with phones, other application contacts if any, etc.
- **MoreAccounts** Manage the synchronization settings for different accounts.
- **MoreImport/Export** Import or export contacts between phone, SIM card, and microSD card.
- **MoreShare visible contacts** Share contacts with others by sending the contact's vCard to them via Bluetooth, SMS, Email, etc.

3.3.2 Adding a contact


Press **Menu** key from contacts list screen and touch **New contact**. You're required to select the location (**Phone/SIM1/SIM2**) to save the contact.


You are required to enter the contact's name and other contact information. By scrolling up and down the screen, you can move from one field to another easily.



When finished, touch **Save**.

Add to/remove from Favourites

To add a contact to favourites, touch and hold a contact to display the contact's option menu, then touch **Add to Favourites**. Or you can also touch a contact to view details then touch  to add the contact to favourites (the star will turn gold in color).

To remove a contact from favourites, select **Remove from Favourites** on the contact's option menu or touch gold star  on contact details screen.

3.3.3 Editing your contacts

To edit contact information, touch and hold the contact whose information is to be edited, then touch **Edit contact**. When finished, touch **Save**.

Change a contact's default phone number

The default phone number (the number which has priority when making a call or sending a message) will always be displayed under the contact name. To change the default phone number, touch and hold the number you want to set as the default number from the contact's details screen, then select **Make default number**. A ✓ appears after the number.

Block incoming calls/Set ringtone for a contact

On the contact's detail screen, press **Menu** key to display contacts list option menu, and touch **Options**, then select **Incoming calls** or **Ringtone**.

When one contact has been set to block incoming calls directly, if he/she calls, your phone doesn't ring and the caller will be sent directly to your voicemail.

Delete a contact

To delete a contact, press **Menu** key and touch **Delete contact** from contact details screen or directly touch & hold a contact from Contacts screen to display contacts list option menu then touch **Delete contact**. Touch **OK** to confirm.



The contact you have deleted will also be removed from other applications on phone or web the next time you synchronize your phone. A contact deleted from SIM1/SIM2 cannot be reinstated.

3.3.4 Communicating with your contacts

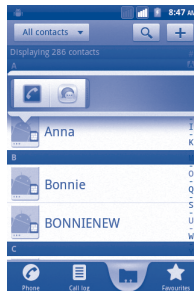
From the contacts list, you can communicate with your contacts by making a call or exchanging messages.

To launch a call to a contact, locate the contact or number you want to call, then touch . You can also touch & hold the number, then touch **Call contact**.

To send a message to a contact, touch & hold the contact or number you want to send a message to, then touch **Text contact**. You can also touch to the right side of the contact from contact details screen.

Use Quick contact for Android

Touch a contact's picture to open Quick Contact for Android, you can touch the icon for the way you want to connect.



The icons available on Quick Contact bar depend on the information you have for the contact and the applications and accounts on your phone.

3.3.5 Contacts importing, exporting and sharing

This phone enables you to import contacts from SIM card/microSD card and export contacts to a microSD card which can then be used to back up your information.

From Contacts screen, press **Menu** key to open the contacts list option menu, touch **More**|**Import/Export**. From here you can exchange contacts between Phone and SD card; Phone and SIM card; and SIM1 and SIM2, using the following steps:

- Select the location that you want to copy the contacts from, then touch **Next**.
- Select the location that you want to copy the contacts to, then touch **Next**.
- Touch the contact you want to copy, or mark the **Select all** check box, then touch **Copy** to confirm.

You can share a single contact or contacts with others by sending the contact's vCard to them via Bluetooth, SMS, Email, etc.

Touch a contact you want to share, press **Menu** key and touch **Share** from contact details screen, then select the application to perform this action.

3.3.6 Displaying contacts

You can configure which groups of contacts, for each account, you want to display in the Contacts list. To hide/display contacts that don't have phone numbers, press **Menu** key from contacts list screen, touch **More**|**Display options**, then activate or deactivate **Only contacts with phones** by touching it. Finally, touch **Done** to save. The same operation for other two options: **Phone Contacts**, **SIMs Contacts**, **Sort list by**, **View contact names as**.

3.3.7 Joining/Separating contacts

To avoid duplication, you can add any new contact information to existing contacts in a single action.

Touch the contact which you want to add information to, press **Menu** key and touch **Edit contact**, then press **Menu** key again and touch **Join**.

At this time, you are required to select the contact whose information you want to join with the first contact. The information from the second contact is added to the first one, and the second contact will no longer be displayed in the Contacts list.

To separate contact information, touch the contact whose information you want to separate, press **Menu** key and touch **Edit contact**, then press **Menu** key again and touch **Separate**.

3.3.8 Accounts

Contacts, data or other information can be synchronized from multiple accounts, depending on the applications installed on your phone.

To add an account, press **Menu** key from Contacts list, touch **More**|**Accounts**, then touch **Add account** tab; or access it by pressing **Menu** key from Home screen, touch **Settings**, then selecting **Accounts & Sync** and finally touching **Add account** tab.

You are required to select the kind of accounts to add, like Google, Facebook, etc.

As with other account set-ups, you need to enter detailed information, like username, password, etc.

You can remove an account to delete it and all associated information from the phone.

Open the **Accounts & sync settings** screen, touch the account you want to delete, then press **Menu** key and touch **Remove account** and confirm.

Useful icons:



Indicates that the account is configured to synchronize automatically with your phone.



Indicates that the account is not configured to synchronize automatically with your phone.

Background data

Activate or deactivate **Background data** to control whether applications or services data can be transmitted when they are running in the background. Applications can synchronize, send, and receive data at any time if activated.

For example, if deactivated, Gmail will stop receiving new emails until you touch the **Refresh** or send an email.

Auto-sync

When activated, all changes to information on the phone or online will be automatically synchronized to each other.

Sync manually

You can synchronize an account manually on **Accounts & sync settings** screen, and you must touch an account in the list on this screen, touch **Sync now**.

4 Google Messaging, Gmail/ Email, Google Talk

4.1 Google Messaging

You can create, edit and receive SMS and MMS with this mobile phone.

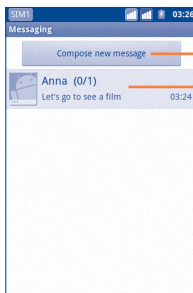
To access this feature, touch Application tab from Home screen, then select **Messaging**.



All messages you receive or send out can be saved in phone memory or SIM card. To consult messages stored in SIM card, press **Menu** key from Messaging screen, then touch **Settings\Manage SIM card messages**.

4.1.1 Write message




On message list screen, touch **Compose new message** to write text/ multimedia messages.



Touch to create new message

Touch to view the whole message thread

Sending a text message

Enter mobile phone number of the recipient on **To** bar or touch  to add recipients, touch **Type to compose** bar to enter the text of the message. When finished, touch  to send the text message. For dual SIM model, touch  to select the SIM card for sending.

An SMS message of more than 160 characters will be charged as several SMS. A counter will always appear on the top right corner of the text box to remind you how many characters are allowed to be entered in one message.





Specific letters (accent) will increase the size of the SMS, this may cause multiple SMS to be sent to your recipient.

Sending a multimedia message

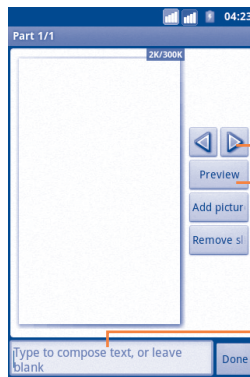
MMS enables you to send video clips, images, photos, animations, slides and sounds to other compatible mobiles and e-mail addresses.

An SMS will be converted to MMS automatically when media files (image, video, audio, slides, etc.) are attached or Subject or email addresses added.

To send a multimedia message, enter the recipient's phone number in the **To** bar, touch **Type to compose** bar to enter the text of the message. Press **Menu** key to open the option menu, touch **Add subject** to insert a subject, and touch **Attach** to attach picture, video, audio or slide. When finished, touch  to send the multimedia message. For dual SIM model, touch  to select the SIM card for sending.

Attach options:

- **Pictures** Access Gallery application to select a picture as attachment.
- **Capture picture** Access Camera to capture a new picture for attaching.
- **Videos** Access Gallery application to select a video as attachment.
- **Capture video** Access Camcorder to record a new video for attaching.
- **Audio** Access to select an audio file as attachment.
- **Record audio** Enter voice message recorder to record a voice message for attaching.
- **Slideshow** Enter Edit slide show screen, touch **Add slide** to create a new slide, and touch currently existing slide to edit it (see following picture). Press **Menu** key to get more actions, like setting the slide duration, adding music, etc.




Touch to go to previous or next slide.



Touch to preview the current slide.

Touch to edit the title of this slide.

4.1.2 Manage messages

When receiving a message, an icon  will appear on status bar as notification. Drag down the status bar to open Notification panel, touch the new message to open and read it. The SIM name on the lower right corner indicates which SIM card received/sent the message. You can also access the Messaging application and touch the message to open.

Messages are displayed in conversational order.

To reply to a message, touch the current message to enter message-composing screen, enter the text, then touch . For dual SIM model, touch  to select the SIM card for sending.

To return to the message list from a text message thread, press **Menu** key and then touch **More/All threads**.

Touch and hold a message in message details screen. The following message options are available for selection:

Forward	Touch to forward the message to another recipient.
Lock/Unlock message	Touch to lock/unlock the message so it can/can't be deleted if you reach maximum number of stored messages.
View message details	Touch to view details of the message.
Delete message	Delete the current message.
Copy message text	Copy the current message content. You can paste it to the enter bar of the new message you are going to compose.
Save message to SIM card	Touch to save the SMS to the SIM card.

4.1.3 Adjust message settings

You can adjust a set of message settings. From Messaging application screen, press **Menu** key and touch **Settings**.

Storage settings

- **Delete old messages** Select to delete old messages when the maximum number of stored messages is reached.
- **Text message limit** Touch to set number of text messages to save.
- **Multimedia message limit** Touch to set number of multimedia messages to save.

Text message (SMS) settings

- **Delivery reports** Select to request a delivery report for each text message you send.
- **Manage SIM card messages** Touch to manage text messages stored on your SIM card.
- **Edit quick text** Touch to add custom quick text.
- **SMS Service center** Touch to view service center number.
- **SMS storage location** Touch to set SMS storage location in Phone or SIM card.

Multimedia message (MMS) settings

- **Delivery reports** Select to activate it, then you can touch **Menu** key from a multimedia message thread, and touch **View report** to check delivery status.
- **Read reports** Select to request a report on whether each recipient has or has not read a multimedia message sent by you.
- **Auto-retrieve** Select to download the full MMS message (including message body and attachment) automatically to your phone. Otherwise, download only the MMS message header.
- **Roaming auto-retrieve** Select to download the full MMS message (including message body and attachment) automatically when roaming. Otherwise, download only the MMS message header to avoid extra charges.
- **Creation mode** Touch to set MMS creation mode when composing message.
- **Size limit** Touch to set maximum message size.
- **Priority** Touch to set MMS priority.

Notification settings

- **Notifications** Select to display message notifications in status bar.
- **Select ringtone** Touch to select a ringtone as a new message notification tone.

Service message setting

- **Enable service message** Select to enable to receive service message.

4.2 Gmail/Email

The first time you set up your phone, you can select to use an existing Gmail or to create a new Email account.



4.2.1 Gmail

As Google's web-based email service, Gmail is configured when you first set up your phone. Gmail on your phone can be automatically synchronized with your Gmail account on the web. Unlike other kinds of email account, each message and its replies in Gmail are grouped in your inbox as a single conversation; all emails are organized by labels but not by folders.

To access Gmail

From Home screen, touch the Application tab to enter the applications list, then touch **Gmail**.

Gmail displays messages and conversations from one single Gmail account at a time, if you own more than one account, you can switch to another by pressing **Menu** key from Inbox screen, touching **Accounts**, then touching the account you want to view.


To create and send emails

- Press **Menu** key from Inbox screen, and touch **Compose**.
- Enter recipient(s)'s email address in **To** field, and if necessary, press **Menu** key and touch **Add Cc/Bcc** to include a copy or a blind copy to the message.
- Enter the subject and content of the message.
- Press **Menu** key, touch **Attach** to send an attachment to the receiver.
- Finally, touch .
- If you do not want to send the mail out right away, you can touch to save copy. To view the draft, press **Menu** key and touch **Go to labels**, then select **Drafts**.

- If you do not want to send or save the mail, you can press **Menu** key and then touch **Discard**.

To add a signature to emails, press **Menu** key from inbox screen, and touch **More|Settings**, then select **Signature**.

To receive and read your emails

When a new email arrives, you will be notified by a ringtone or vibration, and an icon  will appear on Status bar.


Touch and drag down the Status bar to display the Notification panel, touch the new email to view it. Or you can also access the Gmail Inbox label and touch the new mail to read it.



If you want to go back to the Inbox label while reading a new message, you can press **Back** key or press **Menu** key and touch **Go to inbox**.

You can search for an email by sender, by subject, by label, etc.

- from inbox screen, press **Menu** key and then touch **Search**
- enter the keyword you want to search for in the searching box and touch search icon.

To reply or forward emails

When viewing an email, touch  to expand hidden icons that offer further options.

- **Reply/Reply all** Touch to enter text-inputting mode, enter the message you want to reply, then touch  to send this message to one single recipient or all people in a mail loop.
- **Forward** Touch to forward the message to another person. You are required to enter the new recipient's email address and then touch .

Managing Gmails by Label

To conveniently manage conversations and messages, you can organize them using a Label.

To label a conversation when reading a conversation's messages, press **Menu** key and touch **Change Labels** and select the label to assign to the conversation.

To view conversations by label when viewing your inbox or another conversation list, press **Menu** key and touch **Go to labels**. Touch a label to view a list of conversations with that label.

Touch and hold an email to produce the following options:

- **Read** To view the email message.
- **Archive** To archive the email message. To display the archived messages, you can press **Menu** key in inbox screen and touch **View labels**, then **All mail**.
- **Mute** To mute the entire conversation. When muted, new mails related to this conversation will not be displayed in **Inbox**, but archived.
- **Mark read/Mark unread** To mark an email message as read or unread.
- **Delete** To delete the email message.
- **Add star/Remove star** To assign a star or remove the star from the conversation.
- **Report spam** To report the email message/conversation as spam.
- **Change labels** To add or change the label of the email message or conversation.

Gmail settings

To manage Gmail settings, press **Menu** key in Inbox screen and touch **MoreSettings**.

General preferences

- **Message Actions** Select to activate an action.
- **Clear search history** Touch to remove the search history.
- **Clear "Show pictures"** Touch to restore default for all senders.

General settings

- **Signature** To add a signature text to the end of each mail you send.
- **Confirm actions** Select to activate a query when deleting a message or conversation, for double confirmation.
- **Reply all** Mark the check box to reply to all people in a mail loop by default.
- **Auto-advance** Touch to select a screen after deleting or archiving a conversation.
- **Message text size** Touch to select text font.
- **Batch operations** Select to add conversation to a batch for further operation, like archive, delete, change label, etc.
- **Sync inboxes and labels** Select to set synchronization frequency.

Notification settings

- **Email notifications** Select to activate notification when a new email arrives.
- **Labels to notify** Touch to set notification preferences for synced labels.

4.2.2 Email.....



Besides your Gmail account, you can also set-up external POP3 or IMAP email accounts in your phone.

To access this function, touch Application tab from Home screen, then select **Email**.

An email wizard will guide you through the steps to set-up an email account.

- Enter the email address and password of the account you want to set-up.
- Touch **Next**. If the account you entered is not provided by your service provider in the phone, you will be prompted to go to the email account settings screen to enter settings manually. Or you can touch **Manual setup** to directly enter the incoming and outgoing settings for the email account you are setting up.
- Enter the account name and display name in outgoing emails.
- Touch **Done**.
- To add another email account, you can press **Menu** key and touch **Accounts** to access Email account screen. Press **Menu** key and touch **Add account** to create.

To create and send emails

- Press **Menu** key from Inbox screen, and touch **Compose**.
- Enter recipient(s)'s email address in **To** field, and if necessary, press **Menu** key and touch **Add Cc/Bcc** to include a copy or a blind copy to the message.
- Enter the subject and content of the message.
- Press **Menu** key, touch **Add attachment** to send an attachment to the receiver.
- Finally, touch **Send**.
- If you do not want to send the mail right away, you can touch **Save as draft** or press **Back** key to save a copy.

4.3 Google Talk.....



Google's instant messaging service, Google Talk, lets you communicate with your friends whenever they are connected to this service.

To access this feature and sign in, touch Application tab from Home screen, then touch **Talk**. All friends added by using Google Talk from the web or phone will be displayed in your friends list.

Touch your own name at the top of your Friends list to set your online status, post a status message, etc. Touch  to set your online status.

 Available

 Busy

 Away

 Signed out

 Invisible

To sign out, press **Menu** key from Friends list to display options, touch **Sign out**.

4.3.1 Chatting with your friends

To start a chat, touch the name of a friend in your Friends list, then enter your message and finally touch **Send**.

You can invite other friends to join in a group chat by pressing **Menu** key, touching **Add to chat** and then select the friend you want to add.

When chatting with more than one friend, you can switch screens by pressing **Menu** key, then touching **Switch chats**.

To return to Friends list screen, press **Menu** key, then touch **Friends list**.

4.3.2 To add a new friend

From Friends list, press **Menu** key to open options list and touch **Add Friend** to add a new friend. Enter the Google Talk ID or Gmail address of the friend you want to add, and then touch **Send invitation**.

A notification with this invitation will be received by the friend. By touching the invitation, the friend can select **Accept** or **Cancel** in response.

You can also check all invitations you have sent or received by pressing **Menu** key from Friends list and touching **More\Invites**.

4.3.3 To close a chat

When you want to end a chat, the following two ways are available:

- From Friends list screen, touch and hold the friend you want to stop chatting with to open Option menu, touch **End chat**.
- Press **Menu** key from chatting screen directly, and then touch **End chat**.

4.3.4 To manage your friends

Besides adding new friends to your friends list, the following actions are available for your choice:

- **To view all friends/ most popular friends** By default, only friends that you frequently communicate with are displayed in Friends list. To view all friends, press **Menu** key, then touch **All friends**. To return to displaying most popular friends screen, press **Menu** key again, then touch **Most popular**.
- **To make a friend popular** To ensure a friend is always displayed in your Most popular list, touch and hold the friend's name until the options menu pops up, then touch **Always show friend**. To remove a friend from Always show friend, touch and hold the friend, and touch **Auto show friend**.
- **To block a friend** To block a friend from exchanging messages and remove them from your friends list, touch and hold the friend, then touch **Block friend**. All blocked friends can be viewed by pressing **Menu** key and touching **MoreBlocked**. To unblock a friend, touch the name of this friend and touch **OK** when prompted.

4.3.5 Settings

A series of settings are available for your selection by pressing **Menu** key from Friends list screen, and touch **Settings**.

- **Mobile indicator** Select to display an indicator icon along with your name in other people's Friends list.
- **Sign in automatically** Select to sign in to your Google Talk account automatically every time you turn on your phone.
- **Automatic away status** Select to set status as Away when the screen is turned off.
- **Clear search history** Touch to clear previous chat searches history from showing up in the Search box.
- **Invitation notifications** Select to activate the status bar's notification function when receiving friend invitations.
- **Notifications** Select to activate the notification function when a new text chat or invitation to a video/voice chat arrives.
- **Ringtone** Select to set a notification ringtone.
- **Vibrate** Select to activate a vibration alert for this service.

5 Google Calendar & Clock & Calculator & News & Weather.....

5.1 Google Calendar.....



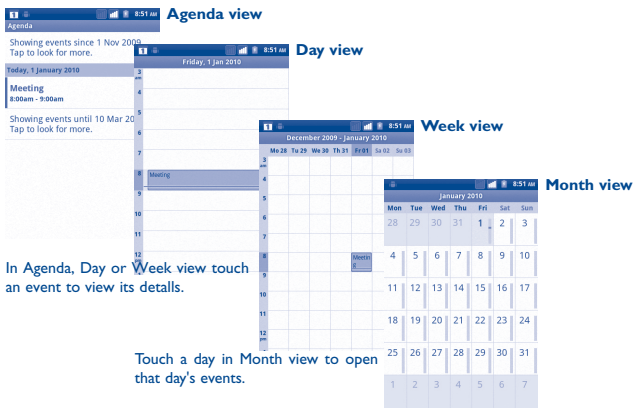
Use Google Calendar to keep track of important meetings, appointments, etc.

To access this function, touch Application tab from Home screen, then touch **Calendar**.

5.1.1 Multimode view

You can display the Calendar in daily, weekly, monthly, or agenda view.

To change your Calendar view, press **Menu** key, then touch **Day**, **Week**, **Month** or **Agenda**.



In Agenda, Day or Week view touch an event to view its details.

Touch a day in Month view to open that day's events.

5.1.2 To create new events

You can add new events from any Calendar view.


- Press **Menu** key from Calendar screen, and touch **More** **New event** to access new event edit screen.
- Fill in all required information for this new event. If it is a whole-day event, you can select **All day**.
- Invite guests to the event. Enter the email addresses of the guests you want to invite with commas to separate. If the guests use Google Calendar, they will receive an invitation from Calendar and email.
- When finished, touch **Done** from the end of the screen.

To quickly create an event from Day, Week or Month view screen, touch and hold an empty spot or an event to open Option menu, then touch **New event** to enter the event details screen of the time you have previously selected.

5.1.3 To delete or edit event

To delete or edit an event, touch the event to enter details screen, press **Menu** key, touch **Edit event**, or **Delete event**.

5.1.4 Event reminder

If a reminder is set for an event, the upcoming event icon  appears on Status bar as a notification when the reminder time arrives.

Touch and drag down the status bar to open notification panel, touch event name to view Calendar notification list.

Touch **Snooze all** to turn off all event reminders for 5 minutes.

Touch **Dismiss all** to delete all reminders from the list.

Press **Back** key to keep the reminders pending in the status bar and notification panel.


Important options by pressing **Menu** key from Calendar main screen:

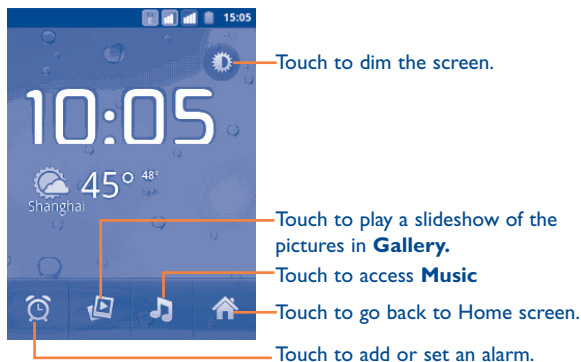
More	New event	To add a new event
	Calendars	Touch to show or hide, sync or not sync the calendars.
	Settings	To set a series of Calendar settings

5.2 Clock.....

Your mobile phone has a built-in clock.

To access this function, touch the Application tab from Home screen, then touch **Clock**.

Touch  icon at the bottom of the screen. Touch **Add alarm** to set the alarm. Touch **Set** to save.



5.2.1 To set an alarm

From Clock screen, touch a currently existing alarm or press **Menu** key and touch **Add alarm** to enter the alarm editing screen.

- **Turn alarm on** Select to enable alarm.
- **Time** Touch to set time.
- **Repeat** Touch to select days you want alarm to sound
- **Ringtone** Touch to select a ringtone for the alarm
- **Vibrate** Select to activate vibration
- **Label** Touch to set a name for the alarm

When finished, touch **Done** to confirm.

5.2.2 To adjust alarm settings

Press **Menu** key from **Alarms** screen, then touch **Settings**. The following options can now be adjusted:

- **Alarm in silent mode** Select to play alarm with sound or vibration even when the phone is in Silent mode
- **Alarm volume** Touch to set volume of alarms
- **Snooze duration** Touch to set temporary turn off time of an alarm
- **Side button behavior** Touch to set side **Volume up/down** key behaviors when alarm sounds: **None**, **Snooze** or **Dismiss**

5.3 Calculator.....

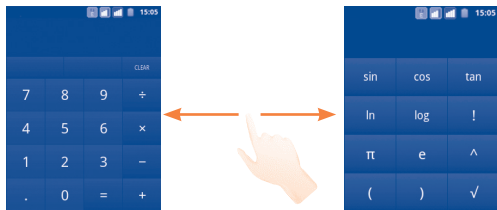
With Calculator, you can solve many mathematical problems.

To access this function, touch Application tab from Home screen, then touch **Calculator**.

There are two panels available: Basic panel and Advanced panel.

To switch between panels, select one of the following two ways:

- Touch and drag the basic screen to the left to open the Advanced panel.
- Or press **Menu** key from basic panel to open option menu and touch **Advanced panel**.



Enter a number and the arithmetic operation to be performed, and enter the second number, then touch “=” to display the result. Touch **CLEAR** to delete digits one by one, touch and hold **CLEAR** to delete all at one time.

When some number or operations have been entered, touch and hold the entering bar to open a menu offering these further operations:

- **Select all** To select all entered text
- **Select words** To select what you want to select from entered text
- **Cut** To delete selected text
- **Copy** To copy selected text
- **Input method** To select your preferred input method
- **Paste** ⁽¹⁾ To paste what you have previously copied to the entering bar

⁽¹⁾ Option will not appear unless copy or cut operation has been made.



5.4 News & Weather.....

Use News & Weather to check the weather and top news stories.

To access this function, touch the Application tab from Home screen, then touch **News & Weather**.

5.4.1 To get details about weather and the news

Touch **Weather** tab to get a one week forecast for the city you set. Touch **i** for a more detailed forecast.

Slide left or right across the screen to view top stories by category. It allows customization showing/hiding various news categories and even creating your own.

To get the latest information while viewing the weather or new headlines, press **Menu** key and touch **Refresh**.

5.4.2 To adjust settings

Press **Menu** key from News & Weather screen, then touch **Settings**. The following options can now be adjusted:

Weather settings

- **Use my location** Check to set location by using the phone's location service.
- **Set location** Touch to set location by entering a city or postal code.
- **Use metric** Check to use metric instead of imperial units.

News settings

- **Select news topics** Check the boxes of news categories which most interest you to include them in the scrolling list of News & Weather tabs. You can also add your own topic by touching **Custom topic**.
- **Prefetch articles** Check to download news articles for faster access.
- **Prefetch images** Check to download news images for faster access.
- **News terms of service** Opens a screen with details about the terms of service for Google News.
- **Mobile privacy policy** Opens a screen with details about Google Mobile privacy policy.

Refresh settings

- **Auto-refresh** Check to update News & Weather information automatically, at the frequency you set with **Refresh interval**.
- **Refresh interval** Touch to set how often news and weather automatically update.
- **Refresh status** Displays the date and time of the last refresh of news and weather.

6 Getting connected.....

To connect to the internet with this phone, you can use GPRS/EDGE/3G networks or Wi-Fi, whichever is most convenient.

6.1 Connecting to the Internet

6.1.1 GPRS/EDGE/3G

The first time you turn on your phone with SIM card inserted, it will automatically configure network service: GPRS, EDGE or 3G.

To check the network connection you are using, press **Menu** key on Home screen, then touch **Settings\Wireless & networks\Mobile networks\Network operators** or **Access Point Names**.

To create a new access point

A new GPRS/EDGE/3G network connection can be added to your phone with the following steps:

- Press **Menu** key from Home screen.
- Touch **Settings\Wireless & networks\Mobile networks\Access Point Names**.
- For dual SIM model, select the SIM name in the screen that opens.
- Then press **Menu** key again and the touch **New APN**.
- Enter the required APN information.
- When finished, press **Menu** key and touch **Save**.

To activate/deactivate Data roaming

When roaming, you can decide to connect/disconnect to a data service.

- Press **Menu** key from Home screen.
- Touch **Settings\SIM management\Roaming\Data roaming**.
- Mark/Unmark the SIM card checkbox to activate or deactivate data roaming.
- When Data roaming is deactivated, you can still perform data exchange with a Wi-Fi connection (refer to section 6.1.2 Wi-Fi).

To limit your data connection to 2G networks only

To save battery and extend battery life, you can set to activate 2G networks (GPRS or EDGE) only.

- Press **Menu** key from Home screen.
- Touch **Settings\Wireless & networks\Mobile networks\Network mode**.
- Touch **2G only** in the dialog that opens.

6.1.2 Wi-Fi

Using Wi-Fi, you can connect to the Internet when your phone is within range of a wireless network. Wi-Fi can be used on phone even without a SIM card inserted.

To turn Wi-Fi on and connect to a wireless network

- Press **Menu** key from Home screen.
- Touch **Settings\Wireless & networks\Wi-Fi**.
- Mark/Unmark the checkbox to turn on/off Wi-Fi.
- Touch **Wi-Fi settings**. The detailed information of detected Wi-Fi networks is displayed in the Wi-Fi networks section.
- Touch a Wi-Fi network to connect. If the network you selected is secured, you are required to enter a password or other credentials (you may contact network operator for details). When finished, touch **Connect**.

To activate notification when a new network is detected

When Wi-Fi is on and network notification is activated, the Wi-Fi icon will appear on the status bar whenever the phone detects an available wireless network within range. The following steps activate the notification function:

- Press **Menu** key from Home screen.
- Touch **Settings\Wireless & networks\Wi-Fi settings\Network notification**.
- Mark/Unmark the checkbox to activate/deactivate this function.

To add a Wi-Fi network

When Wi-Fi is on, you may add new Wi-Fi networks according to your preference.

- Press **Menu** key from Home screen.

- Touch **Settings\Wireless & networks\Wi-Fi settings\Add Wi-Fi network**.

- Enter the name of the network and any required network information.
- Touch **Save**.

When successfully connected, you phone will be connected automatically the next time you are within range of this network.

To forget a Wi-Fi network

The following steps prevent automatic connection to networks which you no longer wish to use.

- Turn on Wi-Fi, if it's not already on.
- In the Wi-Fi settings screen, touch & hold the name of the network.
- Touch **Forget network** in the dialog that opens.

To add a WPS network

WPS (Wi-Fi Protected Setup) is an easy way for users to access Wi-Fi network by entering PIN or using push button.

- Press **Menu** key from Home screen.
- Touch **Settings\Wireless&networks\Wi-Fi settings\WPS connect**.
- Enter PIN number or use push button.
- Touch **Start** to get access to a WPS network.

To enable proxy

When Wi-Fi is on, you may set up a proxy to make indirect network connections to other network services.

- Touch **Settings\Wireless & networks\Wi-Fi settings\Enable proxy**.
- Touch **Proxy settings** to enter host and port.
- Touch **OK**.

6.2 Browser.....



Using Browser, you can enjoy surfing the Web.

To access this function, touch Application tab from Home screen, then touch **Browser**.

To go to a web page

On Browser screen, touch the URL box at the top, enter the address of the web page, then touch . Some web sites scroll the URL box off the top of the screen, but you can slide the page down to bring it into view.

To set home page

- Press **Menu** key from Browser screen to display option menu, touch **More\Settings\Set home page**.
- Enter the URL of the website you want to set as your home page.
- Finally touch **OK** to confirm.

6.2.1 Viewing web pages


When opening a website, you can navigate on web pages by sliding your finger on the screen in any direction to locate the information you want to view.

To zoom in/out of a web page

Zoom controls will be activated when scrolling the screen using your finger. Touch the plus or minus to the side of the Zoom control to zoom in or out.

To quickly zoom into a section of a web page, double-tap on the section you want to view. To return to normal zoom level, double-tap again. You can also pinch current web pages.

To find text on a web page

- Press **Menu** key from web page screen, then touch **More\Find on page**.
- Enter the text or phrase you want to find.
- The first word with matching characters will be highlighted on the screen, and subsequent matches are boxed.
- Touch the left or right arrow to switch to the previous or next matching items.
- When finished, you can touch  to close the search bar.

To copy text on a web page

You can copy text from a web page and paste it into emails or SMS/MMS messages.

- Press **Menu** key from web page screen, then touch **More\Select text**.
- Place your finger at the start of the text you want to copy and then drag it to the end of the text.
- Raise your finger. Selected text is highlighted in color. Touch the selected text to copy.

To paste the copied text into an email or SMS/MMS message, touch and hold the enter box and then touch **Paste** on the options menu.

To open new window/switch between windows

Multiple windows can be opened at the same time for your convenience.

- To view all currently open windows, press **Menu** key then touch **Windows**.
- Touch **New window** to open a new window.
- Touch a window you want to view.

To close a window, touch  on the window you want to close.

Other options:

- **Close** To close all tabs or minimize the web page. (press **Menu** key on web page screen, then touch **Close**).
- **Page info** To view more information about the current page (press **Menu** key on web page screen, then touch **More\Page info**).
- **Forward** To forward the pages you have opened (press **Menu** key on web page screen, then touch **More\Forward**).
- **Backward** To review the pages you have opened (press **Menu** key on web page screen, then touch **Backward**).
- **Share page** To share the current page with your friends via various ways, like Message, Email, Bluetooth, etc. (press **Menu** key on web page screen, then touch **More\Share page**).

6.2.2 Manage links, history

To manage a link, phone number or address displayed on a web page

- **Link** Touch the link to open the web page.
Touch and hold the link to open options for further operation, like open in new window, save link, share link, copy link, etc.
- **Phone number** Touch to call the phone number.
- **Address** Touch to open Google Maps and locate the address

To view Browser history

- Press **Menu** key from Browser screen
- Touch **More\History** tab to view browser history.

To view your most frequently visited pages

- Press **Menu** key from Browser screen
- Touch **More\History**
- Touch **Most visited** tab to view your most frequently visited pages.

6.2.3 Manage downloads

To access Downloads

Downloads gives you easy access to any file downloaded from the browser, email or another application, and you can manage and store your download more conveniently.

Enter this menu by either:

- Touching the **Application** tab from Home screen and selecting **Downloads**.

Or:

- Touching the **Application** tab from Home screen and selecting **Browser**. Then press **Menu** key and touch **More\Downloads**.

To download a web application/view your downloads

Before downloading a web application, you need to enable your phone to download web applications (press **Menu** key from Home screen, touch **Settings****Applications**, mark check box of **Unknown sources**, finally touch **OK** to confirm).

To download a file, touch and hold the item you want to download, then touch **Save** on the menu that opens.

To cancel a download, press **Menu** key and touch **More****Downloads**, then touch **Menu** key again and finally touch **Cancel all downloads**.

To view items you have downloaded, press **Menu** key and touch **More****Downloads**. You can clear the downloaded item list by pressing **Menu** key and touching **Clear list**.

6.2.4 Manage bookmarks

To bookmark a web page

- Open the web page you want to bookmark.
- Press **Menu** key and touch **Bookmarks**.
- Touch **Add bookmark**
- Enter the name and location if needed and touch **OK** to confirm.

To open a bookmark

- Press **Menu** key and touch **Bookmarks**.
- On the **Bookmarks** tab, touch the bookmark you want to open.
- You can also touch and hold to display the options screen, then touch **Open** or **Open in new window**.

To edit a bookmark

- Press **Menu** key and touch **Bookmarks**.
- On the **Bookmarks** tab, touch and hold the bookmark you want to edit.
- Touch **Edit bookmark**.
- Enter your changes.
- When finished, touch **OK** to confirm.

Touch and hold a bookmark in the bookmark list to view these additional options:

- **Share link** To share the bookmark.
- **Copy link URL** To copy the bookmark link.
- **Add shortcut to Home** To add a bookmark shortcut to the Home screen.
- **Delete bookmark** To delete a bookmark.

6.2.5 Settings

A series of settings are available for your adjustment. To access Browser settings, press **Menu** key from Browser screen, and touch **More\ Settings**.

Page content settings

- **Text size** Touch to select the size of the text display: Tiny, Small, Normal, Large, or Huge.
- **Default zoom** Touch to select the magnification level by default.
- **Open pages in overview** Mark the checkbox to open web pages zoomed out, in an overview.
- **Text encoding** Touch to select the character-encoding standard.
- **Block pop-up windows** Mark the checkbox to prevent pop-up windows.
- **Load images** Mark to display images on web pages.
- **Auto-fit pages** Mark to format web pages to fit the screen.
- **Landscape – only display** Mark to display pages only in landscape screen orientation.
- **Enable JavaScript** Mark to enable JavaScript.
- **Enable plug-ins** Mark to enable plug-ins.
- **Open in background** Mark to open new windows behind the current one.
- **Set home page** Touch to set home page.

Privacy settings

- **Clear cache** Touch to clear locally cached content and databases.
- **Clear history** Touch to clear the browser history.
- **Accept cookies** Mark to allow sites to save and read cookie data.
- **Clear all cookie data** Touch to clear all browser cookies.
- **Remember form data** Mark to remember data in forms for later use.
- **Clear form data** Touch to clear all the saved form data.
- **Enable location** Mark to allow sites to request access to your location.
- **Clear location access** Touch to clear location access for all websites.

Security settings

- **Remember passwords** Mark to remember username and passwords for websites.
- **Clear passwords** Touch to clear all saved passwords.
- **Show security warnings** Mark to show warning if there is a problem with a site's security.

Advanced settings

- **Set search engine** Touch to select a web search engine, which will be used when you enter search terms in the URL box.
- **Website settings** Touch to view advanced settings for individual websites.
- **Reset to default** Touch to clear all browser data and reset all settings to default.

6.3 Connecting to Bluetooth devices ⁽¹⁾

Bluetooth is a short-range wireless communications technology that you can use to exchange data, or connect to other Bluetooth devices for various uses.

To access this feature, press **Menu** key from Home screen, touch **Settings\Wireless & Networks\Bluetooth** or **Bluetooth settings**.

To turn on Bluetooth

- Press **Menu** key from Home screen.
- Touch **Settings\Wireless & networks\Bluetooth** or **Bluetooth settings**.
- Mark/Unmark the checkbox to activate/deactivate this function.

⁽¹⁾ You are recommended to use Alcatel Bluetooth headsets, which have been tested and proved compatible with phone. You can go to www.alcatelonetouch.com for more information about Alcatel Bluetooth headset.

To change device name

To make your phone more recognizable, you can change your phone name which is visible to others.

- Press **Menu** key from Home screen.
- Touch **Settings\Wireless & networks\Bluetooth settings\Device name**.
- Enter a name, and touch **OK**.

To make device visible

- Press **Menu** key from Home screen.
- Touch **Settings\Wireless & networks\Bluetooth settings\Discoverable**.
- Mark/Unmark the checkbox to activate/deactivate this function.

To pair/connect your phone with a Bluetooth device

To exchange data with another device, you need to turn Bluetooth on and pair your phone with the Bluetooth device with which you want to exchange data.

- Press **Menu** key from Home screen.
- Touch **Settings\Wireless & networks\Bluetooth settings**
- Touch **Scan for devices**
- Select a Bluetooth device you want to be paired with in the list.
- Read Bluetooth pairing request, and then touch **Pair**.
- If the pairing is successful, your phone connects to the device.

To disconnect/unpair from a Bluetooth device

- Touch & hold the device name in the Bluetooth settings screen.
- Touch **Unpair** or **Disconnect & Unpair** in the menu that opens.

6.4 Connecting to a computer via USB

With the USB cable, you can transfer media files and other files between your phone's microSD card and the computer.

To connect/disconnect your phone to/from the computer

To connect your phone to the computer:

- Use the USB cable that came with your phone to connect the phone to a USB port on your computer. You will receive a notification that the USB is connected.
- Open the Notifications panel and touch **USB connected**.
- Touch **Turn on USB storage** in the dialog that opens to confirm that you want to transfer files.

To disconnect:

- Unmount the microSD card on your computer.
- Open the Notifications panel and touch **Turn off USB storage**.
- Touch **Turn off USB storage** in the dialog that opens.

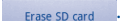
To safely remove the microSD card from your phone

The microSD card can be removed from your phone any time the phone is powered off.

- Press **Menu** key from Home screen.
- Touch **Settings\SD card & phone storage**.
- Touch **Unmount SD card**.

You can now safely remove the microSD card from the phone.

To format a microSD card

- Press **Menu** key from Home screen.
- Touch **Settings\SD card & phone storage**.
- Touch **Unmount SD card**. You can format a microSD card only when it is unmounted.
- Touch **Erase SD card**. On the screen that warns you that formatting the microSD card will erase its contents, touch 

6.5 Sharing your phone's mobile data connection

You can share your phone's mobile data connection with a single computer via a USB cable (USB tethering) or with up to eight devices at once by turning your phone into a portable Wi-Fi hotspot.



The functions below may incur additional network charges from your network operator. Extra fees may also be charged in roaming areas.

To share your phone's data connection via USB

Use the USB cable that along with your phone to connect the phone to a USB port on your computer.

- Press **Menu** key from Home screen.
- Touch **Settings\Wireless & networks\Tethering & portable hotspot**.
- Mark/unmark the check box of **USB tethering** to activate/deactivate this function.

To share your phone's data connection as a portable Wi-Fi hotspot

- Press **Menu** key from Home screen.
- Touch **Settings\Wireless & networks\Tethering & portable hotspot**.
- Mark/unmark the check box of **Portable Wi-Fi hotspot** to activate/deactivate this function.

To rename or secure your portable hotspot

When Portable Wi-Fi hotspot is activated, you could change the name of your phone's Wi-Fi network (SSID) and secure its Wi-Fi network.

- Press **Menu** key from Home screen.
- Touch **Settings\Wireless & networks\Tethering & portable hotspot\Portable Wi-Fi hotspot settings**.
- Touch **Configure Wi-Fi hotspot** to change the network SSID or set your network security.
- Touch **Save**.

6.6 Connecting to virtual private networks

Virtual private networks (VPNs) allow you to connect to the resources inside a secured local network, from outside that network. VPNs are commonly deployed by corporations, schools, and other institutions so that their users can access local network resources when not on campus, or when connected to a wireless network.

To add a VPN

- Press **Menu** key from Home screen.
- Touch **Settings\Wireless & networks\VPN settings\Add VPN**.
- Touch the type of VPN to add.
- In the screen that opens, follow the instructions from your network administrator to configure each component of the VPN settings.
- Press **Menu** key and touch **Save**.

The VPN is added to the list on the VPN settings screen.

To connect/disconnect to a VPN

To connect to a VPN:

- Press **Menu** key from Home screen.
- Touch **Settings\Wireless & networks\VPN settings**.
- VPNs you have added are listed; touch the VPN you want to connect with.
- In the dialog that opens, enter any requested credentials and touch **Connect**.

To disconnect:

- Open the Notifications panel and touch the resulting notification for the VPN connection.

To edit/delete a VPN

To edit a VPN:

- Press **Menu** key from Home screen.
- Touch **Settings\Wireless & networks\VPN settings**.
- VPNs you have added are listed; touch & hold the VPN you want to edit.
- Touch **Edit network**.
- After finishing, press **Menu** key and touch **Save**.

To delete:

- Touch and hold the VPN you want to delete, in the dialog that opens, touch **Delete network**.
- Touch **OK** to confirm.

6.7 Configuring Internet (SIP) calling

You can place/receive voice calls via the Internet when connected to a Wi-Fi network, rather than via your mobile network. You should configure a valid internet account before using this feature. Refer to section 3.1.1 Placing a call to learn more about placing an internet call.

To add an internet calling account

- Press **Menu** key from Home screen.
- Touch **Settings\Call settings\Internet call\Use Internet calling**.
- Mark the checkbox to enable Internet calling.
- Touch **Accounts**, then touch **Add account** tab.
- In the screen that opens, follow the instructions from your internet calling service provider to configure the settings for your account.
- When finished, press **Menu** key and touch **Save**.

To edit/remove an internet calling account

To edit:

- Press **Menu** key from Home screen.
- Touch **Settings\Call settings\Internet call\Accounts**.
- Accounts you have added are listed; touch the account you want to edit.
- Edit your chosen settings. When finished, press **Menu** key and touch **Save**.

To remove:

- Touch the account you want to remove.
- Touch **Remove account** in the screen that opens.

To configure your phone to receive Internet calls

Receiving Internet incoming calls is off by default to reduce power consumption.

- Press **Menu** key from Home screen.
- Touch **Settings\Call settings\Internet call\Accounts\Receive incoming calls**.
- Mark/Unmark the checkbox to activate/deactivate this function.

7 Android Market ⁽¹⁾



Android Market is an online software store, where you can download and install applications and games to your Android Powered Phone.

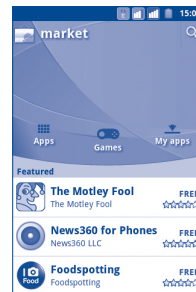
To open Android Market:

- Touch Application tab from Home screen, and then touch **Market**.
- For the first time you access Android Market, a screen with terms of service pops up for your attention, touch **Accept** to continue.

Press **Menu** key, then touch **Help** to enter Android Market help page for more information on this function.

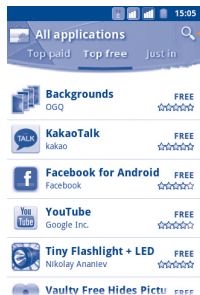
7.1 Locate the item you want to download and install

Android Market home page provides several ways to find applications. It showcases applications and games in categorized listings, and a link to all your downloads.



⁽¹⁾ Depending on your country and operator.

Touch **Apps** or **Games** on Android Market screen to browse its contents, and then select subcategory. Within each subcategory you can select to view items sorted by **Top paid**, **Top free**, or **Just in**.



Touch to search in Android market.

To return to Android Market Home screen, do one of the following:

- Touch the Market icon  to the top left of the screen.
- Press **Menu** key to display options list, then touch **Home**.


7.2 Download and install

To download & install:

- Navigate to the item you want to download, and select to enter the details screen from which you can read its overall rating or comments, view developer's information, etc.
- Press **Menu** key and touch **Security** to preview the functions and data the application can access on your phone if you install it.
- Touch **Free**.



Be especially cautious with applications that have access to many functions or to a significant amount of your data. Once you touch **OK** to continue, you are responsible for the results of using this item on your phone.

- To check the progress of the download, open the Notification panel. To stop the downloading of the item, touch the progress bar and **Cancel** on the screen that opens.
- After download and installation have finished, you will see a notification icon  on the status bar.

To open the application you have downloaded:

- On Android Market screen, touch **My apps**.
- Touch the installed application in the list, then touch **Open**.

To buy an application

On Android Market, some applications are labeled as free, while some of them are to be paid for before downloading and installing.

- Touch the application you want to buy.
- Touch the price below **Install**.
- When making your first purchase, you are prompted to log in to Google Checkout payment and billing service.
- If your Google Checkout account has multiple credit card accounts, select one to proceed.
- Select the Terms of service link and read the document. When finished, press **Back** key.
- Mark the check box if you agree with the terms of service.
- Touch **Buy now** at the bottom of the screen.

When finished, Android downloads the application.

To request a refund

If you are not satisfied with the application, you can ask for a refund within 24 hours of the purchase. Your credit card will not be charged and the application will be removed. If you change your mind, you can install the application again, but you will not be able to request a refund.

- Touch **My apps** in Android Market Home.
- Touch the application that you want to uninstall.
- Touch **OK** in the **Refund** dialog box. If the dialog box does not appear, your trial period has expired.
- In the survey form, select the answer that best matches your reason, and touch **OK**.

7.3 Manage your downloads

After you downloaded and installed an application, the following further operations are available for your selection.

View

On Android Market screen, press **Menu** key and touch **My apps**.

Uninstall

On Android Market screen, press **Menu** key and touch **My apps**. Touch the application you want to uninstall to enter the details screen, touch **Uninstall**, and finally touch **OK** to confirm.


Refund

On Android Market screen, press **Menu** key and touch **My apps**. Touch the application you want to uninstall for a refund, touch **Refund** and finally touch **OK** to confirm.

Update notification

On Android Market screen, press **Menu** key and touch **Settings**. Touch the **Notifications** menu to select whether or not to be notified of updates,.

Rate

Open the details screen for an application, touch the stars  under **My review**, touch the number of stars to award and confirm by touching **OK**.

Flag

You can report an inappropriate application to Android Market by flagging it. Open the details screen for the application, scroll to the bottom and touch **Flag as inappropriate**, enter the reason and finally touch **Submit**.

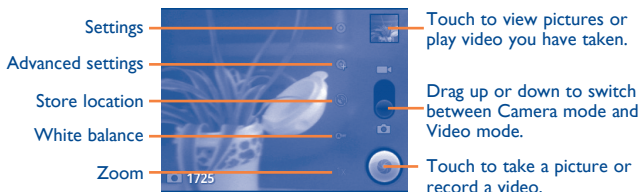
8 Multimedia applications

8.1 Camera


Your mobile phone is fitted with a Camera and Camcorder for taking photos and shooting videos.

Before using Camera or Camcorder, please ensure that a microSD card where all pictures and videos are stored is correctly installed. Also, be sure to open the protective lens cover before use to avoid it affecting your picture quality.

To access this function, touch Application tab from Home screen and then touch **Camera**.





To take a picture

The screen acts as the viewfinder. First position the object or landscape in the viewfinder, and touch  icon to take the picture, which will be automatically saved.

Zoom in/zoom out

Touch  icon to open the Zoom control and slide the scroll bar to zoom in or out gradually. Touch the screen twice to zoom all the way in or out.

To shoot a video

Switch Camera mode to Video mode or access Camcorder directly from the applications list. First position the object or landscape in the viewfinder, and touch  icon to start recording. Touch  icon to stop shooting. The video will be automatically saved.

8.1.1 Settings in framing mode

Before taking a photo/shooting a video, you can adjust a number of settings in framing mode.

Camera settings:

- **Settings** Touch to enter a scrolling list of settings: EV, Scene mode, Color effect, etc.
- **Advanced settings** **Capture mode** Touch to set the capture mode to Normal, Smile Shot or Panorama.
- **Face detection** Touch to turn on/off face detection, this detects faces and automatically adjusts the focus.

There are several other options to choose from such as Burst shot, Antiflicker, etc.

- **Store location** Touch to turn on/off stored location information of pictures by using the phone's GPS.
- **White balance** Touch to adjust color in different lights: Auto, Incandescent, Daylight, Fluorescent, Cloudy, etc.
- **Zoom** Touch to open the Zoom control and slide the scroll bar to zoom in or out gradually.

Video/Camcorder settings:

- **Settings** Touch to enter a scrolling list of settings: EV, Scene mode, Color effect, etc.
- **Advanced settings**
 - Microphone** Touch to turn on/off the microphone when shooting a video.
 - Anti-flicker** Touch to set frequency (50Hz or 60Hz).
- **White balance** Touch to adjust color in different lights: Auto, Incandescent, Daylight, Fluorescent, Cloudy, etc.
- **Zoom** Touch to open the Zoom control and slide the scroll bar to zoom in or out gradually.

Press **Menu** key in framing mode, the following options are available:

- Gallery** Touch to access **Gallery**.
- Switch to camera/video** Touch to switch between camera and video.
- Switch Camera** Touch to switch between front camera ⁽¹⁾ and back camera.

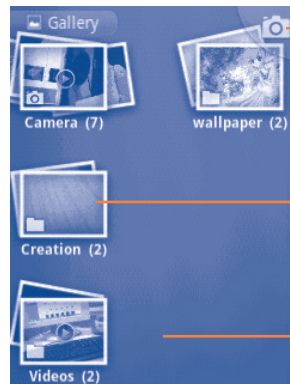
⁽¹⁾ Depending on your model.

8.2 Gallery

Gallery acts as a media player for you to view photos and playback videos.

To access this function, touch Application tab from Home screen, then touch **Gallery**.

From this menu, you can access Camera for taking a picture or video.



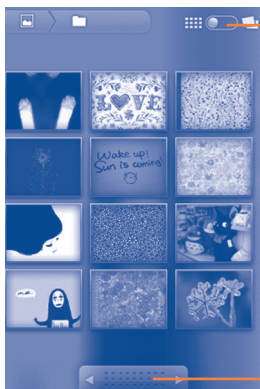
Touch to open camera.

Pinch the album and spread it apart.

Slide left or right to view more albums.

To view a picture/play a video

Pictures and videos are displayed by albums in **Gallery**.



Touch and scroll the bar to switch. This will change the album view from grid to stack.

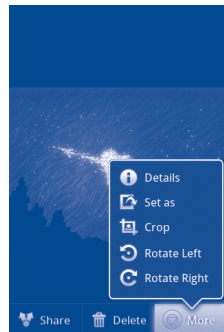
Drag left or right to scroll through the album quickly.

- Touch the picture/video directly to view or play it.
- You can also view previous or next pictures/videos by sliding left or right.

Working with pictures

You can work with pictures by rotating or cropping them, sharing them with friends, setting them as contact ID or wallpaper, etc.

Locate the picture you want to work on, press **Menu** key from full-screen picture view.



To crop a picture, touch a picture to view controls, press **Menu** key and touch **More\Crop**. The cropping square appears in the middle of the picture. Select the portion to crop, touch **Save**.

Batch operation

Gallery provides multi-select function, so that you can work with pictures/videos in batches.

Open the main Gallery window, press **Menu** twice, and mark the checkbox before the file you want to work on, then perform further actions, like delete, share, etc.

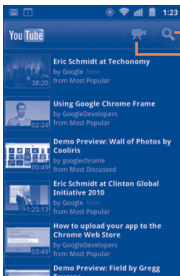
8.3 YouTube

YouTube is an online video-sharing service where the user can download, share and view videos. It supports a streaming function that allows you to start watching videos almost as soon as they begin downloading from the Internet.

To access this function, touch Application tab from Home screen, then touch **YouTube**.



As an online video service, your phone must have a network connection to access YouTube.



Touch to search for a video.

Touch to shoot a video.

By pressing **Menu** key from YouTube screen, you can rate, share, label as favourite, etc. For details about these features, please visit the YouTube website: www.YouTube.com

8.3.1 Watch videos

Touch a video to play it.

Touch video playing screen to display playback controls with which you can pause, skip forward or backward, or drag the progress bar to the point you want to watch.

To exit video playing screen, press **Back** key to return to video list.

8.4 Music

Using this menu, you can play music files stored on the microSD card in your phone. Music files can be downloaded from computer to microSD card using a USB cable.

To access this function, touch Application tab from Home screen, then touch **Music**.

You will find four libraries in which all songs are classified: **Artists**, **Albums**, **Songs**, and **Playlists**. Touch a category and view the list.

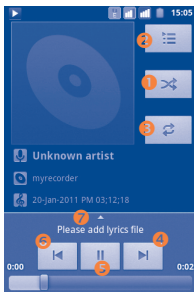
With the help of **Search** key, you can easily search for songs you want to play in libraries.

To delete a song, press **Menu** key from playback screen and then touch **Delete** to remove it from the microSD card.

You can also set a song as a ringtone, press **Menu** key from playback screen to display option menu, then touch **Use as ringtone**.

8.4.1 Playing music

From any of the four library screens, touch a song to play it back.



- 1 Touch to play the current playlist in shuffle mode (tracks are played in random order).
 - 2 Touch to open the current playlist.
 - 3 Touch to toggle repeat mode: Don't repeat, Repeat the playlist, or Repeat the current track.
 - 4 Touch to skip to the next track in the album, playlist, or shuffle.
 - 5 Touch to pause/resume playback.
 - 6 Touch to skip to the previous track in the album, playlist, or shuffle.
- 7 Touch to view lyrics

Adjust volume

To adjust the volume, you can press **Volume up** and **Volume down** key.

8.4.2 Using Party shuffle

All songs will be displayed in order by default. When Party shuffle is activated, some songs will be selected and played at random. Press **Menu** key, then touch **Party shuffle** to turn on this function. To turn it off, press **Menu** key again, then touch **Party shuffle off**.

8.4.3 Using Sound effects

When Sound effects is activated, songs will be played using various different filters preset by you. Press **Menu** key, then touch **Sound effects** to enter settings screen. Mark **Enable sound effects** to turn on this function. Touch sound effect name to set, and mark it to activate.

8.4.4 Working with playlists

Playlists allow you to conveniently organize all the songs stored in the card.

You can create a new playlist, add a song to the list, rearrange the order of the list, and delete or rename a playlist.

To create a playlist

Press **Menu** key from playback screen to display the option menu, touch **Add to playlist**, then touch **New**, enter the name and finally touch **Save**.

To change the order of songs in a playlist

Enter a playlist, drag a song up or down to change the order within the playlist.

To delete a song or a playlist

Locate the song or playlist you want to delete, touch and hold or press **Menu** key from playback screen to display option menu, then touch **Delete**.

To rename a playlist

Locate the playlist you want to rename, touch and hold to display option menu, then touch **Rename**. When finished, touch **Save**.

9 Google Maps.....

9.1 Get My Location

9.1.1 Choose a data source to decide My Location

Press **Menu** key from Home screen, touch **Settings**Location.

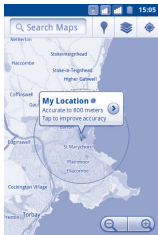
- Mark the check box of **Use wireless networks** to set Wi-Fi and/or mobile networks as My Location data source.
- Or mark the check box of **Use GPS satellites** to set GPS as My Location data source. You can also mark **GPS EPO** assistance or **A-GPS** to speed up the GPS location fix time.

9.1.2 Open Google Maps and view My Location


Touch Application tab from Home screen, then touch **Maps**.

Touch  in search bar to identify your location.

The map will then center on a blue arrow with a blue circle around. Your actual position is within the blue circle.



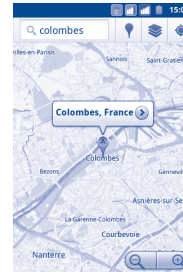
To move the map, drag the map with your finger.

To zoom in and out of a map, touch the plus or minus side of the zoom control , or you can also zoom in/out by double-tapping a location on screen.

To clear the map history, press **Menu** key and touch **Clear Map**.

9.2 Search for a location

- While viewing a map, press **Menu** key and touch **Search**, or you can directly press **Search** key on keyboard to activate search function.
- In the search box, enter an address, a city or a local business.
- Touch the search icon and in a while your search results will appear on the map highlighted by markers with letter labels.



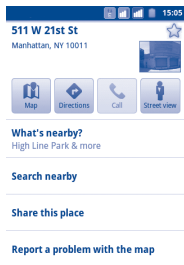
You can touch a marker to open a balloon that contains a label. Touch the balloon to open a screen with more handy information about the location.

9.3 Star a location

Just like bookmarking a web address on the Internet, you can star any position on the map for later use.

9.3.1 How to star (or unstar) a location

- Touch & hold a location on a map
- Touch the address rectangle that opens
- Touch the gray star at the top of the screen to star the location. (Or touch a gold star to unstar that location.)



9.3.2 View a list of starred items

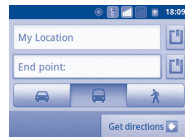
- Press **Menu** key from maps screen and touch **My Places**.
- The list of your starred items and their addresses opens.
- Touch a location in the list to view it .


Press **Menu** key and touch **Refresh** to update the list.

9.4 Get driving, public transport or walking directions

9.4.1 Get suggested routes for your trip

- Press **Menu** key from maps screen and touch **Directions**.




- Touch enter bar or  to edit your start point by one of the following methods: entering an address, using My Location, selecting a start point on a map, selecting a starred item, selecting an address from your contacts or using search history.
- Do likewise for your end point.
- To reverse directions, press **Menu** key and touch **Reverse Start & End**.
- Then select a transport mode: driving by car, using public transport, or walking directions.
- Finally touch **Get directions**.
- A couple of suggested routes will appear in a list. Touch any routes to view their respective detailed directions.

To get reverse directions for a route you've already made, simply open that route's directions window and select **Reverse**. No need to enter your start point and end point again.

9.4.2 Preview suggested routes and decide on a route more preferable or feasible to you

You can preview each turn in your route in Navigation, Satellite, and other views.

- Touch a left or right arrow to preview the next or previous leg of your route.
- You can view turn-by-turn directions in a list by touching , press **Back** key to return to previous view.

When selecting a more preferable or feasible route, distance and time will be the two most important factors for your evaluation. Distance and estimated time will be displayed at the top of the directions screen.

9.4.3 Search for locations along your route

Please refer to section 9.2 for detailed information.

9.4.4 View route progress and calculate estimated arrival time

To view your route progress, pinpoint My Location, zoom out until the whole route goes into one screen, with both finished and unfinished miles in sight.

Start another Directions screen based on your current and intended destination locations. Estimated arrival time will be shown in the results. Please note that the estimated arrival time is not available for the public transport mode.

9.4.5 View traffic conditions on your route

At the lower-left corner of navigation view, a traffic light indicates the overall traffic conditions on your route, next to the estimated time of arrival at your destination. You can also view the traffic conditions on each segment of your route.

Touch the traffic light at the lower left of the Navigation View. Your route opens in Traffic View, with color coding to indicate the traffic along the way. Touch the navigation icon to return to your current location in Navigation View

9.4.6 Get an alternative route to your destination

If traffic is slow on your current route, or if you just want to try a different route, you can request an alternative route from Google Maps with turn-by-turn Navigation service.

Press **Menu** key and touch **Route information**. Touch the alternative route icon. An alternative route is drawn on the map.

9.5 Arrangement of Layers

Layers allow you to view locations and additional information overlaid on the map. You can add multiple layers or remove only certain layers so you control exactly what information you want visible on the map at one time.

9.5.1 To view multiple layers

- Touch  in the search bar
- All available layers are listed (like Traffic, Satellite, Latitude, etc), select one to view.

9.5.2 To open Street View for a location

- Touch and hold a location to display a balloon with the address and a Street View thumbnail.
- Touch the balloon and touch **Street view**.

9.5.3 To clear the map

After you get directions or search on a map, you can clear the markers/layers that have been drawn: press **Menu** key on maps screen and touch **Clear Map**.

9.6 Join Latitude to see your friends' locations and share yours with them

With Google Latitude, you can:

- see your friends' locations on a map or in a list.
- quickly contact your friends with a text message, instant message, or phone call.
- you can share, set, hide your location, or sign out of Google Latitude.
- control who sees your location, and at what level of detail.
- add Latitude widget to home screen to see nearby friends at a glance.

9.6.1 To join Latitude

- Press **Menu** key from maps screen.
- Touch **Join Latitude**.

When you joined Latitude, the menu item changes to **Latitude**.

To open Latitude, press **Menu** key from maps screen, then touch **Latitude**.

9.6.2 How to invite friends to share their locations

- Press **Menu** key from Latitude screen, touch **Add friends**.
- Touch **Select from Contacts** or **Add via email address**.
- After selecting your chosen contacts touch **Add friends** at the bottom of the screen.

When finished, an invitation will be sent to the friends you have invited.

To respond to an invitation, you can select one of the following:

- **Accept and share back** You and your friend can share locations with each other.
- **Accept, but hide my location** You can view your friend's location, but they can not view yours.
- **Don't accept** No locations can be shared between you and your friend.

9.6.3 To view your friends' location

You can view your friends' locations on a map or in a list.

- **Map view** When Google Maps is opened, your friends' locations will display with their photo icon for identification.
- **List view** Press **Menu** key from maps screen, then touch **Latitude**. Your friends are displayed in a list.

9.6.4 To connect with your friends

Select a contact, you can communicate with your friend and set privacy options.

- **Show on map** Locate the friend's position on the map.
- **Chat using Google Talk** Send instant message to the friend.
- **Send email** Send email to the friend.
- **Directions** Get directions to this friend's location.
- **Hide from this friend** Set to hide your location from this friend.
- **Share only city level location** Set to share only locations at city level, but not street level, etc.
- **Remove** Remove this friend from your list and stop sharing information with him or her.

9.6.5 To control what you share

You can control the information you want to share with your friends.

Press **Menu** key from maps screen, touch **Latitude**, touch your own name and then touch **Edit privacy settings**.

The following options are available to choose from:

- **Detect your location** Enable Latitude to detect your location automatically when you move around.
- **Set your location** Select a location on the map manually.
- **Do not update your location** Hide your location from all friends.
- **Enable location history** Location history won't be shared with others.
- **Sign out of Latitude** Deactivate Latitude and stop sharing.

10 Others.....

10.1 File Manager.....



To access this function, touch Application tab from Home screen, then touch **File Manager**.

File Manager works with your SD card instead of your phone memory. To use it, you have to install your SD card first. See page 15 for instructions on inserting the SD card.

File Manager displays all data stored on the microSD card, including applications, media files downloaded from Android Market, YouTube or other locations; video, pictures or audios you have captured; other data transferred via Bluetooth, USB cable, etc.

When you download an application from PC to microSD card, you can locate the application on File Manager, then touch it to install it in your phone.

File Manager allows you to perform and be really efficient with the following common operations: create (sub) folder, open folder/file, view, rename, copy, delete, play, share, etc.

10.2 Sound Recorder.....



To access this function, touch Application tab from Home screen, then touch **Sound Recorder**.


Sound Recorder allows you to record voice/sound for seconds/hours.

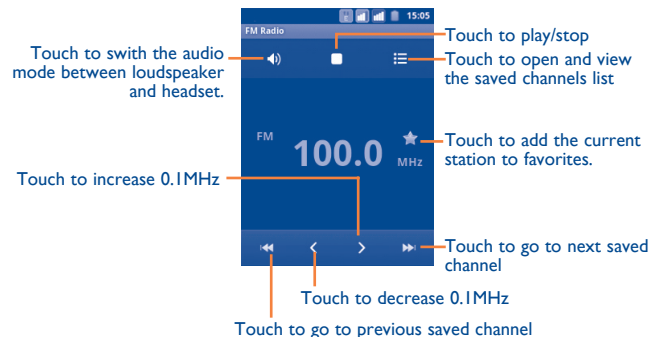
10.3 FM Radio.....



Your phone is equipped with a radio ⁽¹⁾ with RDS ⁽²⁾ functionality. You can use the application as a traditional radio with saved channels or with parallel visual information related to the radio program on the display if you tune to stations that offer Visual Radio service.

To access this function, touch Application tab from Home screen, then touch **FM Radio**.

 To use it, you must plug in your headset, which works as an antenna connected with your phone.



⁽¹⁾ The quality of the radio depends on the coverage of the radio station in that particular area.

⁽²⁾ Depending on your network operator and market.

Available options:

- **Exit** Turn off the radio.
- **Search** Touch to search for all available stations automatically.
- **RDS settings** ⁽¹⁾ Mark the check box the enable the function

10.4 Battery Saver



To access this function, touch Application tab from Home screen, then touch **Battery Saver**.

Battery Saver includes an accurate overview of battery usage and provides an efficient way of power saving by utilizing a range of battery settings and by killing non-essential tasks.

10.5 Setup Wizard



To access this function, touch Application tab from Home screen, then touch **Setup Wizard**.

Setup Wizard helps set up your phone in multiple ways: language, input method, mobile data connection, account setup and synchronization, system update, etc. This will also be performed the first time you power on your phone.

⁽¹⁾ Depending on your network operator and market.

10.6 Traffic Manager



To access this function, touch Application tab from Home screen, then touch **Traffic Manager**.

Traffic Manager helps check the data you have used, including general calls and messages as well as applications, which will avoid extra fees from your network operator.

10.7 Alcatel Help



To access this function, touch Application tab from Home screen, then touch **Alcatel Help**.

Alcatel Help provides help when you have questions or need assistance when using the phone.

10.8 Other applications ⁽¹⁾

The previous applications in this section are preinstalled to your phone. To read a brief introduction of the preinstalled 3rd party applications, please refer to the leaflet provided with the phone. You can also download thousands more 3rd party applications by going to Android Market on your phone.

⁽¹⁾ Application availability depends on country and operator.

Settings.....

To access this function, touch **Application** tab from Home screen, and touch **Settings** on applications list, or you can also press **Menu** key from Home screen and touch **Settings**.

11.1 SIM management

11.1.1 SIM information

Mark the check box of the SIM card to enable this setting. Touch the SIM name on the left to edit details.

- Edit SIM name** Touch to enter a SIM name.
- Enter phone number** Touch to set the phone number.
- Set background color** Touch to set background color for the SIM card.
- Display numbers** Touch to select the way numbers display.

11.1.2 Default SIM

Touch to set your preferred default SIM.

Voice call

Set default SIM for placing a voice call.

Video call ⁽¹⁾

Check default SIM for placing a video call.

⁽¹⁾ Depending on your model and network operator.

Messaging

Set default SIM for sending a message.

Data connection

You can either set the data connection via SIM1/SIM2, or select **Off** to prevent your phone from transmitting data on any mobile networks. This is useful to avoid incurring significant data use charges on local carrier mobile networks, particularly if you do not have a mobile data agreement on one of the SIMs.

11.1.3 General settings

Roaming

- Data roaming** If you don't need to transmit data on other carriers' mobile networks, unmark the check box to avoid incurring significant roaming charges.
- Show roaming reminder** Set reminder: **Once, Always, Never.**

11.2 Wireless & networks

11.2.1 Airplane mode

Mark the check box of **Airplane mode** to simultaneously disable all wireless connections including Wi-Fi, Bluetooth and more.

11.2.2 Wi-Fi

Using Wi-Fi you can now surf the Internet without using your SIM card whenever you are in range of a wireless network. The only thing you have to do is to enter the **Wi-Fi settings** screen and configure an access point to connect your phone to the wireless network.

For detailed instructions on using Wi-Fi, please refer to section **6.1.2 Wi-Fi**.

11.2.3 Bluetooth

Bluetooth allows your phone to exchange data (videos, images, music and more) over short distances with another Bluetooth supported device (phone, computer, printer, headset, car kit and more).

For more information on Bluetooth, please refer to section **6.3 Connecting to Bluetooth devices**.

11.2.4 Tethering & portable hotspot

This function allows you to share your phone's mobile data connection via USB or as a portable Wi-Fi access point (Please refer to section 6.5).

11.2.5 VPN settings

A mobile virtual private network (mobile VPN or mVPN) provides mobile devices with access to network resources and software applications on their home network, when they connect via other wireless or wired networks. Mobile VPNs are used in environments where workers need to keep application sessions open at all times, throughout the working day, as the user connects via various wireless networks, encounters gaps in coverage, or suspend-and-resumes their devices to preserve battery life. A conventional VPN cannot survive such events because the network tunnel is disrupted, causing applications to disconnect, time out, fail, or even the computing device itself to crash.

For more information of VPN, please refer to section **6.6 Connecting to virtual private networks**.

11.2.6 Mobile networks

Data usage

Touch to view how much data has been transmitted over a mobile network in the current period for a particular SIM card. You can also reset the data usage value.

Network Mode

You can select your preferred network with this menu.

Access Point Names

Touch to enter Access Point Names list, where you can check the data connection you are using. You can also add/delete/edit an APN ⁽¹⁾. (refer to section 6.1.1 GPRS/EDGE/3G)

Network operators

Touch to select a network operator.

11.2.7 GPRS transfer pref.

You can connect to a GPRS service and GSM service (voice, SMS), but using only one or the other at a given time. Mark the check box of **GPRS transfer pref.** to prevent data transmission during a voice call.

⁽¹⁾ Application availability depends on country and operator.

11.3 Call settings

Use Call settings to configure normal phone call settings and other special features offered by your carrier. You can also use Call settings to configure the phone so that it can place outgoing calls only to a fixed set of phone numbers.

11.3.1 Voice call

Voicemail

- **Voicemail service** Opens a dialog where you can select your carrier's voicemail service or another service.
- **Voicemail settings** If you are using your carrier's voicemail service, this opens a dialog where you can enter the phone number to use for listening to and managing your voicemail. You can enter a comma (,) to insert a pause into the number — for example, to add a password after the phone number.

Call forwarding

Touch to configure how your calls are forwarded when you are busy, unanswered or unreachable.

Call barring

Touch to configure Call barring settings. Mark the check box to activate the call barring for outgoing and incoming calls.

Additional settings

- **Caller ID** Opens a dialog where you can set whether your phone number is displayed when making calls.
- **Call waiting** Mark the check box to notify you of a new incoming call.

11.3.2 Video call ⁽¹⁾

Picture for replacing local video You can pick a picture from your collection to display when Camera is unreachable.

Enable back camera Touch to enable switching between back or front cameras during a call.

Peer video bigger than local video Touch to enable a bigger view of peer.

Outgoing video call Touch to display local video when you place a call.

Incoming video call Touch to display local video when receiving an incoming call.

Call forwarding Refer to section 11.3.1 Voice call

Call barring Refer to section 11.3.1 Voice call

Additional settings Refer to section 11.3.1 Voice call

11.3.3 Internet call

For more information of Internet call, please refer to section **6.7 Configuring Internet (SIP) calling**.

11.3.4 Other settings

Fixed Dialing Numbers

Fixed Dialing Number (FDN) is a service mode of SIM, where outgoing calls are restricted to a set of phone numbers. These numbers are added to the FDN list. The most common practical application of FDN is for parents to restrict the phone numbers to which their children can dial.

For security reasons, you'll be prompted to enable FDN by entering SIM PIN2 which is usually acquired from your service provider or SIM maker.

⁽¹⁾ Depending on your model.

Call cost

Touch to view the **Last call cost/Total cost/Max cost/Reset call cost/Set currency and price per unit**, modify or reset them.

Cell broadcast

Enable receipt of CB messages by marking the check box of **Cell broadcast**.

You can access a series of adjustable CB settings by touching **Cell broadcast settings**.

Minute reminder

Mark the check box to enable minute reminder at 50s of every minute during a call.

Phone settings

If you want to reject a call with SMS, you might touch **Phone settings** to edit default message or select to edit message before sending.

TTY settings

TTY mode can be used by people who are deaf, have bad hearing or speech impairments.

After connecting the cell phone and TTY machine it connects to a relay service, which converts incoming speech to text for the person using the TTY and converts outgoing text from the TTY machine to a spoken voice for the person on the other end of the conversation.

11.4 Audio profiles

Use the Audio profiles settings to configure ringtones for different events and environments.

To revert to the default settings, press **Menu** key and touch **Restore defaults**.

11.4.1 General

To modify the sound settings within any profile, touch **General** to view the following functions by scrolling up/down. When finished, mark the check box on the right of the profile's name to activate the action.

- **Vibrate** Mark the check box to vibrate phone for incoming calls.
- **Volume** Touch to set volume for incoming calls, alarm and notifications.
- **Voice call ringtone** Touch to set your default voice incoming call ringtone.
- **Video call ringtone** Touch to set your default video incoming call ringtone.
- **Notification ringtone** Touch to set your default notification ringtone.
- **Audible touch tones** Mark the check box to enable playing tones when using dial pad.
- **Audible selection** Mark the check box to enable playing sound when making screen selection.
- **Screen lock sounds** Mark the check box to enable sounds to play when locking and unlocking the screen.
- **Haptic feedback** Mark the check box to activate vibration when pressing soft keys and on certain UI interactions.

11.4.2 Silent

This profile will silence all sounds except media & alarms.

11.4.3 Meeting

When this is selected the phone will not ring or beep by default unless an alarm has been set. A new event will cause it to vibrate.

11.4.4 Outdoor

This profile is designed for outdoor users who require louder ringtones.

11.5 Display

- **Auto-rotate screen** Mark the check box to activate automatic orientation switch when rotating phone.
- **Animation** Touch to select whether to show some, all or no animations.
- **Brightness** Touch to adjust the brightness of the screen.
- **Screen timeout** Touch to set screen timeout.

11.6 Location

Use the Location settings to set your preferences for using and sharing your location when your search for information and use location-aware applications, such as Google Maps.

11.6.1 My Location

Use wireless networks

Mark the check box to use information from Wi-Fi and mobile networks to determine your approximate location, for use in Google Maps, when you search, and so on. When you select this option, you're asked whether you consent to sharing your location anonymously with Google's location service.

Use GPS satellites

Check to use your phone's global positioning system (GPS) satellite receiver to pinpoint your location within an accuracy as close as several meters ("street level"). The process of accessing the GPS satellite and setting your phone's precise location for the first time will require up to 5 minutes. You will need to stand in a place with a clear view of the sky and avoid moving. After this, GPS will only need 20-40 seconds to identify your precise location.

GPS EPO assistance

Check to enable EPO (Extended Prediction Orbit) assistance. EPO is one of the off-line server based A-GPS technologies. It supports up to 30 days satellite orbit prediction, which can be used to greatly improve user experience by speeding up GPS Time To First Fix (TTFF).

EPO settings

- **Auto download** Mark the check box to permit applications to download data according to their own schedule.
- **EPO file info** Check download time, start time and expiry time for satellite position data.
- **About EPO** Touch to learn more.

Touch **Download** at the bottom of the screen to download satellite position data manually.

A-GPS/A-GPS settings

Check to enable A-GPS (assisted GPS), which improves the startup performance, or time-to-first-fix (TTFF) of a GPS satellite-based positioning system.

- **Disable after reboot** Select to disable A-GPS capability after reboot.
- **Network request** Select to allow network to request position.
- **Profile selector** Select a profile selector.
- **Mobile network** Check data connection status.

11.6.2 Security

Use the Security settings to define your usage preferences. You can also configure settings that help secure your phone and its data.

11.6.3 Screen unlock

Set up screen lock

- **None** Touch to disable screen unlock security.
- **Pattern** Touch to draw pattern to unlock screen.
- **PIN** Touch to enter a numeric PIN to unlock screen.
- **Password** Touch to enter a password to unlock screen.

11.6.4 SIM card lock

Set up SIM card lock

Opens a screen where you can configure the PIN required to use the phone, and where you can change the SIM PIN.

11.6.5 Passwords

Visible passwords

Mark the check box to show password as you type.

11.6.6 Device administration

Touch to add or remove device administrators.

11.6.7 Credential storage

Use secure credentials

Mark the check box to allow applications to access your phone's encrypted store of secure certificates and related passwords and other credentials. Credential storage is used to establish some kinds of VPN and Wi-Fi connections. If you have not set a password for the credential storage, this setting is dimmed.

Install from SD card

Touch to install encrypted certificates from the microSD card.

Set password

Touch to set or change a password for the credential storage (at least 8 characters).

Clear storage

Touch to clear credential storage of all contents and reset its password.

11.7 Applications

You use the Applications settings to view details about the applications installed on your phone, to manage their data and force them to stop, and to set whether you want to permit installation of applications that you obtain from web sites and email.

Unknown sources

Mark the check box to permit installation of applications that you obtain from web sites, email, or other locations other than Android Market.

To protect your phone and personal data, download applications only from trusted sources, such as Android Market.

Manage applications

Touch to manage and remove installed applications.

Running services

Touch to open a list of services—applications or parts of applications that provide services to other applications, or that run even when their main application isn't running. Examples include the Android onscreen keyboard and the small portion of Google Talk that always listens for incoming messages. Above each service, one or more gray bars show what processes the running service needs and how much memory they're using (how much memory you would recover if you stopped the service). Depending on the service, when you touch it in the list it either opens a dialog in which you can stop it or opens its Settings screen.

Storage use

Touch to view available memory and the memory used by applications on your phone.

Battery use

Touch to view the amount of power consumed by your phone. It also shows which applications consume the most battery power. For more information, refer to section 11.16 About phone.

Development

The Development screen contains settings that are useful for developing Android applications. For full information, including documentation of the Android applications and development tools, see the Android developer web site (<http://developer.android.com>).

- **USB debugging:** mark the check box to permit debugging tools on a computer to communicate with your phone via a USB connection.
- **Stay awake:** mark the check box to prevent the screen from dimming and locking when the phone is connected to a charger or to a USB device that provides power. Don't use this setting with a static image on the phone for long periods of time, or the screen may be marked with that image.
- **Allow mock locations:** mark the check box to permit a development tool on a computer to control where the phone believes it is located, rather than using the phone's own internal tools for this purpose.

11.8 Accounts & sync

Use the Accounts & Sync settings to add, remove, and manage your Google and other supported accounts. You also use these settings to control how and whether all applications send, receive, and synchronize data on their own schedules, and whether all applications can synchronize user data automatically.

Gmail, Google Calendar, and other applications may also have their own settings to control how they synchronize data; see the sections on those applications for details.

11.8.1 General sync settings

Background data

Mark the check box to permit applications to synchronize data in the background, whether or not you are actively working in them. Unmarking this setting can save battery power and lowers (but does not eliminate) data use.

Auto-sync

Mark the check box to permit applications to synchronize data on their own schedule. If you unmark this setting, you must touch an account in the list on this screen, touch **Sync now** to synchronize data for that account.

Synchronizing data automatically is disabled if **Background data** is unchecked. In that case, the **Auto-sync** checkbox is dimmed.

11.8.2 Manage accounts

The rest of this screen lists the Google Accounts and other accounts you've added to the phone. If you touch an account in this screen, its account screen opens.

This screen contains different options, depending on the kind of account. For Google Accounts, it lists the kinds of data you can synchronize to the phone, with checkboxes so you can turn synchronizing on and off for each kind. You can also touch **Sync now** to synchronize data. Press **Menu** key and touch **Remove account** to remove the account along with all its data (contacts, mail, settings, and so on).

11.9 Privacy

You use the Privacy settings to manage your personal information.

Back up my data

Mark the check box to back up your phone's settings and other application data to Google Servers, with your Google Account. If you replace your phone, the settings and data you've backed up are restored onto the new phone the first time you sign in with your Google Account. If you mark this option, a wide variety of settings and data are backed up, including your Wi-Fi passwords, bookmarks, a list of the applications you've installed, the words you've added to the dictionary used by the onscreen keyboard, and most of the settings that you configure with the Settings application. If you unmark this option, you stop backing up your settings, and any existing backups are deleted from Google Servers.

Automatic restore

Mark the check box to restore your backed up settings or other data when you reinstall an application.

Factory data reset

Erase all of your personal data from internal phone storage, including information about your Google Account, any other accounts, your system and application settings, and any downloaded applications. You can also mark the **Erase SD card** check box to erase all the data on your microSD card, such as music or photos. If you reset the phone in this way, you're prompted to re-enter the same kind of information as when you first started Android.

When you are unable to power on your phone, there is another way to perform a factory data reset by using hardware keys. Hold down **Volume up** key and press **Power** key at same time until the screen lights up.

11.10 SD card & phone storage

Use the microSD card & Phone Storage settings to monitor the total and available space on your phone and on your microSD card; to manage your microSD card; and if necessary, to reset the phone, erasing all of your personal information.

11.10.1 SD card

Total space/Available space

Lists the amount of space on any microSD card installed in your phone and the amount you can use to store photos, videos, music, and other files.

Unmount SD card

Unmounts the microSD card from your phone so that you can format the card or safely remove it when the phone is on. This setting is dimmed if there is no microSD card installed, if you have already unmounted it, or if you have mounted the microSD card on your computer.

Erase SD card

Permanently erases everything on a microSD card and prepares it for use with your phone. You must unmount a microSD card before you can format it.

11.10.2 Internal storage

Available space

Display the amount of internal phone storage used by the operating system, its components, applications (including those you downloaded), and their permanent and temporary data.



If a warning message comes up saying that phone memory is limited, you are required to free up space by deleting some unwanted applications, downloaded files etc.

11.11 Language & keyboard

Use the Language & keyboard settings to select the language for the text on your phone and for configuring the onscreen keyboard, including words that you've added to its dictionary.

11.11.1 Select language

Touch to select language and region you want.

11.11.2 User dictionary

Touch to open a list of the words you've added to the dictionary. Touch a word to edit or delete it. Press **Menu** key and touch **Add** to add a word.

11.11.3 Android keyboard

For phones with physical keyboards, unmark to disable the onscreen keyboard.

The Android keyboard settings apply to the onscreen keyboard that is included with your phone. The correction and capitalization features affect only the English version of the keyboard. Available options are as follows:

- **Vibrate on keypress**

Mark the check box to have the phone vibrate briefly each time you touch a key on the onscreen keyboard.

- **Sound on keypress**

Mark the check box to play a brief sound each time you touch a key on the onscreen keyboard.

- **Popup on keypress**

Touching a key causes a larger image of itself to pop up when this check box is marked.

- **Touch to correct words**

Marking this check box will underline any word that is touched in a text field, if the keyboard can suggest alternatives.

- **Auto-capitalization**

Mark the check box to have the onscreen keyboard automatically capitalize the first letter of the first word after a period, the first word in a text field, and each word in name fields.

- **Show settings key**

Touch to display or not the settings key.

- **Voice input**

Touch to display or not the Mic button on keyboard.

- **Input languages**

Touch to set input language.

- **Quick fixes**

Correct commonly typed mistakes.

- **Show suggestions**

Display suggested words while typing.

- **Auto-complete**

Spacebar and punctuation automatically insert highlighted word.

11.11.4 TouchPal keyboard

The TouchPal Input will allow you input text easily. You can make changes to the settings for easy input.

Available options are as follows:

- **Key press sound**

Touch to adjust volume of key press sound.

- **Key press vibration**

Touch to change the level of vibration.

- **Keypress popup**

Mark or unmark the check box to activate/deactivate the function.

- **Alternative symbols**

Mark the check box to enable multiple choice mode for each key.

- **Keyboard layout**

Touch to enter Keyboard layout settings. Mark/unmark the check box to activate or deactivate functions such as **Enable function bar**, **Enlarge key board height**, etc.

- **Smart input**

Touch to enter TouchPal Input settings. Mark/unmark the check box to activate or deactivate functions such as **Word prediction**, **Correct mistyping**, etc.

- **TouchPal Curve**

TouchPal Curve perfectly combines swiping with prediction. With Curve, you may swipe only a part of the word and pause in the middle at anytime. Touch to configure related settings.

- **Languages**

Touch to select the language you may use.

- **Dictionary management**

Manage user dictionary. You can import your contacts from phone Contacts, update dictionaries from server, or Backup & restore the user dictionary.

- **Help**

Touch related options to learn more about TouchPal.

11.11.5 Select input method

Touch to open a dialog where you can select a default input method.

11.12 Voice input & output

11.12.1 Voice recognizer settings

Touch to set Google voice recognition items:

- **Language** Choose an input language
- **SafeSearch** Set Google Search safety range
- **Block offensive words** Mark the check box to hide recognized offensive voice results

11.12.2 Text-to-speech settings ⁽¹⁾

You use the Text-to-Speech settings to configure the Android text-to-speech synthesizer, for applications like TalkBack that can take advantage of it.

If you don't have speech synthesizer data installed, only the Install voice data setting is available.

Listen to an example

Touch to play a brief sample of the speech synthesizer, using your current settings.

Install voice data

If your phone does not have speech synthesizer data installed, connect to Android Market and find yourself guided through the process of downloading and installing the data. This setting is not available if the data is already installed.

Always use my settings

Mark the check box to use the settings on this screen in place of speech synthesizer settings available in other applications.

Default engine

Touch to open a dialog where you can select which text-to-speech application you want to set as default.

Speech rate

Touch to open a dialog where you can select how quickly you want the synthesizer to speak.

Language

Touch to open a dialog where you can select the language of the text you want the synthesizer to read. This is particularly useful in combination with Always Use My Settings, to ensure that text is spoken correctly in a variety of applications.

Engines

Lists the engines installed on your phone.

⁽¹⁾ Availability depending on your country and network operator.

11.13 Accessibility ⁽¹⁾

You use the Accessibility settings to configure any accessibility plug-ins you have installed on your phone.

Accessibility

Mark the check box to enable all installed accessibility plug-ins.

Power button ends call

Mark the check box to end a call by pressing **Power** key during the call.

Quick boot

Mark the check box to disable quick boot by pressing **Power** key.

11.14 Date & time

Use Date & Time settings to customize your preferences for how date and time are displayed.

Automatic

Mark the check box to use network-provided values. Or unmark to set all values manually.

Set date

Touch to open a dialog where you can manually set the phone's date.

Select time zone

Touch to open a dialog where you can set the phone's time zone.

Set time

Opens a dialog where you can set the phone's time.

Use 24-hour format

Mark the check box to display the time using 24-hour clock format.

Select date format

Touch to open a dialog where you can select the format for displaying dates.

11.15 Schedule power on/off

You can use Schedule power on/off to set your phone to power on/off.

Mark the check box to activate the action.

11.16 About phone

Actually this contains information about a lot of things ranging from Legal information, Model number, Firmware version, Baseband version, Kernel version, Build number to those listed below:

System updates

System updates, or Firmware Upgrade Manager, gives you the option of downloading a firmware upgrade over the air directly from your mobile phone service provider. It ensures that you have the latest software improvements to enhance the features and performance on your phone.

⁽¹⁾ Availability depending on your country and network operator.

- **Check for update** Manually check for new firmware.
- **Auto-check intervals** Set frequency for auto-checking or set manual checking.
- **Reminder** Set a reminder for an unfinished update.
- **Help** Touch to learn more.



The functions below may incur additional network charges from your network operator. Extra fees may also be charged in roaming areas. To ensure a more stable, faster speed, you are strongly recommended to connect by Wi-Fi when you download firmware.

Status

This contains the status of the Battery status, Battery level, SIM status, IMEI information, Wi-Fi MAC address, Bluetooth address, Up time.

Battery use

Touch to open a list of the applications and operating system components you have used since you last connected the phone to a power source, sorted by the amount of power they have used. Touch an application in the list to view details about its power use and, if available, touch a button to open a settings or information screen for that component or application.

Legal information

Touch to view legal information.

System tutorial

Touch to launch Setup Wizard to learn more of your phone.

12 Making the most of your phone

You can download software upgrade for free from the website: www.alcatelonetouch.com.

12.1 Android Manager

The Android Manager includes:

- **Contacts**

It allows you to back up contact entries so that you don't have to worry about losing, breaking, switching phone or changing service providers.

- **Messages**

It frees you from painstakingly inputting text on the keypads. All of your messages are easily accessible and well-organized.

- **Photos**

It allows you to easily import photos from PC or the handset and organize them in different albums for better management.

- **Videos**

It allows you to insert video files from PC for playback and then upload to handset folder.

- **Music**

It allows you to quickly search your favourites in PC, manage the ultimate Library, and enjoy the easiest digital jukebox in your own mobile way.

- **Application**

It allows you to import downloaded mobile applications and have them installed into your handset upon synchronization.

- **File**

It allows you to organize Handset files with just a few clicks and files on the Handset can be at where you want them to be.

- **Sync**

It allows you to synchronize the Contacts and Calendar in Outlook/ Outlook Express and handset.

Supported Operating Systems

Windows XP/Vista/Windows 7.

12.2 One Touch Upgrade

Using One Touch Upgrade tool you can update your phone's software from your PC.

Download One Touch Upgrade from ALCATEL website (www.alcatelonetouch.com) and install it on your PC. Launch the tool and update your phone by following the step by step instructions (refer to the User Guide provided together with the tool).

Your phone's software will now have the latest software.



All personal information will be permanently lost following the update process. We recommend you backup your personal data using Android Manager before upgrading.

Supported Operating Systems

Windows XP/Vista/Windows 7.

13 Telephone warranty

Your phone is warranted against any defect or malfunctioning which may occur in conditions of normal use during the warranty period of twelve (12) months ⁽¹⁾ from the date of purchase as shown on your original invoice.

Batteries ⁽²⁾ and accessories sold with your phone are also warranted against any defect which may occur during the first six (6) months ⁽¹⁾ from the date of purchase as shown on your original invoice.

In case of any defect of your phone which prevents you from normal use thereof, you must immediately inform your vendor and present your phone with your proof of purchase.

If the defect is confirmed, your phone or part thereof will be either replaced or repaired, as appropriate. Repaired phone and accessories are entitled to a one (1) month warranty for the same defect. Repair or replacement may be carried out using reconditioned components offering equivalent functionality.

This warranty covers the cost of parts and labor but excludes any other costs.

⁽¹⁾ The warranty period may vary depending on your country.

⁽²⁾ The life of a rechargeable mobile phone battery in terms of conversation time standby time, and total service life, will depend on the conditions of use and network configuration. Batteries being considered expendable supplies, the specifications state that you should obtain optimal performance for your phone during the first six months after purchase and for approximately 200 more recharges.

This warranty shall not apply to defects to your phone and/or accessory due to (without any limitation):

- 1) Non-compliance with the instructions for use or installation, or with technical and safety standards applicable in the geographical area where your phone is used,
- 2) Connection to any equipment not supplied or not recommended by TCT Mobile Limited,
- 3) Modification or repair performed by individuals not authorised by TCT Mobile Limited or its affiliates or your vendor,
- 4) Inclement weather, lightning, fire, humidity, infiltration of liquids or foods, chemical products, download of files, crash, high voltage, corrosion, oxidation...

Your phone will not be repaired in cases where labels or serial numbers (IMEI) have been removed or altered.

There are no express warranties, whether written, oral or implied, other than this printed limited warranty or the mandatory warranty provided by your country or jurisdiction.

In no event shall TCT Mobile Limited or any of its affiliates be liable for indirect, incidental or consequential damages of any nature whatsoever, including but not limited commercial or financial loss or damage, loss of data or loss of image to the full extent those damages can be disclaimed by law.

Some countries/states do not allow the exclusion or limitation of indirect, incidental or consequential damages, or limitation of the duration of implied warranties, so the preceding limitations or exclusions may not apply to you.

4 Accessories (1).....

The latest generation of Alcatel GSM mobile phones offers a built-in handsfree feature that allows you to use the telephone from a distance, placed on a table for example. For those who prefer to keep their conversations confidential, an earpiece is also available known as the headset.



Standard charger



UK charger



Battery



USB cable



Stereo headset




Only use your telephone with the Alcatel batteries, chargers and accessories in your box.

(1) Pictures for reference only.

15 Troubleshooting.....

Before contacting the service centre, you are advised to follow the instructions below:

- You are advised to fully charge () the battery for optimal operation.
- Avoid storing large amounts of data in your phone as this may affect its performance.
- Use User Data Format and the One Touch Upgrade tool to perform phone formatting or software upgrading, (to reset User Data format, hold down **Volume up** key while simultaneously pressing the **Power** key). ALL User phone data: contacts, photos, messages and files, downloaded applications like APK games will be lost permanently. It is strongly advised to fully backup the phone data and profile via Android Manager before doing formatting and upgrading.

and carry out the following checks:

My phone is frozen or cannot switch on

- Check the battery contacts, remove and reinstall your battery, then turn your phone on
- Check the battery power level, charge for at least 20 minutes
- If it still does not work, please use User Data Format to reset the phone

My phone has not responded for several minutes

- Restart your phone by pressing and holding the **Power** key
- Remove the battery and re-insert it, then restart the phone

My phone turns off by itself

- Check that your keypad is locked when you are not using your phone, and make sure **Power** key is not mis-contacted due to unlocking keypad.
- Check the battery charge level

My phone cannot charge properly

- Make sure you are using an Alcatel battery and the charger from the box
- Make sure your battery is inserted properly and clean the battery contact if it's dirty. It must be inserted before plugging in the charger
- Make sure that your battery is not completely discharged; if the battery power is empty for a long time, it may take around 20 minutes to display the battery charger indicator on the screen.
- Make sure charging is carried out under normal conditions (0°C to +40°C)
- When abroad, check that the voltage input is compatible

My phone cannot connect to a network or “No service” is displayed

- Try connecting in another location
- Verify the network coverage with your operator
- Check with your operator that your SIM card is valid
- Try selecting the available network(s) manually (see Page 68)
- Try connecting at a later time if the network is overloaded


My phone cannot connect to the Internet

- Check that the IMEI number (press *#06#) is the same as the one printed on your warranty card or box.
- Make sure that the internet access service of your SIM card is available.
- Check your phone's Internet connecting settings
- Make sure you are in a place with network coverage
- Try connecting at a later time or another location

Invalid SIM card

- Make sure the SIM card has been correctly inserted (see Page 14)
- Make sure the chip on your SIM card is not damaged or scratched
- Make sure the service of your SIM card is available

Unable to make outgoing calls

- Make sure you have dialed a valid number and touch 
- For international calls, check the country and area codes
- Make sure your phone is connected to a network, and the network is not overloaded or unavailable
- Check your subscription status with your operator (credit, SIM card valid, etc.)
- Make sure you have not barred outgoing calls
- Make sure that your phone is not in flight mode

Unable to receive incoming calls

- Make sure your phone is switched on and connected to a network (check for overloaded or unavailable network)
- Check your subscription status with your operator (credit, SIM card valid, etc.)
- Make sure you have not forwarded incoming calls
- Make sure that you have not barred certain calls
- Make sure that your phone is not in flight mode

The caller's name/number does not appear when a call is received

- Check that you have subscribed to this service with your operator
- Your caller has concealed his/her name or number

I cannot find my contacts

- Make sure your SIM card is not broken
- Make sure your SIM card is inserted properly
- Import all contacts stored in SIM card to phone

The sound quality of the calls is poor

- You can adjust the volume during a call by pressing the **Volume** key
- Check the network strength 
- Make sure that the receiver, connector or speaker on your phone is clean

I am unable to use the features described in the manual

- Check with your operator to make sure that your subscription includes this service
- Make sure this feature does not require an Alcatel accessory

When I select a number from my contacts, the number cannot be dialed

- Make sure that you have correctly recorded the number in your file
- Make sure that you have selected the country prefix when calling a foreign country

I am unable to add a contact in my contacts

- Make sure that your SIM card contacts are not full; delete some files or save the files in the phone contacts (i.e. your professional or personal directories)

My callers are unable to leave messages on my voicemail

- Contact your network operator to check service availability

I cannot access my voicemail

- Make sure your operator's voicemail number is correctly entered in "**My numbers**"
- Try later if the network is busy

I am unable to send and receive MMS

- Check your phone memory availability as it might be full
- Contact your network operator to check service availability and check MMS parameters (see Page 51)
- Verify the server centre number or your MMS profile with your operator
- The server centre may be swamped, try again later

SIM card PIN locked

- Contact your network operator to obtain the PUK code (Personal Unblocking Key)

I am unable to connect my phone to my computer

- Install Alcatel Android Manager first of all
- Check that your USB driver is installed properly
- Open the Notification panel to check if the Android Manager Agent has activated
- Check that you have ticked the checkbox of USB debugging in **Settings\Applications\Development\USB debugging**
- Check that your computer meets the requirements for Alcatel Android Manager Installation
- Make sure that you're using the right cable from the box.

I am unable to download new files

- Make sure there is sufficient phone memory for your download
- Select the microSD card as the location to store downloaded files
- Check your subscription status with your operator

The phone cannot be detected by others via Bluetooth

- Make sure that Bluetooth is turned on and your phone is visible to other users (see Page 81)
- Make sure that the two phones are within Bluetooth's detection range

How to make your battery last longer

- Make sure you follow the complete charge time (minimum 3 hours)
- After a partial charge, the battery level indicator may not be exact. Wait for at least 20 minutes after removing the charger to obtain an exact indication
- Switch on the backlight upon request.
- Extend the email auto-check interval for as long as possible.
- Update news and weather information on manual demand, or increase their auto-check interval.
- Exit background-running applications if they are not being used for a long time.
- Deactivate Bluetooth, Wi-Fi, or GPS when not in use.

The phone becomes warm after prolonged calls, game playing, internet surfing or running other complex applications

- This heating is a normal consequence of the CPU handling excessive data. Ending above actions will make your phone return to normal temperature.

16 Specifications

Processor	Platform MTK6573
Platform	Android™ 2.3
Memory	ROM: 512 MB RAM: 256 MB
Dimensions (LxWxT)	112×58.6×12.1 mm
Weight	Around 123 grams with battery
Display	3.2-inch TFT-LCD touchscreen with 320×480 HVGA resolution
Network	UMTS: Dual-band 900/2100 MHz (one touch 918/one touch 918D); 850/2100 MHz (one touch 918N) GSM/GPRS/EDGE: Quad-band 850/900/1800/1900 MHz (Band frequency and data speed are operator dependent.)
GPS	Assisted GPS/Internal GPS antenna
Connectivity	<ul style="list-style-type: none">• Bluetooth® 3.0 A2DP• Wi-Fi®: IEEE 802.11 b/g/n• 3.5 mm audio jack• micro-USB
Camera	3.0 megapixel color camera

Audio supported formats	AAC, AAC+, AAC Enhanced, WB AMR, MP3, Midi
Video supported formats	MPEG-4 (playback only), H.263, H.264 (playback only)
Battery	<ul style="list-style-type: none"> • Rechargeable Lithium-ion battery • Capacity: 1300 mAh
Expansion Slot	microSD™ memory card (Availability of microSD card depends on market)
Special Features	<ul style="list-style-type: none"> • G-sensor • Digital Compass • Proximity sensor

Note Specifications are subject to change without prior notice.

ALCATEL is a trademark of Alcatel-Lucent and is used under license by TCT Mobile Limited.

© Copyright 2011 TCT Mobile Limited
All rights reserved

TCT Mobile Limited reserves the right to alter material or technical specification without prior notice.