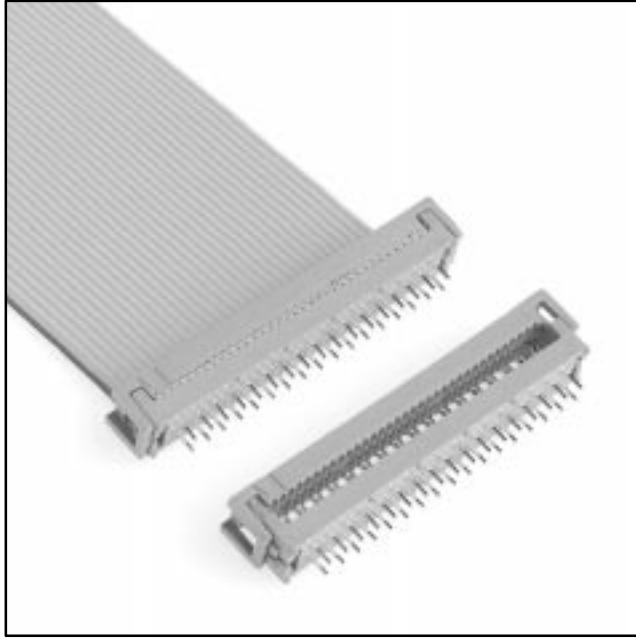


# .100" × .100" PCB

Two Row

3900 Series



- Fits standard .100 inch × .100 inch header layout
- Uses less board area than 4-row design
- Optional strain relief

Date Modified: February 19, 1999

TS-0004-13  
Sheet 1 of 3

---

## Physical

### Insulation

Material: Glass Filled Polyester (PBT)  
Flammability: UL 94V-0  
Color: Gray

### Contact

Material: See Ordering Information  
Plating  
Underplate: 2.5  $\mu\text{m}$  [100  $\mu\text{''}$ ] Nickel — QQ-N-290, Class 2  
U-Slot & Solder Tails: 5.1  $\mu\text{m}$  [200  $\mu\text{''}$ ] [ 90/10 ] Tin Lead — MIL-P-81728

**Marking:** 3M Logo, Part Identification Number

### Strain Relief

Material: Stainless Steel, 0.38 [0.15] Thk  
Gray PVC

**Wire Accommodation:** Solid or Stranded 26 & 28 AWG

---

## Electrical

**Current Rating:** 1 A

**Insulation Resistance:**  $> 1 \times 10^9 \Omega$  at 500 Vdc

**Withstanding Voltage:** 1000 Vrms at Sea Level

---

## Environmental

**Temperature Rating:**  $-55^\circ\text{C}$  to  $+105^\circ\text{C}$

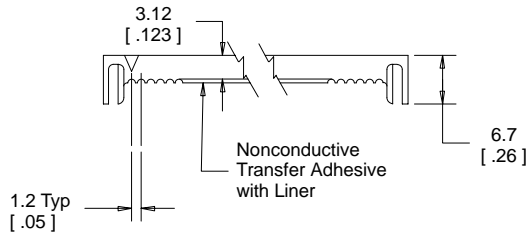
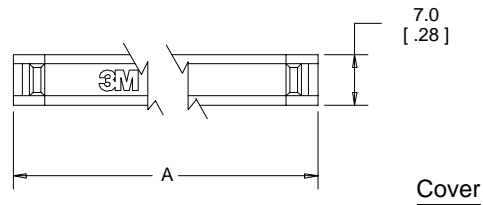
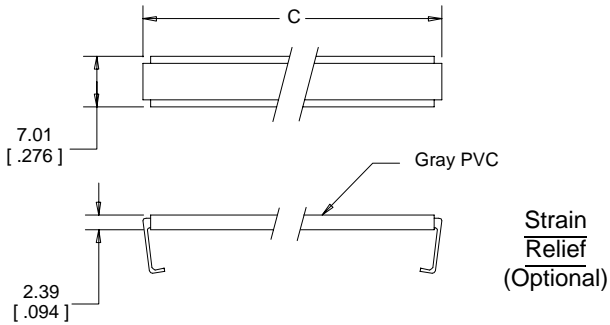
UL File No.: E68080

---

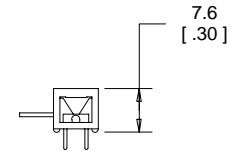
### 3M Interconnect Solutions Division

6801 River Place Blvd.  
Austin, TX 78726-9000

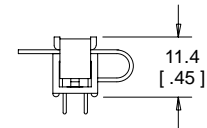
For technical, sales or ordering information call  
**800-225-5373**



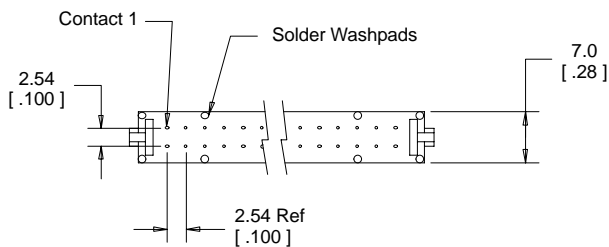
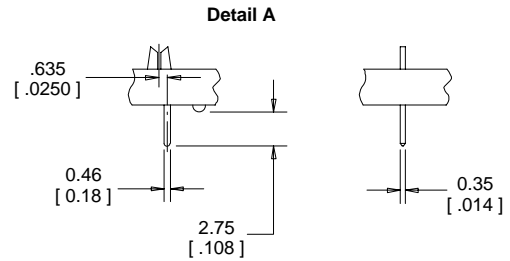
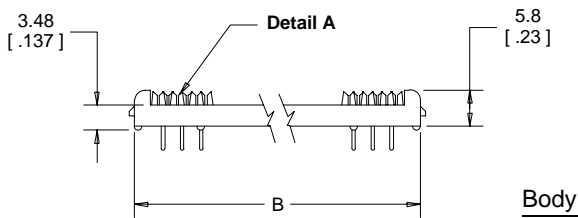
Assembled Height



Without Strain Relief



With Strain Relief



mm  
[Inch]

| Tolerance Unless Noted |     |      |
|------------------------|-----|------|
|                        | .0  | .00  |
| mm                     | ±.3 | ±.13 |

[ ] Dimensions for Reference only

Ordering Information

Connector  
39XX-X0X0T

Contact Quantity  
(See Table)

Contact Material:  
0 = Be Cu (C172) (Standard)  
2 = Phosphor Bronze (Special Order)

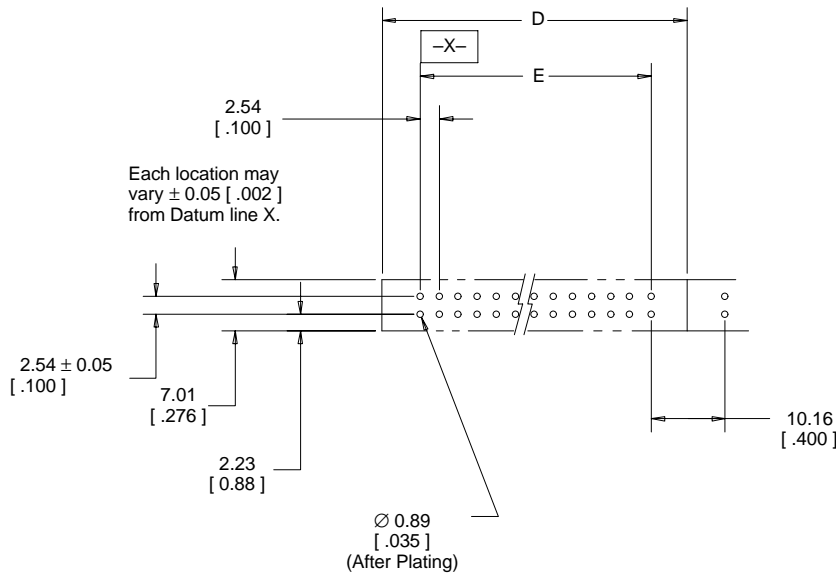
Cover Style:  
0 = Cover, Two Piece, with Adhesive  
1 = Cover, Preassembled No Adhesive

Strain Relief  
(Optional)  
3448-39XX

Contact Quantity  
(See Table)

TS-0004-13  
Sheet 2 of 3

| Contact Quantity | Dimensions    |               |               |               |               |
|------------------|---------------|---------------|---------------|---------------|---------------|
|                  | A             | B             | C             | D             | E             |
| 06               | 15.2 [ 0.60 ] | 12.8 [ 0.50 ] | 14.6 [ 0.57 ] | 15.2 [ 0.60 ] | 5.1 [ 0.20 ]  |
| 08               | 17.7 [ 0.70 ] | 15.3 [ 0.60 ] | 17.1 [ 0.67 ] | 17.7 [ 0.70 ] | 7.6 [ 0.30 ]  |
| 10               | 20.4 [ 0.80 ] | 17.8 [ 0.70 ] | 19.8 [ 0.78 ] | 20.4 [ 0.80 ] | 10.2 [ 0.40 ] |
| 14               | 25.5 [ 1.00 ] | 22.9 [ 0.90 ] | 25.0 [ 0.98 ] | 25.5 [ 1.00 ] | 15.2 [ 0.60 ] |
| 16               | 28.1 [ 1.10 ] | 25.5 [ 1.00 ] | 27.4 [ 1.08 ] | 28.1 [ 1.10 ] | 17.8 [ 0.70 ] |
| 20               | 33.1 [ 1.30 ] | 30.5 [ 1.20 ] | 32.5 [ 1.28 ] | 33.1 [ 1.30 ] | 22.9 [ 0.90 ] |
| 24               | 38.0 [ 1.50 ] | 35.6 [ 1.40 ] | 37.4 [ 1.47 ] | 38.0 [ 1.50 ] | 27.9 [ 1.10 ] |
| 26               | 40.8 [ 1.60 ] | 38.2 [ 1.50 ] | 40.0 [ 1.57 ] | 40.8 [ 1.60 ] | 30.5 [ 1.20 ] |
| 30               | 45.6 [ 1.80 ] | 43.2 [ 1.70 ] | 45.0 [ 1.77 ] | 45.6 [ 1.80 ] | 35.6 [ 1.40 ] |
| 34               | 50.9 [ 2.00 ] | 48.3 [ 1.90 ] | 50.3 [ 1.98 ] | 50.9 [ 2.00 ] | 40.6 [ 1.60 ] |
| 36               | 53.3 [ 2.10 ] | 50.9 [ 2.00 ] | 52.6 [ 2.07 ] | 53.3 [ 2.10 ] | 43.2 [ 1.70 ] |
| 40               | 58.5 [ 2.30 ] | 55.9 [ 2.20 ] | 58.0 [ 2.28 ] | 58.5 [ 2.30 ] | 48.3 [ 1.90 ] |
| 50               | 71.2 [ 2.80 ] | 68.6 [ 2.70 ] | 70.6 [ 2.78 ] | 71.2 [ 2.80 ] | 61.0 [ 2.40 ] |
| 60               | 83.9 [ 3.30 ] | 81.3 [ 3.20 ] | 83.3 [ 3.28 ] | 83.9 [ 3.30 ] | 73.7 [ 2.90 ] |
| 64               | 89.0 [ 3.50 ] | 86.4 [ 3.40 ] | 88.4 [ 3.48 ] | 89.0 [ 3.50 ] | 78.7 [ 3.10 ] |



Recommended Board Layout