

# Dell Fabric Manager Installation Guide 1.0.0



# Notes, Cautions, and Warnings



**NOTE:** A NOTE indicates important information that helps you make better use of your computer.



**CAUTION:** A CAUTION indicates either potential damage to hardware or loss of data and tells you how to avoid the problem.



**WARNING:** A WARNING indicates a potential for property damage, personal injury, or death.

© 2012 Dell Inc.

Trademarks used in this text: Dell™, the Dell logo, Dell Precision™, OptiPlex™, Latitude™, PowerEdge™, PowerVault™, PowerConnect™, OpenManage™, EqualLogic™, Compellent™, KACE™, FlexAddress™, Force10™ and Vostro™ are trademarks of Dell Inc. Intel®, Pentium®, Xeon®, Core® and Celeron® are registered trademarks of Intel Corporation in the U.S. and other countries. AMD® is a registered trademark and AMD Opteron™, AMD Phenom™ and AMD Sempron™ are trademarks of Advanced Micro Devices, Inc. Microsoft®, Windows®, Windows Server®, Internet Explorer®, MS-DOS®, Windows Vista® and Active Directory® are either trademarks or registered trademarks of Microsoft Corporation in the United States and/or other countries. Red Hat® and Red Hat® Enterprise Linux® are registered trademarks of Red Hat, Inc. in the United States and/or other countries. Novell® and SUSE® are registered trademarks of Novell Inc. in the United States and other countries. Oracle® is a registered trademark of Oracle Corporation and/or its affiliates. Citrix®, Xen®, XenServer® and XenMotion® are either registered trademarks or trademarks of Citrix Systems, Inc. in the United States and/or other countries. VMware®, Virtual SMP®, vMotion®, vCenter® and vSphere® are registered trademarks or trademarks of VMware, Inc. in the United States or other countries. IBM® is a registered trademark of International Business Machines Corporation.

2012 - 06

Rev. A0X

# Contents

<b>Notes, Cautions, and Warnings</b> .....	<b>2</b>
<b>1 Overview</b> .....	<b>5</b>
Hardware Requirements.....	5
Port Requirements.....	5
Software Requirements .....	6
Prerequisites.....	6
<b>2 Installing the Dell Fabric Manager</b> .....	<b>7</b>
<b>3 Accessing the Dell Fabric Manager</b> .....	<b>13</b>
<b>4 Starting and Stopping the DFM on Windows 7</b> .....	<b>15</b>
<b>5 Restarting the Dell Fabric Manager</b> .....	<b>17</b>
Restarting the DFM on Linux CentOS.....	17
Restarting the DFM on Windows 7.....	17
<b>6 Uninstalling the Dell Fabric Manager</b> .....	<b>19</b>
Uninstalling the DFM on Linux CentOS.....	19
Uninstalling the DFM on Windows 7:.....	19



# Overview

In this guide, you will learn how to install the Dell Fabric Manager (DFM) in your environment. For additional information about using DFM—see the *Dell Fabric Manager Deployment Guide* and Online Help. To view the *Dell Fabric Manger Deployment Guide* in the DFM, click the **Help** pull-down menu in the upper right of the screen.

 **NOTE:** You cannot install the DFM with an existing PostgreSQL database.

## Hardware Requirements

**Table 1. Linux CentOS Hardware Requirements**

Hardware	Requirement
Processor	Intel® Xeon® E5620 2.4Ghz, 12M Cache,Turbo, HT, 1066MHz Max Mem
System Type	64-bit operating system
Memory	For Linux CentOS, 32GB Memory (8x4GB), 1333MHz Dual Ranked LV RDIMMs for 2 Processors, Advanced ECC
Disk Space	1TB 7.2K RPM SATA 3.5 Hot Plug Hard Drive

**Table 2. Windows 7 Hardware Requirements**

Hardware	Requirement
Processor	Intel® Core (TM) i5–2520M CPU @2.50Ghz
Memory	8 GB
System Type	64–bit operating system
Disk Space	1TB 7.2K RPM SATA 3.5 Hot Plug Hard Drive

## Port Requirements

Port Number	Description
443 and 80	DFM Server ports used to take request from client (browser)
161	For SNMP get and set protocol between DFM Server and switch.
162	For SNMP trap listener between DFM Server and switch.
5432	Database server
61616	ActiveMQ

# Software Requirements

**Table 3. Software Requirements for Linux CentOS**

<b>Software</b>	<b>Notes</b>
Linux CentOS 5.7 and 5.8	Linux CentOS requires administrator permission on the target server. Make sure that you have permission on the network service account to modify the system temp directory. For Linux CentOS, the temp directory is <b>temp /tmp</b> .
Internet Explorer 9	
Chrome 18 and higher	
Firefox 12 and 13	

**Table 4. Software Requirements for Windows 7**

<b>Software</b>	<b>Notes</b>
Windows 7	Windows requires administrator permission on the target server. Make sure that you have permission on the network service account to modify the system temp directory. For Windows, the temp directory is <b>(%systemroot%\temp)</b>
Internet Explorer 9	
Chrome 18 and higher	
Firefox 12 and 13	

## Prerequisites

Before you begin, gather the following information:

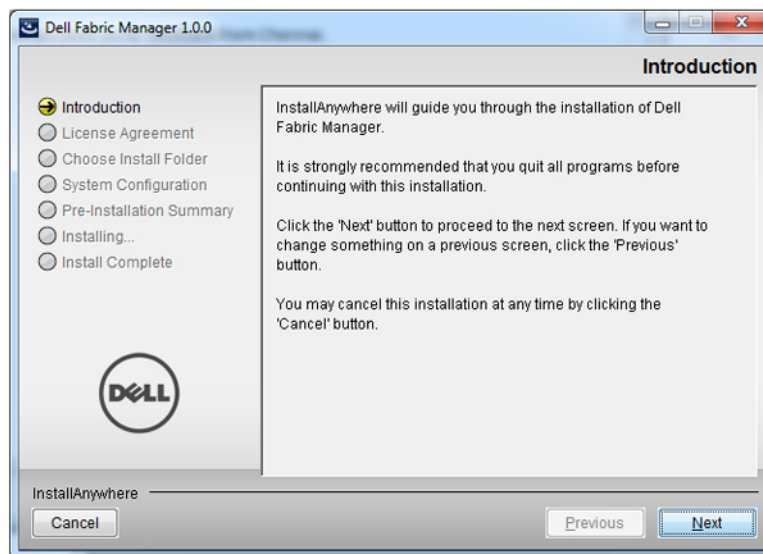
- Telnet credentials.
- Syslog IP address—Use this address to store the syslog messages.
- TFTP server address—Use this address to load the Dell Force10 operating software (FTOS) software images and configuration files during bare metal provisioning (BMP).
- Password for DFM superuser.
- Simple network management protocol (SNMP) read and write community strings.

# Installing the Dell Fabric Manager

The following section describes how to install the DFM on Windows 7 and Linux CentOS 5.7 and 5.8. After installation is complete, see the *Dell Fabric Manager Deployment Guide* and Online Help for configuration and deployment information.

 **NOTE:** You cannot install the DFM with an existing PostgreSQL database.

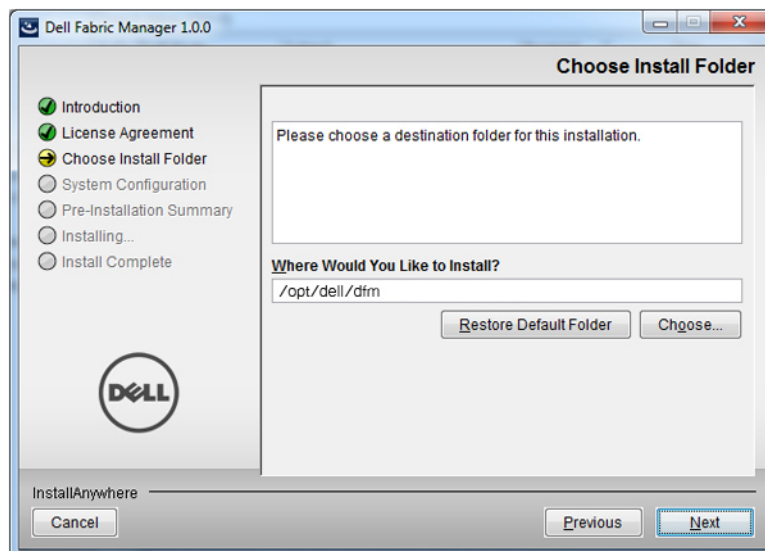
1. Close all your programs before installing the DFM.
2. Download the DFM software package.  
For Linux CentOS, the software package is titled **dfm\_1.0.0.bin**.  
For Windows, the software package is titled **dfm\_1.0.0.exe**.  
You can access the download page on the web: <https://www.force10networks.com/CSPortal20/Software/Downloads.aspx>
3. Click the software package link to begin the installation process.  
The **Introduction** screen displays.



4. Click the **Next** button.  
The **License Agreement** screen displays.

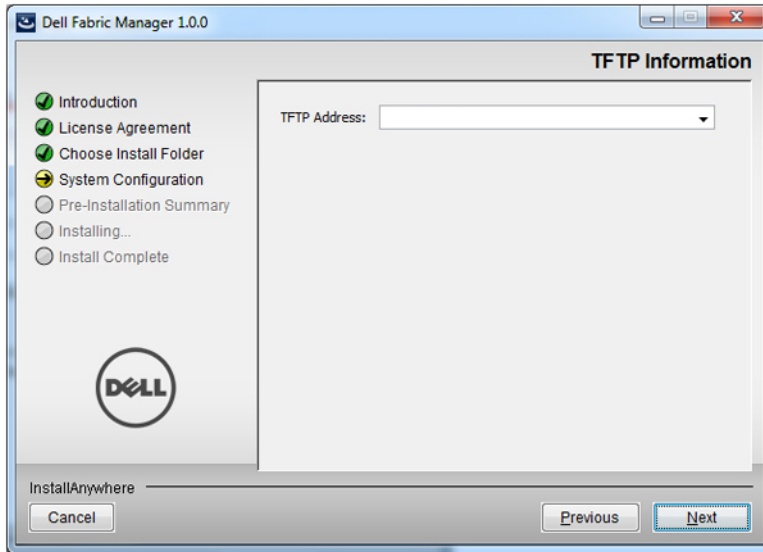


5. Click **I accept the terms of the License Agreement** and then click the **Next** button. The **Choose Install Folder** screen displays.



6. In the **Where Would you like to Install** field, specify the destination directory to install the DFM. For Linux, the default directory is **/opt/dell/dfm**. For Windows, the default directory is **C:\Program Files\Dell\Dell\_Fabric\_Manager**. The **TFTP Information** screen displays.

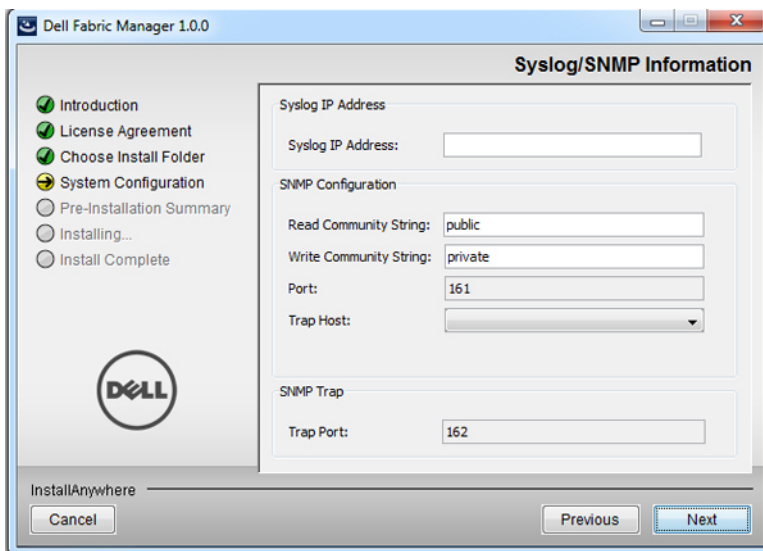




7. In the **TFTP Address** field, specify the trivial file transfer protocol (TFTP) server address to load the FTOS software images and configuration files during bare metal provisioning (BMP). You can also select an address from the **TFTP address** pull-down menu.

8. Click the **Next** button.

The **Syslog/SNMP Information** screen displays.



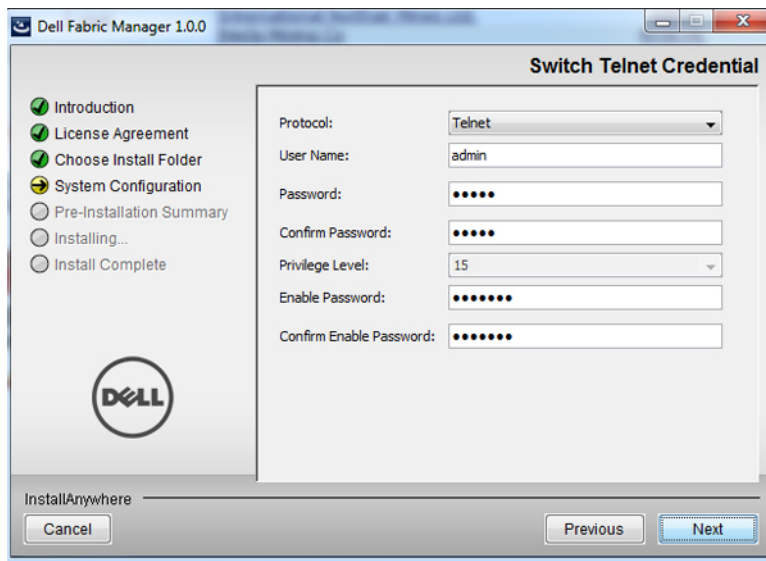
9. In the **Syslog IP Address** field, specify the syslog server IPv4 address to collect the syslog messages from the switches in the distributed core.

10. Click the **Next** button.

11. In the **SNMP Configuration** area, enter the SNMP read and write community strings; for example, **public** and **private**, so that the DFM can perform SNMP queries on the switches in the distributed core. The trap host uses the default value from your current host IP address.

12. Click the **Next** button.

The **Switch Telnet Credentials** screen displays.



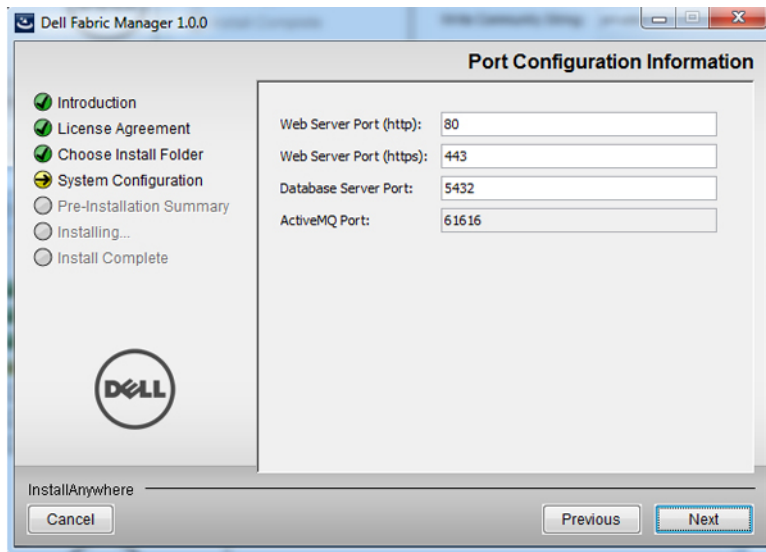
The **Switch Telnet Credentials** creates a user on the switches so that you can remotely make configuration changes to the switches in the distributed core. The privilege level is set to **15** and is a read-only field. By default, the installer uses the following switch credential information:

- default username—**admin**
- password— **admin**
- enable password— **force10**

13. From the **Protocol** pull-down menu, select one of the following protocols: **Telnet**, **SSHv2**, or **Telnet & SSHv2**.

14. Click the **Next** button.

The **Port Configuration Information** screen displays.



15. Enter the port number for the web servers and database server:

- a) In the **Web Server Port for (http)** field; enter the HTTP web server port. The default value is **80**
- b) In the **Web Server Port for (https)**; enter the HTTPS web server port. The default value is **443**.

c) In the **Database Server Port** field, enter the database server port for the PostgreSQL database. The default value is **5432**.

 **NOTE:** Port **61616** is reserved for ActiveMQ. The **ActiveMQ Port** field is a read only field.

16. Click the **Next** button.

The **Password for the DFM superuser** screen displays.



17. In the **Password** field, enter the DFM superuser password. The password must contain the following:

- a) At least one uppercase character
- b) At least one lowercase character
- c) At least one 1 numeric value
- d) 6 to 25 characters

18. In the **Confirm Password** field, confirm the DFM superuser password.

19. Click the **Next** button.

The **Pre-Installation Summary** screen is displayed.



20. Click the **Install** button.

The **Install Complete** screen is displayed.

21. Click the **Next** button.

22. Click the **Done** button.

For Linux CentOS, the DFM automatically starts after you successfully install the software. For information on how to start the DFM on Windows 7, see [Starting and Stopping the DFM on Windows 7](#). For information about how to access the DFM, see [Accessing Dell Fabric Manager](#).

# Accessing the Dell Fabric Manager

To access the DFM:

1. Enter the DFM address using the following URL format: **http://<dfm-server>:<port>**  
The browser displays a website security certificate message.
2. Add the DFM certificate as a trusted certificate.  
You are routed to the HTTPS location. The DFM user login prompt displays.
3. In the **User Name** field, enter the user name. The default user name is **superuser**.
4. In the **Password** field, enter the password.
5. Click the **Log In** button.



## Starting and Stopping the DFM on Windows 7

This section describes how to start and stop the DFM on Windows 7. For Linux CentOS, the DFM is automatically started after you have successfully installed the software.

To start the DFM on Windows 7:

1. Navigate to the **Start > All Programs > Dell > Dell Fabric Manager > Start Server** menu.
2. Right click on the **Start Server** option and then select the **Run as Administrator** menu.

To stop the DFM on Windows 7:

1. Navigate to the **Start > All Programs > Dell > Dell Fabric Manager > Stop Server** menu.
2. Right click on the **Stop Server** option and then select the **Run as Administrator** menu.





# Restarting the Dell Fabric Manager

## Restarting the DFM on Linux CentOS

To restart the DFM on Linux CentOS:

1. Navigate to the `/opt/dell/dfm/bin/dfmServer.sh` directory.
2. Run the `dfmServer.sh restart` command.

## Restarting the DFM on Windows 7

To restart the DFM on Windows 7:

1. Navigate to the **Start > All Programs > Dell > Dell Fabric Manager > Stop Server** menu.
2. Right click on the **Stop Server** option and select the **Run as Administrator** menu to stop the DFM server.
3. Navigate to the **Start > All Programs > Dell > Dell Fabric Manager > Start Server** menu.
4. Right click on the **Start Server** option and select the **Run as Administrator** menu to start the DFM server.



# Uninstalling the Dell Fabric Manager

## Uninstalling the DFM on Linux CentOS

To uninstall the DFM on Linux CentOS:

1. Navigate to the **/Uninstall Dell Fabric Manager** directory.
2. Run the DFM uninstall program.

## Uninstalling the DFM on Windows 7:

To uninstall the DFM on Windows 7:

1. Navigate to the **Start > All Programs > Dell > Dell Fabric Manager > Uninstall Dell Fabric Manager** menu.
2. Right click on the **Uninstall Dell Fabric Manager** option and then select the **Run as Administrator** option.