

TECHNICAL MANUAL
DIRECT SUPPORT AND GENERAL
SUPPORT MAINTENANCE REPAIR
PARTS AND SPECIAL TOOLS LISTS
(INCLUDING DEPOT MAINTENANCE REPAIR
PARTS AND SPECIAL TOOLS)
FOR
POWER SUPPLIES PP-4763/GRC
(NSN 5820-00-937-7690)
AND
PP-4763A/GRC (NSN 5820-00-113-9768)

TECHNICAL MANUAL }
 No. 11-5820-765-34P-1 }

HEADQUARTERS,
 DEPARTMENT OF THE ARMY
 WASHINGTON, DC, 5 MARCH 1985

**DIRECT SUPPORT AND GENERAL SUPPORT MAINTENANCE
 REPAIR PARTS AND SPECIAL TOOLS LISTS
 (INCLUDING DEPOT MAINTENANCE REPAIR PARTS AND SPECIAL TOOLS
 FOR
 POWER SUPPLIES PP-4763/GRC
 (NSN 5820-00-937-7690)
 AND
 PP-4763A/GRC (NSN 5820-00-113-9768)**

Current as of 9 October 1984

REPORTING ERRORS AND RECOMMENDING IMPROVEMENTS

You can help improve this manual. If you find any mistakes or if you know of a way to improve the procedures, please let us know. Mail your letter, DA Form 2028 (Recommended Changes to Publications and Blank Forms), or DA Form 2028-2 located in the back of this manual direct to Commander, US Army Communications-Electronics Command and Fort Monmouth, ATTN: AM-SEL-ME-MP, Fort Monmouth, NJ 07703-5007.

In either case, a reply will be furnished direct to you.

Table of Contents

| | Page | Illus Figure |
|--|------|-----------------|
| SECTION I. Introduction | 1 | |
| GROUP II. Repair Parts List | 1-1 | |
| 00 Power Supply PP-4763/GRC and PP-4763A/GRC, Controls and Connections | 1-1 | 1 |
| Power Supply PP-4763/GRC and PP-4763A/GRC, Parts Location | 2-1 | 2 |
| Power Supply PP-4763/GRC and PP-4763A/GRC, Cover Assembly | 3-1 | 3 |
| Power Supply PP-4763/GRC and PP-4763A/GRC, Frame and Switch Assembly | 4-1 | 4 |
| Power Supply PP-4763/GRC and PP-4763A/GRC, Front Panel Assembly | 5-1 | 5 |
| Power Supply PP-4763/GRC and PP-4763A/GRC, Left Panel Assembly | 6-1 | 6 |
| Power Supply PP-4763/GRC and PP-4763A/GRC, Left Panel Subassembly | 7-1 | 7 |
| Power Supply PP-4763/GRC and PP-4763A/GRC, Rear Panel Internal View | 8-1 | 8 |
| Power Supply PP-4763/GRC and PP-4763A/GRC, Rear Panel Subassemblies | 9-1 | 9 |
| Power Supply PP-4763/GRC and PP-4763A/GRC, Right Panel, Internal View | 10-1 | 10 |
| Power Supply PP-4763/GRC and PP-4763A/GRC, Transformer Frame Assembly | 11-1 | 11 |
| Power Supply PP-4763/GRC and PP-4763A/GRC, Transformer Frame Subassemblies | 12-1 | 12 |
| Power Supply PP-4763/GRC and PP-4763A/GRC, Transformer and Terminal Board Assembly | 13-1 | 13 |
| 01 Circuit Card Assembly (PC101) (PP-4763/GRC) | 14-1 | 14 |
| Circuit Card Assembly (A1) (PP-4763A/GRC) | 15-1 | 15 |
| SECTION III. Special Tools List (Not applicable) | | |
| IV. National Stock Number and Part Number Index | I-1 | |

SECTION I

INTRODUCTION

1. Scope

This manual lists and authorizes spares and repair parts; special tools; special test, measurement, and diagnostic equipment (TMDE); and other Special support equipment required for performance of organizational, direct support and general support maintenance of the PP-4763/GRC. It authorizes the requisitioning, issue, and disposition of spares, repair parts and special tools as indicated by the source, maintenance and recoverability (SMR) codes.

2. General

This Repair Parts and Special Tools List is divided into the following sections:

a. Section II. Repair Parts List. A list of spares and repair parts authorized by this RPSTL for use in the performance of maintenance. The list also includes parts which must be removed for replacement of the authorized parts. Parts lists are composed of functional groups in ascending numeric sequence, with the parts in each group listed in ascending item number sequence. Figure numbers are listed directly beneath the group header.

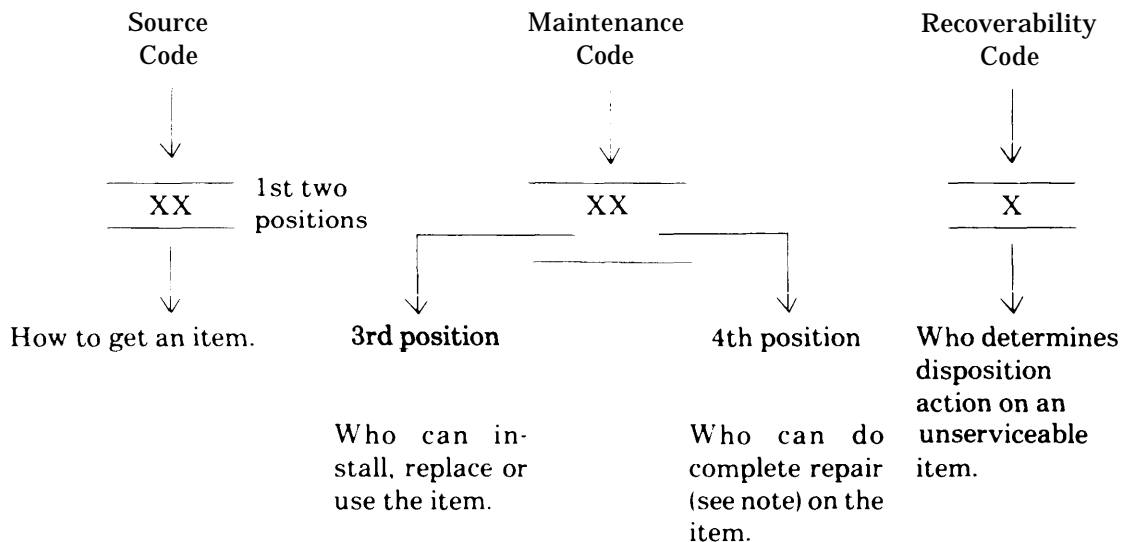
b. Section III. Special Tools List. Not applicable.

c. Section IV. National Stock Number and Part Number Index. A list, in National item identification number (NIIN) sequence, of all National stock numbered items appearing in the listing, followed by a list in alphameric sequence of all part numbers appearing in the listings. National stock numbers and part numbers are cross-referenced to each illustration figure and item number appearance.

3. Explanation of Columns (Section II and III)

a. Item No. (Column 1). Indicates the number used to identify items called out in the illustration.

b. SMR Code (Column 2). The source, maintenance, and recoverability y (SMR) code is a five-position code containing supply/requisitioning information, maintenance category authorization criteria, and disposition instruction, as shown in the following breakout:



NOTE

Complete repair: Maintenance capacity, capability, and authority to perform all corrective maintenance tasks of the "Repair" function in a use/user environment in order to restore serviceability to a failed item.

(1) *Source code.* The source code tells you how to get an item needed for maintenance, repair, or overhaul of an end item-equipment. Explanations of source codes follows:

| <i>Code</i> | <i>Explanation</i> |
|--|---|
| PA PB PC PD PE PF PG | Stocked items; use the applicable NSN to request/requisition items with these source codes. They are authorized to the category indicated by the code entered in the third position of the SMR code. |
| | NOTE Items coded PC are subject to deterioration. |
| KD) KF KB | Items with these codes are not to be requested/requisitioned individually. They are part of a kit which is authorized to the maintenance category indicated in the third position of the SMR code. The complete kits must be requisitioned and applied. |

MO- Made at org/
AVUM category
MF- Made at DS/
AVUM category
MH- Made at GS
category
ML-- Made at Spe-
cialized Re-
pair Activity
(SRA)
MD- Made at De-
pot

Items with these codes are not to be requested/requisitioned individually. They must be made from bulk material which is identified by the part number in the description and usable on code (UOC) column and listed in the Bulk Material group of the repair parts list. If the item is authorized to you by the third position code of the SMR code, but the source code indicates it is made at a higher category, order the item from the higher category of maintenance.

AO— Assembled
by org/
AVUM cate-
gory
AF— Assembled
by DS/
AVIM cate-
gory
AH— Assembled
by GS cate-
gory
AL - Assembled
by SRA
AD— Assembled
by Depot

Items with these codes are not to be requested/requisitioned individually. The parts that make up the assembled item must be requisitioned or fabricated and assembled at the category of maintenance indicated by the source code. If the disposition code of the SMR code authorizes you to replace the item, but the source code indicates the item is assembled at a higher category, order the item from the higher category of maintenance.

| <i>Code</i> | <i>Explanation</i> |
|-------------|--|
| XA- | Do not requisition an "XA" coded item. Order its next higher assembly. |
| XB— | If an "XB" item is not available from salvage, order it using the FSCM and part number given. |
| XC— | Installation drawing, diagram, instruction sheet, field service drawing, that is identified by manufacturer part number. |
| XD- | Item is not stocked. Order an "XD" coded item through normal supply channels using the FSCM and part number given, if no NSN is available. |

NOTE

Cannibalization or controlled exchange, when authorized, may be used as a source of supply for items with the above source codes, except for those source coded "XA" or those aircraft support items restricted by requirements of AR 750-1.

(2) *Maintenance code.* Maintenance codes tell you the category of maintenance authorized to USE and REPAIR support items. The maintenance codes are entered in the third and fourth positions of the SMR code as follows:

(a) The maintenance code entered in the third position tells you the lowest maintenance category authorized to remove, replace, and use an item. The maintenance code entered in the third position will indicate authorization to one of the following categories of maintenance.

- | code | Application/Explanation |
|------|---|
| C— | Crew or operator maintenance done within organizational or aviation maintenance. |
| O— | Organizational or aviation unit category can remove, replace, and use the item. |
| F— | Direct support or aviation intermediate category can remove, replace, and use the item. |
| H— | General support category can remove, replace, and use the item. |
| L— | Specialized repair activity can remove, replace, and use the item. |
| D— | Depot category can remove, replace, and use the item. |

(b) The maintenance code entered in the fourth position tells whether or not the item is to be repaired and identifies the lowest maintenance category with the capability to do complete repair (i.e., perform all authorized repair functions). This position will contain one of the following maintenance codes.

NOTE

Some limited repair may be done on the item at a lower category of maintenance, if authorized by the Maintenance Allocation Chart (MAC) and SMR codes.

- | Code | Application/Explanation |
|------|--|
| O— | Organizational or aviation unit is the lowest category that can do complete repair of the item. |
| F— | Direct support or aviation intermediate is the lowest category that can do complete repair of the item. |
| H— | General support is the lowest category that can do complete repair of the item. |
| L— | Specialized repair activity (designates the specialized repair activity) is the lowest category that can do complete repair of the item. |
| D— | Depot is the lowest category that can do complete repair of the item. |
| Z— | Nonreparable. No repair is authorized. |
| B— | No repair is authorized. (No parts or special tools are authorized for the maintenance of a "B" coded item). |

However, the item may be reconditioned by adjusting, lubricating, etc., at the user category.

(3) *Recoverability code.* Recoverability codes are assigned to items to indicate the disposition action on unserviceable items. The recoverability y code is entered in the fifth position of the SMR Code as follows:

- | Recoverability codes | Application/Explanation |
|----------------------|---|
| Z— | Nonreparable Item. When unserviceable, condemn and dispose of the item at the category of maintenance shown in the third position of SMR Code. |
| O— | Reparable item. When uneconomically repairable, condemn and dispose of the item at organizational or aviation unit category. |
| F— | Reparable item. When uneconomically repairable, condemn and dispose of the item at direct support or aviation intermediate category. |
| H— | Reparable item. When uneconomically repairable, condemn and dispose of the item at general support category. |
| D— | Reparable item. When beyond lower category repair capability, return to depot. Condemnation and disposal of item not authorized below depot category. |
| L— | Reparable item. Condemnation and disposal not authorized below specialized repair activity (SRA). |

Recoverability
codes

Application/Explanation

A— Item requires special handling or condemnation procedures because of specific reasons (e.g., precious metal content, high dollar value, critical material, or hazardous material). Refer to appropriate manuals/directives for specific instructions.

c. *FSCM (Column (3))*. The Federal Supply Code for Manufacturer (FSCM) is a 5-digit numeric code which is used to identify the manufacturer, distributor, or Government agency, etc., that supplies the item.

d. *Part Number (Column (4))*. Indicates the primary number used by the manufacturer (individual, company, firm, corporation, or Government activity), which controls the design and characteristics of the item by means of its engineering drawings, specifications, standards, and inspection requirements to identify an item or range of items.

NOTE

When you use a NSN to requisition an item, the item you receive may have a different part number from the part ordered.

e. *Description and Usable on Code (UOC) (Column (5))*. This column includes the following information.

(1) The Federal item name and, when required, a minimum description to identify the item.

(2) Usable on code, when applicable (para 5).

(3) The statement “END OF FIGURE” appears just below the last item description in Column (5) for a given figure in both section II and section III.

f. *Qty (Column (6))*. Indicates the quantity of the item used in the breakout shown on the illustration figure, which is prepared for a functional group, subfunctional group, or an assembly. A “V” appearing in this column in lieu of a quantity indicates that the quantity is variable and the quantity may vary from application to application.

4. Explanation of Columns (Section IV)

a. *National Stock Number (NSN) Index*.

(1) *Stock number column*. This column lists the NSN by National item identification number (NIIN) sequence. The NIIN consists of the last nine digits of the NSN. When using this column to locate an item, ignore the first four digits of the NSN. When requisitioning items use the complete NSN (13 digits).

(2) *Fig. column*. This column lists the number of the figure where the item is identified/located. The illustrations are in numerical sequence in sections II and III.

(3) *Item column*. The item number identifies the item associated with the figure listed in the adjacent Fig. column. This item is also identified by the NSN listed on the same line.

b. *Part Number Index*. Part numbers in this index are listed by part number in ascending alphameric sequence.

(1) *FSCM column*. This column lists the Federal supply code for manufacturer (FSCM).

(2) *Part number column*. This column indicates the part number assigned to the item.

(3) *Stock number column*. This column lists the National stock number for the associated part number and manufacturer identified in the part number and FSCM columns to the left.

(4) *Fig. column*. This column lists the number of the figure where the item is identified/located in sections II and III.

(5) *Item column*. The item number is that number assigned to the item as it appears in the figure referenced in the adjacent figure number column.

5. Special Information

a. *Usable on Code*. The usable on code appears in the lower left corner of the description column heading. Usable on codes are shown as “UOC: “ in the description column (justified left) on the first line applicable item description nomenclature. Uncoded items are applicable to all models. Identification of the usable on codes used in this RPSTL are:

| Code | Used on |
|------|--------------|
| 3JQ | PP-4763/GRC |
| BB6 | PP-4763A/GRC |

b. *Associated Publications*. The publications listed below pertain to the PP-4763/GRC and its components: TM 11-5820-765-34P Power Supplies PP-4763/GRC and PP-4763A/GRC

c. National Stock Numbers. National stock numbers (NSN's) that are missing from P source coded items have been applied for and will be added to this TM by future change/revision when they are entered in the Army Master Data File (AMDF). Until the NSN'S are established and published, submit exception requisitions to: Commander, US Army Communications-Electronics Command and Fort Monmouth, ATTN: AMSEL-MM, Fort Monmouth, New Jersey 07703-5006 for the part required to support your equipment.

6. How to Locate Repair Parts

a. When National stock number or part number is not known.

(1) *First.* Using the table of contents, determine the assembly group or subassembly group to which the item belongs. This is necessary since figures are prepared for assembly groups and subassembly groups, and listings are divided into the same groups.

(2) *Second.* Find the figure covering the assembly group or subassembly group to which the item belongs.

(3) *Third.* Identify the item on the figure and note the item number.

(4) *Fourth.* Refer to the Repair Parts List for the figure to find the part number for the item number noted on the figure.

(5) *Fifth.* Refer to the Part Number Index to find the NSN, if assigned.

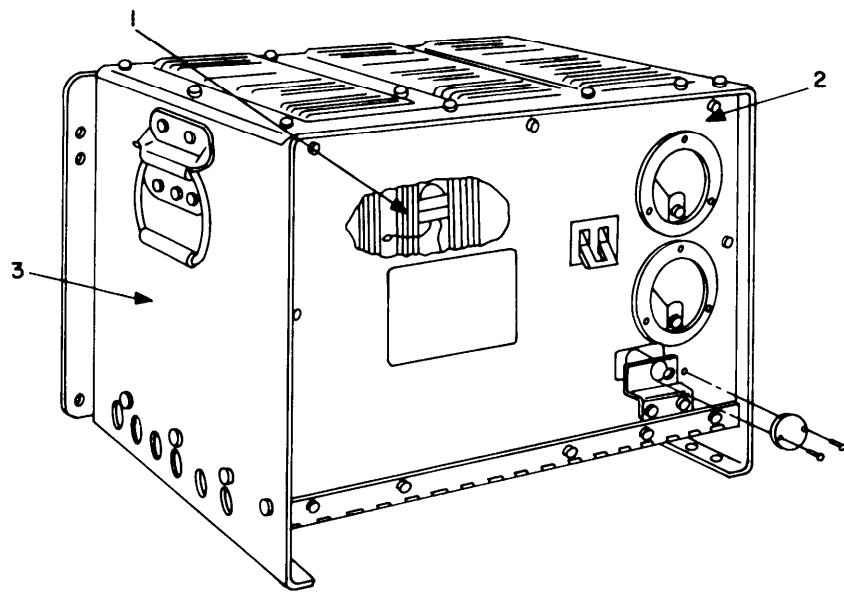
b. When National stock number or part number is known.

(1) *First.* Using the index of National stock numbers and part numbers, find the pertinent National stock number or part number. The NSN index is in National item identification number (NIIN) sequence (para 4a(1)). The part numbers in the part number index are listed in ascending alphameric sequence (para 4b). Both indexes cross-reference you to the illustration figure and item number of the item you are looking for.

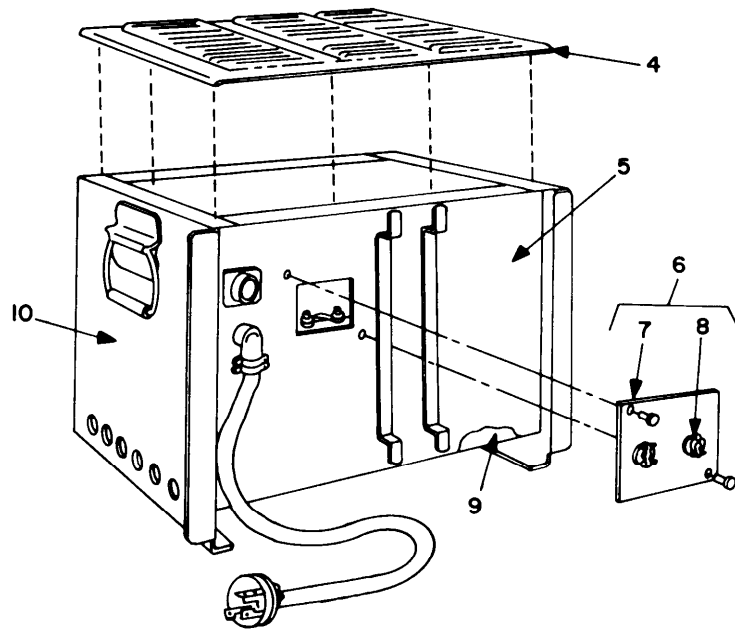
(2) *Second.* After finding the figure and item number, verify that the item is the one you're looking for, then locate the item number in the repair parts list for the figure.

7. Abbreviations

Not applicable.



FRONT VIEW



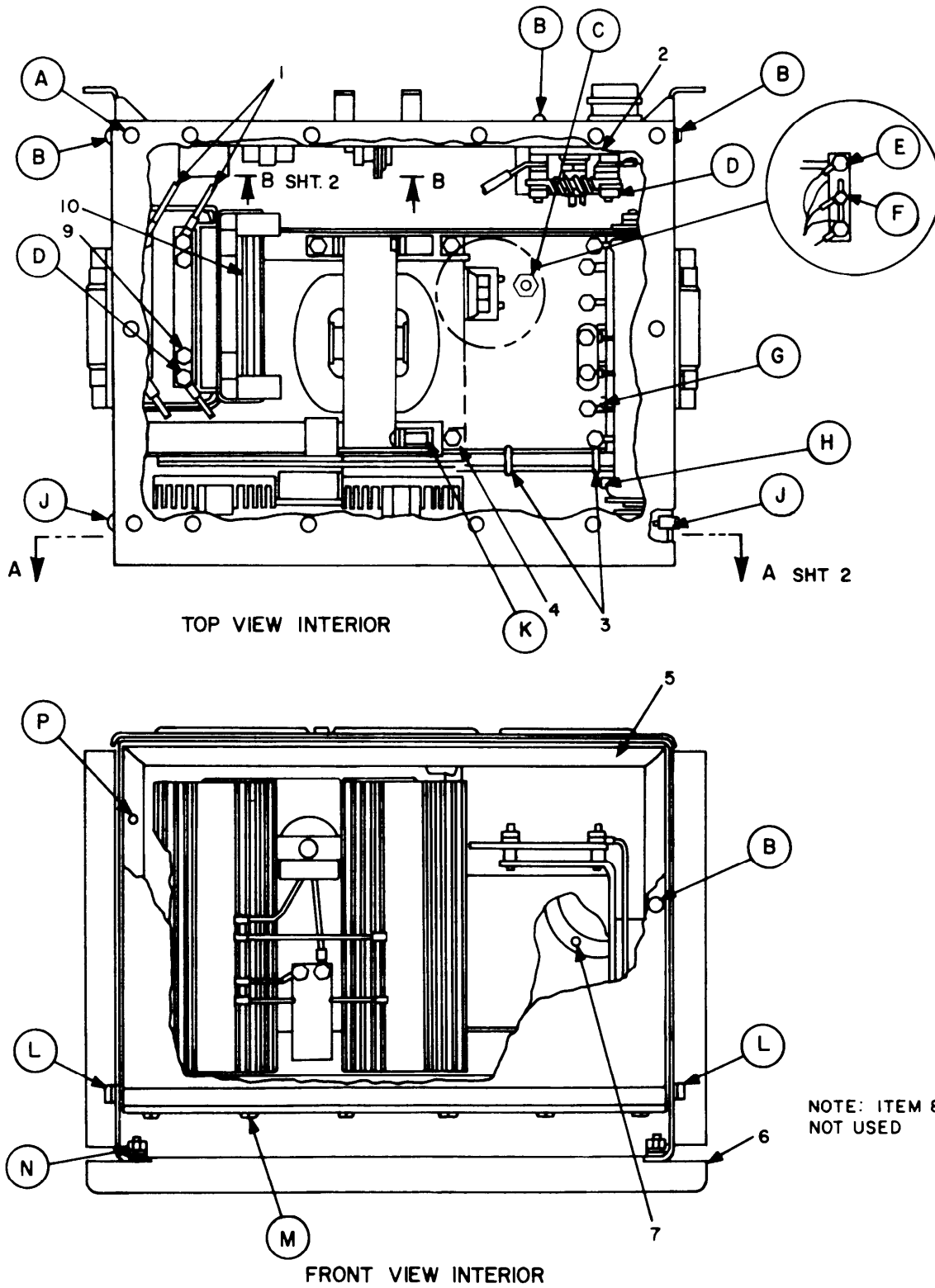
REAR VIEW

EL2XK022

Figure 1. Power supply PP-4763/GRC and PP-4763A/GRC, controls and connections.

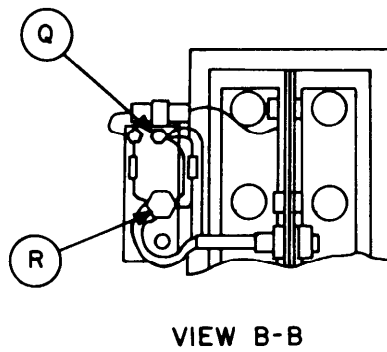
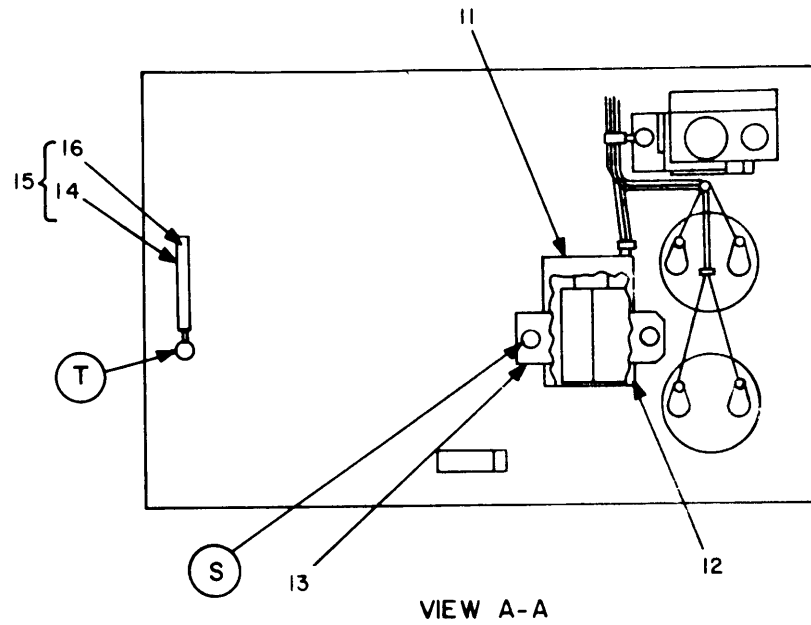
| (1) ITEM NO | (2) SMR CODE | (3) FSCM | (4) PART NUMBER | (5) DESCRIPTION AND USABLE ON CODE (UOC) | (6) QTY |
|---|--------------------|-------------|-----------------------|---|------------|
| GROUP 00 POWER SUPPLIES PP-4763/GRC PP-4736A/GRC CONTROLS AND CONNECTIONS | | | | | |
| FIGURE 1 | | | | | |
| 1 | XBHZZ | 80063 | SM-D-633308 | TRANSFORMER-FRAME UOC:BB6 | 1 |
| 1 | XBHHH | 80063 | SM-D-640022 | TRANSFORMER-FRAME UOC:3JQ | 1 |
| 2 | XBHHH | 80063 | SM-D-633305 | PANEL ASSEMBL UOC:BB6 | 1 |
| 2 | XBHHH | 80063 | SM-D-640013 | PANEL ASSEMBLY, UOC:3JQ | 1 |
| 3 | XBHHH | 80063 | SM-C-633307 | PANEL ASSEMBLY,LEFT UOC:BB6 | 1 |
| 3 | XBHHH | 80063 | SM-C-640018 | PANEL ASSEMBLY,LEFT UOC:3JQ | 1 |
| 4 | XBHHH | 80063 | SM-C-640002 | COVER ASSEMBLY | 1 |
| 5 | XBHHH | 80063 | SM-D-633301 | PANEL ASSEMBLY,REAR UOC:BB6 | 1 |
| 5 | XBHHH | 80063 | SM-D-640004 | PANEL ASSEMBLY,REAR UOC:3JQ | 1 |
| 6 | XBHHH | 80063 | SM-B-640042 | PLATE ASSY,DC OUT | 1 |
| 7 | XBHHH | 80063 | SM-C-640067 | PLATE | 1 |
| 8 | XBHZZ | 80063 | SM-B-640177 | CABLE CLAMP,MOD | 2 |
| 9 | XBHZZ | 80063 | SM-D-640157 | BOTTOM | 1 |
| 10 | XBHHH | 80063 | SM-C-633306 | PANEL ASSY,RIGHT UOC:BB6 | 1 |
| 10 | XBHHH | 80063 | SM-C-640016 | PANEL ASSEMBLY UOC:3JQ | 1 |

END OF FIGURE



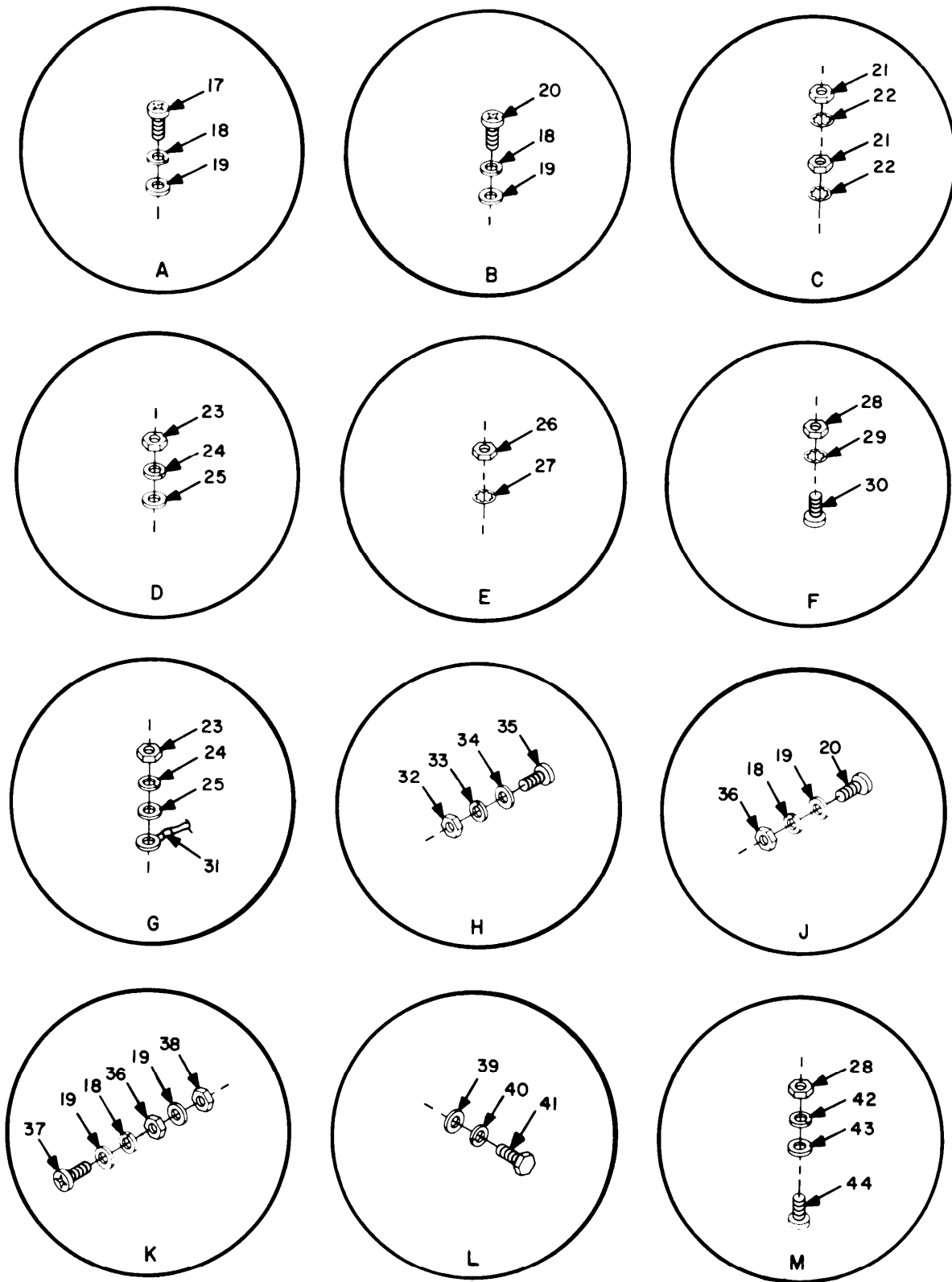
EL2XK023

Figure 2. Power supply PP-4763/GRC and PP-4763A/GRC, parts location (Sheet 1 of 4).



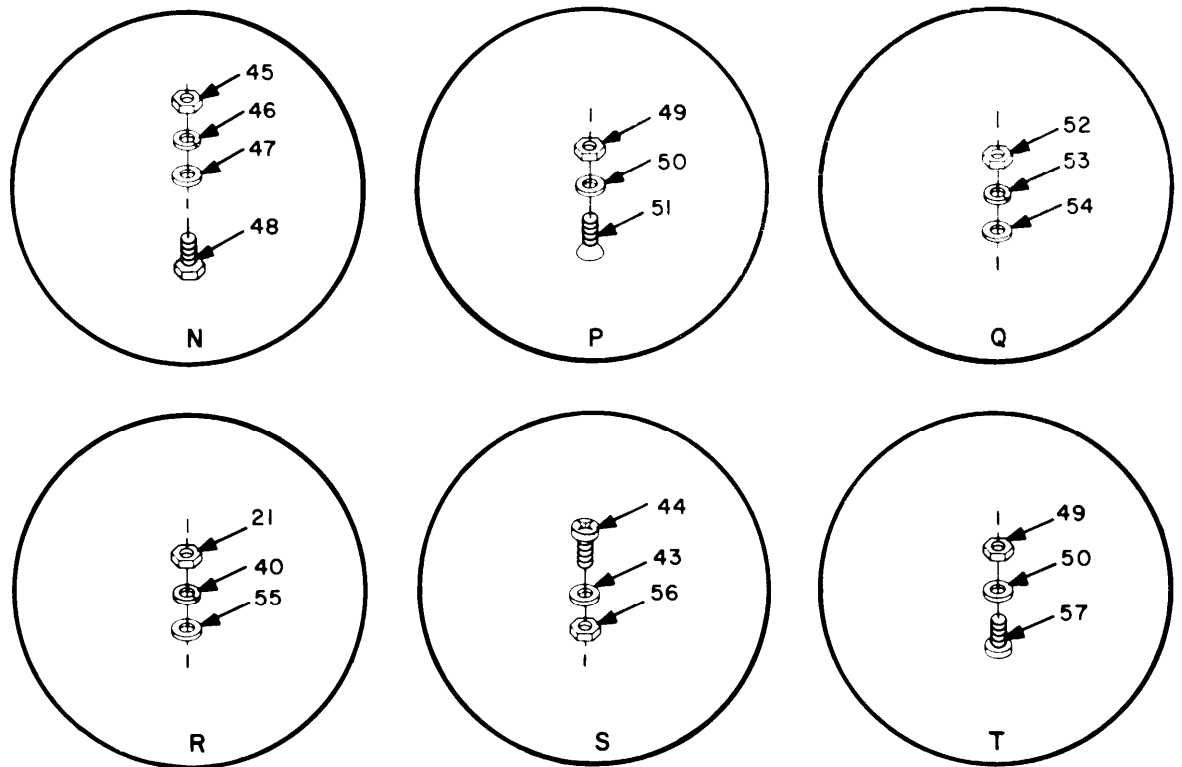
EL2XK024

Figure 2. Power supply PP-4763/GRC and PP-4763A/GRC, parts location (Sheet 2 of 4).



EL2XK025

Figure 2. Power supply PP-4763/GRC and PP-4763A/GRC, parts location (Sheet 3 of 4).



EL2XK026

Figure 2. Power supply PP-4763/GRC and PP-4763/GRC) parts location (Sheet 4 of 4).

SECTION II

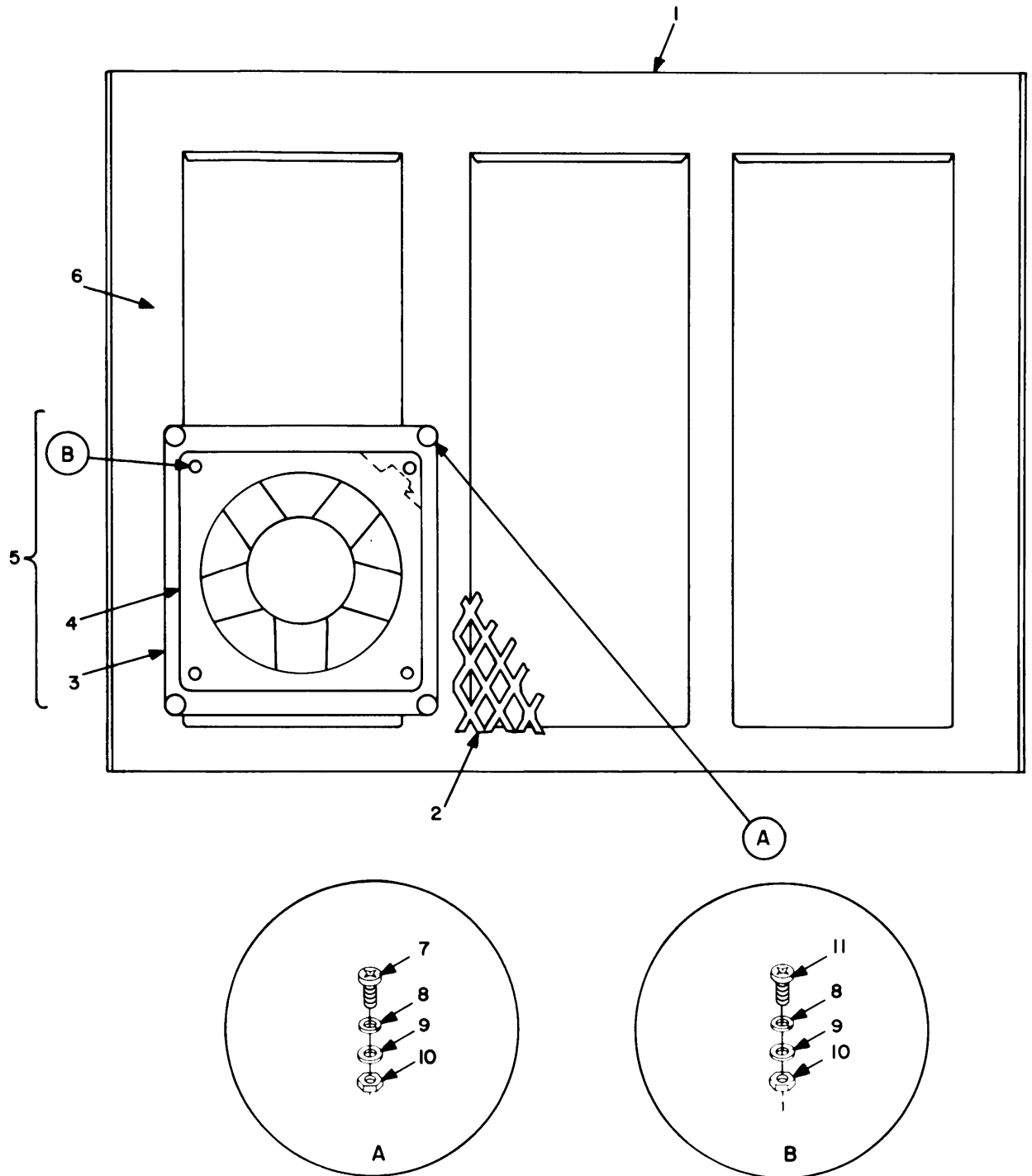
TM11-5820-765-34P-1

| (1) ITEM NO | (2) SMR CODE | (3) FSCM | (4) PART NUMBER | (5) DESCRIPTION AND USABLE ON CODE (UOC) | (6) QTY |
|-------------------|--------------------|-------------|-----------------------|---|------------|
| | | | | GROUP 00 POWER SUPPLY PP-4763/GRC AND PP-4763A/GRC PARTS LOCATION | |
| | | | | FIGURE 2 | |
| 1 | XBHHH | 80063 | SM-D-633317 | WIRING HARNESS UOC:BB6 | 1 |
| 1 | XBHZZ | 80063 | SM-D-640033 | WIRING HARNESS UOC:3JQ | 1 |
| 2 | PAHZZ | 80063 | SM-C-640155 | RESISTOR, FIXED, WIRE | 1 |
| 3 | XBHZZ | 06383 | SSC2 | CABLE TIE UOC:BB6 | 1 |
| 4 | XBHHH | 80063 | SM-D-633315 | WIRING HARNESS UOC:BB6 | 1 |
| 4 | XBHZZ | 80063 | SM-C-640034 | WIRING HARNESS UOC:3JQ | 1 |
| 5 | XBHHH | 80063 | SM-C-633320 | FRAME AND SWITCH UOC:BB6 | 1 |
| 5 | XBHZZ | 80063 | SM-D-640049 | FRAME ASSEMBLY UOC:3JQ | 1 |
| 6 | XBHZZ | 80063 | ES-C-202264 | SKID UOC:BB6 | 2 |
| 7 | PAHZZ | 96906 | MS21044C06 | NUT, SELF-LOCKING, HE UOC:3JQ | 1 |
| 9 | PAHZZ | 88044 | AN960-10 | WASHER, FLAT UOC:3JQ | 41 |
| 10 | PAFHH | 80063 | SM-D-633353 | CIRCUIT CARD ASSEMB UOC:BB6 | 1 |
| 10 | PAFHZ | 80063 | SM-D-640159 | CIRCUIT CARD ASSEMB UOC:3JQ | 1 |
| 11 | PAHZZ | 80063 | SM-B-633361 | INSULATOR, BUSHING UOC:BB6 | 1 |
| 12 | XBHZZ | 80063 | SM-B-633362 | PLATE, INSULATOR UOC:BB6 | 1 |
| 13 | XBHZZ | 80063 | SM-B-633363 | STRAP, RETAINING UOC:BB6 | 1 |
| 14 | XBHZZ | 80063 | SM-B-640045 | INSULATION SLEEVING | 1 |
| 15 | XBHHH | 80063 | SM-B-640158 | CHAIN ASSEMBLY | 1 |
| 16 | XBHZZ | 80063 | SM-B-640180 | CHAIN WELDLESS | 1 |
| 17 | PAHZZ | 96906 | MS51958-65 | SCREW, MACHINE | 27 |
| 18 | PAHZZ | 96906 | MS35338-138 | WASHER, LOCK | 40 |
| 19 | PAHZZ | 96906 | AN960C10L | WASHER, FLAT | 42 |
| 20 | PAHZZ | 96906 | MS51958-64 | SCREW, MACHINE | 19 |
| 21 | PAHZZ | 96906 | MS51969-1 | NUT, PLAIN, HEXAGON | 1 |
| 22 | PAHZZ | 96906 | MS35335-89 | WASHER, LOCK UOC:BB6 | 3 |
| 23 | PAHZZ | 80063 | SM-A-977601-305 | NUT, PLAIN, HEXAGON UOC:BB6 | 8 |
| 24 | PAFZZ | 80063 | SM-A-977602-100 | WASHER, LOCK UOC:BB6 | 8 |

SECTION II TM11-5820-765-34P-1

| (1) ITEM NO | (2) SMR CODE | (3) FSCM | (4) PART NUMBER | (5) DESCRIPTION AND USABLE ON CODE (UOC) | (6) QTY |
|-------------------|--------------------|-------------|-----------------------|---|------------|
| 25 | XDHZZ | 88044 | AN961-10T | WASHER, FLAT | 4 |
| 26 | PAHZZ | 96906 | MS35690-402 | NUT, PLAIN, HEXAGON UOC: 3JQ | 5 |
| 27 | PAHZZ | 96906 | MS35335-75 | WASHER, LOCK UOC: 3JQ | 4 |
| 28 | PAHZZ | 96906 | MS35649-284 | NUT, PLAIN, HEXAGON | 11 |
| 29 | PAHZZ | 96906 | MS35333-107 | WASHER, LOCK UOC: 3JQ | 2 |
| 30 | XBHZZ | 73734 | 28220 | SCREW, MACHINE UOC: 3JQ | 1 |
| 31 | PAFZZ | 80063 | SM-B-640107 | CABLE ASSEMBLY, POWE | 1 |
| 32 | XAHZZ | 80063 | SM-A-977599-245 | NUT, PLAIN, HEXAGON UOC: BB6 | 2 |
| 33 | XAHZZ | 80063 | SM-A-977602-97 | WASHER, LOCK UOC: BB6 | 2 |
| 34 | XAHZZ | 88044 | AN961-4T | WASHER, FLAT UOC: BB6 | 2 |
| 35 | XAHZZ | 80063 | SM-A-977598-215 | SCREW, MACHINE UOC: BB6 | 2 |
| 36 | PAHZZ | 96906 | MS35650-304 | NUT, PLAIN, HEXAGON | 16 |
| 37 | PAHZZ | 96906 | MS51958-66 | SCREW, MACHINE UOC: BB6 | 2 |
| 38 | PAHZZ | 96906 | MS21044C3 | NUT, SELF-LOCKING, HE | 3 |
| 39 | PAHZZ | 88044 | AN960-416 | WASHER, FLAT | 6 |
| 40 | PAHZZ | 96906 | MS35338-139 | WASHER, LOCK | 6 |
| 41 | PAHZZ | 96906 | MS35307-305 | SCREW, CAP, HEXAGON H | 6 |
| 42 | PAHZZ | 96906 | MS35338-137 | WASHER, LOCK | 6 |
| 43 | PAHZZ | 88044 | AN960C8 | WASHER, FLAT | 8 |
| 44 | PAHZZ | 96906 | MS51958-45 | SCREW, MACHINE | 8 |
| 45 | PAHZZ | 96906 | MS35649-2314 | NUT, PLAIN, HEXAGON UOC: BB6 | 8 |
| 46 | PAHZZ | 96906 | MS35338-140 | WASHER, LOCK UOC: BB6 | 8 |
| 47 | PAHZZ | 88044 | AN960C516 | WASHER, FLAT UOC: BB6 | 8 |
| 48 | PAHZZ | 96906 | MS35307-336 | BOLT, MACHINE UOC: BB6 | 8 |
| 49 | PAHZZ | 96906 | MS21044C04 | NUT, SELF-LOCKING, HE | 2 |
| 50 | PAHZZ | 96906 | MS15795-804 | WASHER, FLAT | 2 |
| 51 | PAHZZ | 96906 | MS51959-17 | SCREW, MACHINE | 1 |
| 52 | PAHZZ | 96906 | MS35649-262 | NUT, PLAIN, HEXAGON | 1 |
| 53 | PAHZZ | 96906 | MS35338-41 | WASHER, LOCK UOC: BB6 | 1 |
| 54 | PAHZZ | 88044 | AN961-6T | WASHER, FLAT | 1 |
| 55 | XAHZZ | 88044 | AN961-416T | WASHER, FLAT UOC: BB6 | 1 |
| 56 | PAHZZ | 96906 | MS21044C08 | NUT, SELF-LOCKING, HE UOC: BB6 | 2 |
| 57 | PAHZZ | 96906 | MS51957-15 | SCREW, MACHINE UOC: BB6 | 1 |

END OF FIGURE



EL2XK027

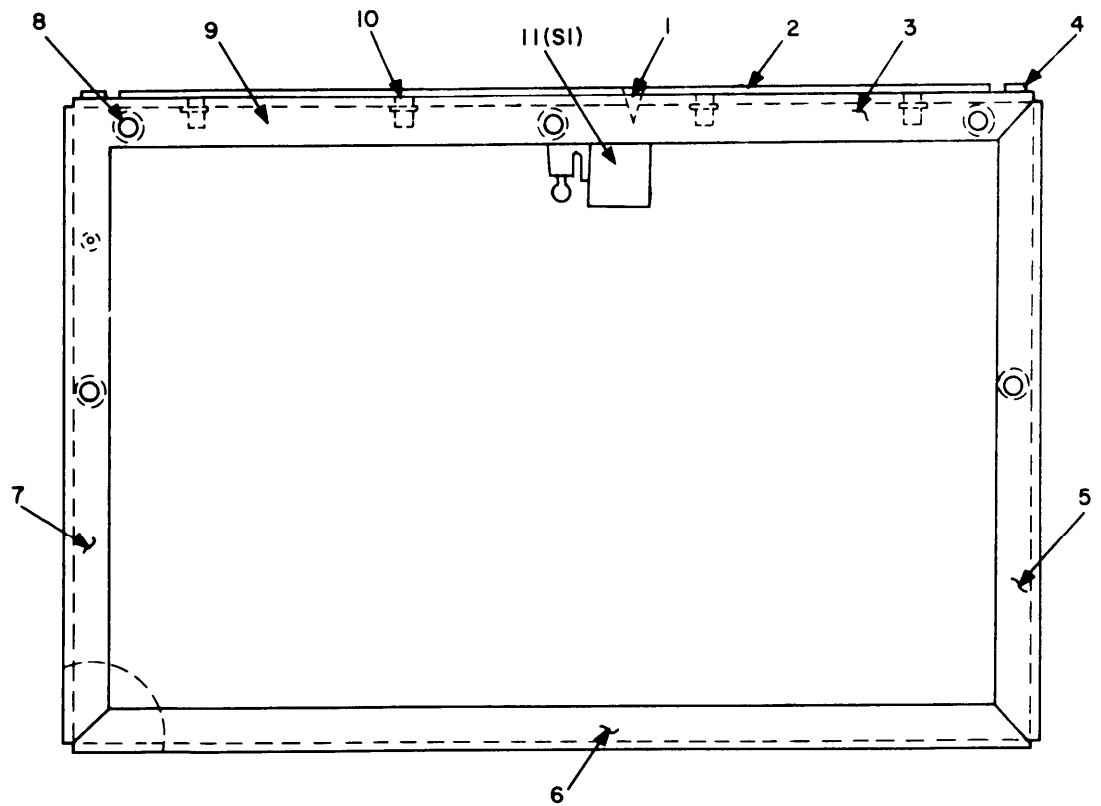
Figure 3. Power supply PP-4763/GRC and PP-4763A/GRC, cover assembly.

SECTION II

TM11-5820-765-34P-1

| (1) ITEM NO | (2) SMR CODE | (3) FSCM | (4) PART NUMBER | (5) DESCRIPTION AND USABLE ON CODE (UOC) | (6) QTY |
|-------------------|--------------------|-------------|-----------------------|---|------------|
| | | | | GROUP 00 POWER SUPPLY PP-4763/GRC AND PP-4763A/GRC COVER ASSEMBLY | |
| | | | | FIGURE 3 | |
| 1 | XBHHH | 80063 | SM-D-640047 | COVER | 1 |
| 2 | XBHZZ | 80063 | SM-B-640134 | SCREEN, EXPANDED | 1 |
| 3 | XBHZZ | 80063 | SM-C-640071 | BRACKET, FAN | 1 |
| 4 | PAFZZ | 80063 | SM-C-640093 | FAN, TUBE AXIAL | 1 |
| 5 | PAHHH | 80063 | SM-C-640003 | FAN, ASSEMBL | 1 |
| 6 | XBHZZ | 80063 | SM-D-640047-1 | COVER | 1 |
| 7 | PAHZZ | 96906 | MS51957-32 | SCREW, MACHINE | 4 |
| 8 | PAHZZ | 96906 | MS35338-136 | WASHER, LOCK | 8 |
| 9 | PAHZZ | 96906 | MS15795-806 | WASHER, FLAT | 8 |
| 10 | PAHZZ | 96906 | MS35649-264 | NUT, PLAIN, HEXAGON | 8 |
| 11 | PAHZZ | 96906 | MS51957-31 | SCREW, MACHINE | 4 |

END OF FIGURE



EL2XK028

Figure 4. Power supply PP-4763/GRC and PP-4763A/GRC, frame and switch assembly.

SECTION II

TM11-5820-765-34P-1

| (1) ITEM NO | (2) SMR CODE | (3) FSCM | (4) PART NUMBER | (5) DESCRIPTION AND USABLE ON CODE (UOC) | (6) QTY |
|-------------------|--------------------|-------------|-----------------------|--|------------|
| | | | | GROUP 00 POWER SUPPLY PP-4763/GRC AND PP-4763A/GRC FRAME AND SWITCH ASSEMBLY | |
| | | | | FIGURE 4 | |
| 1 | PAHZZ | 96906 | MS24693C27 | SCREW,MACHINE UOC:BB6 | 2 |
| 2 | XBHZZ | 80063 | SM-B-633329 | SPACER UOC:BB6 | 1 |
| 3 | XBHZZ | 80063 | SM-C-633330 | ANGLE, TOP UOC:BB6 | 1 |
| 4 | XBHZZ | 03481 | A10-130 | NUT, PLAIN, BLIND RIV UOC:BB6 | 2 |
| 5 | XAHZZ | 80063 | SM-C-640083-1 | ANGLE, SIDE UOC:BB6 | 1 |
| 6 | XAHZZ | 80063 | SM-C-640082 | ANGLE, BOTTOM UOC:BB6 | 1 |
| 7 | XBHZZ | 80063 | SM-C-640083-2 | ANGLE, SIDE UOC:BB6 | 1 |
| 8 | XBHZZ | 80063 | SM-B-640113 | FASTENER, FLUSH UOC:BB6 | 5 |
| 9 | XBHHH | 80063 | SM-D-633319 | FRAME ASSEMBLY UOC:BB6 | 1 |
| 10 | XBHZZ | 03481 | A10-230 | RIVNUT UOC:BB6 | 4 |
| 11 | PAHZZ | 96906 | MS16106-1 | SWITCH, SENSITIVE UOC:BB6 | 1 |

END OF FIGURE

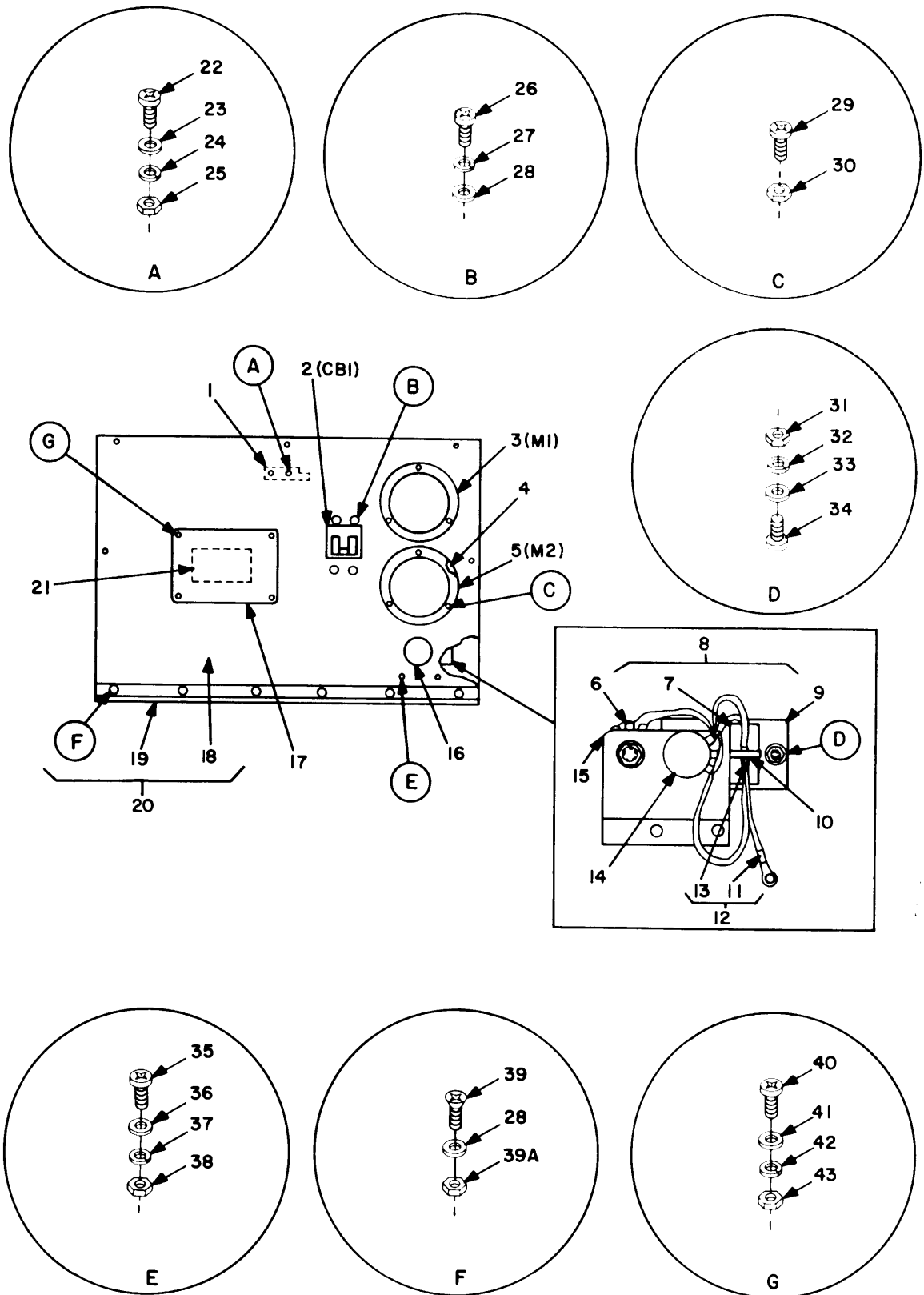


Figure 5. Power supply PP-4763/GRC and PP-4763A/GRC, front panel assembly.

SECTION II

TM11-5820-765-34P-1

| (1) ITEM NO | (2) SMR CODE | (3) FSCM | (4) PART NUMBER | (5) DESCRIPTION AND USABLE ON CODE (UOC) | (6) QTY |
|-------------------|--------------------|-------------|-----------------------|--|------------|
| | | | | GROUP 00 POWER SUPPLY PP-4763/GRC AND PP4763A/GRC FRONT PANEL ASSEMBLY | |
| | | | | FIGURE 5 | |
| 1 | XBHZZ | 80063 | SM-B-633360 | BRACKET,RETAIN UOC:BB6 | 1 |
| 2 | PAFZZ | 81541 | APL53-518-1 | CIRCUIT BREAKER UOC:BB6 | 1 |
| 2 | XBHZZ | 74193 | AM12MG3-25-77 | CIRCUIT BREAKER UOC:3JQ | 1 |
| 3 | PAHZZ | 81349 | MR36W080DCAAR | AMMETER | 1 |
| 4 | PAHZZ | 06045 | A05517005 | GASKET,METER UOC:3JQ | 2 |
| 5 | PAHZZ | 81349 | MR36W050DCVVR | VOLTMETER | 1 |
| 6 | PAHZZ | 81349 | RA20LASB103A | RESISTOR,VARIABLE,W | 1 |
| 7 | XBHZZ | 81349 | CQ09A1MB475K3 | CAPACITOR,FXD,PAPER UOC:BB6 | 1 |
| 8 | XBHHH | 80063 | SM-B-633351 | TERMINAL BOARD | 1 |
| 8 | PAHZZ | 80063 | SM-D-640014 | TERMINAL BOARD UOC:3JQ | 1 |
| 9 | XBHZZ | 80063 | SM-B-633326 | INSULATOR UOC:BB6 | 1 |
| 10 | XBHZZ | 80063 | SM-B-640137 | CABLE TIE UOC:BB6 | 1 |
| 11 | XBHZZ | 80063 | SM-B-640048-2 | TERMINAL,LUG | 1 |
| 12 | XBHZZ | 80063 | SM-B-640015 | RESISTOR ASSEMBLY | 1 |
| 13 | XBHZZ | 81349 | M22684-02-0118 | RESISTOR,FIXED,FILM | 1 |
| 14 | PAHZZ | 81349 | RA20LASB502A | RESISTOR,VARIABLE,W | 1 |
| 14 | XBHHH | 80063 | SM-D-640014 | TERMINAL BOARD UOC:3JQ | 1 |
| 15 | XBHZZ | 80063 | SM-B-640072 | BRACKET | 1 |
| 16 | XBHZZ | 80063 | SM-B-640069 | COVER | 1 |
| 17 | XBHZZ | 80063 | SM-B-633335 | PLAT | 1 |
| 18 | XBHZZ | 80063 | SM-D-633323 | PANEL-FRONT UOC:BB6 | 1 |
| 19 | XBHZZ | 80063 | SM-B-640064 | HINGE,BUTT | 1 |
| 20 | XBHHH | 80063 | SM-B-633318 | PANEL ASSEMBL UOC:BB6 | 1 |
| 21 | XBHZZ | 80063 | SM-B-633359 | MARKE UOC:BB6 | 1 |
| 22 | PAHZZ | 96906 | MS51957-45 | SCREW,MACHINE UOC:BB6 | 2 |
| 23 | PAHZZ | 88044 | AN960C8 | WASHER,FLAT UOC:BB6 | 2 |
| 24 | PAHZZ | 96906 | MS35338-137 | WASHER,LOCK UOC:BB6 | 2 |
| 25 | PAHZZ | 96906 | MS35649-284 | NUT,PLAIN,HEXAGON UOC:BB6 | 2 |
| 26 | PAHZZ | 96906 | MS51959-28 | SCREW,MACHINE | 4 |

SECTION II

TM11-5820-765-34P-1

| (1) ITEM NO | (2) SMR CODE | (3) FSCM | (4) PART NUMBER | (5) DESCRIPTION AND USABLE ON CODE (UOC) | (6) QTY |
|-------------------|--------------------|-------------|-----------------------|---|------------|
| 27 | PAHZZ | 96906 | MS35338-136 | WASHER, LOCK UOC:BB6 | 4 |
| 28 | PAHZZ | 96906 | MS15795-806 | WASHER, FLAT | 10 |
| 29 | PAHZZ | 96906 | MS35206-232 | SCREW, MACHINE | 5 |
| 30 | PAHZZ | 96906 | MS21044C06 | NUT, SELF-LOCKING, HE | 11 |
| 31 | PAHZZ | 96906 | MS35650-305T | NUT, PLAIN, HEXAGON | 2 |
| 32 | XBFZZ | 96906 | MS35338-100 | WASHER, LOCK | 2 |
| 33 | XDHZZ | 88044 | AN961-10T | WASHER, FLAT | 2 |
| 34 | PAHZZ | 80063 | SM-A-977600-268 | SCREW, MACHINE | 1 |
| 35 | PAHZZ | 96906 | MS51958-63 | SCREW, MACHINE | 2 |
| 36 | PAHZZ | 88044 | AN960C10L | WASHER, FLAT | 2 |
| 37 | PAHZZ | 96906 | MS35338-138 | WASHER, LOCK | 2 |
| 38 | PAHZZ | 96906 | MS35650-304 | NUT, PLAIN, HEXAGON UOC:BB6 | 2 |
| 39 | PAHZZ | 96906 | MS24693C27 | SCREW, MACHINE | 6 |
| 39A | PAHZZ | 96906 | MS21044C06 | NUT, SELF-LOCKING, HE | 6 |
| 40 | PAHZZ | 96906 | MS51957-15 | SCREW, MACHINE | 4 |
| 41 | PAHZZ | 96906 | MS15795-804 | WASHER, FLAT | 4 |
| 42 | PAHZZ | 96906 | MS35338-135 | WASHER, LOCK | 4 |
| 43 | PAHZZ | 96906 | MS35649-244 | NUT, PLAIN, HEXAGON | 4 |

END OF FIGURE

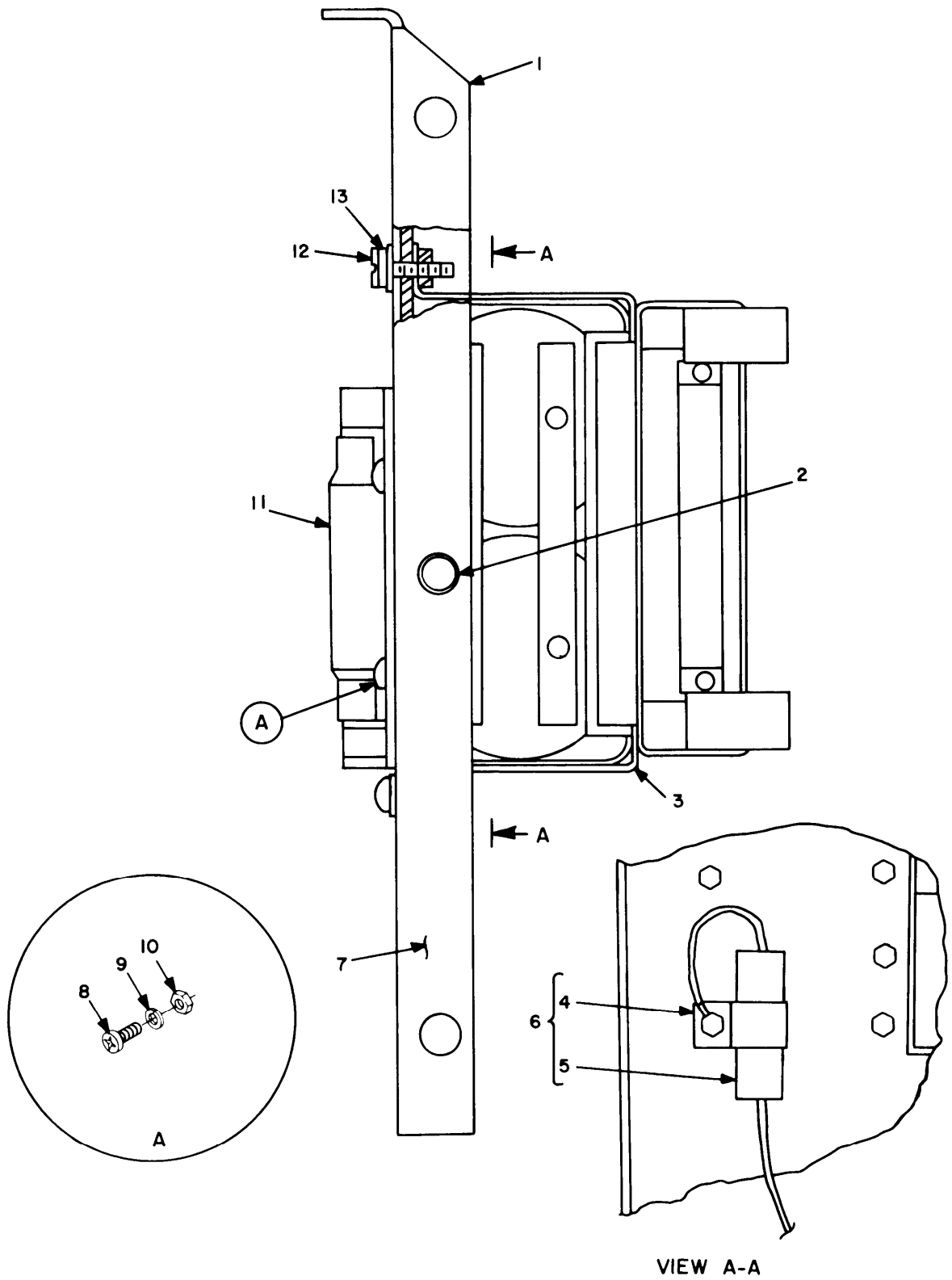


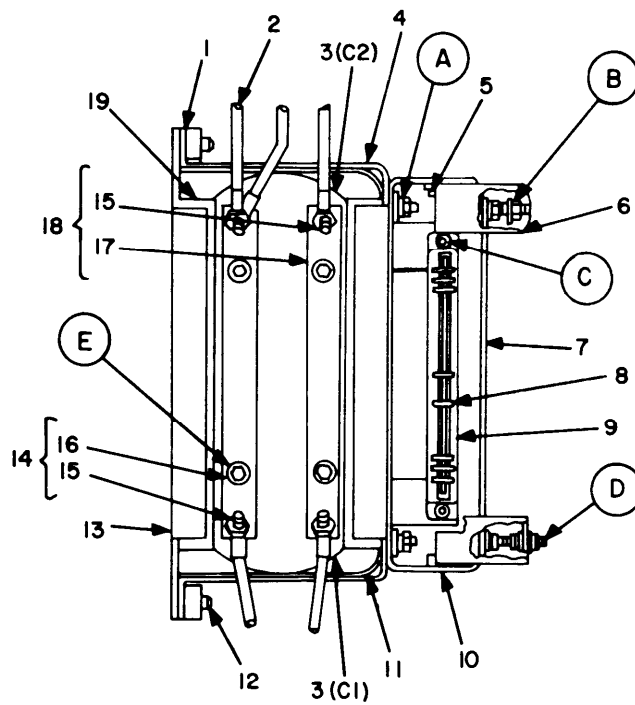
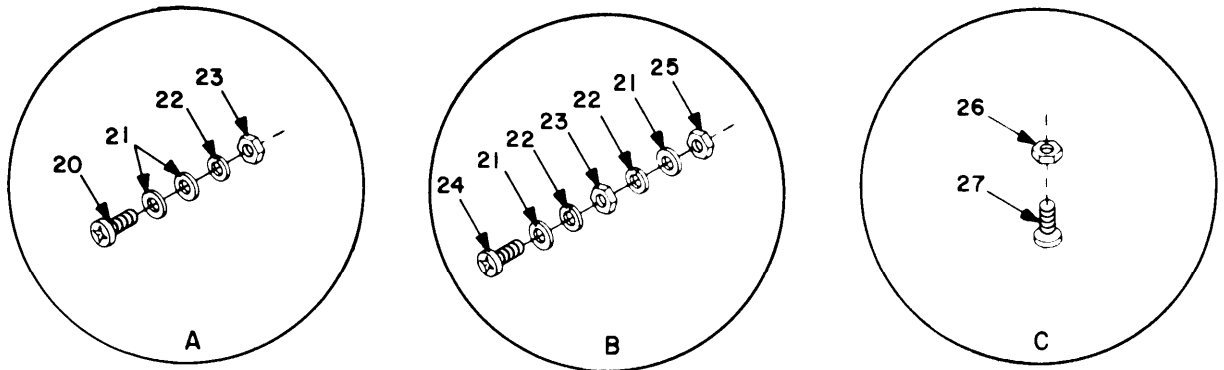
Figure 6. Power supply PP-4763/GRC and PP-4763A/GRC, left panel assembly.

SECTION II

TM11-5820-765-34P-1

| (1) ITEM NO | (2) SMR CODE | (3) FSCM | (4) PART NUMBER | (5) DESCRIPTION AND USABLE ON CODE (UOC) | (6) QTY |
|-------------------|--------------------|-------------|-----------------------|--|------------|
| | | | | GROUP 00 POWER SUPPLY PP-4763/GRC AND PP-4763A/GRC LEFT PANEL ASSEMBLY | |
| | | | | FIGURE 6 | |
| 1 | XBHHH | 80063 | SM-D-633333 | PANEL, LEFT UOC:BB6 | 1 |
| 1 | XBHZZ | 80063 | SM-D-640092 | PANEL, LEFT UOC:3JQ | 1 |
| 2 | XBHZZ | 03481 | A10-130 | NUT, PLAIN, BLIND RIV UOC:BB6 | 1 |
| 3 | XBHHH | 80063 | SM-C-640019 | CAPACITOR ASSEMBLY | 1 |
| 4 | PAHZZ | 96906 | MS25036-103 | TERMINAL, LUG UOC:BB6 | 1 |
| 5 | PAHZZ | 81349 | CP12A1KC474K | CAPACITOR UOC:BB6 | 1 |
| 6 | PAHZZ | 80063 | SM-B-977605 | CAPACITOR ASSY, MOD UOC:BB6 | 1 |
| 7 | XBHZZ | 80063 | SM-D-633333-1 | PANEL UOC:BB6 | 1 |
| 8 | PAHZZ | 96906 | MS51958-64 | SCREW, MACHINE | 5 |
| 9 | PAHZZ | 96906 | MS35338-138 | WASHER, LOCK | 9 |
| 10 | PAHZZ | 96906 | MS35650-304 | NUT, PLAIN, HEXAGON | 5 |
| 11 | PAHZZ | 96906 | MS18012-5 | HANDLE, BAIL | 1 |
| 12 | PAHZZ | 96906 | MS51958-65 | SCREW, MACHINE | 4 |
| 13 | PAHZZ | 88044 | AN960C10L | WASHER, FLAT | 9 |

END OF FIGURE



CAPACITOR ASSEMBLY

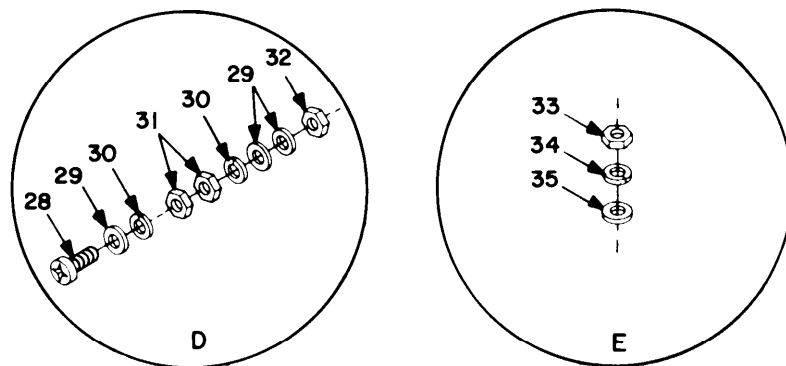
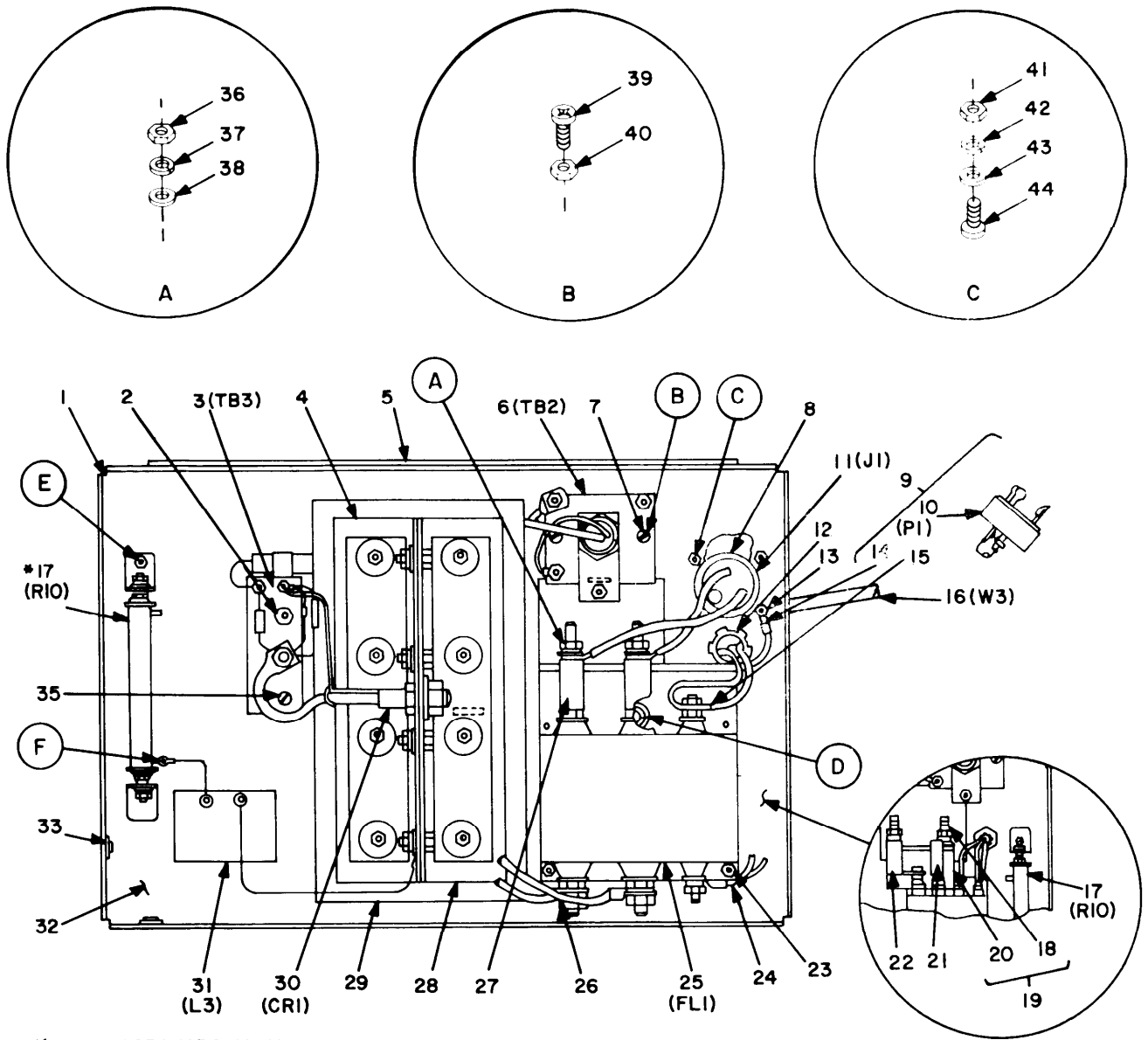


Figure 7. Power supply PP-4763/GRC and PP-4763A/GRC, left panel subassembly.

| (1) ITEM NO | (2) SMR CODE | (3) FSCM | (4) PART NUMBER | (5) DESCRIPTION AND USABLE ON CODE (UOC) | (6) QTY |
|---|--------------------|-------------|-----------------------|---|------------|
| GROUP 00 POWER SUPPLY PP-4763/GRC AND PP-4763A/GRC LEFT PANEL SUBASSEMBLY | | | | | |
| FIGURE 7 | | | | | |
| 1 | XBHZZ | 80063 | SM-B-640127 | BAR,CAPACITOR | 2 |
| 2 | PAHZZ | 80063 | SM-D-640037 | WIRING HARNESS | 1 |
| 3 | XBHZZ | 80063 | SM-B-633372 | CAPACITOR, FIXED, ELE UOC:BB6 | 2 |
| 4 | XBHZZ | 80063 | SM-D-640124 | CASE,CAPACITOR | 1 |
| 5 | PAHZZ | 80063 | SM-B-640135 | HOLDER,CIRCUIT BOAR | 2 |
| 6 | XBHZZ | 80063 | SM-B-640128 | BRACKET | 2 |
| 7 | XBHZZ | 80063 | SM-C-640123 | PLATE,BAFFLE | 1 |
| 8 | PAHZZ | 71468 | 60-6007-48-28 | KEY,POLARIZING | 1 |
| 9 | PAHZZ | 04013 | 30-40 | GUIDE,CARD | 1 |
| 10 | XBHZZ | 80063 | SM-C-640122 | CASE,CAPACITOR | 1 |
| 11 | XBHZZ | 80063 | SM-B-640130 | INSULATOR | 1 |
| 12 | PAHZZ | 96906 | MS24693C272 | SCREW,MACHINE | 2 |
| 13 | XBHZZ | 80063 | SM-C-640125 | PLATE CAPACITOR | 1 |
| 14 | XBHZZ | 80063 | SM-B-640020 | BUS BAR ASSEMBLY | 1 |
| 15 | PAHZZ | 80063 | SM-B-640120-2 | SCREW, SHOULDER | 4 |
| 16 | XBHZZ | 80063 | SM-B-640129-1 | BUS BAR | 1 |
| 17 | XBHZZ | 80063 | SM-B-640129-2 | BUS BAR | 1 |
| 18 | XBHZZ | 80063 | SM-B-640021 | BUS BAR ASSEMBLY | 1 |
| 19 | XBHZZ | 80063 | SM-B-640126 | INSULATOR | 1 |
| 20 | PAHZZ | 96906 | MS51958-63 | SCREW,MACHINE | 5 |
| 21 | PAHZZ | 88044 | AN960C10 | WASHER, FLAT | 10 |
| 22 | PAHZZ | 96906 | MS35338-138 | WASHER, LOCK | 7 |
| 23 | PAHZZ | 96906 | MS35650-304 | NUT, PLAIN, HEXAGON | 6 |
| 24 | PAHZZ | 96906 | MS51958-65 | SCREW,MACHINE UOC:BB6 | 1 |
| 25 | PAHZZ | 96906 | MS21044C3 | NUT, SELF-LOCKING, HE UOC:BB6 | 1 |
| 26 | PAHZZ | 96906 | MS21044C04 | NUT, SELF-LOCKING, HE | 2 |
| 27 | PAHZZ | 96906 | MS51957-17 | SCREW, MACHINE | 2 |
| 28 | PAHZZ | 96906 | MS51957-49 | SCREW, MACHINE | 2 |
| 29 | PAHZZ | 88044 | AN960C8 | WASHER, FLAT | 4 |
| 30 | PAHZZ | 96906 | MS35338-137 | WASHER, LOCK | 4 |
| 31 | PAHZZ | 96906 | MS35649-284 | NUT, PLAIN, HEXAGON | 4 |
| 32 | PAHZZ | 96906 | MS21044C08 | NUT, SELF-LOCKING, HE | 2 |
| 33 | PAHZZ | 96906 | MS35650-305 | NUT, PLAIN, HEXAGON UOC:BB6 | 4 |
| 34 | PAHZZ | 96906 | MS16214-21 | WASHER, LOCK | 4 |
| 35 | PAHZZ | 88044 | AN961-10 | WASHER, FLAT | 4 |

END OF FIGURE



*-PP-4763A/GRC ONLY.
ITEM 34 NOT USED.

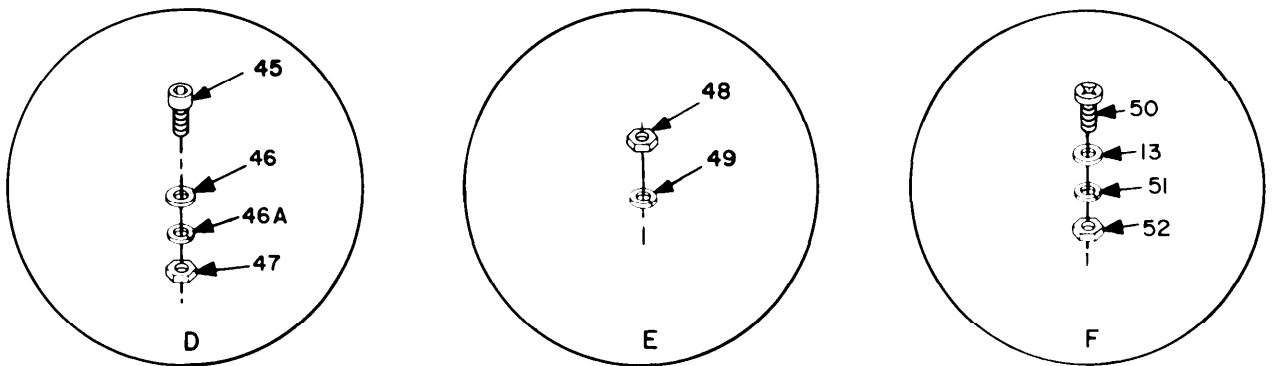


Figure 8. Power supply PP-4763/GRC and PP-4763A/GRC, rear panel internal view.

SECTION II

TM11-5820-765-34P-1

| (1) ITEM NO | (2) SMR CODE | (3) FSCM | (4) PART NUMBER | (5) DESCRIPTION AND USABLE ON CODE (UOC) | (6) QTY |
|---|--------------------|-------------|-----------------------|---|------------|
| GROUP 00 POWER SUPPLY PP-4763/GRC AND PP-4763A/GRC REAR PANEL INTERNAL VIEW | | | | | |
| FIGURE 8 | | | | | |
| 1 | XBHHH | 80063 | SM-D-633324 | PANEL, REAR UOC: BB6 | 1 |
| 1 | XBHZZ | 80063 | SM-D-640063 | PANEL, REAR UOC: 3JQ | 1 |
| 2 | PAHZZ | 80063 | SM-B-640140-1 | SPACER, SLEEVE | 2 |
| 3 | XBHHH | 80063 | SM-B-633302 | TERMINAL BOARD ASSY UOC: BB6 | 1 |
| 3 | PAHHH | 80063 | SM-B-640005 | TERMINAL BOARD UOC: 3JQ | 1 |
| 4 | XBHZZ | 80063 | SM-B-640056 | INSULATOR | 2 |
| 5 | XBHZZ | 80063 | SM-B-640156 | SPACER, INSERT, REAR UOC: BB6 | 1 |
| 6 | XBHHH | 80063 | SM-B-640009 | TERMINAL BOARD | 1 |
| 7 | PAHZZ | 80063 | SM-B-640140-2 | SPACER, SLEEVE | 2 |
| 8 | XBHZZ | 96906 | MS25043-22C | COVER, ELECTRICAL UOC: BB6 | 1 |
| 9 | XBHHH | 80063 | SM-B-633342 | CABLE ASSY, PWR, ELEC UOC: BB6 | 1 |
| 9 | PAHHH | 81861 | 6700-0282-0006 | CABLE ASSEMBLY, UOC: 3JQ | 1 |
| 10 | PAHZZ | 74545 | 3331 | CONNECTOR, PLUG, ELEC UOC: BB6 | 1 |
| 11 | PAHZZ | 96906 | MS3102R22-2S | CONNECTOR, RECEPTACL UOC: BB6 | 1 |
| 12 | PAHZZ | 80063 | SM-B-640117 | CABLE CLAMP, MOD UOC: BB6 | 1 |
| 12 | XBHZZ | 80063 | SM-A-640040 | CLAMP, CABLE, STRAIN UOC: 3JQ | 1 |
| 13 | PAHZZ | 88044 | AN961-6T | WASHER, FLAT | 2 |
| 14 | PAHZZ | 96906 | MS25036-111 | TERMINAL, LUG UOC: BB6 | 1 |
| 15 | PAHZZ | 96906 | MS25036-112 | TERMINAL, LUG | 2 |
| 16 | XBHZZ | 81349 | C003H0F3-12-0625 | CABLE, ELECTRICAL UOC: BB6 | V |
| 16 | XBHZZ | 04946 | 703-28 | CABLE, POWER, UOC: 3JQ | V |
| 17 | XBHHH | 80063 | SM-B-633303 | RESISTOR ASSEMBLY UOC: BB6 | 1 |
| 17 | PAHHH | 80063 | SM-B-640011 | RESISTOR ASSEMBLY UOC: 3JQ | 1 |
| 18 | XBHZZ | 80063 | SM-A-977598-344 | SCREW, SPLINED | 2 |
| 19 | PAHZZ | 80063 | SM-B-633304 | PRINTED CIRCUIT BOA UOC: BB6 | 1 |
| 20 | XBHZZ | 80063 | SM-B-640066 | INSULATOR, MODIFIED UOC: 3JQ | 1 |

SECTION II

TM11-5820-765-34P-1

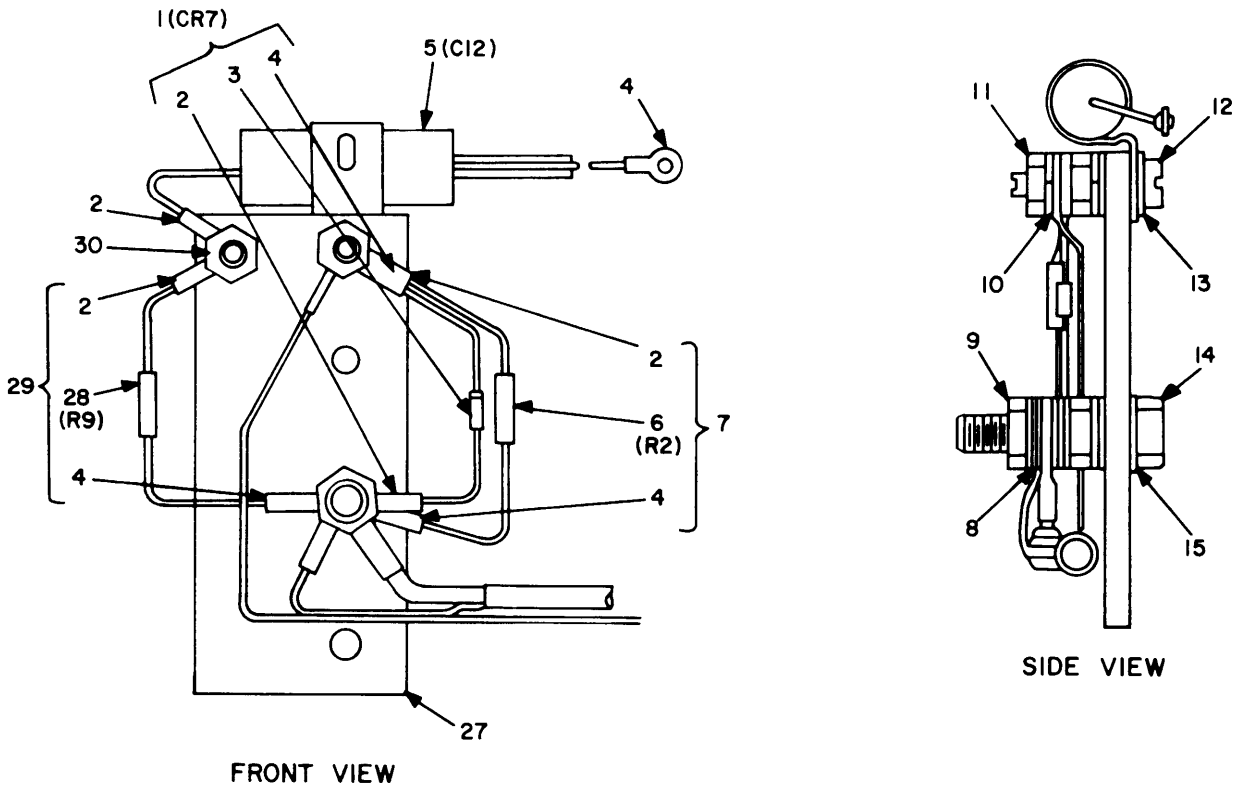
| (1) ITEM NO | (2) SMR CODE | (3) FSCM | (4) PART NUMBER | (5) DESCRIPTION AND USABLE ON CODE (UOC) | (6) QTY |
|-------------------|--------------------|-------------|-----------------------|---|------------|
| 20 | XBHZZ | 80063 | SM-B-633325 | INSULATOR, MODIFIED UOC: BB6 | 1 |
| 21 | XBHZZ | 80063 | SM-B-640051 | BUS, CONDUCTOR UOC: 3JQ | 1 |
| 22 | XBHZZ | 80063 | SM-B-640050 | BUS BAR UOC: 3JQ | 1 |
| 23 | PAHZZ | 96906 | MS51958-63 | SCREW, MACHINE UOC: BB6 | 9 |
| 24 | XBHZZ | 80063 | SM-B-640036 | WIRING HARNESS UOC: 3JQ | 1 |
| 25 | XBHZZ | 80063 | SM-D-633343 | FILTER, RF UOC: BB6 | 1 |
| 25 | PAHZZ | 02294 | GF7390-1 | FILTER, RADIO UOC: 3JQ | 1 |
| 26 | XBHHH | 80063 | SM-D-633316 | WIRING HARNESS UOC: BB6 | 1 |
| 26 | XBHZZ | 80063 | SM-B-640035 | WIRING HARNESS UOC: 3JQ | 1 |
| 27 | XBHZZ | 80063 | SM-B-633321 | BUS BAR UOC: BB6 | 2 |
| 28 | XBHZZ | 80063 | SM-C-640054 | HEAT SINK | 2 |
| 29 | PAHZZ | 80063 | SM-C-640057 | INSULATOR | 1 |
| 30 | PAHZZ | 81349 | JAN2N2027 | SEMICONDUCTOR DEVIC UOC: BB6 | 1 |
| 30 | XBHZZ | 80131 | 2N2026 | SEMICONDUCTOR DEVIC UOC: 3JQ | 6 |
| 31 | PAHZZ | 80063 | SM-C-633368 | REACTOR UOC: BB6 | 1 |
| 32 | XBHZZ | 80063 | SM-D-633324-1 | PANEL, REAR UOC: BB6 | 1 |
| 33 | XBHZZ | 03481 | A10-130 | NUT, PLAIN, BLIND RIV UOC: BB6 | 14 |
| 35 | PAHZZ | 96906 | MS51958-69 | SCREW, MACHINE | 2 |
| 36 | XBHZZ | 96906 | MS51969-1 | NUT, PLAIN, HEXAGON UOC: BB6 | 2 |
| 37 | PAHZZ | 96906 | MS35335-89 | WASHER, LOCK UOC: BB6 | 2 |
| 38 | XDHZZ | 88044 | AN961-416T | WASHER, FLAT | 8 |
| 39 | PAHZZ | 96906 | MS51958-70 | SCREW, MACHINE | 2 |
| 40 | PAHZZ | 96906 | MS35650-304 | NUT, PLAIN, HEXAGON | 3 |
| 41 | PAHZZ | 96906 | MS35649-244 | NUT, PLAIN, HEXAGON UOC: BB6 | 4 |
| 42 | PAHZZ | 96906 | MS35338-135 | WASHER, LOCK UOC: BB6 | 4 |
| 43 | PAHZZ | 96906 | MS15795-804 | WASHER, FLAT UOC: BB6 | 4 |
| 44 | XBHZZ | 96906 | MS51957-18 | SCREW, MACHINE UOC: BB6 | 4 |
| 45 | PAHZZ | 96906 | MS51958-66 | SCREW, MACHINE | 3 |
| 46 | PAHZZ | 88044 | AN960C10L | WASHER, FLAT UOC: BB6 | 20 |
| 47 | XBHZZ | 03481 | A10-230 | RIVNUT | 2 |

SECTION II

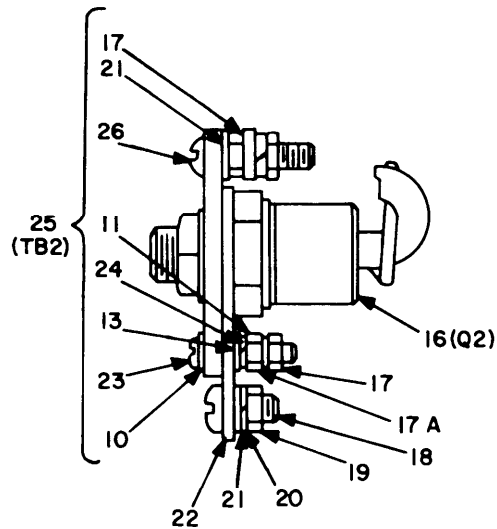
TM11-5820-765-34P-1

| (1) ITEM NO | (2) SMR CODE | (3) FSCM | (4) PART NUMBER | (5) DESCRIPTION AND USABLE ON CODE (UOC) | (6) QTY |
|-------------------|--------------------|-------------|-----------------------|---|------------|
| 48 | PAHZZ | 96906 | MS35650-302 | UOC:BB6 NUT, PLAIN, HEXAGON | 13 |
| 49 | PAHZZ | 96906 | MS35338-138 | WASHER, LOCK UOC:BB6 | 20 |
| 50 | XBHZZ | 80063 | SM-A-977598-228 | SCREW, MACHINE UOC:BB6 | 2 |
| 51 | PAHZZ | 96906 | MS35338-98 | WASHER, LOCK | 2 |
| 52 | XBHZZ | 80063 | SM-A-977599-265 | NUT, PLAIN, HEXAGON UOC:BB6 | 2 |

END OF FIGURE



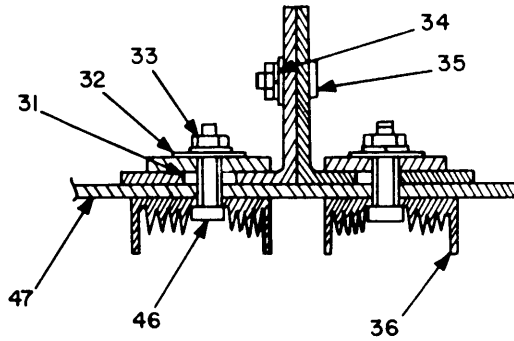
TERMINAL BOARD ASSEMBLY TB3



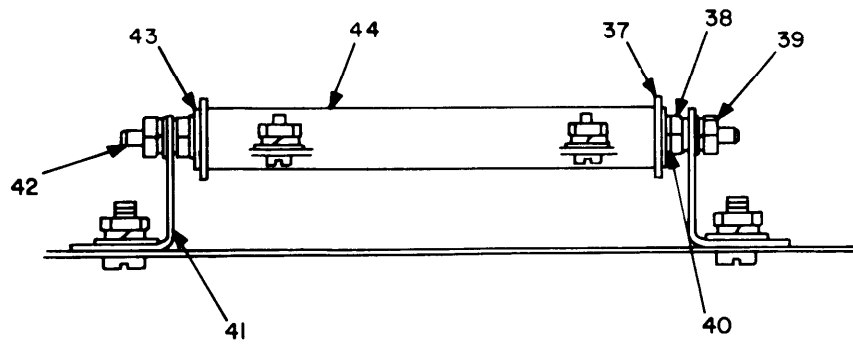
TERMINAL BOARD ASSEMBLY TB2

EL2XK033

Figure 9. Power supply PP-4763/GRC and PP-4763A/GRC, rear panel subassemblies (Sheet 1 of 2).



HEAT SINK ASSEMBLY



RESISTOR ASSEMBLY

NOTE ITEM 45 NOT USED

EL2XK034

Figure 9. Power supply PP-4763/GRC and PP-4763A/GRC, rear panel subassemblies (Sheet 2 of 2).

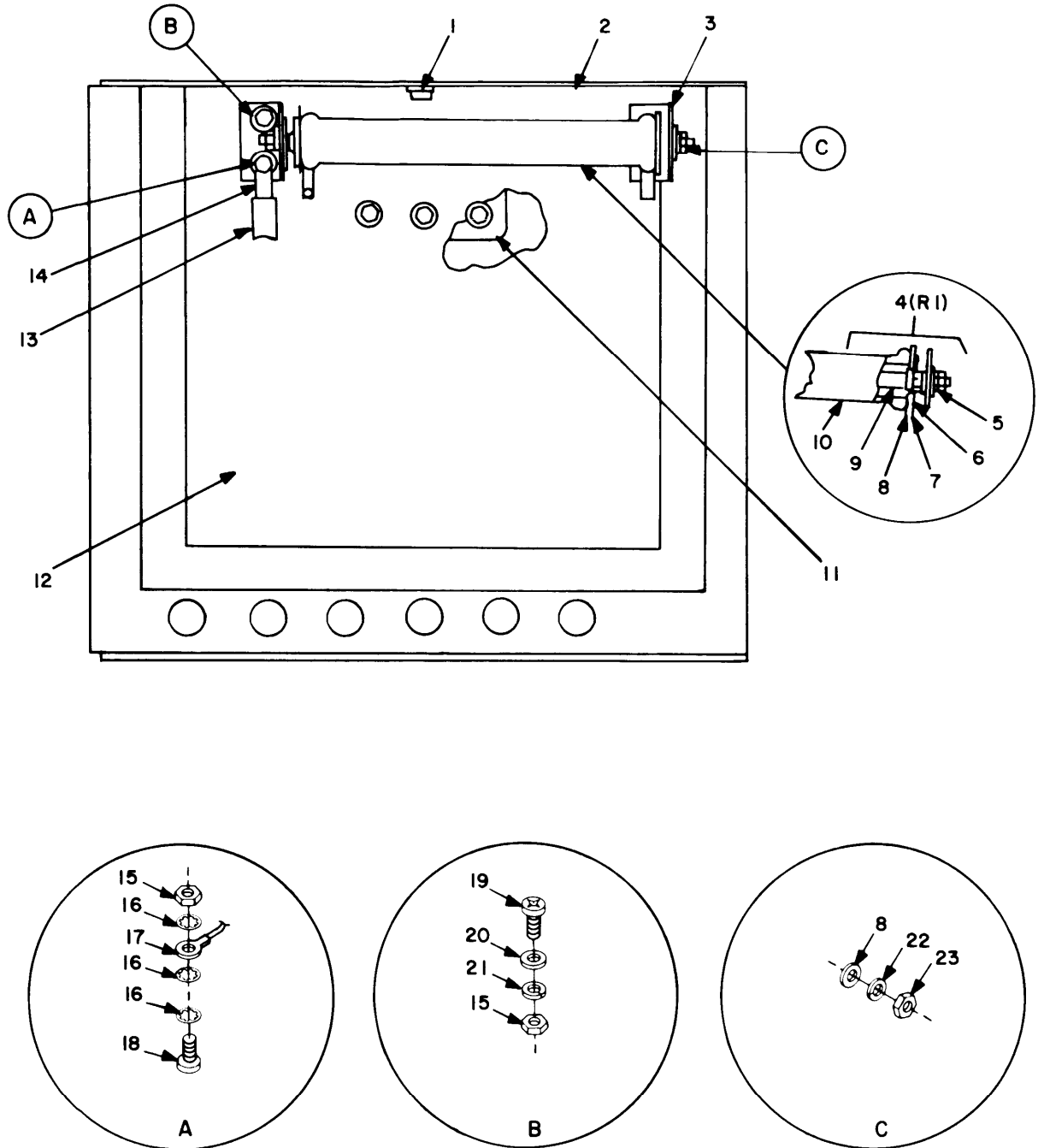
| (1) ITEM NO | (2) SMR CODE | (3) FSCM | (4) PART NUMBER | (5) DESCRIPTION AND USABLE ON CODE (UOC) | (6) QTY |
|---|--------------------|-------------|-----------------------|---|------------|
| GROUP 00 POWER SUPPLY PP-4763/GRC AND PP-4763A/GRC REAR PANEL SUBASSEMBLIES | | | | | |
| FIGURE 9 | | | | | |
| 1 | XBHZZ | 80063 | SM-B-640008 | SEMICONDUCTOR DEVIC | 1 |
| 2 | XBHZZ | 80063 | SM-B-640048-1 | TERMINAL, LUG | 1 |
| 3 | PAHZZ | 81349 | JAN1N3611 | SEMICONDUCTOR DEVIC UOC:BB6 | 1 |
| 3 | XBHZZ | 81349 | JAN1N3611 | SEMICONDUCTOR DEVIC UOC:3JQ | 1 |
| 4 | PAHZZ | 80063 | SM-B-640048-3 | TERMINAL, LUG UOC:BB6 | 1 |
| 5 | PAHZZ | 81349 | CP12A1KC474K | CAPACITOR, FIXED, PAP UOC:BB6 | 1 |
| 5 | PAHZZ | 96733 | 18M2474DG | CAPACITOR, FIXED, PAP UOC:3JQ | 1 |
| 6 | XBHZZ | 81349 | M22684-02-0036 | RESISTOR, FIXED, FILM | 1 |
| 7 | XBHZZ | 80063 | SM-B-640006 | RESISTOR ASSEMBLY | 1 |
| 8 | PAHZZ | 96906 | MS35335-89 | WASHER, LOCK | 2 |
| 9 | PAHZZ | 80063 | SM-A-977599-2255 | NUT, PLAIN, HEXAGON | 2 |
| 10 | PAHZZ | 96906 | MS35335-86 | WASHER, LOCK | 6 |
| 11 | PAHZZ | 96906 | MS35649-265T | NUT, PLAIN, HEXAGON UOC:BB6 | 4 |
| 12 | PAHZZ | 80063 | SM-A-977598-234 | SCREW, MACHINE | 1 |
| 13 | PAHZZ | 88044 | AN961-6T | WASHER, FLAT | 4 |
| 14 | PAHZZ | 80063 | SM-A-977598-285 | SCREW, CAP, HEXAGON H | 1 |
| 15 | XDHZZ | 88044 | AN961-416T | WASHER, FLAT | 3 |
| 16 | XBHZZ | 81349 | JAN2N1910W | SEMICONDUCTOR DEVIC | 1 |
| 17 | PAHZZ | 96906 | MS35650-305T | NUT, PLAIN, HEXAGON | 5 |
| 17A | PAHZZ | 96906 | MS36649-265T | WASHER, LOCK | 1 |
| 18 | PAHZZ | 80063 | SM-A-977600-263 | SCREW, MACHINE | 1 |
| 19 | XBHZZ | 96906 | MS36649-262 | NUT, PLAIN, HEXAGON | 1 |
| 20 | PAHZZ | 96906 | MS35338-100 | WASHER, LOCK | 3 |
| 21 | XDHZZ | 88044 | AN961-10T | WASHER, FLAT | 5 |
| 22 | PAHZZ | 80063 | SM-B-640119 | BUS BAR | 1 |
| 23 | PAHZZ | 96906 | MS35206-233 | SCREW, MACHINE | 1 |
| 24 | XBHZZ | 80063 | M111586-1 | INSULATOR UOC:3JQ | 1 |
| 25 | XBHHH | 80063 | SM-B-640010 | TERMINAL BOARD | 1 |
| 26 | PAHZZ | 80063 | SM-B-640120-1 | SCREW, SHOULDER | 2 |
| 27 | XBHZZ | 80063 | SM-B-633327 | INSULATOR, PLATE UOC:BB6 | 1 |
| 27 | XBHZZ | 80063 | SM-B-640075 | INSULATOR, PLATE UOC:3JQ | 1 |
| 28 | XBHZZ | 81349 | M22684-02-0010 | RESISTOR, FIXED, FILM | 1 |
| 29 | PAHHH | 80063 | SM-B-640007 | RESISTOR ASSEMBLY | 1 |
| 30 | PAHZZ | 80063 | SM-A-977598-232 | SCREW, MACHINE UOC:BB6 | 1 |
| 31 | PAHZZ | 80063 | SM-B-640074 | WASHER, NONMETALLIC | 8 |

SECTION II

TM11-5820-765-34P-1

| (1) ITEM NO | (2) SMR CODE | (3) FSCM | (4) PART NUMBER | (5) DESCRIPTION AND USABLE ON CODE (UOC) | (6) QTY |
|-------------------|--------------------|-------------|-----------------------|---|------------|
| 32 | XBHZZ | 80063 | SM-A-977604 | WASHER, FLAT | 8 |
| 33 | PAHZZ | 96906 | MS35649-2254 | NUT, PLAIN, HEXAGON | 12 |
| 34 | PAHZZ | 96906 | MS35338-139 | WASHER, LOCK | 8 |
| 35 | PAHZZ | 96906 | MS35307-306 | SCREW, CAP, HEXAGON H | 4 |
| 36 | PAHZZ | 80063 | SM-B-640065 | HEAT SINK UOC: 3JQ | 2 |
| 37 | PAHZZ | 63743 | 922N | INSULATOR, WASHER | 2 |
| 38 | PAHZZ | 96906 | MS21044C08 | NUT, SELF-LOCKING, HE | 2 |
| 39 | PAHZZ | 96906 | MS35649-284 | NUT, PLAIN, HEXAGON | 2 |
| 40 | PAHZZ | 88044 | AN960C8 | WASHER, FLAT | 4 |
| 41 | XBHZZ | 80063 | SM-B-640079 | BRACKET | 2 |
| 42 | XBHZZ | 80063 | SM-B-640154 | STUD, CONTINUOUS THR | 1 |
| 43 | XBHZZ | 44655 | 6001 | WASHER, SHIELDED UOC: BB6 | 2 |
| 44 | PAHZZ | 81349 | RW35V750 | RESISTOR, FIXED, WIRE UOC: BB6 | 1 |
| 44 | PAHZZ | 44655 | 0400E | RESISTOR, FIXED, WIRE UOC: 3JQ | 1 |
| 46 | PAHZZ | 96906 | MS35307-308 | SCREW, CAP, HEXAGON H | 8 |
| 47 | XBHZZ | 80063 | SM-C-633365 | BRACKET, MOUNTING UOC: BB6 | 2 |

END OF FIGURE



EL2XK035

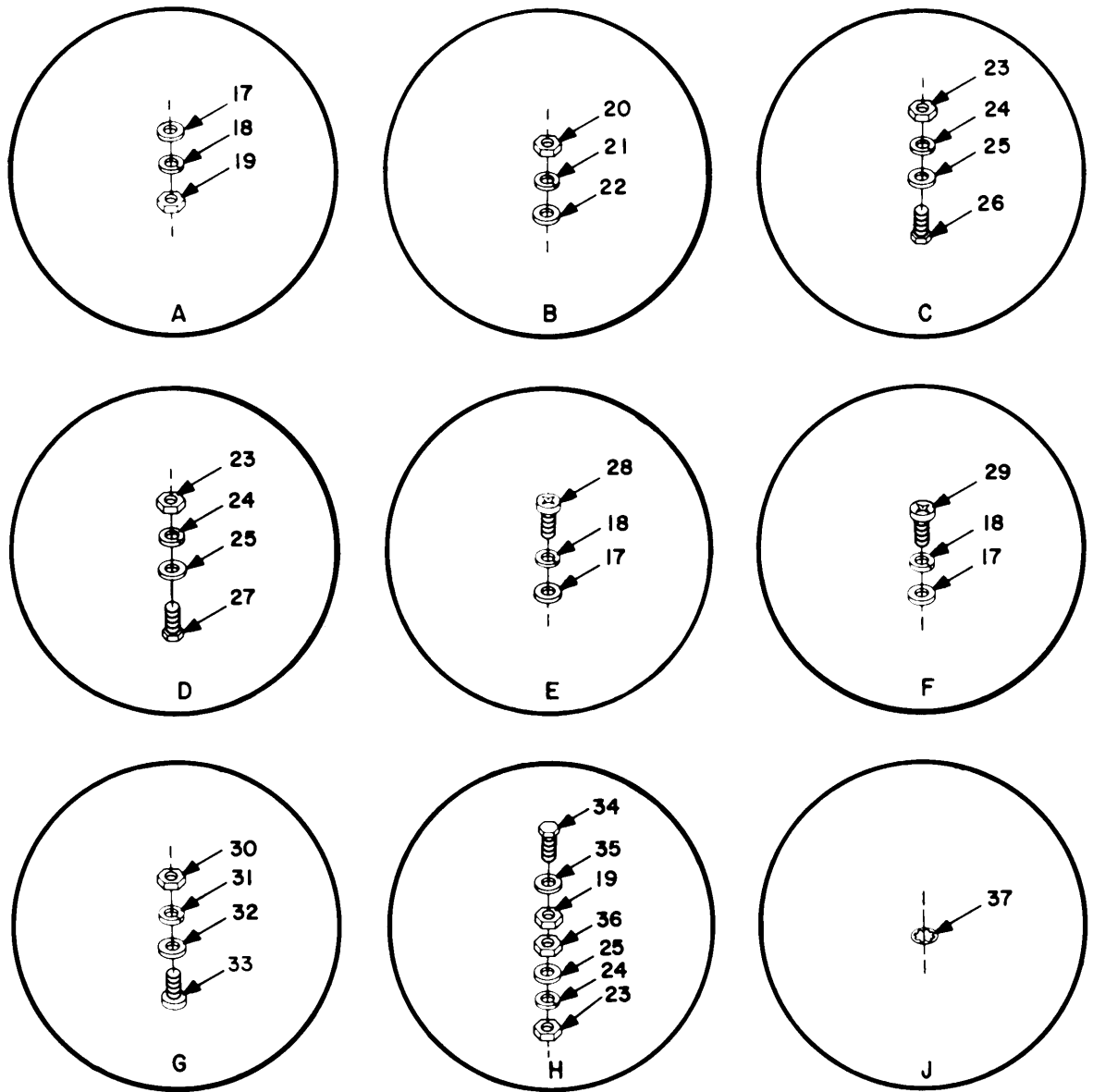
Figure 10. Power supply PP-4763/GRC and PP-4763A/GRC, right panel, internal view.

SECTION II

TM11-5820-765-34P-1

| (1) ITEM NO | (2) SMR CODE | (3) FSCM | (4) PART NUMBER | (5) DESCRIPTION AND USABLE ON CODE (UOC) | (6) QTY |
|---|--------------------|-------------|-----------------------|---|------------|
| GROUP 00 POWER SUPPLY PP-4763/GRC AND PP-4763A/GRC RIGHT PANEL ,INTERNAL VIEW | | | | | |
| FIGURE 10 | | | | | |
| 1 | XBHZZ | 03481 | A10-130 | NUT,PLAIN,BLIND RIV UOC:BB6 | 1 |
| 2 | XBHHH | 80063 | SM-D-633328 | PANEL,RIGHT UOC:BB6 | 1 |
| 2 | XBHZZ | 80063 | SM-D-640076 | PANEL,RIGHT UOC:3JQ | 1 |
| 3 | XBHZZ | 80063 | SM-B-640077 | BRACKET | 2 |
| 4 | PAHHH | 80063 | SM-B-640017 | RESISTOR ASSY | 1 |
| 5 | XBHZZ | 80063 | SM-B-640136 | NUT,SELF-LOCKING | 2 |
| 6 | PAHZZ | 80063 | SM-640106-2 | WASHER, SHIELEDDED | 2 |
| 7 | PAHZZ | 44655 | 6017 | INSULATOR,WASHER | 2 |
| 8 | PAHZZ | 88044 | AN960C416 | WASHER, FLAT | 2 |
| 9 | XBHZZ | 80063 | SM-B-640078 | STUD,CONTINUOUS THR | 1 |
| 10 | PAHZZ | 81349 | RW38V8R2 | RESISTOR, FIXED,WIRE UOC:BB6 | 1 |
| 11 | PAHZZ | 96906 | MS18012-5 | HANDLE, BAIL | 1 |
| 12 | XBHZZ | 80063 | SM-D-633328-1 | PANEL,RIGHT UOC:BB6 | 1 |
| 13 | XBHZZ | 80063 | SM-B-640041-1 | COPPER BRAID WIRE | 1 |
| 14 | PAHZZ | 96906 | MS25036-112 | TERMINAL, LUG | 2 |
| 15 | PAHZZ | 96906 | MS35650-304 | NUT, PLAIN, HEXAGON | 9 |
| 16 | PAHZZ | 96906 | MS35335-88 | WASHER, LOCK | 3 |
| 17 | XBHZZ | 80063 | SM-B-640041 | LEAD, ELECTRICAL | 1 |
| 18 | PAHZZ | 96906 | MS51958-64 | SCREW, MACHINE | 6 |
| 19 | PAHZZ | 96906 | MS51958-63 | SCREW, MACHINE | 3 |
| 20 | PAHZZ | 88044 | AN960C10L | WASHER, FLAT | 8 |
| 21 | PAHZZ | 96906 | MS35338-138 | WASHER, LOCK | 8 |
| 22 | PAHZZ | 96906 | MS35338-139 | WASHER, LOCK | 2 |
| 23 | PAHZZ | 96906 | MS16228-4C | NUT, SELF-LOCKING, HE | 2 |

END OF FIGURE



EL2XK037

Figure 11. Power supply PP-4763/GRC and PP-4763A/GRC, transformer frame assembly (Sheet 2 of 2).

SECTION II

TM11-5820-765-34P-1

| (1) ITEM NO | (2) SMR CODE | (3) FSCM | (4) PART NUMBER | (5) DESCRIPTION AND USABLE ON CODE (UOC) | (6) QTY |
|-------------------|--------------------|-------------|-----------------------|---|------------|
| | | | | GROUP 00 POWER SUPPLY PP-4763/GRC AND PP-4763A/GRC TRANS- FORMER FRAME ASSEMBLY | |
| | | | | FIGURE 11 | |
| 1 | XBHZZ | 80063 | SM-B-640143 | BRACKET | 1 |
| 2 | XBHZZ | 80063 | SM-D-633338 | REACTOR ASSEMBLY | 1 |
| | | | | UOC:BB6 | |
| 2 | PAHZZ | 80063 | SM-D-640100 | REACTOR | 1 |
| | | | | UOC:3JQ | |
| 3 | PAHZZ | 80063 | SM-C-633312 | TRANSFORMER ASSY | 1 |
| 3 | XBHHH | 80063 | SM-C-640029 | TRANSFORMER | 1 |
| | | | | UOC:3JQ | |
| 4 | XBHZZ | 80063 | SM-B-640146-1 | ANGLE | 1 |
| 5 | XBHHH | 80063 | SM-D-633314 | WIRING HARNESS | 1 |
| | | | | UOC:BB6 | |
| 5 | XBHZZ | 80063 | SM-C-640038 | WIRING HARNESS | 1 |
| | | | | UOC:3JQ | |
| 6 | XBHHH | 80063 | SM-B-640026 | HEAT SINK AND DIODE | 1 |
| 7 | XBHHH | 80063 | SM-B-640027 | TERMINAL BOARD | 1 |
| 8 | XBHHH | 80063 | SM-B-640025 | HEAT SINK AND DIODE | 1 |
| 9 | PAHZZ | 80063 | SM-B-640137-4 | CABLE,TIE | 1 |
| | | | | UOC:BB6 | |
| 10 | XBHHH | 80063 | SM-C-633309 | MOUNTING ASSY | 1 |
| | | | | UOC:BB6 | |
| 10 | XBFHH | 80063 | SM-C-640023 | MOUNTING ASSEMBLY | 1 |
| | | | | UOC:3JQ | |
| 11 | PAHZZ | 80063 | SM-B-633346 | SPACER,SLEEVE | 4 |
| | | | | UOC:BB6 | |
| 11 | XBHZZ | 80063 | SM-B-640142 | SPACER,SLEEVE | 4 |
| | | | | UOC:3JQ | |
| 12 | XBHZZ | 80063 | SM-B-640141 | SPACER,SLEEVE | 4 |
| 13 | XBHHH | 80063 | SM-B-633311 | INSULATOR ASSEMBLY | 1 |
| | | | | UOC:BB6 | |
| 13 | XBHHH | 80063 | SM-B-640028 | INSULATOR ASSEMBLY | 1 |
| | | | | UOC:3JQ | |
| 14 | PAHZZ | 80063 | SM-B-640144 | INSULATOR | 1 |
| 15 | PAHZZ | 80063 | SM-B-633347 | BRACKET | 1 |
| | | | | UOC:BB6 | |
| 15 | XBHZZ | 80063 | SM-D-640145 | BRACKET,MOUNTING | 1 |
| | | | | UOC:3JQ | |
| 16 | XBHZZ | 80063 | SM-B-640146-2 | ANGLE | 1 |
| 17 | PAHZZ | 88044 | AN960C10L | WASHER,FLAT | 9 |
| 18 | PAHZZ | 96906 | MS35338-138 | WASHER,LOCK | 15 |
| 19 | PAHZZ | 96906 | MS35650-304 | NUT,PLAIN,HEXAGON | 4 |
| 20 | PAHZZ | 96906 | MS35650-302 | NUT,PLAIN,HEXAGON | 2 |
| 21 | PAHZZ | 80063 | SM-A-977601-303 | WASHER,LOCK | 2 |
| | | | | UOC:BB6 | |
| 22 | PAHZZ | 88044 | AN961-101 | WASHER,FLAT | 2 |
| | | | | UOC:BB6 | |

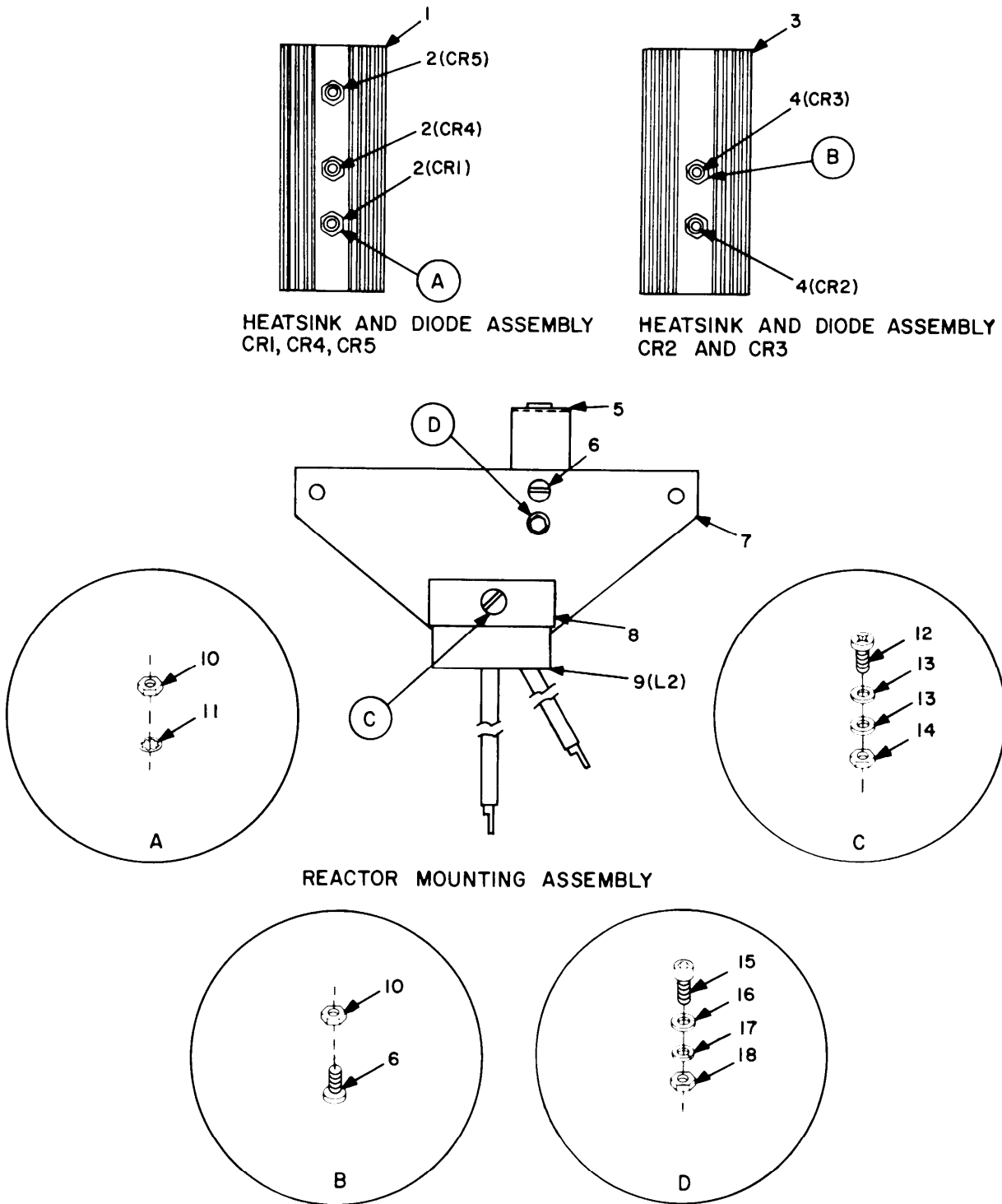
SECTION II

TM11-5820-765-34P-1

| (1) ITEM NO | (2) SMR CODE | (3) FSCM | (4) PART NUMBER | (5) DESCRIPTION AND USABLE ON CODE (UOC) | (6) QTY |
|-------------------|--------------------|-------------|-----------------------|---|------------|
| 23 | PAHZZ | 96906 | MS35649-2254 | NUT, PLAIN, HEXAGON | 13 |
| 24 | PAHZZ | 96906 | MS35338-139 | WASHER, LOCK | 12 |
| 25 | PAHZZ | 88044 | AN960C416 | WASHER, FLAT | 18 |
| 26 | PAHZZ | 96906 | MS35307-308 | SCREW, CAP, HEXAGON H | 2 |
| 27 | PAHZZ | 96906 | MS35307-306 | SCREW, CAP, HEXAGON H | 8 |
| 28 | PAHZZ | 96906 | MS51958-64 | SCREW, MACHINE | 2 |
| 29 | PAHZZ | 96906 | MS51958-66 | SCREW, MACHINE | 1 |
| 30 | PAHZZ | 96906 | MS35649-285T | NUT, PLAIN, HEXAGON | 5 |
| 31 | PAHZZ | 96906 | MS35338-41 | WASHER, LOCK | 5 |
| 32 | PAHZZ | 88044 | AN961-6T | WASHER, FLAT | 5 |
| 33 | PAHZZ | 96906 | MS35206-230 | SCREW, MACHINE | 5 |
| 34 | PAHZZ | 96906 | MS90725-10 | SCREW, CAP, HEXAGON H | 2 |
| 35 | PAHZZ | 96906 | MS45901-5 | WASHER, FALT | 2 |
| 36 | PAHZZ | 80063 | SM-A-977599-2255 | NUT, PLAIN, HEXAGON | 2 |
| 37 | PAHZZ | 96906 | MS35333-105 | WASHER, LOCK | 1 |

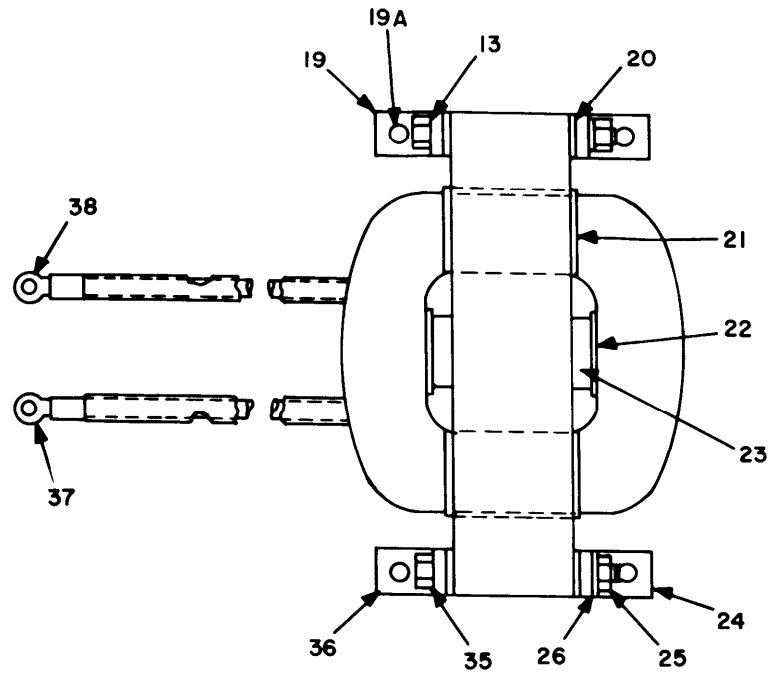
UOC:BB6

END OF FIGURE

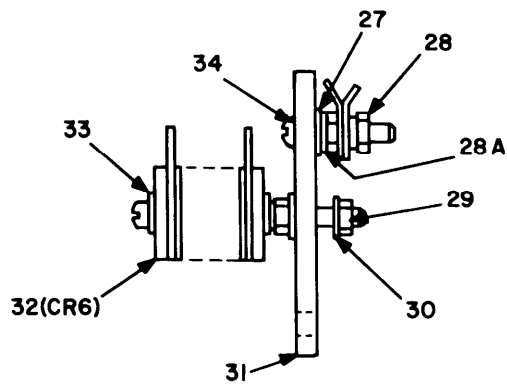


EL2XK038

Figure 12. Power supply PP-4763/GRC and PP-4763A/GRC, transformer frame subassemblies (Sheet 1 of 2).



REACTOR ASSEMBLY LI



TERMINAL BOARD AND
RECTIFIER ASSEMBLY

EL2XK039

Figure 12. Power supply PP-4763/GRC and PP-4763A/GRC, transformer frame subassemblies (Sheet 2 of 2).

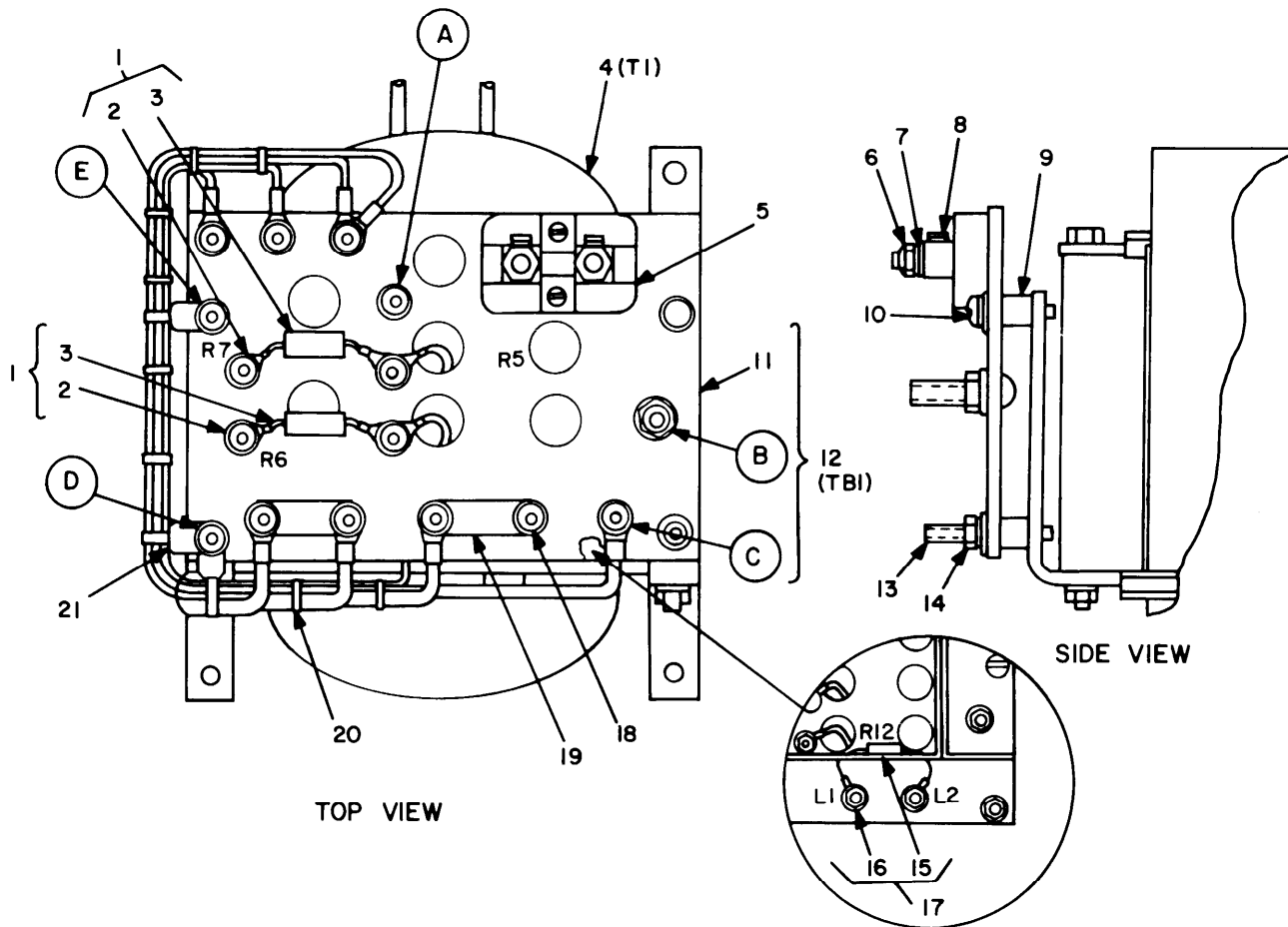
| (1) ITEM NO | (2) SMR CODE | (3) FSCM | (4) PART NUMBER | (5) DESCRIPTION AND USABLE ON CODE (UOC) | (6) QTY |
|--|--------------------|-------------|-----------------------|---|------------|
| GROUP 00 POWER SUPPLY PP-4763/GRC AND PP-4763A/GRC TRANS- FORMER FRAME SUBASSEMBLIES | | | | | |
| FIGURE 12 | | | | | |
| 1 | PAHZZ | 80063 | SM-D-640068-1 | HEAT SINK, DIODE | 1 |
| 2 | PAHZZ | 81349 | JAN1N1186R | SEMICONDUCTOR DEVIC | 3 |
| 3 | XBHZZ | 80063 | SM-D-640068-2 | HEAT SINK, DIODE | 1 |
| 4 | PAHZZ | 81349 | JAN1N1186 | SEMICONDUCTOR DEVIC | 2 |
| 5 | PAHZZ | 80063 | SM-B-633340 | BRACKET UOC:BB6 | 1 |
| 6 | PAHZZ | 96906 | MS51958-66 | SCREW, MACHINE | 1 |
| 7 | PAHZZ | 80063 | SM-B-633352 | INSULATOR-SUPPORT UOC:BB6 | 1 |
| 8 | PAHZZ | 80063 | SM-B-640104 | INSULATOR | 1 |
| 9 | PAHZZ | 80063 | SM-C-633310 | REACTOR ASSEMBLY UOC:BB6 | 1 |
| 9 | XBHZZ | 80063 | SM-B-640024 | REACTOR UOC:3JQ | 1 |
| 10 | PAHZZ | 96906 | MS51968-2 | NUT, PLAIN, HEXAGON | 3 |
| 11 | PAHZZ | 96906 | MS35335-89 | WASHER, LOCK | 3 |
| 12 | PAHZZ | 96906 | MS51957-58 | SCREW, MACHINE | 4 |
| 13 | PAHZZ | 88044 | AN960C416 | WASHER, FLAT | 2 |
| 14 | PAHZZ | 80063 | SM-B-977603 | NUT, SELF-LOCKING | 1 |
| 15 | PAHZZ | 96906 | MS51958-64 | SCREW, MACHINE | 1 |
| 16 | PAHZZ | 88044 | AN960C10L | WASHER, FLAT | 3 |
| 17 | PAHZZ | 96906 | MS35338-138 | WASHER, LOCK | 2 |
| 18 | PAHZZ | 96906 | MS35650-304 | NUT, PLAIN, HEXAGON | 2 |
| 19 | XBHZZ | 80063 | SM-B-633339-1 | BRACKET, ANGLE, FRONT UOC:BB6 | 1 |
| 19 | XBHZZ | 80063 | SM-B-640101-1 | BRACKET, ANGLE, FRONT UOC:3JQ | 1 |
| 19A | PAHZZ | 88044 | AN960-416 | WASHER, FLAT UOC:BB6 | 8 |
| 20 | PAHZZ | 80063 | SM-B-640149 | INSULATOR-MAGNETIC UOC:BB6 | 4 |
| 21 | PAHZZ | 80063 | SM-B-640091-2 | INSULATOR, PLATE UOC:BB6 | 4 |
| 22 | PAHZZ | 80063 | SM-B-640090 | INSULATOR, PLATE UOC:BB6 | 2 |
| 23 | PAHZZ | 80063 | SM-B-640089 | WEDGE, MAGNET COIL UOC:BB6 | 2 |
| 24 | XBHZZ | 80063 | SM-B-640102 | BRACKET, ANGLE, REAR UOC:BB6 | 2 |
| 25 | PAHZZ | 96906 | MS51967-2 | NUT, PLAIN, HEXAGON UOC:BB6 | 4 |
| 26 | PAHZZ | 96906 | MS35338-44 | WASHER, LOCK UOC:BB6 | 4 |
| 27 | XDHZZ | 88044 | AN961-10T | WASHER, FLAT | 2 |
| 28 | XBHZZ | 96906 | MS35650-305T | NUT, PLAIN, HEXAGON | 2 |

SECTION II

TM11-5820-765-34P-1

| (1) ITEM NO | (2) SMR CODE | (3) FSCM | (4) PART NUMBER | (5) DESCRIPTION AND USABLE ON CODE (UOC) | (6) QTY |
|-------------------|--------------------|-------------|-----------------------|---|------------|
| 29 | XBHZZ | 96906 | MS35649-284 | NUT, PLAIN, HEXAGON | 1 |
| 30 | PAHZZ | 96906 | MS35335-59 | WASHER, LOCK | 1 |
| 31 | PAHZZ | 80063 | SM-B-640058 | INSULATOR | 1 |
| 32 | XBHZZ | 81483 | KSA3T2AD | RECTIFIER | 1 |
| 33 | PAHZZ | 88044 | AN960C8 | WASHER, FLAT | 1 |
| 34 | PAHZZ | 80063 | SM-B-640120-1 | SCREW, SHOULDER | 2 |
| 35 | PAHZZ | 96906 | MS90726-21 | SCREW, CAP, HEXAGON H UOC:BB6 | 4 |
| 36 | PAHZZ | 80063 | SM-B-633339-3 | BRACKET, ANGLE, FRONT UOC:BB6 | 1 |
| 36 | XBHZZ | 80063 | SM-B-640101-2 | BRACKET, ANGLE, FRONT UOC:3JQ | 1 |
| 37 | PAHZZ | 96906 | MS20659-111 | TERMINAL, LUG UOC:BB6 | 1 |
| 38 | PAHZZ | 96906 | MS20659-144 | TERMINAL, LUG UOC:BB6 | 1 |

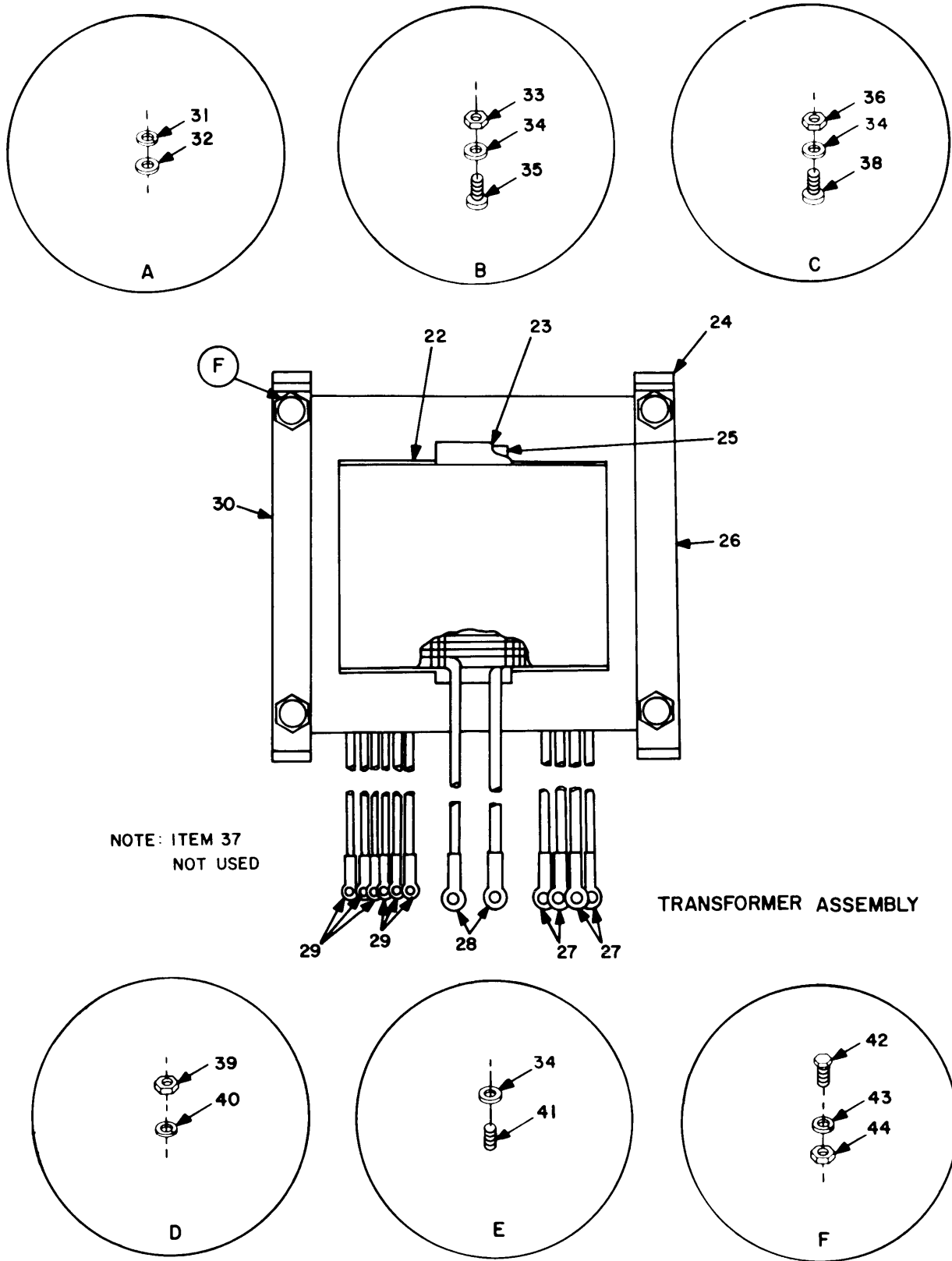
END OF FIGURE



SEE SHEET 2 FOR ENCIRCLED DETAILS.

EL2XK040

Figure 13. Power supply PP-4763/GRC and PP-4763A/GRC, transformer and terminal board assembly (Sheet 1 of 2).



EL2XK041

Figure 13. Power supply PP-4763/GRC and PP-4763A/GRC, transformer and terminal board assembly (Sheet 2 of 2).

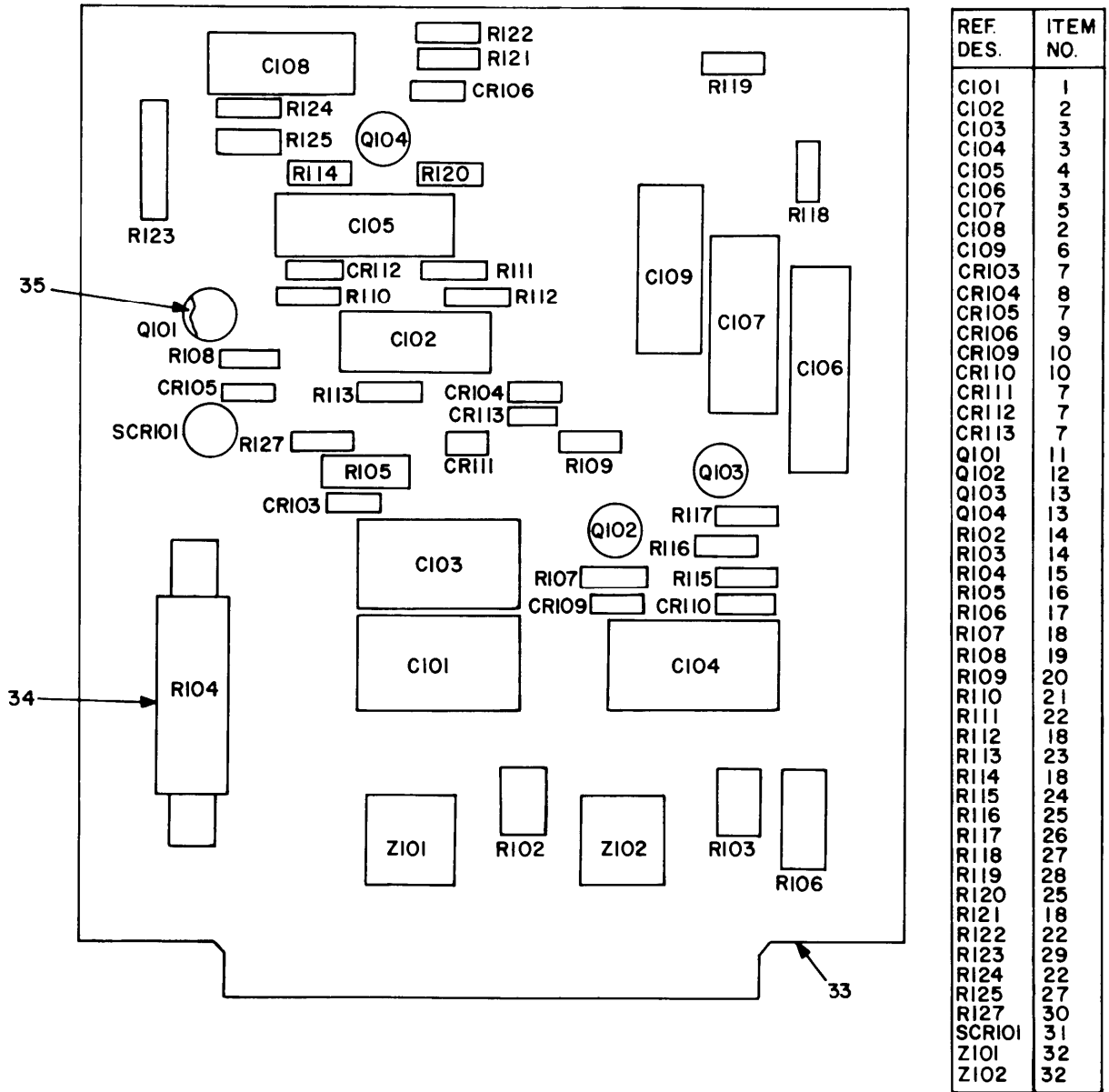
| (1) ITEM NO | (2) SMR CODE | (3) FSCM | (4) PART NUMBER | (5) DESCRIPTION AND USABLE ON CODE (UOC) | (6) QTY |
|---|--------------------|-------------|-----------------------|---|------------|
| GROUP 00 POWER SUPPLY PP-4763/GRC AND PP-4763A/GRC TRANS- FORMER AND TERMINAL BOARD ASSEMBLY | | | | | |
| FIGURE 13 | | | | | |
| 1 | PAHHH | 80063 | SM-B-640030 | RESISTOR ASSEMBLY | 2 |
| 2 | PAHZZ | 80063 | SM-B-640048-2 | TERMINAL, LUG | 2 |
| 3 | PAHZZ | 81349 | RL42S272GTX | RESISTOR, FIXED, FILM | 1 |
| 4 | PAHZZ | 80063 | SM-D-633331 | TRANSFORMER, POWER UOC:BB6 | 1 |
| 4 | PAHZZ | 80063 | SM-D-640086 | TRANSFORMER, POWER UOC:3JQ | 1 |
| 5 | PAHZZ | 96906 | MS91586-4 | SHUNT, INSTRUMENT UOC:BB6 | 1 |
| 6 | PAHZZ | 96906 | MS21044C08 | NUT, SELF-LOCKING, HE UOC:BB6 | 2 |
| 7 | PAHZZ | 96906 | AN960C8 | WASHER, FLAT UOC:BB6 | 2 |
| 8 | PAHZZ | 96906 | MS51957-48 | SCREW, MACHINE UOC:BB6 | 4 |
| 9 | XBHZZ | 80063 | SM-B-640140-1 | SPACER, SLEEVE | 4 |
| 10 | PAHZZ | 96906 | MS35207-267 | SCREW, MACHINE | 1 |
| 11 | XBHZZ | 80063 | SM-C-633337 | INSULATOR UOC:BB6 | 1 |
| 11 | XBHZZ | 80063 | SM-C-640099 | INSULATOR UOC:3JQ | 1 |
| 12 | PAHZZ | 80063 | SM-B-633313 | TERMINAL BOARD UOC:BB6 | 1 |
| 12 | XBHHH | 80063 | SM-B-640032 | TERMINAL BOARD UOC:3JQ | 1 |
| 13 | PAHZZ | 80063 | SM-B-640139 | STUD, CONTINUOUS THR | 1 |
| 14 | PAHZZ | 96906 | MS35650-305T | NUT, PLAIN, HEXAGON | 14 |
| 15 | XBHZZ | 91637 | RS500B22100F | RESISTOR, FIXED, WIRE UOC:3JQ | 1 |
| 16 | XBHZZ | 14726 | B4112B | TERMINAL, LUG UOC:3JQ | 2 |
| 17 | XBHHH | 80063 | SM-B-640031 | RESISTOR ASSEMBLY UOC:3JQ | 1 |
| 18 | PAHZZ | 96906 | MS21044C3 | NUT, SELF-LOCKING, HE | 6 |
| 19 | XBHZZ | 80063 | SM-B-633364 | BUS BAR, LINK UOC:BB6 | 2 |
| 20 | PAHZZ | 96906 | MS3367-5-9 | STRAP, TIEDOWN, ELECT UOC:BB6 | V |
| 21 | XBHZZ | 80063 | SM-B-640137-3 | CABLE TIE UOC:BB6 | 3 |
| 22 | XBHZZ | 80063 | SM-B-640091-1 | INSULATOR, PLATE UOC:BB6 | 4 |
| 23 | XBHZZ | 80063 | SM-B-640090 | INSULATOR, PLATE UOC:BB6 | 2 |

SECTION II

TM11-5820-765-34P-1

| (1) ITEM NO | (2) SMR CODE | (3) FSCM | (4) PART NUMBER | (5) DESCRIPTION AND USABLE ON CODE (UOC) | (6) QTY |
|-------------------|--------------------|-------------|-----------------------|---|------------|
| 24 | XBHZZ | 80063 | SM-B-640088 | BRACKET, ANGLE UOC:BB6 | 2 |
| 25 | XBHZZ | 80063 | SM-B-640089 | WEDGE, MAGNET COIL UOC:BB6 | 1 |
| 26 | XBHZZ | 80063 | SM-B-633332-1 | BRACKET, ANGLE UOC:BB6 | 1 |
| 27 | PAHZZ | 96906 | MS25036-116 | TERMINAL, LUG UOC:BB6 | 4 |
| 28 | PAHZZ | 96906 | MS20659-107 | TERMINAL, LUG UOC:BB6 | 2 |
| 29 | PAHZZ | 96906 | MS25036-103 | TERMINAL, LUG UOC:BB6 | 6 |
| 30 | XBHZZ | 80063 | SM-B-633332-2 | BRACKET, ANGLE UOC:BB6 | 1 |
| 31 | XBHZZ | 80063 | SM-A-977602-100 | WASHER, LOCK | 14 |
| 32 | XDHZZ | 88044 | AN961-10T | WASHER, FLAT UOC:BB6 | 18 |
| 33 | PAHZZ | 96906 | MS51967-2 | NUT, PLAIN, HEXAGON | 3 |
| 34 | PAHZZ | 88044 | AN960C10L | WASHER, FLAT | 5 |
| 35 | XBHZZ | 96906 | MS51958-67 | SCREW, MACHINE | 1 |
| 36 | PAHZZ | 96906 | MS35650-302 | NUT, PLAIN, HEXAGON | 11 |
| 38 | XBHZZ | 80063 | SM-B-640116 | SCREW, SPLINED | 11 |
| 39 | PAHZZ | 96906 | MS35650-304 | NUT, PLAIN, HEXAGON | 2 |
| 40 | PAHZZ | 96906 | MS35338-138 | WASHER, LOCK | 3 |
| 41 | PAHZZ | 80063 | SM-B-640138 | STUD, CONTINUOUS THR | 2 |
| 42 | XBHZZ | 96906 | MS35291-25 | SCREW, CAP, HEXAGON UOC:BB6 | 4 |
| 43 | PAHZZ | 96906 | MS35338-44 | WASHER, LOCK UOC:BB6 | 4 |
| 44 | XBHZZ | 96906 | MS35650-402 | NUT, PLAIN, HEXAGON UOC:BB6 | 4 |

END OF FIGURE



EL2XK042

Figure 14. Power supply PP-4763/GRC and PP-4763A/GRC, circuit card assembly (PC101) (PP-4763/GRC).

SECTION II

TM11-5820-765-34P-1

| (1) ITEM NO | (2) SMR CODE | (3) FSCM | (4) PART NUMBER | (5) DESCRIPTION AND USABLE ON CODE (UOC) | (6) QTY |
|---|--------------------|-------------|-----------------------|---|------------|
| GROUP 01 CIRCUIT CARD ASSEMBLY (PC101) (PP-4763/GRC) | | | | | |
| FIGURE 14 | | | | | |
| 1 | PAHZZ | 00098 | C437ARF160 | CAPACITOR, FIXED, ELE UOC: 3JQ | 1 |
| 2 | XBHZZ | 81349 | CTM014VBK | CAPACITOR, FIXED, UOC: 3JQ | 2 |
| 3 | PAHZZ | 00098 | C437ARH100 | CAPACITOR, FIXED, ELE UOC: 3JQ | 3 |
| 4 | PAHZZ | 81349 | CTM224VBJ | CAPACITOR, FIXED, PLA UOC: 3JQ | 1 |
| 5 | PAHZZ | 80063 | SM-B-640171 | CAPACITOR, FIXED UOC: 3JQ | 1 |
| 6 | XBHZZ | 73445 | C426ARG50 | CAPACITOR, FIXED, ELE UOC: 3JQ | 1 |
| 7 | XBHZZ | 81349 | 1N4003 | SEMICONDUCTOR DEVIC UOC: 3JQ | 5 |
| 8 | XBHZZ | 81349 | 1N937A | SEMICONDUCTOR UOC: 3JQ | 1 |
| 9 | PAHZZ | 81349 | JAN1N935 | SEMICONDUCTOR DEVIC UOC: 3JQ | 1 |
| 10 | XBHZZ | 06751 | UZ720 | SEMICONDUCTOR UOC: 3JQ | 2 |
| 11 | PAHZZ | 19200 | 10554157 | TRANSISTOR UOC: 3JQ | 1 |
| 12 | PAHZZ | 81349 | JAN2N1711 | TRANSISTOR UOC: 3JQ | 1 |
| 13 | PAHZZ | 81349 | JAN2N2905A | TRANSISTOR UOC: 3JQ | 2 |
| 14 | XBHZZ | 81349 | RCR20G2R7JS | RESISTOR, FIXED, COMP UOC: 3JQ | 2 |
| 15 | PAHZZ | 81349 | RW68V750 | RESISTOR, FIXED, WIRE UOC: 3JQ | 1 |
| 16 | XBHZZ | 81349 | M22684-02-0098 | RESISTOR, FIXED, FILM UOC: 3JQ | 1 |
| 17 | XBHZZ | 81349 | M22684-02-0088 | RESISTOR, FIXED, FILM UOC: 3JQ | 1 |
| 18 | PAHZZ | 81349 | RLR20C1001GR | RESISTOR, FIXED, FILM UOC: 3JQ | 4 |
| 19 | XBHZZ | 81349 | RLR20C4700GR | RESISTOR, FIXED, FILM UOC: 3JQ | 1 |
| 20 | PAHZZ | 81349 | RLR20C51R0GR | RESISTOR, FIXED, FILM UOC: 3JQ | 1 |
| 21 | PAHZZ | 81349 | RCR20G224JS | RESISTOR, FIXED, FOMP UOC: 3JQ | 1 |
| 22 | XBHZZ | 81349 | M22684-02-0114 | RESISTOR, FIXED, FILM UOC: 3JQ | 3 |
| 23 | XBHZZ | 81349 | M22684-02-0088 | RESISTOR, FIXED, FILM UOC: 3JQ | 1 |

SECTION II

TM11-5820-765-34P-1

| (1) ITEM NO | (2) SMR CODE | (3) FSCM | (4) PART NUMBER | (5) DESCRIPTION AND USABLE ON CODE (UOC) | (6) QTY |
|-------------------|--------------------|-------------|-----------------------|---|------------|
| 24 | PAHZZ | 81349 | RLR20C5600GR | RESISTOR, FIXED, FILM UOC: 3JQ | 1 |
| 25 | XBHZZ | 81349 | M22684-02-0112 | RESISTOR, FIXED, FILM UOC: 3JQ | 2 |
| 26 | XBHZZ | 81349 | M22684-02-0122 | RESISTOR, FIXED, FILM UOC: 3JQ | 1 |
| 27 | PAHZZ | 81349 | RLR20C3300GS | RESISTOR, FIXED, FILM UOC: 3JQ | 2 |
| 28 | PAHZZ | 81349 | RLR20C6800GR | RESISTOR, FIXED, FILM UOC: 3JQ | 1 |
| 29 | XBHZZ | 96791 | 261BP1K | RESISTOR, VARIABLE UOC: 3JQ | 1 |
| 30 | PAHZZ | 81349 | RLR20C1000GR | RESISTOR, FIXED, FILM UOC: 3JQ | 1 |
| 31 | PAHZZ | 09214 | C6A | SEMICONDUCTOR DEVIC UOC: 3JQ | 1 |
| 32 | PAHZZ | 81483 | 18DB2A | RECTIFIER, SEMICONDU UOC: 3JQ | 2 |
| 33 | PAHZZ | 02294 | M111545-1 | PRINTED CIRCUIT BOA UOC: 3JQ | 1 |
| 34 | XBHZZ | 80063 | M109197-1 | HEAT SINK, RESISTOR UOC: 3JQ | 1 |
| 35 | PAHZZ | 70117 | P33A20 | INSULATOR, DISK UOC: 3JQ | 5 |

END OF FIGURE

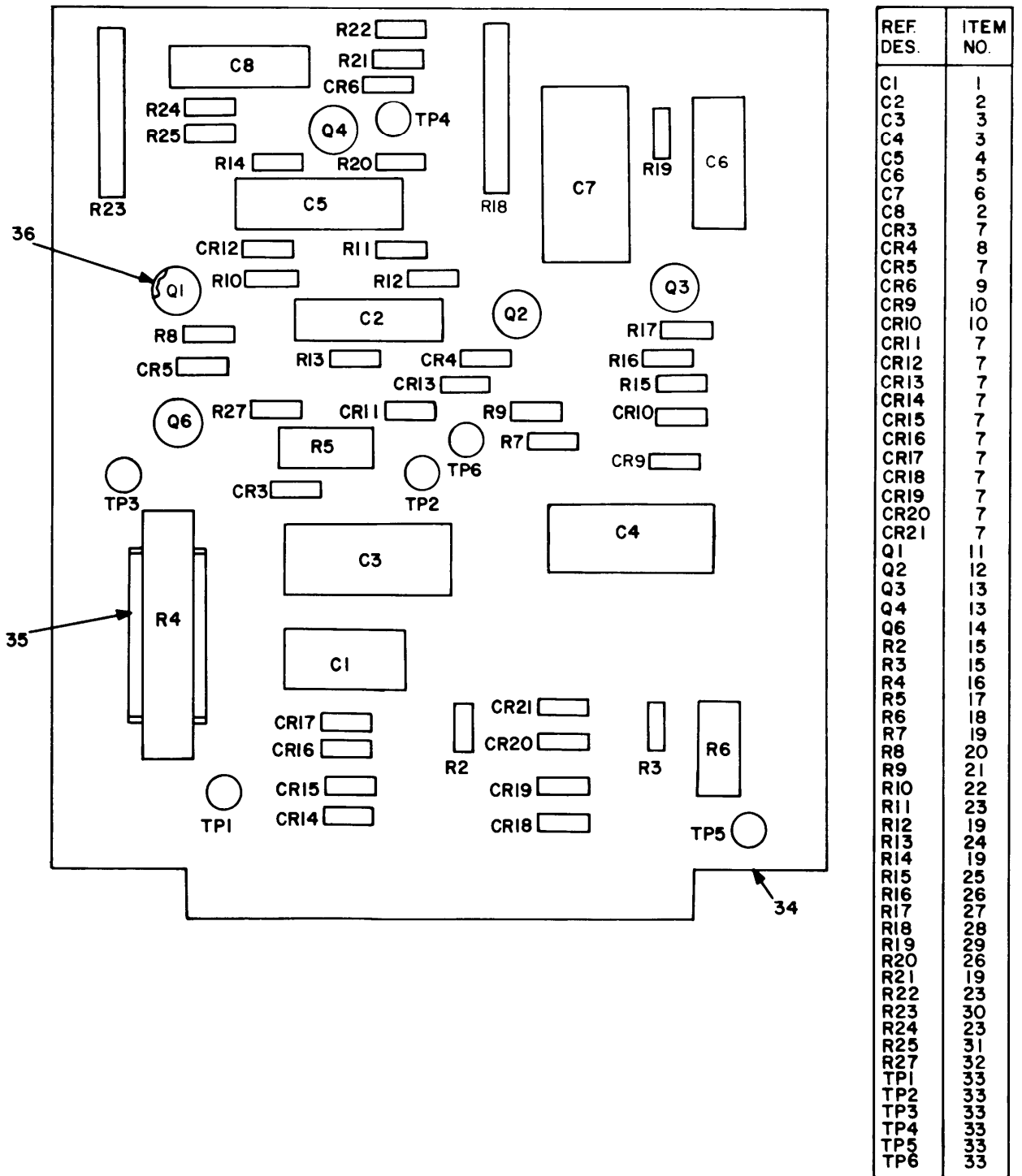


Figure 15. Power supply PP-4763/GRC and PP-4763A/GRC, circuit card assembly (A1) (PP-4763A/GRC).

SECTION II

TM11-5820-765-34P-1

| (1) ITEM NO | (2) SMR CODE | (3) FSCM | (4) PART NUMBER | (5) DESCRIPTION AND USABLE ON CODE (UOC) | (6) QTY |
|---|--------------------|-------------|-----------------------|---|------------|
| GROUP 01 CIRCUIT CARD ASSEMBLY (A1) (PP-4763A/GRC) | | | | | |
| FIGURE 15 | | | | | |
| 1 | XBHZZ | 81349 | CL65CG181MP3 | CAPACITOR, FIXED, ELE UOC: BB6 | 1 |
| 2 | PAHZZ | 81349 | CTM104VBJ | CAPACITOR, FIXED, PLA UOC: BB6 | 2 |
| 3 | PAHZZ | 56699 | 3073GG101T063JPB | CAPACITOR, FIXED, ELE UOC: BB6 | 2 |
| 4 | PAHZZ | 81349 | CTM224VBJ | CAPACITOR, FIXED, PLA UOC: BB6 | 1 |
| 5 | XBHZZ | 81349 | M39003-01-2071 | CAPACITOR, FIXE UOC: BB6 | 1 |
| 6 | PAHZZ | 81349 | M39022-01-1621 | CAPACITOR, FIXED, MET UOC: BB6 | 1 |
| 7 | PAHZZ | 81349 | JAN1N3611 | SEMICONDUCTOR DEVIC UOC: BB6 | 13 |
| 8 | PAHZZ | 81349 | JAN1N937B | SEMICONDUCTOR DEVIC UOC: BB6 | 1 |
| 9 | PAHZZ | 81349 | JAN1N935B | SEMICONDUCTOR DEVIC UOC: BB6 | 1 |
| 10 | PAHZZ | 81349 | JAN1N4965 | SEMICONDUCTOR DEVIC UOC: BB6 | 2 |
| 11 | PAHZZ | 81349 | JAN2N491A | TRANSISTOR UOC: BB6 | 1 |
| 12 | PAHZZ | 81349 | JAN2N1711 | TRANSISTOR UOC: BB6 | 1 |
| 13 | PAHZZ | 81349 | JAN2N2905A | TRANSISTOR UOC: BB6 | 2 |
| 14 | PAHZZ | 81349 | JAN2N2324 | SEMICONDUCTOR DEVIC UOC: BB6 | 1 |
| 15 | PAHZZ | 81349 | RCR20G4R7JS | RESISTOR, FIXED, COMP UOC: BB6 | 2 |
| 16 | PAHZZ | 81349 | RW68V750 | RESISTOR, FIXED, WIRE UOC: BB6 | 1 |
| 17 | XBHZZ | 81349 | M22684-04-0098 | RESISTOR, FIXED, FILM UOC: BB6 | 1 |
| 18 | XBHZZ | 81349 | M22684-04-0088 | RESISTOR, FIXED, FILM UOC: BB6 | 1 |
| 19 | PAHZZ | 81349 | RLR20C1001GR | RESISTOR, FIXED, FILM UOC: BB6 | 4 |
| 20 | XBHZZ | 81349 | M22684-02-0082 | RESISTOR, FIXED, FILM UOC: BB6 | 1 |
| 21 | PAHZZ | 81349 | RLR20C51R0GR | RESISTOR, FIXED, FILM UOC: BB6 | 1 |
| 22 | PAHZZ | 81349 | RCR20G224JS | RESISTOR, FIXED, COMP UOC: BB6 | 1 |
| 23 | XBHZZ | 81349 | RLR20C2201GR | RESISTOR, FIXED, FILM UOC: BB6 | 3 |

SECTION II

TM11-5820-765-34P-1

| (1) ITEM NO | (2) SMR CODE | (3) FSCM | (4) PART NUMBER | (5) DESCRIPTION AND USABLE ON CODE (UOC) | (6) QTY |
|-------------------|--------------------|-------------|-----------------------|---|------------|
| 24 | XBHZZ | 81349 | RLR20C6200GR | RESISTOR, FIXED, FILM UOC:BB6 | 1 |
| 25 | PAHZZ | 81349 | M22684-02-0086 | RESISTOR, FIXED, FILM UOC:BB6 | 1 |
| 26 | XBHZZ | 81349 | M22684-02-0112 | RESISTOR, FIXED, FILM UOC:BB6 | 2 |
| 27 | XBHZZ | 81349 | RLR20C3301GR | RESISTOR, FIXED, FILM UOC:BB6 | 1 |
| 28 | PAHZZ | 81349 | M39015/1-005PP | RESISTOR, VARIABLE, W UOC:BB6 | 1 |
| 29 | PAHZZ | 81349 | RLR20C6800GR | RESISTOR, FIXED, FILM UOC:BB6 | 1 |
| 30 | PAHZZ | 81349 | M39015/1-004PP | RESISTOR, VARIABLE, W UOC:BB6 | 1 |
| 31 | PAHZZ | 81349 | RLR20C3300GS | RESISTOR, FIXED, FILM UOC:BB6 | 1 |
| 32 | PAHZZ | 81349 | RLR20C1000GR | RESISTOR, FIXED, FILM UOC:BB6 | 1 |
| 33 | PAHZZ | 80063 | SM-B-633358 | JACK, TIP UOC:BB6 | 6 |
| 34 | XAHZZ | 80063 | SM-D-633336 | PRINTED WIRING BOAR UOC:BB6 | 1 |
| 35 | XBHZZ | 80063 | SM-B-640053 | HEAT SINK, RESISTOR UOC:BB6 | 1 |
| 36 | PAHZZ | 80045 | 813360 | PAD TRANSISTOR UOC:BB6 | 5 |

END OF FIGURE

NATIONAL STOCK NUMBER AND PART NUMBER INDEX

| | | NATIONAL STOCK NUMBER INDEX | | | |
|------------------|------|-----------------------------|------------------|------|------|
| STOCK NUMBER | FIG. | ITEM | STOCK NUMBER | FIG. | ITEM |
| 4140-01-169-1697 | 3 | 5 | 5940-00-114-1305 | 13 | 27 |
| 5995-01-147-4605 | 7 | 2 | 5905-00-114-5393 | 14 | 21 |
| 5305-00-001-4872 | 9 | 26 | | 15 | 22 |
| | 12 | 34 | 5940-00-115-2677 | 12 | 38 |
| 5305-00-001-4873 | 7 | 15 | 5940-00-115-2678 | 12 | 37 |
| 5995-00-008-7459 | 2 | 31 | 5961-00-115-8469 | 8 | 30 |
| 5999-00-008-7479 | 8 | 19 | 5961-00-116-6553 | 14 | 11 |
| 5970-00-009-0200 | 2 | 11 | 5905-00-126-6705 | 15 | 15 |
| 5310-00-019-0669 | 11 | 37 | 5950-00-133-8940 | 11 | 2 |
| 5310-00-019-0672 | 2 | 29 | 5950-00-133-8953 | 13 | 4 |
| 5305-00-021-3616 | 2 | 41 | 5310-00-136-1472 | 2 | 54 |
| 5905-00-039-9528 | 15 | 30 | | 8 | 13 |
| 5310-00-045-4007 | 2 | 53 | | 9 | 13 |
| | 11 | 31 | | 11 | 32 |
| 5905-00-048-5165 | 2 | 2 | 5310-00-141-1795 | 2 | 39 |
| 5305-00-051-0227 | 7 | 12 | | 12 | 19A |
| 5961-00-054-0046 | 14 | 12 | 5940-00-143-4771 | 6 | 4 |
| | 15 | 12 | | 13 | 29 |
| 5305-00-054-5649 | 2 | 57 | 5940-00-143-4794 | 8 | 15 |
| | 5 | 40 | | 10 | 14 |
| 5305-00-054-5651 | 7 | 27 | 5310-00-167-0801 | 7 | 21 |
| 5305-00-054-6655 | 3 | 11 | 5310-00-167-0803 | 2 | 47 |
| 5305-00-054-6656 | 3 | 7 | 5310-00-167-0812 | 2 | 19 |
| 5305-00-054-6670 | 5 | 22 | | 5 | 36 |
| 5305-00-054-6673 | 13 | 8 | | 6 | 13 |
| 5305-00-054-6674 | 7 | 28 | | 8 | 46 |
| 5305-00-059-3659 | 5 | 35 | | 10 | 20 |
| | 7 | 20 | | 11 | 17 |
| | 8 | 23 | | 12 | 16 |
| | 10 | 19 | | 13 | 34 |
| 5305-00-059-3660 | 2 | 20 | 5310-00-167-0818 | 2 | 9 |
| | 6 | 8 | 5820-00-179-3149 | 2 | 10 |
| | 10 | 18 | 5820-00-179-3150 | 7 | 5 |
| | 11 | 28 | 5310-00-184-8977 | 8 | 51 |
| | 12 | 15 | 5307-00-187-6421 | 13 | 41 |
| 5305-00-059-3661 | 2 | 17 | 5307-00-187-6423 | 13 | 13 |
| | 6 | 12 | 5905-00-194-0481 | 14 | 20 |
| | 7 | 24 | | 15 | 21 |
| 5305-00-059-3662 | 2 | 37 | 5905-00-196-7213 | 14 | 28 |
| | 8 | 45 | | 15 | 29 |
| | 11 | 29 | 6625-00-197-2365 | 13 | 5 |
| | 12 | 6 | 5940-00-204-8990 | 8 | 14 |
| 5305-00-059-3665 | 8 | 35 | 5305-00-207-8253 | 9 | 46 |
| 5305-00-059-3666 | 8 | 39 | | 11 | 26 |
| 5305-00-066-7328 | 4 | 1 | 5310-00-208-9255 | 2 | 38 |
| | 5 | 39 | | 7 | 25 |
| 5305-00-071-2241 | 11 | 34 | | 13 | 18 |
| 5905-00-099-9596 | 15 | 28 | 5925-00-220-3530 | 5 | 2 |
| 5975-00-111-3208 | 13 | 20 | 5999-00-220-5239 | 14 | 33 |
| 5940-00-113-9824 | 13 | 28 | 5961-00-226-5134 | 15 | 8 |

NATIONAL STOCK NUMBER AND PART NUMBER INDEX

| | | NATIONAL STOCK NUMBER INDEX | | | |
|------------------|------|-----------------------------|------------------|------|------|
| STOCK NUMBER | FIG. | ITEM | STOCK NUMBER | FIG. | ITEM |
| 5961-00-227-9770 | 15 | 10 | 5340-00-801-2957 | 6 | 11 |
| 5310-00-245-3615 | 2 | 45 | | 10 | 11 |
| 5310-00-245-8825 | 10 | 23 | 5961-00-833-3042 | 12 | 4 |
| 5950-00-246-4524 | 13 | 4 | 5910-00-835-2953 | 15 | 2 |
| 5310-00-250-9477 | 9 | 33 | 5910-00-835-2961 | 14 | 4 |
| | 11 | 23 | | 15 | 4 |
| 5310-00-261-8278 | 9 | 20 | 5935-00-849-4578 | 8 | 10 |
| 5310-00-264-1390 | 7 | 35 | 5935-00-850-5593 | 8 | 11 |
| 5970-00-281-0899 | 10 | 7 | 5961-00-869-4857 | 14 | 31 |
| 5910-00-323-9325 | 15 | 6 | 5999-00-878-6660 | 2 | 10 |
| 5905-00-100-4868 | 9 | 44 | 5910-00-878-8512 | 9 | 5 |
| 5310-00-410-3016 | 9 | 11 | 5310-00-880-5976 | 3 | 9 |
| 5310-00-410-3025 | 5 | 31 | | 5 | 28 |
| | 9 | 17 | 5305-00-889-3000 | 11 | 33 |
| | 13 | 14 | 5905-00-894-0174 | 9 | 44 |
| 5961-00-410-5128 | 14 | 32 | 5961-00-926-2569 | 15 | 11 |
| 4920-00-420-9449 | 7 | 9 | 5905-00-926-8706 | 14 | 30 |
| 5930-00-519-8144 | 4 | 11 | | 15 | 32 |
| 5310-00-531-9515 | 10 | 8 | 5905-00-926-8708 | 14 | 18 |
| | 11 | 25 | | 15 | 19 |
| | 12 | 13 | 5310-00-929-6395 | 3 | 8 |
| 5910-00-534-7737 | 15 | 3 | | 5 | 27 |
| 5905-00-577-3656 | 5 | 6 | 5310-00-933-8118 | 5 | 42 |
| 5905-00-577-7341 | 5 | 14 | | 8 | 42 |
| 5310-00-582-5965 | 12 | 26 | 5310-00-933-8119 | 2 | 42 |
| | 13 | 43 | | 5 | 24 |
| 5310-00-614-3552 | 12 | 30 | | 7 | 30 |
| 6625-00-618-9291 | 5 | 3 | 5310-00-933-8120 | 2 | 18 |
| 5306-00-637-9674 | 2 | 48 | | 5 | 37 |
| 6625-00-643-1792 | 5 | 5 | | 6 | 9 |
| 5310-00-685-3744 | 2 | 43 | | 7 | 22 |
| | 5 | 23 | | 8 | 49 |
| | 7 | 29 | | 10 | 21 |
| | 9 | 40 | | 11 | 18 |
| | 12 | 33 | | 12 | 17 |
| | 13 | 7 | | 13 | 40 |
| 5305-00-701-5061 | 2 | 44 | 5310-00-933-8121 | 2 | 40 |
| 5305-00-702-4523 | 9 | 35 | | 9 | 34 |
| | 11 | 27 | | 10 | 22 |
| 5310-00-754-4337 | 11 | 35 | | 11 | 24 |
| 5310-00-761-6882 | 2 | 26 | 5310-00-934-9747 | 2 | 52 |
| | 12 | 25 | 5310-00-934-9748 | 5 | 43 |
| | 13 | 33 | | 8 | 41 |
| 5305-00-763-6963 | 5 | 26 | 5310-00-934-9751 | 8 | 48 |
| 5310-00-768-0319 | 12 | 10 | | 11 | 20 |
| 5305-00-768-0336 | 2 | 51 | | 13 | 36 |
| 5905-00-775-0633 | 15 | 25 | 5310-00-934-9759 | 2 | 28 |
| 5310-00-782-1349 | 2 | 50 | | 5 | 25 |
| | 5 | 41 | | 7 | 31 |
| | 8 | 43 | | 9 | 39 |

NATIONAL STOCK NUMBER AND PART NUMBER INDEX

| | | NATIONAL STOCK NUMBER INDEX | | | |
|------------------|------|-----------------------------|--------------|------|------|
| STOCK NUMBER | FIG. | ITEM | STOCK NUMBER | FIG. | ITEM |
| 5310-00-934-9761 | 3 | 10 | | | |
| 5310-00-934-9765 | 2 | 36 | | | |
| | 5 | 38 | | | |
| | 6 | 10 | | | |
| | 7 | 23 | | | |
| | 8 | 40 | | | |
| | 10 | 15 | | | |
| | 11 | 19 | | | |
| | 12 | 18 | | | |
| | 13 | 39 | | | |
| 5310-00-934-9766 | 7 | 33 | | | |
| 5961-00-935-0129 | 12 | 2 | | | |
| 5310-00-939-0903 | 9 | 10 | | | |
| 5310-00-939-2653 | 2 | 21 | | | |
| 5905-00-940-2751 | 14 | 24 | | | |
| 5310-00-942-5109 | 2 | 22 | | | |
| | 2 | 27 | | | |
| | 8 | 37 | | | |
| | 9 | 8 | | | |
| | 12 | 11 | | | |
| 5310-00-942-5110 | 10 | 16 | | | |
| 5961-00-949-1440 | 14 | 13 | | | |
| | 15 | 13 | | | |
| 5961-00-957-6865 | 9 | 3 | | | |
| | 15 | 7 | | | |
| 5905-00-968-4890 | 10 | 10 | | | |
| 5935-00-972-4003 | 15 | 33 | | | |
| 5310-00-974-6623 | 2 | 46 | | | |
| 5905-00-975-1131 | 14 | 15 | | | |
| | 15 | 16 | | | |
| 5310-00-982-4999 | 2 | 49 | | | |
| | 7 | 26 | | | |
| 5310-00-982-6813 | 2 | 7 | | | |
| | 5 | 30 | | | |
| | 5 | 39A | | | |
| 5310-00-982-6814 | 2 | 56 | | | |
| | 7 | 32 | | | |
| | 9 | 38 | | | |
| | 13 | 6 | | | |
| 5305-00-984-4992 | 5 | 29 | | | |
| 5305-00-984-4993 | 9 | 23 | | | |
| 5961-00-985-8929 | 15 | 14 | | | |
| 5961-00-990-3049 | 15 | 9 | | | |
| 5305-00-993-1851 | 13 | 10 | | | |
| 5820-00-999-7292 | 15 | 36 | | | |
| 5905-01-058-7628 | 13 | 3 | | | |
| 5905-01-130-8968 | 14 | 27 | | | |
| | 15 | 31 | | | |

NATIONAL STOCK NUMBER AND PART NUMBER INDEX

| FSCM | PART NUMBER | PART NUMBER INDEX | | ITEM |
|-------|---------------|-------------------|------|------|
| | | STOCK NUMBER | FIG. | |
| 74193 | AM12MG3-25-77 | | 5 | 2 |
| 88044 | AN960-10 | 5310-00-167-0818 | 2 | 9 |
| 88044 | AN960-416 | 5310-00-141-1795 | 2 | 39 |
| | | | 12 | 19A |
| 88044 | AN960C10 | 5310-00-167-0801 | 7 | 21 |
| 96906 | AN960C10L | 5310-00-167-0812 | 2 | 19 |
| | | | 5 | 36 |
| | | | 6 | 13 |
| | | | 8 | 46 |
| | | | 10 | 20 |
| | | | 11 | 17 |
| | | | 12 | 16 |
| | | | 13 | 34 |
| 88044 | AN960C416 | 5310-00-531-9515 | 10 | 8 |
| | | | 11 | 25 |
| | | | 12 | 13 |
| 88044 | AN960C516 | 5310-00-167-0803 | 2 | 47 |
| 88044 | AN960C8 | 5310-00-685-3744 | 2 | 43 |
| | | | 5 | 23 |
| | | | 7 | 29 |
| | | | 9 | 40 |
| | | | 12 | 33 |
| | | | 13 | 7 |
| 88044 | AN961-10 | 5310-00-264-1390 | 7 | 35 |
| 88044 | AN961-10T | | 2 | 25 |
| | | | 5 | 33 |
| | | | 9 | 21 |
| | | | 12 | 27 |
| | | | 13 | 32 |
| 88044 | AN961-101 | | 11 | 22 |
| 88044 | AN961-4T | | 2 | 34 |
| 88044 | AN961-416T | | 2 | 55 |
| | | | 8 | 38 |
| | | | 9 | 15 |
| 88044 | AN961-6T | 5310-00-136-1472 | 2 | 54 |
| | | | 8 | 13 |
| | | | 9 | 13 |
| | | | 11 | 32 |
| 81541 | APL53-518-1 | 5925-00-220-3530 | 5 | 2 |
| 06045 | A05517005 | | 5 | 4 |
| 03481 | A10-130 | | 4 | 4 |
| | | | 6 | 2 |
| | | | 8 | 33 |
| | | | 10 | 1 |
| 03481 | A10-230 | | 4 | 10 |
| | | | 8 | 47 |
| 14726 | B4112B | | 13 | 16 |
| 81349 | CL65CG181MP3 | | 15 | 1 |
| 81349 | CP12A1KC474K | | 6 | 5 |
| | | | 9 | 5 |
| 81349 | CQ09A1MB475K3 | | 5 | 7 |

NATIONAL STOCK NUMBER AND PART NUMBER INDEX

| FSCM | PART NUMBER | PART NUMBER INDEX | |
|-------|------------------|-------------------|-----------|
| | | STOCK NUMBER | FIG. ITEM |
| 81349 | CTM014VBK | | 14 2 |
| 81349 | CTM104VBJ | 5910-00-835-2953 | 15 2 |
| 81349 | CTM224VBJ | 5910-00-835-2961 | 14 4 |
| | | | 15 4 |
| 81349 | C003H0F3-12-0625 | | 8 16 |
| 73445 | C426ARG50 | | 14 6 |
| 00098 | C437ARF160 | | 14 1 |
| 00098 | C437ARH100 | | 14 3 |
| 09214 | C6A | 5961-00-869-4857 | 14 31 |
| 80063 | ES-C-202264 | | 2 6 |
| 02294 | GF7390-1 | | 8 25 |
| 81349 | JAN1N1186 | 5961-00-833-3042 | 12 4 |
| 81349 | JAN1N1186R | 5961-00-935-0129 | 12 2 |
| 81349 | JAN1N3611 | 5961-00-957-6865 | 9 3 |
| | | | 9 3 |
| | | | 15 7 |
| 81349 | JAN1N4965 | 5961-00-227-9770 | 15 10 |
| 81349 | JAN1N935 | | 14 9 |
| 81349 | JAN1N935B | 5961-00-990-3049 | 15 9 |
| 81349 | JAN1N937B | 5961-00-226-5134 | 15 8 |
| 81349 | JAN2N1711 | 5961-00-054-0046 | 14 12 |
| | | | 15 12 |
| 81349 | JAN2N1910W | | 9 16 |
| 81349 | JAN2N2027 | 5961-00-115-8469 | 8 30 |
| 81349 | JAN2N2324 | 5961-00-985-8929 | 15 14 |
| 81349 | JAN2N2905A | 5961-00-949-1440 | 14 13 |
| | | | 15 13 |
| 81349 | JAN2N491A | 5961-00-926-2569 | 15 11 |
| 81483 | KSA3T2AD | | 12 32 |
| 81349 | MR36W050DCVVR | 6625-00-643-1792 | 5 5 |
| 81349 | MR36W080DCAAR | 6625-00-618-9291 | 5 3 |
| 96906 | MS15795-804 | 5310-00-782-1349 | 2 50 |
| | | | 5 41 |
| | | | 8 43 |
| 96906 | MS15795-806 | 5310-00-880-5976 | 3 9 |
| | | | 5 28 |
| 96906 | MS16106-1 | 5930-00-519-8144 | 4 11 |
| 96906 | MS16214-21 | | 7 34 |
| 96906 | MS16228-4C | 5310-00-245-8825 | 10 23 |
| 96906 | MS18012-5 | 5340-00-801-2957 | 6 11 |
| | | | 10 11 |
| 96906 | MS20659-107 | 5940-00-113-9824 | 13 28 |
| 96906 | MS20659-111 | 5940-00-115-2678 | 12 37 |
| 96906 | MS20659-144 | 5940-00-115-2677 | 12 38 |
| 96906 | MS21044C04 | 5310-00-982-4999 | 2 49 |
| | | | 7 26 |
| 96906 | MS21044C06 | 5310-00-982-6813 | 2 7 |
| | | | 5 30 |
| | | | 5 39A |
| 96906 | MS21044C08 | 5310-00-982-6814 | 2 56 |
| | | | 7 32 |

NATIONAL STOCK NUMBER AND PART NUMBER INDEX

| FSCM | PART NUMBER | PART NUMBER INDEX | | ITEM |
|-------|--------------|-------------------|------|------|
| | | STOCK NUMBER | FIG. | |
| 96906 | MS21044C08 | 5310-00-982-6814 | 9 | 38 |
| | | | 13 | 6 |
| 96906 | MS21044C3 | 5310-00-208-9255 | 2 | 38 |
| | | | 7 | 25 |
| | | | 13 | 18 |
| 96906 | MS24693C27 | 5305-00-066-7328 | 4 | 1 |
| | | | 5 | 39 |
| 96906 | MS24693C272 | 5305-00-051-0227 | 7 | 12 |
| 96906 | MS25036-103 | 5940-00-143-4771 | 6 | 4 |
| | | | 13 | 29 |
| 96906 | MS25036-111 | 5940-00-204-8990 | 8 | 14 |
| 96906 | MS25036-112 | 5940-00-143-4794 | 8 | 15 |
| | | | 10 | 14 |
| 96906 | MS25036-116 | 5940-00-114-1305 | 13 | 27 |
| 96906 | MS25043-22C | | 8 | 8 |
| 96906 | MS3102R22-2S | 5935-00-850-5593 | 8 | 11 |
| 96906 | MS3367-5-9 | 5975-00-111-3208 | 13 | 20 |
| 96906 | MS35206-230 | 5305-00-889-3000 | 11 | 33 |
| 96906 | MS35206-232 | 5305-00-984-4992 | 5 | 29 |
| 96906 | MS35206-233 | 5305-00-984-4993 | 9 | 23 |
| 96906 | MS35207-267 | 5305-00-993-1851 | 13 | 10 |
| 96906 | MS35291-25 | | 13 | 42 |
| 96906 | MS35307-305 | 5305-00-021-3616 | 2 | 41 |
| 96906 | MS35307-306 | 5305-00-702-4523 | 9 | 35 |
| | | | 11 | 27 |
| 96906 | MS35307-308 | 5305-00-207-8253 | 9 | 46 |
| | | | 11 | 26 |
| 96906 | MS35307-336 | 5306-00-637-9674 | 2 | 48 |
| 96906 | MS35333-105 | 5310-00-019-0669 | 11 | 37 |
| 96906 | MS35333-107 | 5310-00-019-0672 | 2 | 29 |
| 96906 | MS35335-59 | 5310-00-614-3552 | 12 | 30 |
| 96906 | MS35335-75 | 5310-00-942-5109 | 2 | 27 |
| 96906 | MS35335-86 | 5310-00-939-0903 | 9 | 10 |
| 96906 | MS35335-88 | 5310-00-942-5110 | 10 | 16 |
| 96906 | MS35335-89 | 5310-00-942-5109 | 2 | 22 |
| | | | 8 | 37 |
| | | | 9 | 8 |
| | | | 12 | 11 |
| 96906 | MS35338-100 | | 5 | 32 |
| | | | 9 | 20 |
| 96906 | MS35338-135 | 5310-00-933-8118 | 5 | 42 |
| | | | 8 | 42 |
| 96906 | MS35338-136 | 5310-00-929-6395 | 3 | 8 |
| | | | 5 | 27 |
| 96906 | MS35338-137 | 5310-00-933-8119 | 2 | 42 |
| | | | 5 | 24 |
| | | | 7 | 30 |
| 96906 | MS35338-138 | 5310-00-933-8120 | 2 | 18 |
| | | | 5 | 37 |
| | | | 6 | 9 |
| | | | 7 | 22 |

NATIONAL STOCK NUMBER AND PART NUMBER INDEX

| FSCM | PART NUMBER | PART NUMBER INDEX | | ITEM |
|-------|--------------|-------------------|-------|-------------|
| | | STOCK NUMBER | FIG. | |
| 96906 | MS35338-138 | 5310-00-933-8120 | 8 | 49 |
| | | | 10 | 21 |
| | | | 11 | 18 |
| | | | 12 | 17 |
| | | | 13 | 40 |
| 96906 | MS35338-139 | 5310-00-933-8121 | 2 | 40 |
| | | | 9 | 34 |
| | | | 10 | 22 |
| | | | 11 | 24 |
| | | | 11 | 24 |
| 96906 | MS35338-140 | 5310-00-974-6623 | 2 | 46 |
| 96906 | MS35338-41 | 5310-00-045-4007 | 2 | 53 |
| 96906 | MS35338-44 | 5310-00-582-5965 | 11 | 31 |
| | | | 12 | 26 |
| 96906 | MS35338-98 | 5310-00-184-8977 | 13 | 43 |
| | | | 8 | 51 |
| 96906 | MS35649-2254 | 5310-00-250-9477 | 9 | 33 |
| 96906 | MS35649-2314 | 5310-00-245-3615 | 11 | 23 |
| | | | 2 | 45 |
| 96906 | MS35649-244 | 5310-00-934-9748 | 5 | 43 |
| 96906 | MS35649-262 | 5310-00-934-9747 | 8 | 41 |
| | | | 2 | 52 |
| 96906 | MS35649-264 | 5310-00-934-9761 | 3 | 10 |
| 96906 | MS35649-265T | 5310-00-410-3016 | 9 | 11 |
| 96906 | MS35649-284 | 5310-00-934-9759 | 2 | 28 |
| | | | 5 | 25 |
| | | | 7 | 31 |
| | | | 9 | 39 |
| | | | 12 | 29 |
| | | | 11 | 30 |
| | | | 8 | 48 |
| | | | 11 | 20 |
| | | | 13 | 36 |
| | | | 2 | 36 |
| 96906 | MS35649-285T | 5310-00-934-9751 | 5 | 38 |
| | | | 6 | 10 |
| 96906 | MS35650-304 | 5310-00-934-9765 | 7 | 23 |
| | | | 8 | 40 |
| | | | 10 | 15 |
| | | | 11 | 19 |
| | | | 12 | 18 |
| | | | 13 | 39 |
| | | | 7 | 33 |
| | | | 5 | 31 |
| | | | 9 | 17 |
| | | | 12 | 28 |
| | | | 13 | 14 |
| | | | 13 | 44 |
| | | | 96906 | MS35650-305 |
| 96906 | MS35650-305T | 5310-00-410-3025 | 9 | 19 |
| 96906 | MS35650-402 | 5310-00-761-6882 | 9 | 17A |
| | | | 9 | 17A |
| 96906 | MS35690-402 | 5310-00-761-6882 | 2 | 26 |
| 96906 | MS36649-262 | 5310-00-761-6882 | 9 | 19 |
| 96906 | MS36649-265T | 5310-00-761-6882 | 9 | 17A |
| 96906 | MS45901-5 | 5310-00-754-4337 | 11 | 35 |

NATIONAL STOCK NUMBER AND PART NUMBER INDEX

| FSCM | PART NUMBER | PART NUMBER INDEX | |
|-------|----------------|-------------------|-----------|
| | | STOCK NUMBER | FIG. ITEM |
| 96906 | MS51957-15 | 5305-00-054-5649 | 2 57 |
| | | | 5 40 |
| 96906 | MS51957-17 | 5305-00-054-5651 | 7 27 |
| 96906 | MS51957-18 | | 8 44 |
| 96906 | MS51957-31 | 5305-00-054-6655 | 3 11 |
| 96906 | MS51957-32 | 5305-00-054-6656 | 3 7 |
| 96906 | MS51957-45 | 5305-00-054-6670 | 5 22 |
| 96906 | MS51957-48 | 5305-00-054-6673 | 13 8 |
| 96906 | MS51957-49 | 5305-00-054-6674 | 7 28 |
| 96906 | MS51957-58 | | 12 12 |
| 96906 | MS51958-45 | 5305-00-701-5061 | 2 44 |
| 96906 | MS51958-63 | 5305-00-059-3659 | 5 35 |
| | | | 7 20 |
| | | | 8 23 |
| | | | 10 19 |
| 96906 | MS51958-64 | 5305-00-059-3660 | 2 20 |
| | | | 6 8 |
| | | | 10 18 |
| | | | 11 28 |
| | | | 12 15 |
| 96906 | MS51958-65 | 5305-00-059-3661 | 2 17 |
| | | | 6 12 |
| | | | 7 24 |
| 96906 | MS51958-66 | 5305-00-059-3662 | 2 37 |
| | | | 8 45 |
| | | | 11 29 |
| | | | 12 6 |
| 96906 | MS51958-67 | | 13 35 |
| 96906 | MS51958-69 | 5305-00-059-3665 | 8 35 |
| 96906 | MS51958-70 | 5305-00-059-3666 | 8 39 |
| 96906 | MS51959-17 | 5305-00-768-0336 | 2 51 |
| 96906 | MS51959-28 | 5305-00-763-6963 | 5 26 |
| 96906 | MS51967-2 | 5310-00-761-6882 | 12 25 |
| | | | 13 33 |
| 96906 | MS51968-2 | 5310-00-768-0319 | 12 10 |
| 96906 | MS51969-1 | 5310-00-939-2653 | 2 21 |
| | | | 8 36 |
| 96906 | MS90725-10 | 5305-00-071-2241 | 11 34 |
| 96906 | MS90726-21 | | 12 35 |
| 96906 | MS91586-4 | 6625-00-197-2365 | 13 5 |
| 80063 | M109197-1 | | 14 34 |
| 02294 | M111545-1 | 5999-00-220-5239 | 14 33 |
| 80063 | M111586-1 | | 9 24 |
| 81349 | M22684-02-0010 | | 9 28 |
| 81349 | M22684-02-0036 | | 9 6 |
| 81349 | M22684-02-0082 | | 15 20 |
| 81349 | M22684-02-0086 | 5905-00-775-0633 | 15 25 |
| 81349 | M22684-02-0088 | | 14 17 |
| | | | 14 23 |
| 81349 | M22684-02-0098 | | 14 16 |
| 81349 | M22684-02-0112 | | 14 25 |

NATIONAL STOCK NUMBER AND PART NUMBER INDEX

| FSCM | PART NUMBER | PART NUMBER INDEX | |
|-------|------------------|-------------------|-----------|
| | | STOCK NUMBER | FIG. ITEM |
| 81349 | M22684-02-0112 | | 15 26 |
| 81349 | M22684-02-0114 | | 14 22 |
| 81349 | M22684-02-0118 | | 5 13 |
| 81349 | M22684-02-0122 | | 14 26 |
| 81349 | M22684-04-0088 | | 15 18 |
| 81349 | M22684-04-0098 | | 15 17 |
| 81349 | M39003-01-2071 | | 15 5 |
| 81349 | M39015/1-004PP | 5905-00-039-9528 | 15 30 |
| 81349 | M39015/1-005PP | 5905-00-099-9596 | 15 28 |
| 81349 | M39022-01-1621 | 5910-00-323-9325 | 15 6 |
| 70117 | P33A20 | | 14 35 |
| 81349 | RA20LASB103A | 5905-00-577-3656 | 5 6 |
| 81349 | RA20LASB502A | 5905-00-577-7341 | 5 14 |
| 81349 | RCR20G2R7JS | | 14 14 |
| 81349 | RCR20G224JS | 5905-00-114-5393 | 14 21 |
| | | | 15 22 |
| 81349 | RCR20G4R7JS | 5905-00-126-6705 | 15 15 |
| 81349 | RLR20C1000GR | 5905-00-926-8706 | 14 30 |
| | | | 15 32 |
| 81349 | RLR20C1001GR | 5905-00-926-8708 | 14 18 |
| | | | 15 19 |
| 81349 | RLR20C2201GR | | 15 23 |
| 81349 | RLR20C3300GS | 5905-01-130-8968 | 14 27 |
| | | | 15 31 |
| 81349 | RLR20C3301GR | | 15 27 |
| 81349 | RLR20C4700GR | | 14 19 |
| 81349 | RLR20C51R0GR | 5905-00-194-0481 | 14 20 |
| | | | 15 21 |
| 81349 | RLR20C5600GR | 5905-00-940-2751 | 14 24 |
| 81349 | RLR20C6200GR | | 15 24 |
| 81349 | RLR20C6800GR | 5905-00-196-7213 | 14 28 |
| | | | 15 29 |
| 81349 | RL42S272GTX | 5905-01-058-7628 | 13 3 |
| 91637 | RS500B22100F | | 13 15 |
| 81349 | RW35V750 | 5905-00-894-0174 | 9 44 |
| 81349 | RW38V8R2 | 5905-00-968-4890 | 10 10 |
| 81349 | RW68V750 | 5905-00-975-1131 | 14 15 |
| | | | 15 16 |
| 80063 | SM-A-640040 | | 8 12 |
| 80063 | SM-A-977598-215 | | 2 35 |
| 80063 | SM-A-977598-228 | | 8 50 |
| 80063 | SM-A-977598-232 | | 9 30 |
| 80063 | SM-A-977598-234 | | 9 12 |
| 80063 | SM-A-977598-285 | | 9 14 |
| 80063 | SM-A-977598-344 | | 8 18 |
| 80063 | SM-A-977599-2255 | | 9 9 |
| | | | 11 36 |
| 80063 | SM-A-977599-245 | | 2 32 |
| 80063 | SM-A-977599-265 | | 8 52 |
| 80063 | SM-A-977600-263 | | 9 18 |
| 80063 | SM-A-977600-268 | | 5 34 |

NATIONAL STOCK NUMBER AND PART NUMBER INDEX

| FSCM | PART NUMBER | PART NUMBER INDEX | |
|-------|-----------------|-------------------|-----------|
| | | STOCK NUMBER | FIG. ITEM |
| 80063 | SM-A-977601-303 | | 11 21 |
| 80063 | SM-A-977601-305 | | 2 23 |
| 80063 | SM-A-977602-100 | | 2 24 |
| | | | 13 31 |
| 80063 | SM-A-977602-97 | | 2 33 |
| 80063 | SM-A-977604 | | 9 32 |
| 80063 | SM-B-633302 | | 8 3 |
| 80063 | SM-B-633303 | | 8 17 |
| 80063 | SM-B-633304 | 5999-00-008-7479 | 8 19 |
| 80063 | SM-B-633311 | | 11 13 |
| 80063 | SM-B-633313 | | 13 12 |
| 80063 | SM-B-633318 | | 5 20 |
| 80063 | SM-B-633321 | | 8 27 |
| 80063 | SM-B-633325 | | 8 20 |
| 80063 | SM-B-633326 | | 5 9 |
| 80063 | SM-B-633327 | | 9 27 |
| 80063 | SM-B-633329 | | 4 2 |
| 80063 | SM-B-63332-1 | | 13 26 |
| 80063 | SM-B-633332-2 | | 13 30 |
| 80063 | SM-B-633335 | | 5 17 |
| 80063 | SM-B-633339-1 | | 12 19 |
| 80063 | SM-B-633339-3 | | 12 36 |
| 80063 | SM-B-633340 | | 12 5 |
| 80063 | SM-B-633342 | | 8 9 |
| 80063 | SM-B-633346 | | 11 11 |
| 80063 | SM-B-633347 | | 11 15 |
| 80063 | SM-B-633351 | | 5 8 |
| 80063 | SM-B-633352 | | 12 7 |
| 80063 | SM-B-633358 | 5935-00-972-4003 | 15 33 |
| 80063 | SM-B-633359 | | 5 21 |
| 80063 | SM-B-633360 | | 5 1 |
| 80063 | SM-B-633361 | 5970-00-009-0200 | 2 11 |
| 80063 | SM-B-633362 | | 2 12 |
| 80063 | SM-B-633363 | | 2 13 |
| 80063 | SM-B-633364 | | 13 19 |
| 80063 | SM-B-633372 | | 7 3 |
| 80063 | SM-B-640005 | | 8 3 |
| 80063 | SM-B-640006 | | 9 7 |
| 80063 | SM-B-640007 | | 9 29 |
| 80063 | SM-B-640008 | | 9 1 |
| 80063 | SM-B-640009 | | 8 6 |
| 80063 | SM-B-640010 | | 9 25 |
| 80063 | SM-B-640011 | | 8 17 |
| 80063 | SM-B-640015 | | 5 12 |
| 80063 | SM-B-640017 | | 10 4 |
| 80063 | SM-B-640020 | | 7 14 |
| 80063 | SM-B-640021 | | 7 18 |
| 80063 | SM-B-640024 | | 12 9 |
| 80063 | SM-B-640025 | | 11 8 |
| 80063 | SM-B-640026 | | 11 6 |
| 80063 | SM-B-640027 | | 11 7 |

NATIONAL STOCK NUMBER AND PART NUMBER INDEX

| FSCM | PART NUMBER | PART NUMBER INDEX | |
|-------|---------------|-------------------|-----------|
| | | STOCK NUMBER | FIG. ITEM |
| 80063 | SM-B-640028 | | 11 13 |
| 80063 | SM-B-640030 | | 13 1 |
| 80063 | SM-B-640031 | | 13 17 |
| 80063 | SM-B-640032 | | 13 12 |
| 80063 | SM-B-640035 | | 8 26 |
| 80063 | SM-B-640036 | | 8 24 |
| 80063 | SM-B-640041 | | 10 17 |
| 80063 | SM-B-640041-1 | | 10 13 |
| 80063 | SM-B-640042 | | 1 6 |
| 80063 | SM-B-640045 | | 2 14 |
| 80063 | SM-B-640048-1 | | 9 2 |
| 80063 | SM-B-640048-2 | | 5 11 |
| | | | 13 2 |
| 80063 | SM-B-640048-3 | | 9 4 |
| 80063 | SM-B-640050 | | 8 22 |
| 80063 | SM-B-640051 | | 8 21 |
| 80063 | SM-B-640053 | | 15 35 |
| 80063 | SM-B-640056 | | 8 4 |
| 80063 | SM-B-640058 | | 12 31 |
| 80063 | SM-B-640064 | | 5 19 |
| 80063 | SM-B-640065 | | 9 36 |
| 80063 | SM-B-640066 | | 8 20 |
| 80063 | SM-B-640069 | | 5 16 |
| 80063 | SM-B-640072 | | 5 15 |
| 80063 | SM-B-640074 | | 9 31 |
| 80063 | SM-B-640075 | | 9 27 |
| 80063 | SM-B-640077 | | 10 3 |
| 80063 | SM-B-640078 | | 10 9 |
| 80063 | SM-B-640079 | | 9 41 |
| 80063 | SM-B-640088 | | 13 24 |
| 80063 | SM-B-640089 | | 12 23 |
| | | | 13 25 |
| 80063 | SM-B-640090 | | 12 22 |
| | | | 13 23 |
| 80063 | SM-B-640091-1 | | 13 22 |
| 80063 | SM-B-640091-2 | | 12 21 |
| 80063 | SM-B-640101-1 | | 12 19 |
| 80063 | SM-B-640101-2 | | 12 36 |
| 80063 | SM-B-640102 | | 12 24 |
| 80063 | SM-B-640104 | | 12 8 |
| 80063 | SM-B-640106-2 | | 10 6 |
| 80063 | SM-B-640107 | 5995-00-008-7459 | 2 31 |
| 80063 | SM-B-640113 | | 4 8 |
| 80063 | SM-B-640116 | | 13 38 |
| 80063 | SM-B-640117 | | 8 12 |
| 80063 | SM-B-640119 | | 9 22 |
| 80063 | SM-B-640120-1 | 5305-00-001-4872 | 9 26 |
| | | | 12 34 |
| 80063 | SM-B-640120-2 | 5305-00-001-4873 | 7 15 |
| 80063 | SM-B-640126 | | 7 19 |
| 80063 | SM-B-640127 | | 7 1 |

NATIONAL STOCK NUMBER AND PART NUMBER INDEX

| FSCM | PART NUMBER | PART NUMBER INDEX | |
|-------|---------------|-------------------|-----------|
| | | STOCK NUMBER | FIG. ITEM |
| 80063 | SM-B-640128 | | 7 6 |
| 80063 | SM-B-640129-1 | | 7 16 |
| 80063 | SM-B-640129-2 | | 7 17 |
| 80063 | SM-B-640130 | | 7 11 |
| 80063 | SM-B-640134 | | 3 2 |
| 80063 | SM-B-640135 | 5820-00-179-3150 | 7 5 |
| 80063 | SM-B-640136 | | 10 5 |
| 80063 | SM-B-640137 | | 5 10 |
| 80063 | SM-B-640137-3 | | 13 21 |
| 80063 | SM-B-640137-4 | | 11 9 |
| 80063 | SM-B-640138 | 5307-00-187-6421 | 13 41 |
| 80063 | SM-B-640139 | 5307-00-187-6423 | 13 13 |
| 80063 | SM-B-640140-1 | | 8 2 |
| | | | 13 9 |
| 80063 | SM-B-640140-2 | | 8 7 |
| 80063 | SM-B-640141 | | 11 12 |
| 80063 | SM-B-640142 | | 11 11 |
| 80063 | SM-B-640143 | | 11 1 |
| 80063 | SM-B-640144 | | 11 14 |
| 80063 | SM-B-640146-1 | | 11 4 |
| 80063 | SM-B-640146-2 | | 11 16 |
| 80063 | SM-B-640149 | | 12 20 |
| 80063 | SM-B-640154 | | 9 42 |
| 80063 | SM-B-640156 | | 8 5 |
| 80063 | SM-B-640158 | | 2 15 |
| 80063 | SM-B-640171 | | 14 5 |
| 80063 | SM-B-640177 | | 1 8 |
| 80063 | SM-B-640180 | | 2 16 |
| 80063 | SM-B-977603 | | 12 14 |
| 80063 | SM-B-977605 | | 6 6 |
| 80063 | SM-C-633306 | | 1 10 |
| 80063 | SM-C-633307 | | 1 3 |
| 80063 | SM-C-633309 | | 11 10 |
| 80063 | SM-C-633310 | | 12 9 |
| 80063 | SM-C-633312 | | 11 3 |
| 80063 | SM-C-633320 | | 2 5 |
| 80063 | SM-C-633330 | | 4 3 |
| 80063 | SM-C-633337 | | 13 11 |
| 80063 | SM-C-633365 | | 9 47 |
| 80063 | SM-C-633368 | | 8 31 |
| 80063 | SM-C-640002 | | 1 4 |
| 80063 | SM-C-640003 | 4140-01-169-1697 | 3 5 |
| 80063 | SM-C-640016 | | 1 10 |
| 80063 | SM-C-640018 | | 1 3 |
| 80063 | SM-C-640019 | | 6 3 |
| 80063 | SM-C-640023 | | 11 10 |
| 80063 | SM-C-640029 | | 11 3 |
| 80063 | SM-C-640034 | | 2 4 |
| 80063 | SM-C-640038 | | 11 5 |
| 80063 | SM-C-640054 | | 8 28 |
| 80063 | SM-C-640057 | | 8 29 |

NATIONAL STOCK NUMBER AND PART NUMBER INDEX

| FSCM | PART NUMBER | PART NUMBER INDEX | |
|-------|---------------|-------------------|-----------|
| | | STOCK NUMBER | FIG. ITEM |
| 80063 | SM-C-640067 | | 1 7 |
| 80063 | SM-C-640071 | | 3 3 |
| 80063 | SM-C-640082 | | 4 6 |
| 80063 | SM-C-640083-1 | | 4 5 |
| 80063 | SM-C-640083-2 | | 4 7 |
| 80063 | SM-C-640093 | | 3 4 |
| 80063 | SM-C-640099 | | 13 11 |
| 80063 | SM-C-640122 | | 7 10 |
| 80063 | SM-C-640123 | | 7 7 |
| 80063 | SM-C-640125 | | 7 13 |
| 80063 | SM-C-640155 | 5905-00-048-5165 | 2 2 |
| 80063 | SM-D-633301 | | 1 5 |
| 80063 | SM-D-633305 | | 1 2 |
| 80063 | SM-D-633308 | | 1 1 |
| 80063 | SM-D-633314 | | 11 5 |
| 80063 | SM-D-633315 | | 2 4 |
| 80063 | SM-D-633316 | | 8 26 |
| 80063 | SM-D-633317 | | 2 1 |
| 80063 | SM-D-633319 | | 4 9 |
| 80063 | SM-D-633323 | | 5 18 |
| 80063 | SM-D-633324 | | 8 1 |
| 80063 | SM-D-633324-1 | | 8 32 |
| 80063 | SM-D-633328 | | 10 2 |
| 80063 | SM-D-633328-1 | | 10 12 |
| 80063 | SM-D-633331 | 5950-00-133-8953 | 13 4 |
| 80063 | SM-D-633333 | | 6 1 |
| 80063 | SM-D-633333-1 | | 6 7 |
| 80063 | SM-D-633336 | | 15 34 |
| 80063 | SM-D-633338 | | 11 2 |
| 80063 | SM-D-633343 | | 8 25 |
| 80063 | SM-D-633353 | 5820-00-179-3149 | 2 10 |
| 80063 | SM-D-640004 | | 1 5 |
| 80063 | SM-D-640013 | | 1 2 |
| 80063 | SM-D-640014 | | 5 8 |
| | | | 5 14 |
| 80063 | SM-D-640022 | | 1 1 |
| 80063 | SM-D-640033 | | 2 1 |
| 80063 | SM-D-640037 | 5995-01-147-4605 | 7 2 |
| 80063 | SM-D-640047 | | 3 1 |
| 80063 | SM-D-640047-1 | | 3 6 |
| 80063 | SM-D-640049 | | 2 5 |
| 80063 | SM-D-640063 | | 8 1 |
| 80063 | SM-D-640068-1 | | 12 1 |
| 80063 | SM-D-640068-2 | | 12 3 |
| 80063 | SM-D-640076 | | 10 2 |
| 80063 | SM-D-640086 | 5950-00-246-4524 | 13 4 |
| 80063 | SM-D-640092 | | 6 1 |
| 80063 | SM-D-640100 | 5950-00-133-8940 | 11 2 |
| 80063 | SM-D-640124 | | 7 4 |
| 80063 | SM-D-640145 | | 11 15 |
| 80063 | SM-D-640157 | | 1 9 |

NATIONAL STOCK NUMBER AND PART NUMBER INDEX

| FSCM | PART NUMBER | PART NUMBER INDEX | |
|-------|------------------|-------------------|-----------|
| | | STOCK NUMBER | FIG. ITEM |
| 80063 | SM-D-640159 | 5999-00-878-6660 | 2 10 |
| 06383 | SSC2 | | 2 3 |
| 06751 | UZ720 | | 14 10 |
| 44655 | 0400E | 5905-00-100-4868 | 9 44 |
| 81349 | 1N4003 | | 14 7 |
| 81349 | 1N937A | | 14 8 |
| 19200 | 10554157 | 5961-00-116-6553 | 14 11 |
| 81483 | 18DB2A | 5961-00-410-5128 | 14 32 |
| 96733 | 18M2474DG | 5910-00-878-8512 | 9 5 |
| 80131 | 2N2026 | | 8 30 |
| 96791 | 261BP1K | | 14 29 |
| 73734 | 28220 | | 2 30 |
| 04013 | 30-40 | 4920-00-420-9449 | 7 9 |
| 56699 | 3073GG101T063JPB | 5910-00-534-7737 | 15 3 |
| 74545 | 3331 | 5935-00-849-4578 | 8 10 |
| 71468 | 60-6007-48-28 | | 7 8 |
| 44655 | 6001 | | 9 43 |
| 44655 | 6017 | 5970-00-281-0899 | 10 7 |
| 81861 | 6700-0282-0006 | | 8 9 |
| 04946 | 703-28 | | 8 16 |
| 80045 | 813360 | 5820-00-999-7292 | 15 36 |
| 63743 | 922N | | 9 37 |

By Order of the Secretary of the Army:

Official:

DONALD J. DELANDRO
Brigadier General United States Army
The Adjutant General

JOHN A. WICKMAN JR.
General United States Army
Chief of Staff

DISTRIBUTION:

To be distributed in accordance with DA Form 12-51, Direct and General Support Maintenance requirements for PP-4763/GRC.

RECOMMENDED CHANGES TO EQUIPMENT TECHNICAL PUBLICATIONS



THEN... JOT DOWN THE DOPE ABOUT IT ON THIS FORM. CAREFULLY TEAR IT OUT. FOLD IT AND DROP IT IN THE MAIL!

SOMETHING WRONG WITH THIS PUBLICATION?

FROM (PRINT YOUR UNIT'S COMPLETE ADDRESS)
 Commander
 Stateside Army Depot
 ATTN: AMSTA-US
 Stateside, N.J. 07703-5007

DATE SENT
 10 July 1975

| | | |
|--|-------------------------------|--|
| PUBLICATION NUMBER TM 11-5840-340-20P | PUBLICATION DATE 23 Jan 78 | PUBLICATION TITLE Radar Set AN/PRC-76 |
|--|-------------------------------|--|

| BE EXACT PIN-POINT WHERE IT IS | | | | IN THIS SPACE TELL WHAT IS WRONG AND WHAT SHOULD BE DONE ABOUT IT: |
|--------------------------------|------------|-----------|----------|---|
| PAGE NO | PARA-GRAPH | FIGURE NO | TABLE NO | |
| 33 | | | | For item 2, change the NSN to read: 5835-00-134-9186. Reason: Accuracy. |
| 44 | | 19 | | Identify the cover on the junction box (item no. 5). Reason: It is a separate item and is not called out on figure 19. |
| 45 | | | | Add the cover of the junction box as an item in the listing for figure 19. Reason: Same as above |

SAMPLE

TEAR ALONG PERFORATED LINE

PRINTED NAME, GRADE OR TITLE, AND TELEPHONE NUMBER
 SSG I. M. DeSpirit of 999-1776

SIGN HERE

FILL IN YOUR
UNIT'S ADDRESS

FOLD BACK

DEPARTMENT OF THE ARMY

OFFICIAL BUSINESS

Commander
US Army Communications-Electronics Command
and Fort Monmouth
ATTN: AMSEL-ME-MP
Fort Monmouth, New Jersey 07703-5007

TEAR ALONG PERFORATED LINE

This fine document...

Was brought to you by me:



[Liberated Manuals -- free army and government manuals](#)

Why do I do it? I am tired of sleazy CD-ROM sellers, who take publicly available information, slap “watermarks” and other junk on it, and sell it. Those masters of search engine manipulation make sure that their sites that sell free information, come up first in search engines. They did not create it... They did not even scan it... Why should they get your money? Why are not letting you give those free manuals to your friends?

I am setting this document FREE. This document was made by the US Government and is NOT protected by Copyright. Feel free to share, republish, sell and so on.

I am not asking you for donations, fees or handouts. If you can, please provide a link to liberatedmanuals.com, so that free manuals come up first in search engines:

<A HREF=<http://www.liberatedmanuals.com/>>Free Military and Government Manuals

- Sincerely
Igor Chudov
<http://igor.chudov.com/>
- [Chicago Machinery Movers](#)