

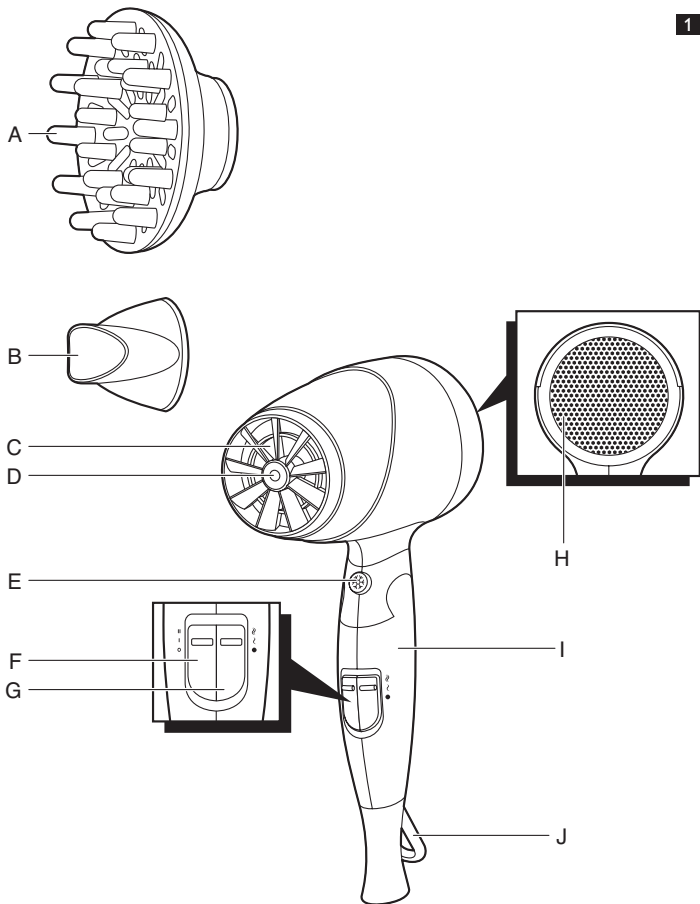
Register your product and get support at
www.philips.com/welcome

HP8203, HP8202, HP8201, HP8200



PHILIPS





HP8203, HP8202, HP8201, HP8200

ENGLISH 6

简体中文 13

Introduction

Congratulations on your purchase and welcome to Philips! To fully benefit from the support that Philips offers, register your product at www.philips.com/welcome.

The Philips SalonShine Care hairdryer (HP8201, HP8200)/Philips SalonShine Care Ion hairdryer (HP8202)/ Philips SalonShine Care Ion+ hairdryer (HP8203) has been specially designed to meet your personal needs, allowing you to dry your hair at a constant caring temperature for healthy, shiny hair. This hairdryer offers you a variety of heat and speed settings for optimal styling freedom, giving your hair the lustre, body and richness you love.

The air outlet grille of this hairdryer has been specially designed to distribute the heat evenly over your hair. It prevents damage to your hair caused by hot spots and ensures faster drying. The HP8203 and HP8202 come with an ion function that is automatically activated when you switch on the hairdryer.

General description (Fig. 1)

- A** Volume diffuser (HP8203/HP8201 only)
- B** Concentrator
- C** Air outlet grille
- D** Ion indicator light (HP8203/HP8202 only)
- E** Cool shot button
- F** Airflow slide switch
 - II = Strong airflow for quick drying
 - I = Gentle airflow specially intended for styling
 - O = Off
- G** Temperature slide switch
 - ☺ = Quick Dry setting
 - ☹ = Thermoprotect setting
 - ● = Cool shot setting
- H** Air inlet grille
- I** Foldable handle
- J** Hanging loop

Important

Read this user manual carefully before you use the appliance and save it for future reference.

Warning

- Do not use this appliance near water. Do not use this appliance near bathtubs, showers, basins or other vessels containing water (Fig. 2).
- When you use the appliance in a bathroom, unplug it after use. The proximity of water presents a risk, even when the appliance is switched off.
- Do not insert any objects into the appliance to avoid electric shock.
- Check if the voltage indicated on the appliance corresponds to the local mains voltage before you connect the appliance.
- Check the condition of the mains cord regularly. Do not use the appliance if the plug, the mains cord or the appliance itself is damaged.
- If the mains cord is damaged, you must have it replaced by Philips, a service centre authorised by Philips or similarly qualified persons in order to avoid a hazard.
- This appliance is not intended for use by persons (including children) with reduced physical, sensory or mental capabilities, or lack of experience and knowledge, unless they have been given supervision or instruction concerning use of the appliance by a person responsible for their safety.
- Children should be supervised to ensure that they do not play with the appliance.

Caution

- For additional protection, we advise you to install a residual current device (RCD) in the electrical circuit that supplies the bathroom. This RCD must have a rated residual operating current not higher than 30mA. Ask your installer for advice.
- Never block the air grilles.
- The appliance has a safety function. If the appliance overheats, it switches off automatically. Unplug the appliance and let it cool down for a few minutes. Before you switch on the appliance again, check the grilles to make sure they are not blocked by fluff, hair, etc.

8 ENGLISH

- Always switch off the appliance before you put it down, even if it is only for a moment.
- Always unplug the appliance after use.
- Do not wind the mains cord round the appliance.
- HP8203/HP8202 only: You may notice a characteristic odour when you use this hairdryer. This is caused by the ions that are generated and it is not harmful to the human body.
- Do not use the appliance on artificial hair.
- This appliance is only intended for drying scalp hair.
- Do not use the appliance for any other purpose than described in this manual.
- Keep the hairdryer clean and free of dust, dirt and styling products such as mousse, spray and gel.
- Never use any accessories or parts from other manufacturers or that are not specifically advised by Philips. If you use such accessories or parts, your guarantee becomes invalid.

Electromagnetic fields (EMF)

This Philips appliance complies with all standards regarding electromagnetic fields (EMF). If handled properly and according to the instructions in this user manual, the appliance is safe to use based on scientific evidence available today.

Using the appliance

Drying

- 1** Put the plug in the wall socket.
 - 2** Set the airflow slide switch to the desired setting to switch on the appliance (Fig. 3).
 - Set the slide switch to setting II for ultra-quick drying.
 - Set the slide switch to setting I for drying short hair or styling your hair.
- D** HP8203/HP8202 only: The ion indicator light goes on to indicate that the ion function has been activated. The ion function provides additional shine and reduces frizz and static electricity.

- 3** Set the temperature slide switch to the Quick Dry, Thermoprotect or Cool Care setting (Fig. 4).
- The Quick Dry setting ☺ dries shower-wet hair very quickly and safely. We advise you to use the Quick Dry setting only briefly to avoid dehydrating your hair.
 - The Thermoprotect setting ☻ quickly and gently dries the hair at a constant, caring temperature.
 - The Cool shot setting ● dries your hair with care and helps to seal in shine.
- 4** Dry your hair by making brushing movements with the hairdryer at a small distance from your hair (Fig. 5).

Tip: When you have finished drying, press the cool shot button and direct the cool airflow at your hair. This fixes your style and adds shine (Fig. 6).

- 5** Set the airflow slide switch to O to switch off the appliance after use (Fig. 7).

Concentrator

The concentrator enables you to direct the airflow straight at the brush or comb with which you are styling your hair.

- 1** Snap the concentrator onto the appliance (Fig. 8).
To disconnect the concentrator, pull it off the appliance.

Volume diffuser (HP8203/HP8201 only)

The volume diffuser has been specially developed to gently dry both straight and curly or wavy hair.

- 1** To connect the volume diffuser, snap it onto the appliance (Fig. 9).
To disconnect the volume diffuser, pull it off the appliance.
- 2** To add volume at the roots, insert the pins into your hair in such a way that they touch your scalp (Fig. 10).
- 3** Make rotating movements with the appliance to distribute the warm air evenly through your hair (Fig. 11).

Cleaning

Do not immerse the appliance in water or any other liquid, nor rinse it under the tap.

- 1 Switch off the appliance and unplug it.
- 2 Remove the concentrator or diffuser (HP8203/HP8201 only) before you clean the appliance.
- 3 Clean the appliance with a dry cloth.
- 4 Remove hairs and dust from the air inlet grille.
- 5 Clean the concentrator or diffuser (HP8203/HP8201 only) with a moist cloth or rinse it under the tap.
- 6 Make sure the concentrator or diffuser (HP8203/HP8201 only) is dry before you use or store it.

Storage

Do not wind the mains cord round the appliance.

- 1 Switch off the appliance and unplug it.
- 2 Put the appliance in a safe place and let it cool down.
- 3 To store the appliance or to take it with you, you can fold the handle against the body of the appliance. Gently press on the back of the handle until it folds (Fig. 12).
- 4 You can also store the appliance by hanging it from its hanging loop.

Environment

- Do not throw away the appliance with the normal household waste at the end of its life, but hand it in at an official collection point for recycling. By doing this, you help to preserve the environment (Fig. 13).

Guarantee and service

If you need service or information or if you have a problem, please visit the Philips website at **www.philips.com** or contact the Philips Consumer Care Centre in your country (you find its phone number in the worldwide guarantee leaflet). If there is no Consumer Care Centre in your country, go to your local Philips dealer.

Troubleshooting

This chapter summarises the most common problems you could encounter with the appliance. If you are unable to solve the problem with the information below, contact the Philips Consumer Care Centre in your country.

Problem	Possible cause	Solution
The appliance does not work.	There is a power failure or the socket to which the appliance is connected is not live.	Check if the power supply works. If it does, plug in another appliance to check whether the socket is live.
	The appliance overheated and switched itself off.	Unplug the appliance and let it cool down for a few minutes. Then press the on/off button to switch on the appliance again.
	The mains cord is damaged	If the mains cord is damaged, you must have it replaced by Philips, a service centre authorised by Philips or similarly qualified persons in order to avoid a hazard.
	The appliance is not suitable for the voltage to which it has been connected.	Make sure that the voltage indicated on the appliance corresponds to the local mains voltage.

产品简介

感谢您的惠顾，欢迎光临飞利浦！为了您能充分享受飞利浦提供的支持服务，请登陆以下网站注册您的产品，

www.philips.com/welcome。

飞利浦 SalonShine Care 电吹风 (HP8201 和 HP8200) /飞利浦 SalonShine Care Ion 负离子电吹风 (HP8202)/飞利浦 SalonShine Care Ion+ 负离子电吹风 (HP8203) 专为满足您的个人需要而设计，让您能以恒定的护发温度吹干秀发，从而令秀发更加健康、亮泽。此电吹风具有多种热力和风速设定，您可以根据个人喜好对头发进行造型，使自己拥有一头亮泽、丰盈、动人的秀发。该电吹风的出风口经过特别设计，可在秀发上均匀分布热量。这样便可防止热点对秀发的损伤，确保以更快的速度吹干秀发。HP8203 和 HP8202 具有负离子功能，启动电吹风后该功能会自动激活。

一般说明 (图 1)

A 梳形扩散风嘴 (仅限于 HP8203/HP8201)

B 集风嘴

C 出风口

D 负离子指示灯 (仅限于 HP8203/HP8202)

E 护发冷风喷出钮

F 气流滑动开关

- II = 强气流，适合快速吹干

- I = 柔和气流，特别适合定形

- O = 关闭

G 温度滑动开关

- ☼ = 快速吹干设置

- ⚡ = 过热保护设置

- ● = 冷风喷出设置

H 空气入口

I 可折叠式手柄

J 挂环

注意事项

使用产品之前，请仔细阅读本使用说明书，并妥善保管以备日后参考。

警告

- 请勿靠近水使用本产品。请勿在澡盆、喷头、水池或其它盛有水的容器附近使用本产品。(图 2)
- 如果在浴室中使用本产品，用完后请拔下电源插头。与水接近存在危险，即使已关闭产品电源。
- 请勿将任何物体插入产品中，以防触电。
- 在将产品连接电源之前，请先检查产品所标电压与当地的供电电压是否相符。
- 定期检查电源线的情况。如果插头、电源线或产品本身已损坏，请勿再使用本产品。
- 如果电源软线损坏，为了避免危险，必须由制造商、其维修部或类似部门的专业人员来更换。
- 本产品不打算由肢体不健全、感觉或精神上有障碍或缺乏相关经验和知识的人（包括儿童）使用，除非有负责他们安全的人对他们使用本产品进行监督或指导。
- 应照看好儿童，确保他们不玩耍该产品。

注意

- 有关其它保护措施，建议在浴室的电路中安装一个漏电保护器(RCD)。RCD必须具有不超过 30mA 的额定漏电动作电流。有关建议，请咨询安装人员。
- 切勿阻塞电吹风风口。
- 本产品具有安全功能。如果产品过热，它将自动关闭电源。拔下产品电源插头，让其冷却几分钟。再次打开产品电源之前，请检查进风口，确保没有绒毛、头发等杂物将其堵塞。
- 即使只将产品放下片刻，也应始终将其电源关闭。
- 使用后务必拔下产品的插头。
- 切勿将电源线缠绕在产品上。
- 仅限于 HP8203/HP8202：使用此电吹风时，您可能会闻到特殊的气味，这是所产生的负离子的气味，对人体无害。
- 请勿对假发使用本产品。
- 本产品仅可用于吹干头发。

- 请勿将本产品用于本手册中说明以外的任何其它用途。
- 保持电吹风洁净无尘，无污渍、无定型产品（如摩丝、定型喷剂和发胶）。
- 切勿使用其它制造商生产的或未经飞利浦特别推荐的附件或部件。如果您使用了此类附件或部件，则本产品的保修将会失效。

电磁场 (EMF)

这款飞利浦产品符合关于电磁场 (EMF) 的相关标准。据目前的科学证明，如果正确使用并按照本用户手册中的说明进行操作，本产品是安全的。

使用本产品

吹干

- 1** 将电源插头接入插座。
- 2** 将风速滑动开关设定为所需设置，从而打开产品电源。(图 3)
 - 将风速滑动开关设为 II 档进行快速吹干。
 - 将风速滑动开关设为 I 档以吹干短发或塑造发型。
 - ▶ 仅限于 HP8203/HP8202：负离子指示灯亮起，表示负离子功能已激活。负离子功能可消除乱发和静电，令秀发加倍亮泽。
- 3** 将温度滑动开关设为快速吹干、恒温护发或冷风护理设置。(图 4)
 - 快速吹干设置 ① 能够非常快速、安全地将湿发吹干。建议您仅短暂地使用快速吹干设置，以免头发脱水。
 - 使用恒温护发设置 ② 可在恒定的护发温度下快速柔和地吹干头发。
 - 使用冷风喷出设置 ③ 可在吹干秀发的同时呵护秀发，并锁住秀发光泽。
- 4** 吹干头发时，用电吹风小距离地来回移动。(图 5)

提示：完成干发过程后，请按冷风喷出按钮直接用冷风吹头发。这可以让秀发定型，同时增添光泽。(图 6)
- 5** 使用后将风速滑动开关设定在 O 的位置，关闭产品电源。(图 7)

16 简体中文

集风嘴

集风嘴可以将气流集中到您用于制作发型的发梳上。

1 将集风嘴装在产品上。(图 8)
将集风嘴从产品上拔出即可取下。

梳形扩散风嘴 (仅限于 HP8203/HP8201)

梳形扩散风嘴的特别设计适用于轻柔地吹干直发、卷发或波浪形头发。

1 要连接梳形扩散风嘴，将其扣合到产品上即可。(图 9)
将梳形扩散风嘴从产品上拔出即可取下。

2 要增加发根的丰盈程度，可将梳齿插入头发并触碰到头皮。(图 10)

3 握住本产品环绕头部作旋转运动，让暖风均匀地吹头发。(图 11)

清洁

不要将本产品浸入水或任何其它液体中，也不要在水龙头下冲洗。

1 关闭产品并拔下电源插头。

2 清洁产品之前，请卸下集风嘴或扩散风嘴 (仅适用于 HP8203/HP8201)。

3 必须用干布清洁产品。

4 清除进风口的毛发和灰尘。

5 用湿布清洁集风嘴或扩散风嘴 (仅适用于 HP8203/HP8201)，或将其放在水龙头下冲洗。

6 使用或存放集风嘴或扩散风嘴 (仅适用于 HP8203/HP8201) 之前，应确保其干燥。

存放

切勿将电源线缠绕在产品上。

- 1 关闭产品并拔下电源插头。
- 2 将产品放在安全的地方，让其冷却。
- 3 要存放或随身携带产品，可将手柄折叠到产品机身上。轻轻地按手柄背面，直至其折叠。(图 12)
- 4 本产品也可用吊环挂起存放。

环境

- 弃置产品时，请不要将其与一般生活垃圾堆放在一起：应将其交给官方指定的回收中心。这样做有利于环保。(图 13)

保修和服务

如果您需要服务或信息，或者有任何疑问，请访问飞利浦网站：www.philips.com。您也可与您所在地的飞利浦顾客服务中心联系（可从全球保修卡中找到其电话号码）。如果您的所在地没有飞利浦顾客服务中心，则可以当地的飞利浦经销商联系。

故障种类和处理方法

本章归纳了产品在使用时最常遇到的问题。如果您无法根据下面的信息解决问题，请与您所在国家（地区）的飞利浦客户服务中心联系。

问题	可能的原因	解决方法
产品不能工作。	电源存在故障，或产品所连接的插座没有通电。	检查供电是否正常。如果可以正常供电，请将另一台产品插入插座，检查插座是否已损坏。
	产品过热，已自行关闭电源。	拔下产品的电源插头，让其冷却数分钟。然后按开/关按钮重新启动产品。
	电源线损坏	如果电源线损坏，为避免危险，必须由飞利浦或其指定的维修部，或类似的专职人员来更换。
	可能是产品的额定电压与其连接的电源电压不符。	确保产品上标示的电压与当地的电源电压相符。

PHILIPS

产品 : 飞利浦电吹风
 型号 : HP8200
 额定电压 : 220V~
 额定频率 : 50Hz
 额定输入功率: 1600 W
 生产日期 : 请见产品底部
 产地 : 中国



珠海经济特区飞利浦家庭电器有限公司
 珠海市三灶镇琴石工业区 邮编:519040
 电话: (0756)7621898

全国顾客服务热线: 4008 800 008

本产品根据GB4706.1-2005及GB4706.15-2008,
 GB4343.1-2003及GB17625.1-2003制造

PHILIPS

产品 : 飞利浦电吹风
 型号 : HP8201
 额定电压 : 220V~
 额定频率 : 50Hz
 额定输入功率: 1600 W
 生产日期 : 请见产品底部
 产地 : 中国



珠海经济特区飞利浦家庭电器有限公司
 珠海市三灶镇琴石工业区 邮编:519040
 电话: (0756)7621898

全国顾客服务热线: 4008 800 008

本产品根据GB4706.1-2005及GB4706.15-2008,
 GB4343.1-2003及GB17625.1-2003制造

PHILIPS

产品 : 飞利浦电吹风
 型号 : HP8202
 额定电压 : 220V~
 额定频率 : 50Hz
 额定输入功率: 1600 W
 生产日期 : 请见产品底部
 产地 : 中国



珠海经济特区飞利浦家庭电器有限公司
 珠海市三灶镇琴石工业区 邮编:519040
 电话: (0756)7621898

全国顾客服务热线: 4008 800 008

本产品根据GB4706.1-2005及GB4706.15-2008,
 GB4343.1-2003及GB17625.1-2003制造

PHILIPS

产品 : 飞利浦电吹风
 型号 : HP8203
 额定电压 : 220V~
 额定频率 : 50Hz
 额定输入功率: 1600 W
 生产日期 : 请见产品底部
 产地 : 中国

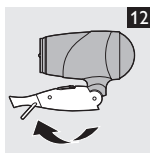
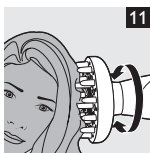
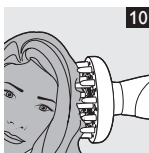
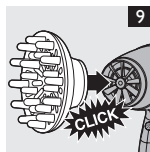
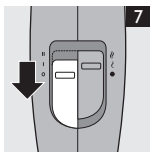
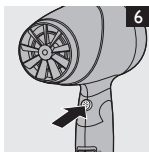
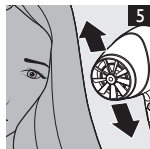
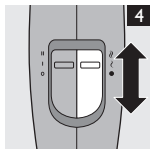
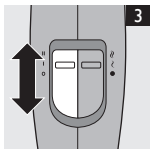


珠海经济特区飞利浦家庭电器有限公司
 珠海市三灶镇琴石工业区 邮编:519040
 电话: (0756)7621898

全国顾客服务热线: 4008 800 008

本产品根据GB4706.1-2005及GB4706.15-2008,
 GB4343.1-2003及GB17625.1-2003制造

请妥善保管本使用说明书
 发行日期: 2009/28/04





www.philips.com



4222.002.7361.1