

# **Nikon Capture 4**

***Install Guide***

# Table of Contents

Introduction: About This Manual .....	1
Overview .....	2
<b>Windows.....</b>	<b>3</b>
Installing Nikon Capture 4 Under Windows .....	4
Easy Install .....	7
Custom Install .....	16
Connecting to a Computer.....	27
Starting Nikon Transfer.....	29
Uninstall: Uninstalling Nikon Capture 4 and Nikon View 6 .....	32
Uninstalling Nikon Capture 4 .....	32
Uninstalling Nikon View 6 .....	33
Device Registration.....	34
D100/D2H/COOLPIX-Series Cameras .....	35
COOLPIX990/COOLPIX 880.....	48
D1-Series Cameras .....	68
<b>Macintosh .....</b>	<b>99</b>
Installing Nikon Capture 4 on a Macintosh.....	100
Installing Software from the Software Tab .....	102
Connecting to a Computer.....	112
Starting Nikon Transfer.....	114
Uninstall: Uninstalling Nikon Capture 4 and Nikon View 6 .....	116
Uninstalling Nikon Capture 4 .....	116
Uninstalling Nikon View 6 .....	117

---

# Introduction

## *About This Manual*

Thank you for your purchase of Nikon Capture 4. This install guide explains how to install and uninstall Nikon Capture 4 on your Windows or Macintosh computer, and how to connect your camera to your computer. It also explains how to insert a camera memory card in a card reader or PC card slot, how to start Nikon Capture 4, and how to register the camera with the system. Before reading this guide, be sure to read the *Nikon Capture 4 User's Manual*.

The procedure for installing Nikon Capture 4 varies with the model of camera and computer operating system you are using. Be sure to read the sections of this guide that apply to your model of camera and computer operating system.

### Overview

This guide is divided into two main parts, one for Windows and the other for Macintosh computers.

### Windows

This section explains how to install and uninstall Nikon Capture 4 on your Windows computer, and how to connect your camera to your computer. It also explains how to insert the memory card in a card reader or PC card slot, and how to start Nikon Capture 4 under Windows. Note that when you connect your camera to a Windows computer after installing Nikon Capture 4, the computer will automatically identify the camera as a new device and initiate device registration. For information on confirming that the camera is correctly registered with the system, see “Device Registration” in this manual, which describes how to confirm device registration with different models of camera and different versions of Windows.

### Macintosh

This section explains how to install and uninstall Nikon Capture 4 on your Macintosh computer, and how to connect your camera to your computer. It also explains how to insert the memory card in a card reader or PC card slot, and how to start Nikon Capture 4 from a Macintosh.



### Illustrations

The illustrations in this guide are from Windows XP and Mac OS X. Depending on the operating system used, the dialogs and menus displayed on your computer may differ slightly from those shown here.

# Windows

This section explains how to install and uninstall Nikon Capture 4, how to connect your camera and insert the camera memory card in a card reader or PC card slot, how to start Nikon Transfer, and how to register the camera with the system.

# Installing Nikon Capture 4 Under Windows

Before installing Nikon Capture 4, make sure that your computer meets the following system requirements.

OS		Pre-installed versions of Windows XP Home Edition, Windows XP Professional, Windows 2000 Professional, Windows Millennium Edition (Me), Windows 98 Second Edition (SE)
CPU		300 MHz Pentium or better
RAM (Nikon Capture 4)		128 MB (256 MB or more recommended)
RAM (Nikon View 6)		64 MB (128 MB with RAW images) or more recommended
Hard-disk space		200 MB required for installation, with additional free disk space of 10 MB plus an amount equal to double the capacity of camera memory card available on system disk when Nikon Capture 4 is running
Video resolution		800 × 600 pixels or more with 16-bit color (High Color). 24-bit color (True Color) recommended.
Interface	IEEE 1394*	Open Host-Controller Interface (OHCI) compliant IEEE 1394 interface board or card† required for connection to D1, D1x, and D1H
	USB‡	Built-in USB interface required for connection to D100, D2H, and COOLPIX-series cameras with USB interface. Direct connection to other COOLPIX-series cameras not supported.
Supported cameras		•All functions, including Camera Control: D1, D1x, D1H, D100**, and D2H •All functions except Camera Control: USB-equipped COOLPIX cameras
Miscellaneous		•CD-ROM drive required for installation •Internet connection required for upload to the Web; e-mail program required when sending pictures by e-mail

\* The camera may not function as expected when connected to an IEEE 1394 hub.  
† A list of boards and cards that have been tested and approved for use with the D1, D1x, and D1H is available on-line at the sites listed page 2 of the User's Guide.  
‡ The camera may not function as expected when connected to a USB hub or keyboard.  
\*\*Camera firmware version 2.00 or later.

## Windows XP Home Edition, Windows XP Professional, Windows 2000 Professional

Installing Nikon Capture 4 under a multi-user operating system requires Administrator privileges. When installing Nikon Capture 4, log in as:

Windows XP Home Edition/Professional	Computer administrator
Windows 2000 Professional	Administrator

When installing Nikon Capture 4, you can choose between Easy Install and Custom Install options.

### Easy Install

The following software will be installed in the order given below.

<b>1</b>	Driver for D1-series cameras	<b>4</b>	Nikon Capture 4
<b>2</b>	COOLPIX camera drivers (Windows 98 SE only)	<b>5</b>	Nikon View 6
<b>3</b>	QuickTime 5.0.2		

### Custom Install

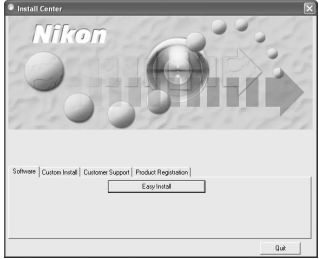
Choose from the following (software will be installed in the order listed):

<b>1</b>	COOLPIX camera drivers (Windows 98 SE only)	<b>5</b>	QuickTime 5.0.2
<b>2</b>	PTP driver (installed under Windows XP only)	<b>6</b>	Nikon Capture 4
<b>3</b>	Driver for COOLPIX 880 and 990 cameras	<b>7</b>	Nikon View 6
<b>4</b>	Driver for D1-series cameras		

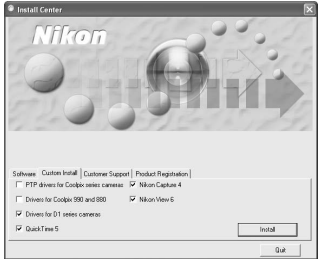
### Before installing Nikon Capture 4

- Uninstall any earlier versions of Nikon Capture or Nikon View before installing Nikon Capture 4.
- Exit all applications, including any virus-checking software that may be running.

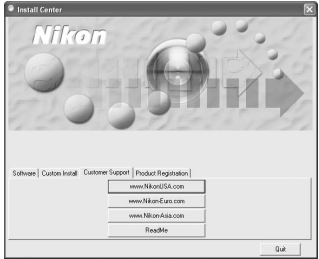
When the Nikon Capture 4 CD is inserted into a CD-ROM drive, a “Select Language” dialog will open automatically. Select a language from the list and click **Next** to display the Install Center window. The Install Center window contains five tabs: Software, Custom Install, Customer Support, and (in some areas) Product Registration. Clicking **Quit** will interrupt installation and close the Install Center window.



Clicking the **Easy Install** button in the Software tab begins installation of the driver for D1 series cameras, the COOLPIX camera drivers (Windows 98 SE only), QuickTime 5.0.2, Nikon Capture 4, and Nikon View 6.



This tab lists the software that can be installed from the Install Center window. Check the desired items and click **Install** to begin installation.



**Customer Support**

Click the button for your area to view the Nikon technical support web site (Internet connection required).

**ReadMe**

Click **ReadMe** to view the ReadMe file. We recommend that you view the ReadMe file before installing Nikon Capture 4.

### If the “Select Language” Dialog Is Not Displayed

If the “Select Language” dialog is not displayed when the Nikon Capture 4 CD is inserted:

1. Under Windows XP Home Edition and Windows XP Professional, select **My Computer** from the **Start** menu. In other versions of Windows, double click the My Computer icon on the desktop.
2. Click the icon for the CD-ROM drive containing the Nikon Capture 4 CD with the right mouse button.
3. Choose **AutoPlay** from the menu that appears.





\* Not available in some areas.

## Easy Install

The standard installation procedure involves two steps: choosing the Easy Install option and installing the software.

### Step 1: Choose the Easy Install option

In the Software tab, click **Easy Install** to begin installation of the driver for D1-series cameras, the Coolpix camera drivers (Windows 98 SE only), QuickTime 5.0.2, Nikon Capture 4, and Nikon View 6.



### ✓ Before installation

Before installing Nikon Capture 4 and the device driver, make sure the camera is not connected to the computer. If the Device Wizard is displayed, click **Cancel** to exit the Wizard.

### ✎ Product Key

When you start Nikon Capture 4 Editor or Nikon Capture 4 Camera Control after installation, you may be prompted to enter a product key. Enter the Nikon Capture 4 product key exactly as given, including spaces.

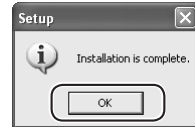
## Step 2: Complete installation

### 2.1 — Install the driver for D1-series cameras

If you are using one of the D1 series of cameras, first install the driver for your camera. If you are using a different model of camera, click **Cancel** and go to the next step. To install the driver for D1 series cameras, click **OK**.



The system will display a message stating that installation is complete. Click **OK**.



### 2.2 — Install Quick Time 5.0.2

Installation of QuickTime 5.0.2 opens with the dialog shown below. Leave the registration information blank and click **Next**. Follow the on-screen instructions to complete installation and proceed to the next step.



## Windows 98 SE

If you are using Windows 98 SE, the Coolpix Camera Drivers (all models except 990 and 880) will be installed before the driver for D1 series cameras. The dialog box shown right will be displayed. Click **OK** to continue.



### 2.3—Install Nikon Capture 4

Once installation of QuickTime 5.0.2 is complete, installation of Nikon Capture 4 will begin.

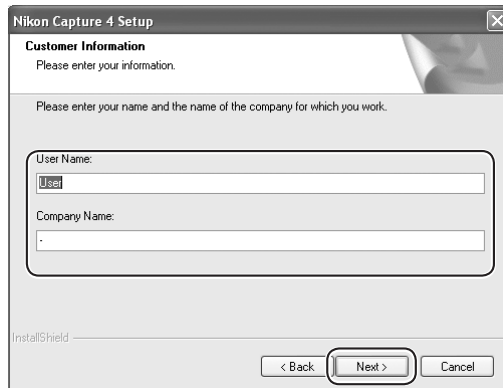
#### 2.3.1—Accept the license agreement

Installation of Nikon Capture 4 begins with the license agreement. After making sure that you have read and understood the contents of the agreement, click **Yes** to continue installation.



#### 2.3.2—Personalize your copy of Nikon Capture 4

Enter your name and company (if applicable) to activate the **Next** button. Clicking **Next** will display a confirmation dialog; if the information you entered is correct, click **Yes** to proceed to the next step.

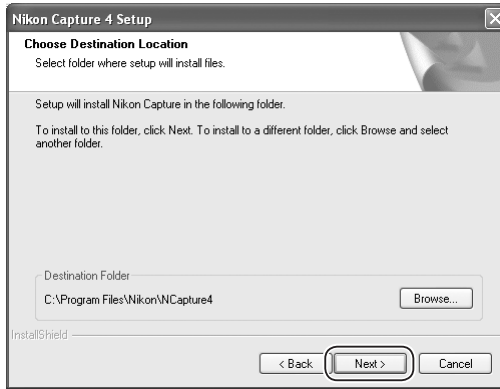


#### Earlier Versions of Nikon Capture and Nikon View

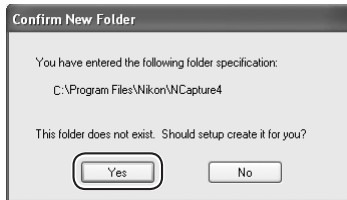
Before you can install Nikon Capture 4, you must uninstall any earlier versions of Nikon Capture or Nikon View.

### 2.3.3—Choose a location

The folder to which Nikon Capture 4 will be installed is shown in the **Destination Folder** area (the default location is ...Program Files\Nikon\NCapture4). To install to this folder, click **Next**. To select a new folder, click the **Browse...** button and navigate to the desired location.

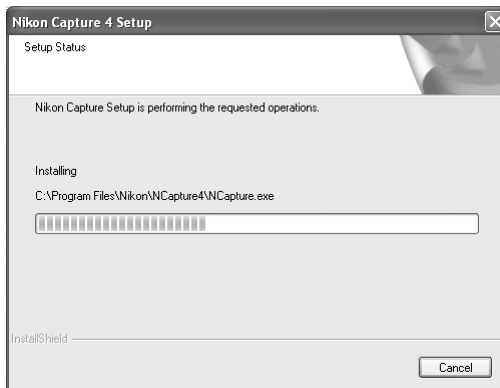


If the chosen folder does not already exist, clicking **Next** will display the following dialog. Click **Yes** to create a folder in the location shown.



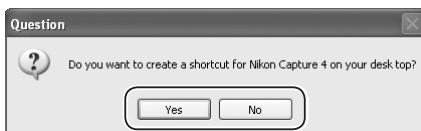
### 2.3.4—Start installation

While installation is in progress, the dialog shown below will be displayed.



### 2.3.5—Create a shortcut on the desktop

When the progress indicator reaches 100%, the dialog shown below will appear. Click **Yes** to create a shortcut, allowing you to start Nikon Capture 4 directly from an icon on the desktop. If you do not want to create a shortcut, click **No**.



### Associating File Extensions with Nikon Capture 4

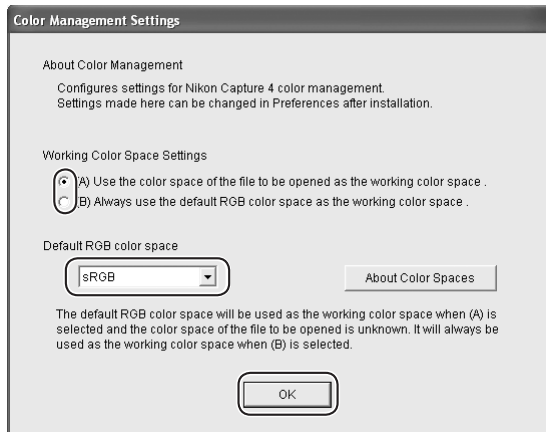
If Nikon Scan or other software that uses the same file extensions as Nikon Capture is installed, a dialog will be displayed asking whether you would like to associate Nikon Capture 4 with the extensions for color balance settings (\*.nca), tone curves (\*.ncv), and other image adjustment settings files. To associate Nikon Capture 4 with these extensions (recommended), click **Yes**.

### Choosing an Application for Opening Image Files

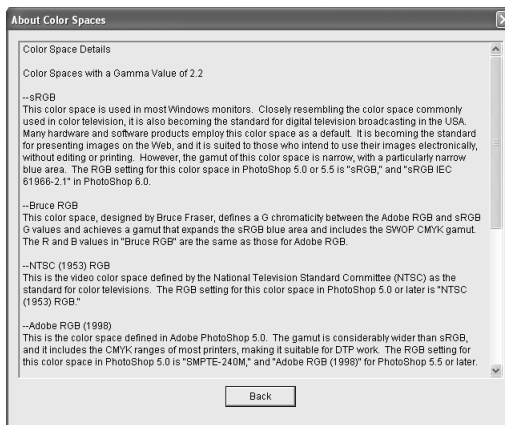
If Adobe Photoshop is installed on your system, the dialog for choosing an application for opening image files will be displayed. Click **Yes** to select Photoshop as the application that will be used to open image files.

### 2.3.6—Choose default color management settings

To use the color-space profile embedded in images opened in Nikon Capture 4, choose **(A) Use the color space of the file to be opened as the working color space**. To choose a default RGB color-space profile for the working color space in Nikon Capture 4, choose **(B) Always use the default RGB color space as the working color space**. When this option is selected, you can choose the default color-space profile from a pull-down menu. Click **OK** to put changes into effect and proceed to the next step.



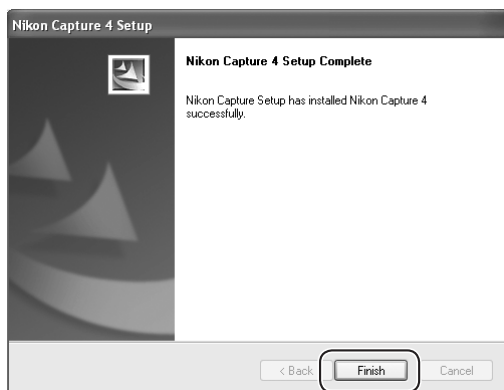
Clicking **About Color Spaces** displays a description of the different color-space profiles. Use this explanation to help you choose a color-space profile.



The default output color-space profile can be changed at any time after installation in the Color Management tab of the Nikon Capture 4 Editor or Nikon Capture 4 Camera Control Preferences dialog.

### 2.3.7—Complete installation of Nikon Capture 4

The following dialog is displayed when installation of Nikon Capture 4 is complete. Click **Finish** to proceed to the next step.

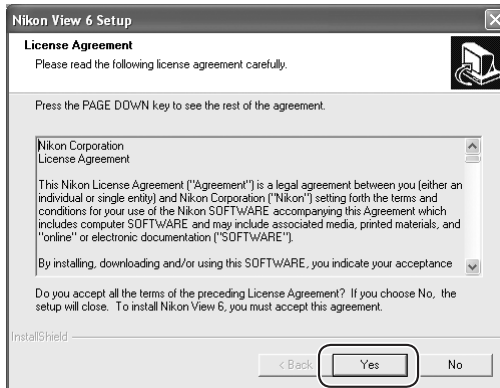


## 2.4—Install Nikon View 6

Installation of Nikon View 6 begins with the license agreement shown in Step 2.4.1.

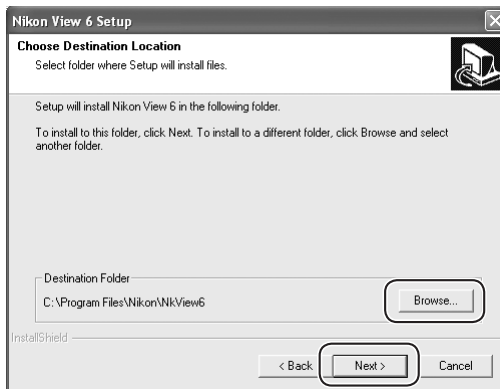
### 2.4.1—Accept the license agreement

After making sure that you have read and understood the contents of the agreement, click **Yes** to continue installation.

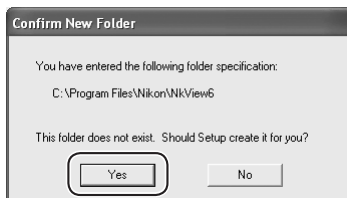


### 2.4.2—Choose a location

The folder to which Nikon View 6 will be installed is shown in the **Destination Folder** area (the default location is ...Program Files\Nikon\NKView6). To install to this folder, click **Next**. To select a new folder, click the **Browse...** button and navigate to the desired location.



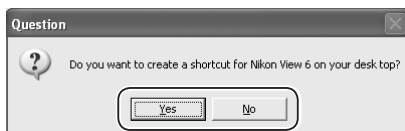
If the chosen folder does not already exist, clicking **Next** will display the following dialog. Click **Yes** to create a folder in the location shown.





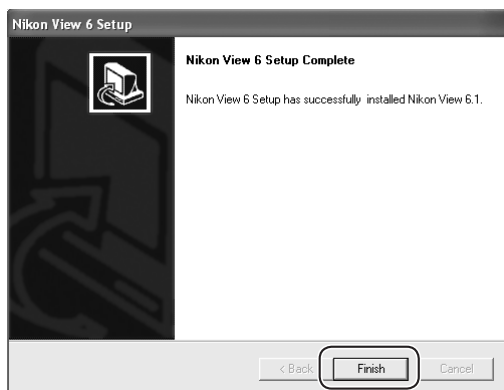
### 2.4.3—Create a shortcut on the desktop

When the Nikon View application files have been installed, the dialog shown below will appear. Click **Yes** to create a shortcut, allowing you to start Nikon View 6 directly from an icon on the desktop. If you do not want to create a shortcut, click **No**.



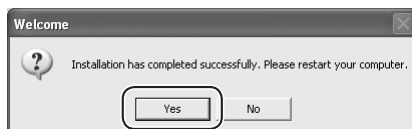
### 2.4.4—Complete installation of Nikon View 6

The following dialog is displayed when installation of Nikon View 6 is complete. Click **Finish** to proceed to the next step.



### 2.5—Restart your computer

The dialog shown below will appear when installation is complete. Click **Yes** to restart your computer. This completes the Easy Install procedure.



### Earlier Versions of Nikon Capture and Nikon View

Before you can install Nikon View 6, you must uninstall any earlier versions of Nikon Capture or Nikon View. Note that Nikon View 6 does not support connection of COOLPIX 950, 910, 900, 800, or 700 digital cameras. It can however be used to view photographs taken with these cameras if the camera memory card is inserted in a card reader or PC card slot.

## Custom Install

The standard installation procedure involves two steps: choosing the Custom Install option and installing the software.

### Step 1: Choose the Custom Install option

Click the Custom Install tab and check the software you want to install.



#### *Coolpix Camera Drivers (all models except 990 and 880)*

This check box is only displayed under Windows 98 Second Edition (SE). Check this box to install the Mass Storage driver for Windows 98 SE.

#### *PTP Driver*

Check this box to install the driver needed for a PTP (Picture Transfer Protocol) USB connection. This check box is only displayed if you are using Windows XP Home Edition or Windows XP Professional.

#### *Driver for Coolpix 990 and 880*

Check this box to install the drivers for the COOLPIX 990 and 880.

#### *Driver for D1 series cameras*

Check this box to install the drivers for the D1 series.

#### *QuickTime 5.0.2*

Check this box to install QuickTime 5.0.2 from Apple Computer.

#### *Nikon Capture 4*

Check this box to install Nikon Capture 4.

#### *Nikon View 6*

Check this box to install Nikon View 6.

## Step 2: Complete installation

To begin installation of the selected software, click the **Install** button in the Custom Install tab. If more than one option is selected, the software will be installed in the order listed.



### Before installation

Before installing Nikon Capture 4 and the device drivers, make sure the camera is not connected to the computer. If the Device Wizard is displayed, click **Cancel** to exit the Wizard.

## 2.1 — Install drivers

If you selected **PTP driver, Driver for COOLPIX 990/880**, or **Driver for D1-series cameras**, installation will begin with the selected drivers. The explanation that follows takes the driver for D1-series camera as an example.

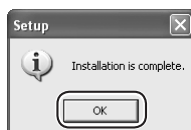
### 2.1.1 — Begin driver installation

If you selected **Driver for D1-series cameras**, the following dialog will be displayed. Click **OK** to begin installation.



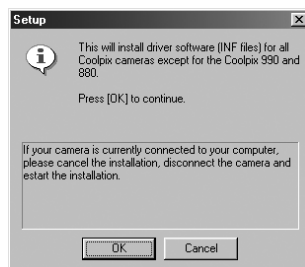
### 2.1.2 — End driver installation

When installation is complete, the following dialog will be displayed. Click **OK** to proceed to the next step.



## Windows 98 SE

If you are using Windows 98 SE and selected Coolpix Camera Drivers (all models except 990 and 880) in the Custom Install tab, the Coolpix Camera Drivers (all models except 990 and 880) will be installed. Installation of the driver begins with the dialog shown at right. Click **OK** to continue.



## PTP Driver

The PTP driver supports transfer of pictures using the camera transfer button under Picture Transfer Protocol (PTP). It is installed only under Windows XP Home Edition or Windows XP Professional. If the dialog shown below is displayed, click **OK** to install the PTP driver.



Once the PTP driver has been installed, the Windows XP Updater shown below may be displayed depending on your operating environment.



If the Updater is displayed, complete the update by following the on-screen instructions. Do not restart your computer when the update is complete; instead, continue with installation. If the Updater dialog is not displayed, complete installation normally.

## 2.2— Install Quick Time 5.0.2

If you opted to install QuickTime 5.0.2, installation will open with the dialog shown below. Leave the registration information blank and click **Next**. Follow the on-screen instructions to complete installation and proceed to the next step.

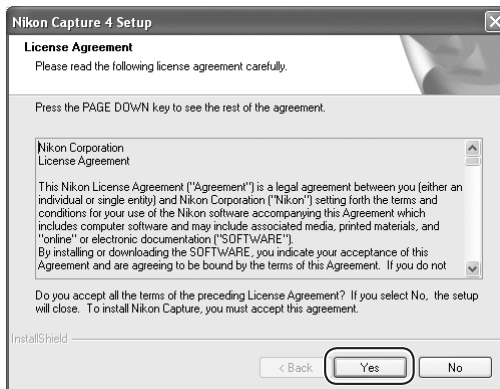


## 2.3— Install Nikon Capture 4

Installation of Nikon Capture 4 begins with the license agreement.

### 2.3.1—Accept the license agreement

After making sure that you have read and understood the contents of the agreement, click **Yes** to continue installation.

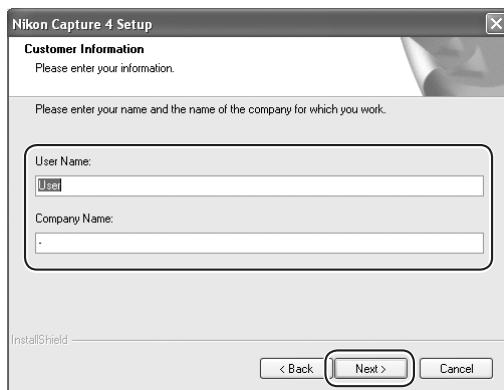


## Earlier Versions of Nikon Capture and Nikon View

Before you can install Nikon Capture 4, you must uninstall any earlier versions of Nikon Capture or Nikon View.

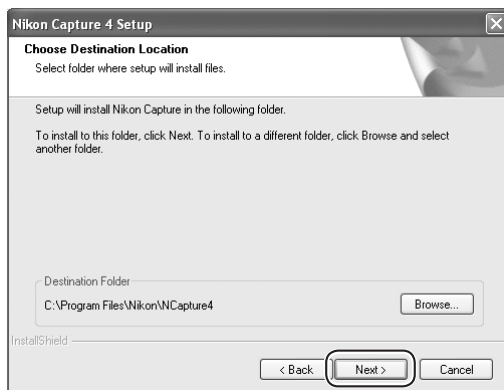
### 2.3.2—Personalize your copy of Nikon Capture 4

Enter your name and company (if applicable) to activate the **Next** button. Clicking **Next** will display a confirmation dialog; if the information you entered is correct, click **Yes** to proceed to the next step.

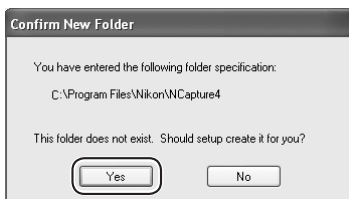


### 2.3.3—Choose a location

The folder to which Nikon Capture 4 will be installed is shown in the **Destination Folder** area (the default location is ...Program Files\Nikon\NCapture4). To install to this folder, click **Next**. To select a new folder, click the **Browse...** button and navigate to the desired location.

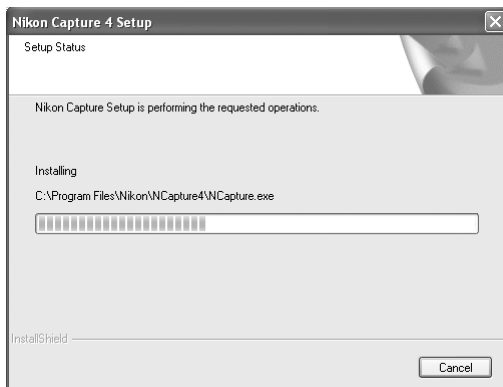


If the chosen folder does not already exist, clicking **Next** will display the following dialog. Click **Yes** to create a folder in the location shown.



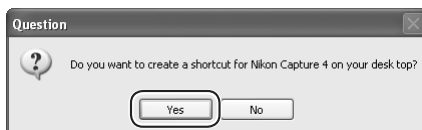
### 2.3.4—Start installation

While installation is in progress, the dialog shown below will be displayed.



### 2.3.5—Create a shortcut on the desktop

When the progress indicator reaches 100%, the dialog shown below will appear. Click **Yes** to create a shortcut, allowing you to start Nikon Capture 4 directly from an icon on the desktop. If you do not want to create a shortcut, click **No**.



## Associating File Extensions with Nikon Capture 4

If Nikon Scan or other software that uses the same file extensions as Nikon Capture is installed, a dialog will be displayed asking whether you would like to associate Nikon Capture 4 with the extensions for color balance settings (\*.nca), tone curves (\*.ncv), and other image adjustment settings files. To associate Nikon Capture 4 with these extensions (recommended), click **Yes**.

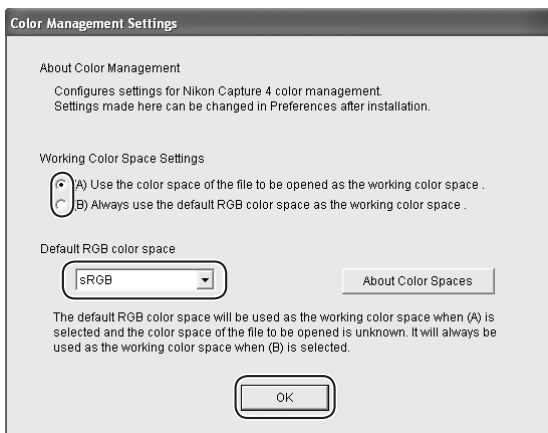
## Choosing an Application for Opening Image Files

If Adobe Photoshop is installed on your system, a dialog will be displayed asking if you want to use Photoshop to open image files saved in Nikon Capture 4. Click **Yes** to select Photoshop as the application that will be used to open image files.

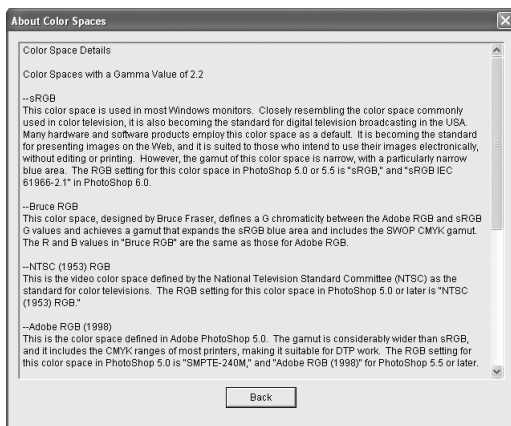


### 2.3.6—Choose default color management settings

To use the color-space profile embedded in images opened in Nikon Capture 4, choose **(A) Use the color space of the file to be opened as the working color space**. To choose a default RGB color-space profile for the working color space in Nikon Capture 4, choose **(B) Always use the default RGB color space as the working color space**. When this option is selected, you can choose the default color-space profile from a pull-down menu. Click **OK** to put changes into effect and proceed to the next step.



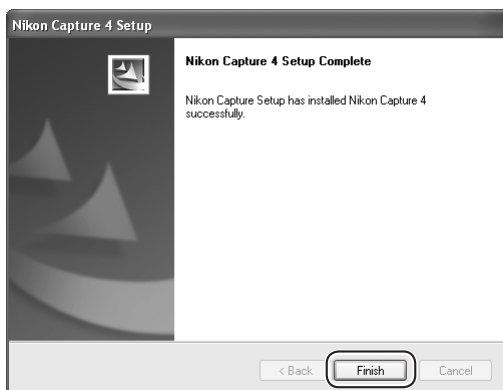
Clicking **About Color Spaces** displays a description of the different color-space profiles. Use this explanation to help you choose a color-space profile.



The default output color-space profile can be changed at any time after installation in the Color Management tab of the Nikon Capture 4 Editor or Nikon Capture 4 Camera Control Preferences dialog.

### 2.3.7—Complete installation of Nikon Capture 4

The following dialog is displayed when installation of Nikon Capture 4 is complete. Click **Finish** to proceed to the next step.

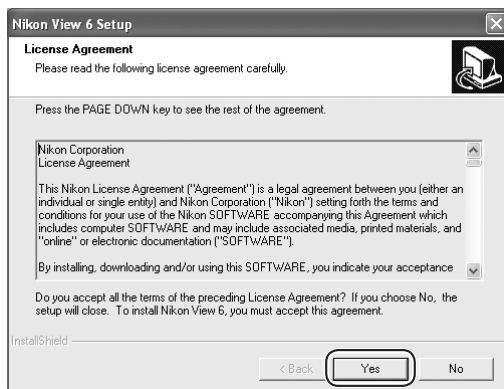


## 2.4—Install Nikon View 6

Installation of Nikon View 6 begins with the license agreement shown in Step 2.4.1.

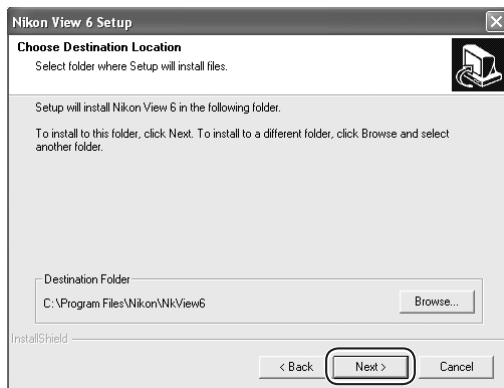
### 2.4.1—Accept the license agreement

After making sure that you have read and understood the contents of the agreement, click **Yes** to continue installation.

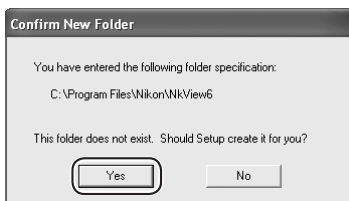


### 2.4.2—Choose a location

The folder to which Nikon View 6 will be installed is shown in the **Destination Folder** area (the default location is ...Program Files\Nikon\NKView6). To install to this folder, click **Next**. To select a new folder, click the **Browse...** button and navigate to the desired location.

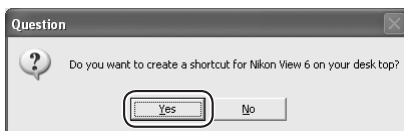


If the chosen folder does not already exist, clicking **Next** will display the following dialog. Click **Yes** to create a folder in the location shown.



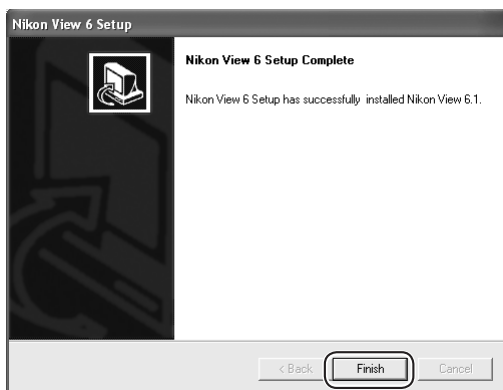
### 2.4.3—Create a shortcut on the desktop

When the Nikon View application files have been installed, the dialog shown below will appear. Click **Yes** to create a shortcut, allowing you to start Nikon View 6 directly from an icon on the desktop. If you do not want to create a shortcut, click **No**.



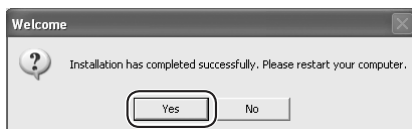
### 2.4.4—Complete installation of Nikon View 6

The following dialog is displayed when installation of Nikon View 6 is complete. Click **Finish** to proceed to the next step.



### 2.5 — Complete installation

The dialog shown below will appear when installation is complete. Click **Yes** to restart your computer.



### Earlier Versions of Nikon Capture and Nikon View

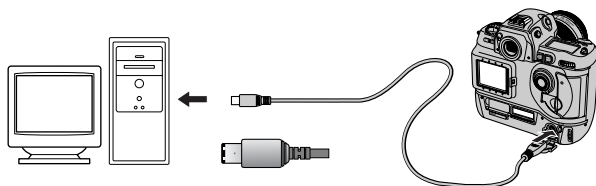
Before you can install Nikon View 6, you must uninstall any earlier versions of Nikon Capture or Nikon View. Note that Nikon View 6 does not support connection of COOLPIX 950, 910, 900, 800, or 700 digital cameras. It can however be used to view photographs taken with these cameras if the camera memory card is inserted in a card reader or PC card slot.

## Connecting to a Computer

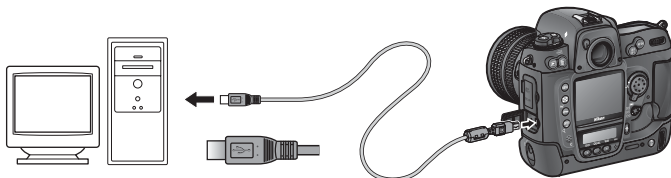
If you are using a computer running Windows, make sure that you install Nikon Capture 4 before connecting your camera to the computer for the first time. After installing Nikon Capture 4, turn the camera on and connect it to the computer, or insert the memory card into a card reader or a PC card slot.

For more information about connecting your camera to a computer, see the documentation provided with your camera.

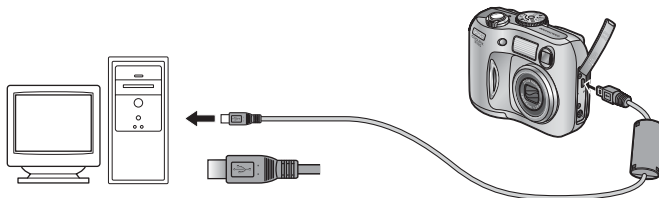
### *D1/D1x/D1H (IEEE 1394/Firewire Interface)*



### *D100/D2H (USB Interface)*



### *COOLPIX Series (USB Interface)*



#### **✓ Use a Reliable Power Source**

To ensure that data transfer is not interrupted, be sure that the battery is fully charged. If in doubt, charge the battery before use or use an AC adapter (available separately). If the battery is exhausted during transfer, transfer will be interrupted and data may be lost.

## Using a PC Card Slot

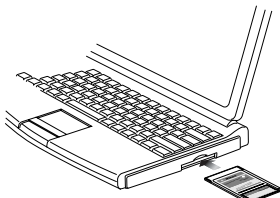
When inserted in a PC-card adapter (available separately), the camera memory card functions as a Type II PCMCIA ATA card, allowing images to be read from the card.

### *Inserting a Memory Card*

Remove the memory card from the camera and insert it in the adapter.



Insert the adapter into a PCMCIA TYPE II ATA card slot on your computer. For more information on inserting the adapter, see the documentation provided with your computer.



Depending on your computer's operating environment, you may need to install software, register the card adapter, or adjust OS settings when the adapter is inserted into the card slot. For more information, refer to the instruction manual for your operating system.

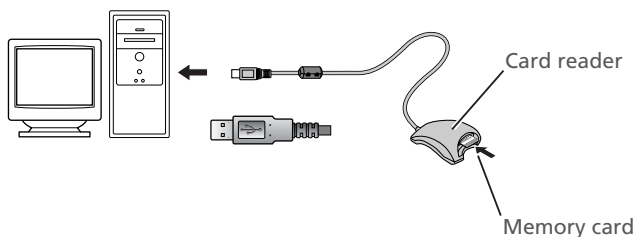
## Using a Card Reader

Images on the memory card can also be viewed using a card reader.

### *Inserting a Memory Card*

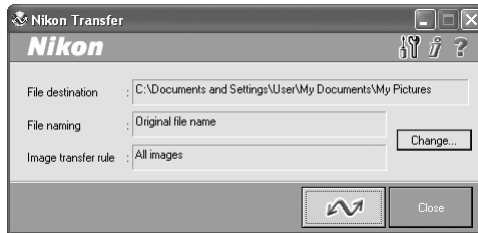
After removing the memory card from the camera, insert it in the card reader and connect the reader to the computer. See the documentation provided with the card reader for more information on connecting it to a computer.

#### *Card reader (USB interface)*



## Starting Nikon Transfer

Once installation is complete, Nikon Transfer will start automatically whenever your Nikon digital camera is connected to your computer and turned on, or when the camera memory card is inserted in a PC card slot or in a card reader connected to the computer. Note that only one camera can be connected to the computer at a time.



For information on using other components of Nikon Capture 4, see the *Nikon Capture 4 User's Manual*.

### If Nikon Transfer Does Not Start

If Nikon Transfer does not start, refer to Device Registration to confirm that the camera is registered as a device with your computer.

### Auto Start

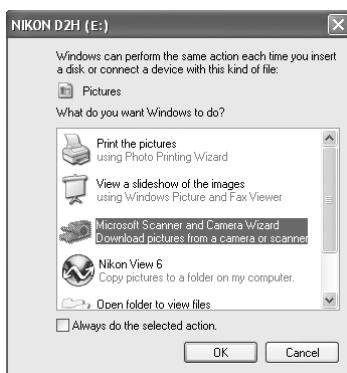
Nikon Transfer will start automatically when:

- A supported camera is connected while on and with a memory card in place
- A supported camera with a memory card in place is connected and then turned on
- A memory card from a supported camera (COOLPIX 600 excluded) is inserted in a card reader or PC card slot

## Starting Nikon Transfer under Windows XP

The procedure for starting Nikon Transfer under Windows XP Home Edition/Professional differs from that for other operating systems. Under Windows XP, the Removable Disk dialog is displayed when you connect the camera to the computer or insert the memory card into a card reader or PC card slot. Select **Copy pictures to a folder on my computer using Nikon View 6** in this dialog to start Nikon Transfer.

Note that the Removable Disk dialog is not displayed when a D1, D1X, D1H, or COOLPIX990/880 camera is connected; instead, Nikon Transfer starts automatically. Note also that the Removable Disk dialog is not displayed if the memory card contains only movies.

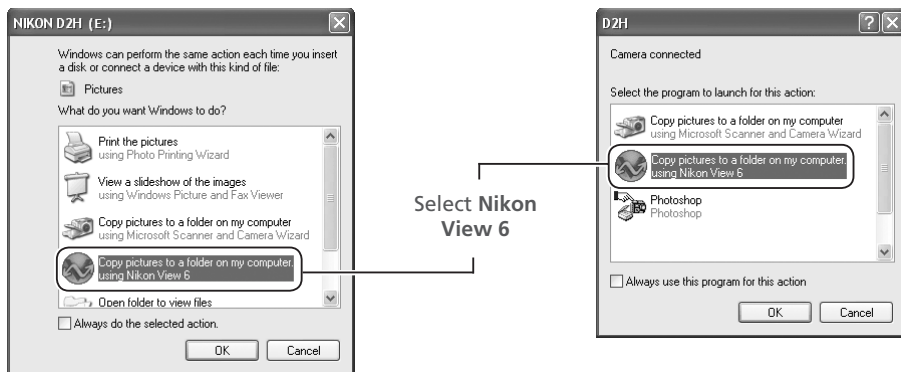


Removable Disk dialog

## Starting Nikon Transfer from the Removable Disk Dialog

To start Nikon Transfer under Windows XP, follow the steps below.

1. Connect the camera to your computer using an interface cable or insert the memory card in a card reader or PC card slot.
2. Turn the camera on. The Removable Disk dialog will be displayed.
3. Select **Copy pictures to a folder on my computer using Nikon View 6**.



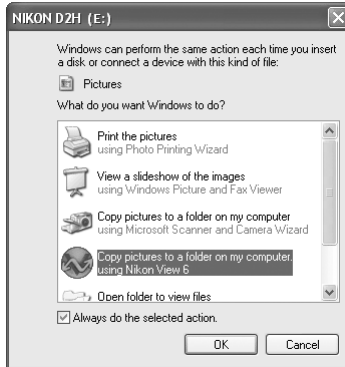
4. Click **OK**. Nikon Transfer will start.



*“Always do the selected action”*

If **Always do the selected action** is checked when **Copy pictures to a folder on my computer (using Nikon View 6)** is selected in the Removable Disk dialog, the Removable Disk dialog will not be displayed the next time you connect a camera to the computer or insert a memory card in a card reader or PC card slot. Instead, Nikon Transfer will start automatically.

If **Always do the selected action** is not checked, the Removable Disk dialog will be displayed.



Even if you check **Always do the selected action**, Removable Disk dialog will appear when:

- you use a different camera from the one you were using when you checked **Always do the selected action**
- you use a different USB port from the one you were using when you checked **Always do the selected action**

### The Removable Disk Dialog

The Removable Disk dialog will not be displayed when:

- A D1, D1x, D1H, COOLPIX 990, or COOLPIX 880 is connected. Nikon Transfer will start automatically.
- You connect a camera using PTP. The **Select the program to launch for this action** dialog will be displayed instead.
- A memory card containing only hidden pictures or no pictures at all is inserted in a camera connected using Mass Storage.

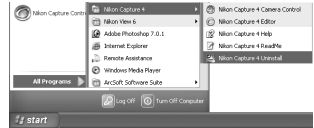
# Uninstall

## Uninstalling Nikon Capture 4 and Nikon View 6

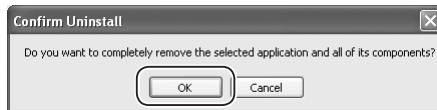
This section describes how to uninstall the Windows versions of Nikon Capture 4 and Nikon View 6.

### Uninstalling Nikon Capture 4

1 From the **Start** menu, select **All Programs>Nikon Capture 4>Nikon Capture 4 Uninstall** (Windows XP) or **Programs>Nikon Capture 4>Nikon Capture 4 Uninstall** (other versions of Windows). The uninstall program will start.

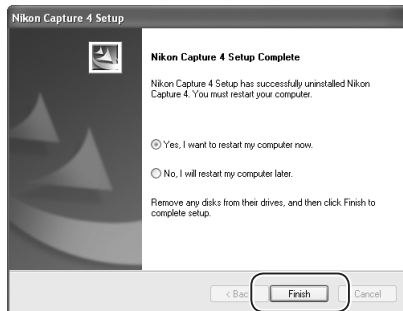


2 The uninstall program will display the message, "Do you want to completely remove the selected application and all of its components?" Click **OK** to uninstall Nikon Capture 4.



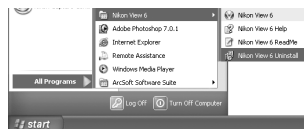
3 If any of the components used by Nikon Capture 4 are read-only or are used by other programs, a confirmation dialog will be displayed. Follow the instructions in the dialog to remove components or leave them untouched.

4 The dialog shown below will be displayed when the uninstall program has finished removing Nikon Capture 4 from your system. Confirm that **Yes, I want to restart my computer now** is selected and click **Finish** to restart your computer.

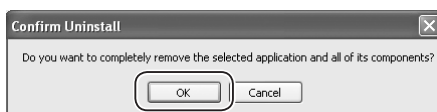


## Uninstalling Nikon View 6

1 From the **Start** menu, select **All Programs>Nikon View 6>Nikon View 6 Uninstall** (Windows XP) or **Programs>Nikon View 6>Nikon View 6 Uninstall** (other versions of Windows). The uninstall program will start.

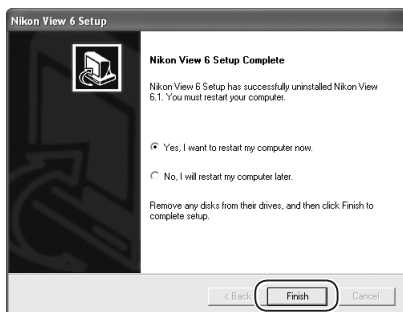


2 The uninstall program will display the message, "Do you want to completely remove the selected application and all of its components?" Click **OK** to uninstall Nikon View 6.



3 If any of the components used by Nikon View 6 are read-only or are used by other programs, a confirmation dialog will be displayed. Follow the instructions in the dialog to remove components or leave them untouched.

4 The dialog shown below will be displayed when the uninstall program has finished removing Nikon View 6 from your system. Confirm that **Yes, I want to restart my computer now** is selected and click **Finish** to restart your computer.




### Windows XP Home Edition, Windows XP Professional, Windows 2000 Professional

Uninstalling Nikon Capture 4 and Nikon View 6 under a multi-user operating system requires Administrator privileges. When uninstalling Nikon Capture 4 or Nikon View 6, log in as:

Windows XP Home Edition/Professional	Computer administrator
Windows 2000 Professional	Administrator

# Device Registration

If you connect a supported digital camera to a Windows computer after installing Nikon Capture 4 and restarting the computer, Windows will automatically identify the camera as a new device and register the camera with the system. This section explains how to confirm that the camera is correctly registered. Read the section for your camera and operating system.

Camera	Operating system	
USB cameras (D100/ D2H /COOLPIX series)	Windows XP Home Edition /Professional	35
	Windows 2000 Professional	37
	Windows Millennium Edition (Me)	39
	Windows 98 Second Edition (SE)	41
COOLPIX990 COOLPIX880	Windows XP Home Edition /Professional	48
	Windows 2000 Professional	53
	Windows Millennium Edition (Me)	58
	Windows 98 Second Edition (SE)	62
Nikon D1 Nikon D1x Nikon D1H	Windows XP Home Edition /Professional	68
	Windows 2000 Professional	72
	Windows Millennium Edition (Me)	83
	Windows 98 Second Edition (SE)	90
Nikon D1 previously registered under Nikon View DX or Nikon Capture 2 or earlier	Windows 2000 Professional	78
	Windows Millennium Edition (Me)	87
	Windows 98 Second Edition (SE)	95

## D100/D2H/COOLPIX-Series Cameras

### Windows XP Home Edition/Professional

The following explanation uses D100 as an example.

After installing Nikon Capture 4 and restarting the computer, connect your camera to the computer using a USB cable and turn the camera on. The camera will be registered automatically.



If the Removable Disk dialog is displayed after registration, click **Cancel** to close the dialog box.

Follow the instructions below to check that the camera has been correctly registered with the system.

#### Step 1

Select **Control Panel** from the **Start** menu. In the Control Panel window, click the **Performance and Maintenance** icon to open the Performance and Maintenance window. Click the **System** icon in the Performance and Maintenance window to open the System Properties window. Select the **Hardware** tab and click the **Device Manager** button.

#### Step 2

The Device Manager will be displayed. After confirming that **Disk drives**, **Storage volumes**, and **Universal Serial Bus controllers** are listed in the Device Manager, click the plus sign (+) next to each of these device types.



#### Logging On

You will need to log on as Computer Administrator to register the camera.

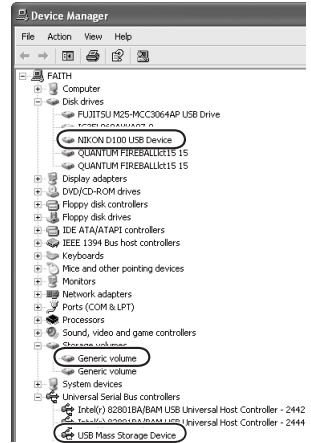
#### Before Connecting the Camera

Be sure to install Nikon Capture 4 before connecting your camera to the computer.

### Step 3

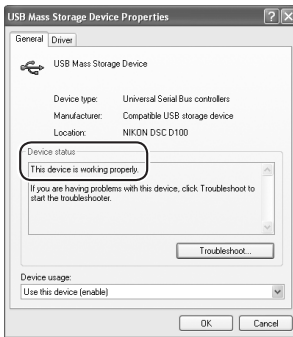
Confirm that **NIKON D100 USB Device, Generic Volume, and USB Mass Storage Device** are listed respectively under **Disk drives, Storage volumes, and Universal Serial Bus controllers**. Double-click each of these listings to open the associated **Properties** window.

If the **NIKON D100 USB Device** is listed under **Other devices**, delete this entry and then turn the camera off and then on again.



### Step 4

The Properties dialogs for the selected devices will be displayed. Click the **General** tab and confirm that **This device is working properly** appears under **Device status**. Click **OK**.



Device registration is now complete. Click **OK** to close the System Properties dialog.



**PTP**

If the **USB** option in the camera setup menu is set to **PTP**, confirm that the camera is listed under "Imaging devices."



## Windows 2000 Professional

The following explanation uses D100 as an example.

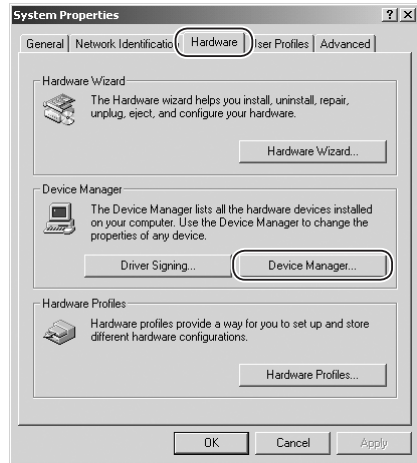
After installing Nikon Capture 4 and restarting the computer, connect your camera to the computer using a USB cable and turn the camera on. The camera will be registered automatically.



Follow the instructions below to check that the camera has been correctly registered with the system.

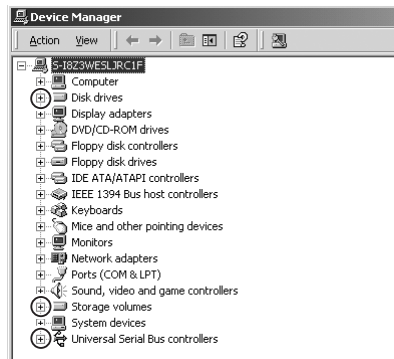
### Step 1

Right-click the **My Computer** icon on the desktop. Open the System Properties dialog by selecting **Properties** from the menu that appears. Open the Hardware tab and click the **Device Manager...** button in the Device Manager area.



### Step 2

The Device Manager will be displayed. After confirming that **Disk drives**, **Storage volumes**, and **Universal Serial Bus controllers** are listed in the Device Manager, click the plus sign (+) next to each of these device types.



### Logging On

Log on as Administrator to register the camera.



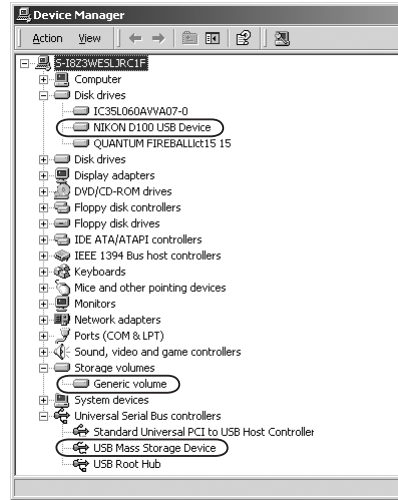
### Before Connecting the Camera

Be sure to install Nikon Capture 4 before connecting your camera to the computer.

### Step 3

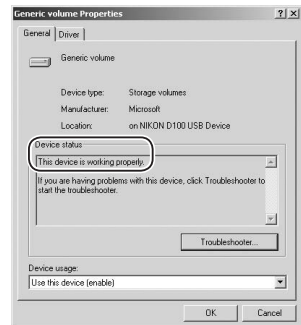
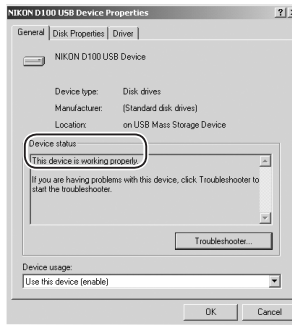
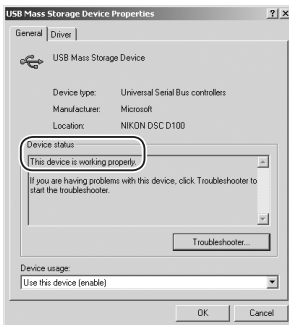
Confirm that **NIKON D100 USB Device**, **Generic volume**, and **USB Mass Storage Device** are listed respectively under **Disk drives**, **Storage volumes**, and **Universal Serial Bus controllers**. Double-click each of these listings to open the associated Properties window.

If the **NIKON D100 USB Device** is listed under **Other devices**, delete this entry and then turn the camera and off and then on again.



### Step 4

The Properties dialogs for the selected devices will be displayed. Click the **General** tab and confirm that **This device is working properly** appears under **Device status**. Click **OK**.



Device registration is now complete. Click **OK** to close the System Properties dialog.



## Windows Millennium Edition (Me)

The following explanation uses D100 as an example.

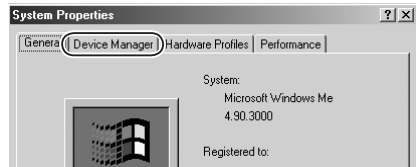
After installing Nikon Capture 4 and restarting the computer, connect your camera to the computer using a USB cable and turn the camera on. The camera will be registered automatically.



Follow the instructions below to check that the camera has been correctly registered with the system.

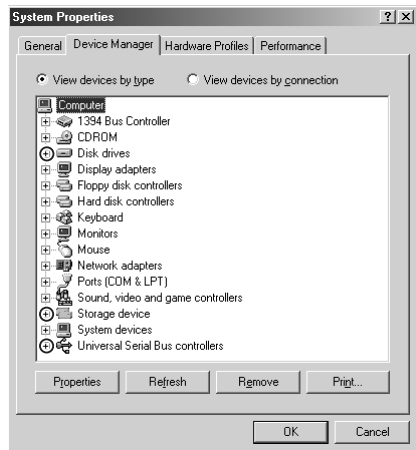
### Step 1

Right-click the **My Computer** icon on the desktop. Open the System Properties dialog by selecting **Properties** from the menu that appears. Click the Device Manager tab.



### Step 2

After confirming that **Disk drives**, **Storage device**, and **Universal Serial Bus controllers** are listed in the Device Manager tab, click the plus sign (+) next to each of these device types.

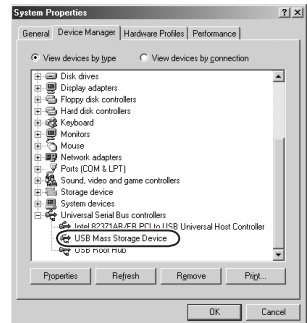
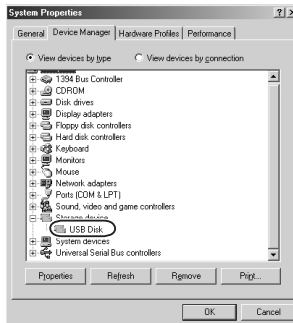
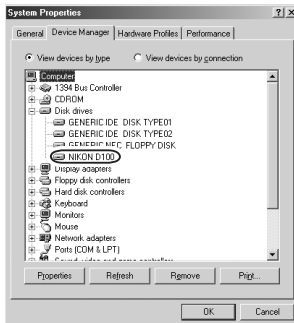


### Before Connecting the Camera

Be sure to install Nikon Capture 4 before connecting your camera to the computer.

### Step 3

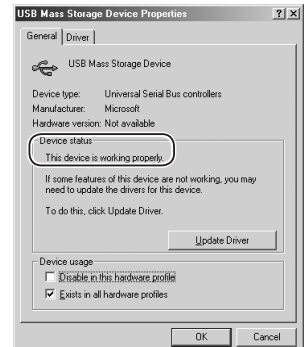
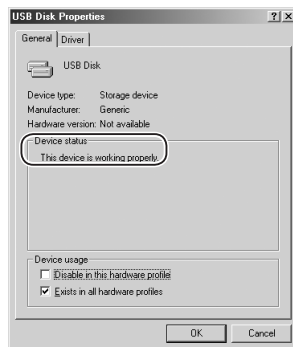
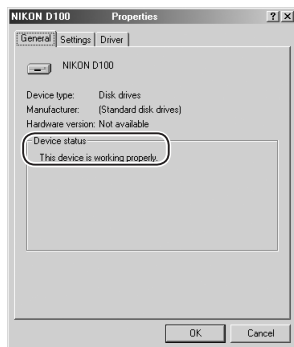
Confirm that **NIKON D100**, **USB Disk**, and **USB Mass Storage Device** are listed respectively under **Disk drives**, **Storage device**, and **Universal Serial Bus controllers**. Double-click each of these listings to display the associated Properties window.



If the **NIKON D100** is listed under **Other devices**, delete this entry and then turn the camera off and then on again.

### Step 4

The Properties dialogs for the selected devices will be displayed. Click the **General** tab and confirm that **This device is working properly** appears under **Device status**. Click **OK**.

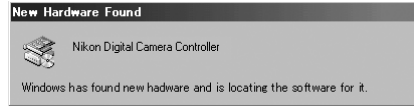


Device registration is now complete. Click **OK** to close the System Properties dialog.

## Windows 98 Second Edition (SE)

The following explanation uses D100 as an example.

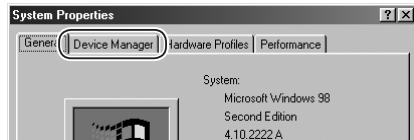
After installing Nikon Capture 4 and restarting the computer, connect your camera to the computer using a USB cable and turn the camera on. The camera will be registered automatically.



Follow the instructions below to check that the camera has been correctly registered with the system.

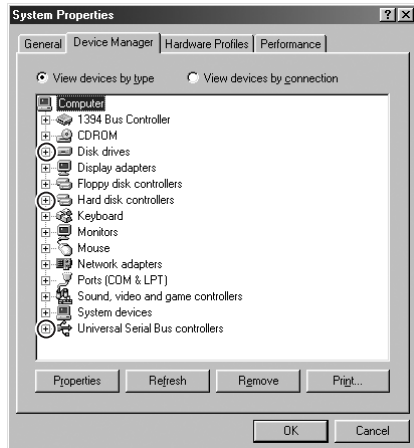
### Step 1

Right-click the **My Computer** icon on the desktop and select **Properties** from the menu that appears. The System Properties dialog will be displayed. Click the Device Manager tab.



### Step 2

After confirming that **Disk drives**, **Hard disk controllers**, and **Universal Serial Bus controllers** are listed in the Device Manager tab, click the plus sign (+) next to each of these device types.

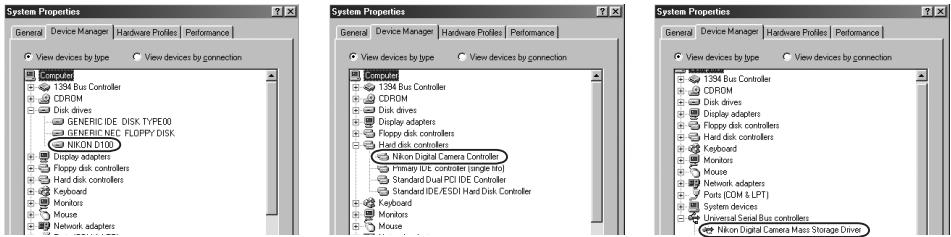


### Before Connecting the Camera

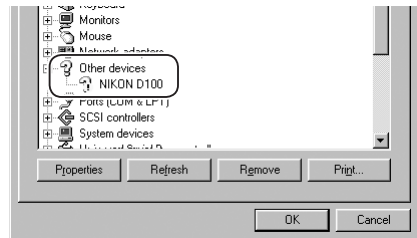
Be sure to install Nikon Capture 4 before connecting your camera to the computer.

### Step 3

Confirm that **NIKON D100**, **Nikon Digital Camera Controller**, and **Nikon Digital Camera Mass Storage Driver** are listed respectively under **Disk drives**, **Hard disk controllers**, and **Universal Serial Bus controllers**. Double-click each of these listings to open the associated Properties window.



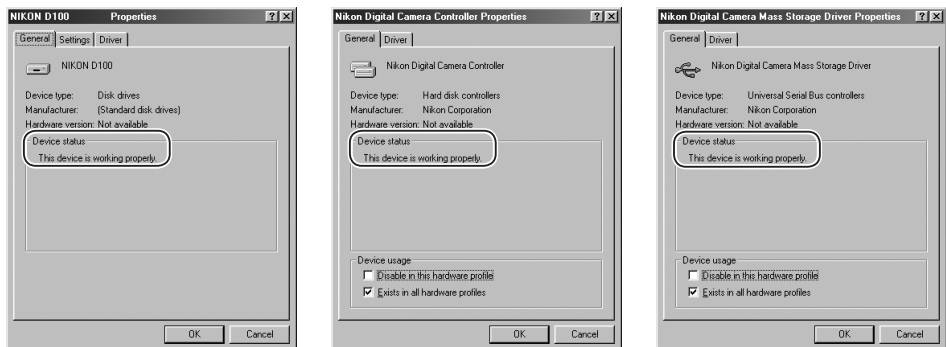
If the **NIKON D100** is listed under **Other devices**, reinstall the device driver as instructed in "Reinstalling the Device Driver" (43).



If the three drivers above are not listed in the **Device Manager** and **NIKON D100** is not listed under **Other devices**, disconnect the camera and restart the computer. When the computer has restarted, reconnect the camera to the computer.

### Step 4

The properties for the selected devices will be displayed. Click the **General** tab and confirm that **This device is working properly** appears under **Device status**. Click **OK**.



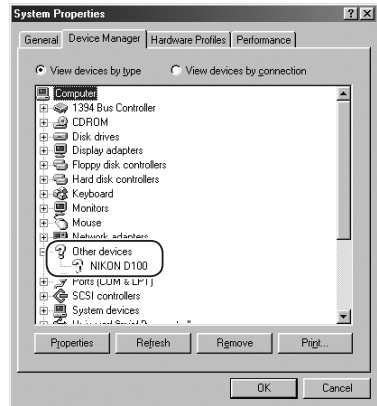
Device registration is now complete. Click **OK** to close the System Properties dialog.

**Reinstalling the Device Driver—Windows 98 Second Edition (SE)**

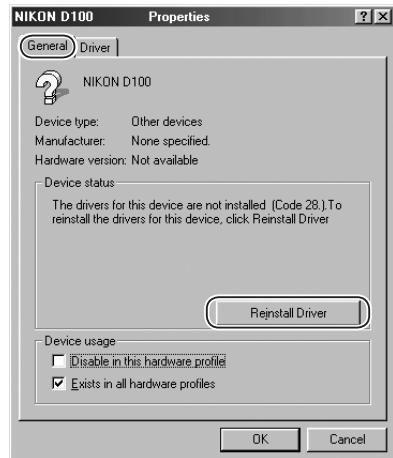
If **NIKON D100** is listed under **Other devices**, you will need to reinstall the device driver.

**Step 1**

Double-click the **NIKON D100** listing under **Other devices**.

**Step 2**

The NIKON D100 Properties dialog will be displayed. Open the General tab and click **Reinstall Driver**.

**Step 3**

The Update Device Driver Wizard will be displayed; click **Next**.



### Step 4

The dialog box shown at right will be displayed. Select **Search for a better driver than the one your device is using now** and click **Next**.



### Step 5

Insert the Nikon Capture 4 CD into a CD-ROM drive. To prevent the Install Center dialog from opening automatically, hold down the shift key while inserting the CD. Check the **CD-ROM drive** option and click **Next**.

#### *The Install Center Dialog*

If the Install Center dialog appears when the CD is inserted, click **Exit** to close the dialog.



### Step 6

The dialog shown at right will be displayed. Click **Next**.

#### *No Driver Found*

If a message is displayed stating that Windows was unable to find a suitable driver, this may indicate that the Nikon Capture 4 CD was not correctly inserted in the CD-ROM drive or that the appropriate check box was not selected. Click **Back** to return to the dialog shown in Step 5, and confirm that your settings are correct.

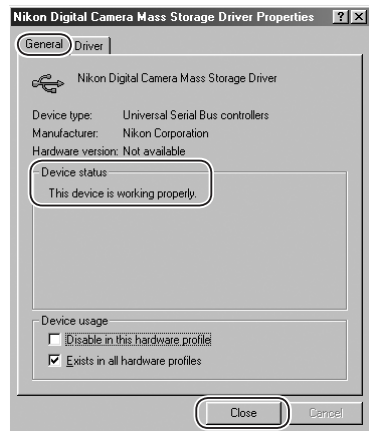


**Step 7**

A dialog will be displayed indicating that driver update was successful. Click **Finish** to close the dialog.

**Step 8**

Click the General tab in the Nikon Digital Camera Mass Storage Driver dialog and confirm that **This device is working properly** appears under **Device status**. Click **Close**.

**Step 9**

The wizard will now start installation of the Nikon Digital Camera Controller with the dialog shown at right. Click **Next**.



### Step 10

Select **Search for the best driver for your device** and click **Next**.



### Step 11

After confirming that the Nikon Capture 4 CD is inserted in the CD-ROM drive, check the **CD-ROM drive** option and click **Next**.



### Step 12

A dialog will be displayed stating that Windows has found the drivers for "Nikon Digital Camera Controller"; click **Next**.

#### *No Driver Found*

If a message is displayed stating that Windows was unable to find a suitable driver, this may indicate that the Nikon Capture 4 CD was not correctly inserted in the CD-ROM drive or that the appropriate check box was not selected. Click **Back** to return to the dialog shown in Step 11, and confirm that your settings are correct.



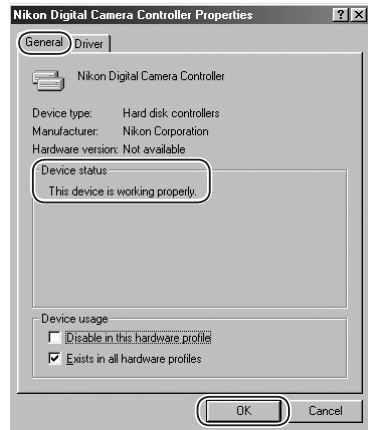


**Step 13**

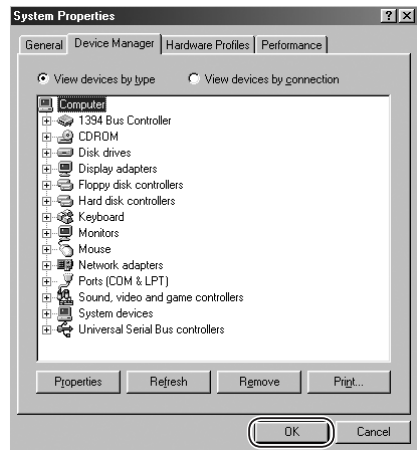
A dialog will be displayed indicating that driver update was successful. Click **Finish** to close the dialog.

**Step 14**

Click the General tab in the Nikon Digital Camera Controller Properties dialog and confirm that **This device is working properly** appears under **Device status**. Click **OK**.

**Step 15**

Click **OK** to close the System Properties dialog.



## COOLPIX990/COOLPIX 880

### Windows XP Home Edition/Professional

The following explanation uses COOLPIX990 as an example.

After installing Nikon Capture 4 and restarting the computer, connect your camera to the computer using a USB cable and turn the camera on. The camera will be registered automatically.



Follow the instructions below to check that the camera has been correctly registered with the system.

#### Step 1

Select **Control Panel** from the **Start** menu. In the Control Panel window, click the **Performance and Maintenance** icon to open the Performance and Maintenance window. Click the **System** icon in the Performance and Maintenance window to open the System Properties window. Select the **Hardware** tab and click the **Device Manager** button to open Device Manager dialog.



#### When the Camera Is Not Registered Automatically

If the computer fails to register the camera automatically, a message will appear instructing you to insert the system disk. Insert the Windows XP CD into the CD-ROM drive and click **OK**. If a warning is displayed, click **Continue Anyway** to install the device drivers.

#### Logging On

You will need to log on as Computer Administrator to register the camera.

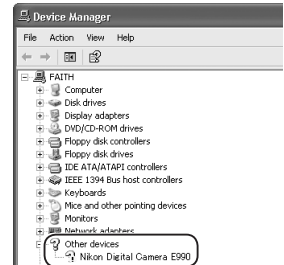
#### Before Connecting the Camera

Be sure to install Nikon Capture 4 before connecting your camera to the computer.

### Step 2

After confirming that **Imaging devices** is listed in the Device Manager dialog, click the plus sign (+) to its left. If no **Imaging devices** listing appears or if **Nikon Digital Camera E990** is listed under **Other Devices**, reinstall the device driver as instructed in “Reinstalling the Device Driver” ( 50).

If **Imaging devices** is not listed in the Device Manager and **Nikon Digital Camera E990** is not listed under **Other devices**, disconnect the camera and restart the computer. Reconnect the camera after the computer has restarted.



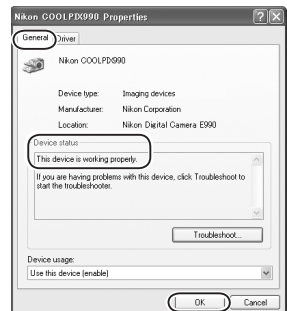
### Step 3

After confirming that **Nikon COOLPIX990** is listed under **Imaging devices**, double-click the listing to open the Properties window.



### Step 4

Click the General tab in the Nikon COOLPIX990 Properties dialog and confirm that **This device is working properly** appears under **Device status**. Click **OK**.



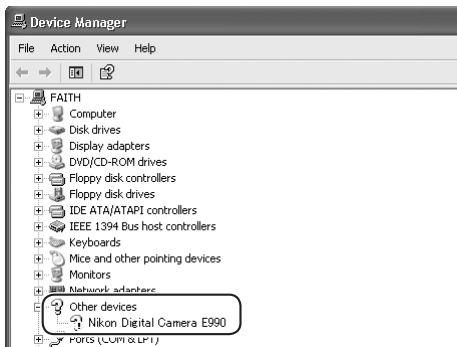
Device registration is now complete. Click **OK** to close the System Properties dialog.

## Reinstalling the Device Driver — Windows XP Home Edition/Professional

If **Nikon Digital Camera E990 (E880)** is listed under **Other devices**, you will need to reinstall the device driver.

### Step 1

Double-click the listing for the **Nikon Digital Camera E990** that appears under **Other devices**.



### Step 2

The Nikon Digital Camera E990 Properties dialog will be displayed. Open the General tab and click **Reinstall Driver**.



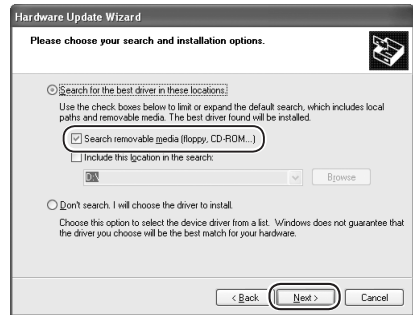
### Step 3

The Hardware Update Wizard will be displayed. Select **Install from a list or specific location** and click **Next**.

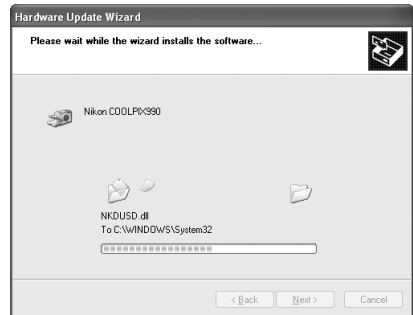


**Step 4**

The dialog shown at right will be displayed. Select **Search removable media** and click Next.

**Step 5**

The dialog shown at right will be displayed.

**Step 6**

A dialog will be displayed indicating that driver update was successful. Click **Finish** to close the dialog.



**Step 7**

Click the General tab in the Nikon COOLPIX990 Properties dialog and confirm that **This device is working properly** appears under **Device status**. Click **Close**.



Click **OK** to close the System Properties dialog.

## Windows 2000 Professional

The following explanation uses COOLPIX990 as an example.

After installing Nikon Capture 4 and restarting the computer, connect your camera to the computer using a USB cable and turn the camera on. The camera will be registered automatically.



Follow the instructions below to check that the camera has been correctly registered with the system.

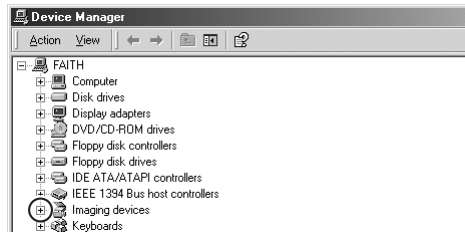
### Step 1

Right-click the **My Computer** icon on the desktop and select **Properties** from the menu that appears. The **System Properties** dialog will be displayed. Open the **Hardware** tab and click the **Device Manager** button in the Device Manager area.



### Step 2

After confirming that **Imaging devices** is listed in the Device Manager dialog, click the plus sign (+) to its left.



### Logging On

Log on as the Administrator when registering the camera.



### Before Connecting the Camera

Be sure to install Nikon Capture 4 before connecting your camera to the computer.



### When the Camera Is Not Registered Automatically

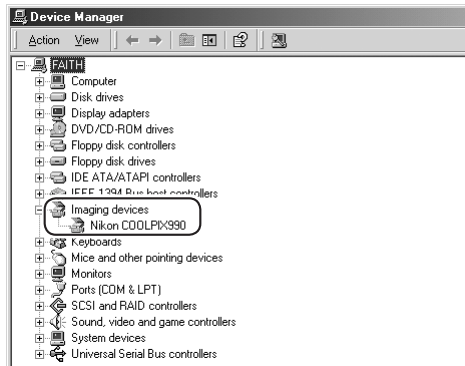
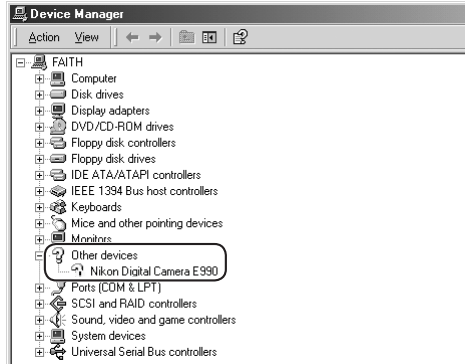
If the computer fails to register the camera automatically, a message will appear instructing you to insert the system disk. Insert the Windows 2000 Professional CD into the CD-ROM drive and click **OK**. A warning dialog may be displayed; click **Yes** to install the device drivers.

If no **Imaging devices** listing appears or if **Nikon Digital Camera E990** is listed under **Other Devices**, reinstall the device driver as instructed in “Reinstalling the Device Driver” (55).

If **Imaging devices** is not listed in the Device Manager and **Nikon Digital Camera E990** is not listed under **Other devices**, disconnect the camera and restart the computer. Reconnect the camera after the computer has restarted.

### Step 3

After confirming that **Nikon COOLPIX990** is listed under **Imaging devices**, double-click the listing to open the Properties window.



### Step 4

Click the General tab of the Nikon COOLPIX990 Properties dialog and confirm that **This device is working properly** appears under **Device status**. Click **OK**.



Device registration is now complete. Click **OK** to close the System Properties dialog.

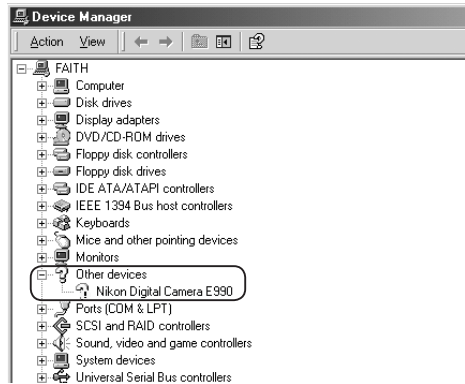


### Reinstalling the Device Driver — Windows 2000 Professional

If **Nikon Digital Camera E990 (E880)** is listed under **Other devices**, you will need to reinstall the device driver.

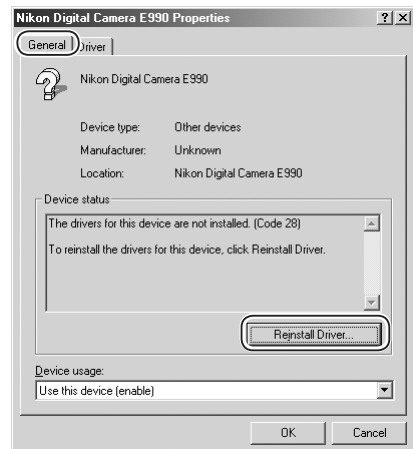
#### Step 1

Double-click the listing for the **Nikon Digital Camera E990** that appears under **Other devices**.



#### Step 2

The Nikon Digital Camera E990 Properties dialog will be displayed. Open the General tab and click **Reinstall Driver**.



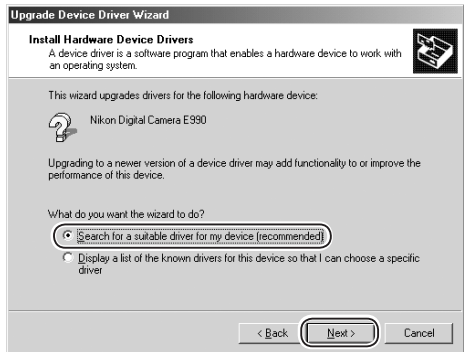
#### Step 3

The Upgrade Device Driver Wizard will be displayed; click **Next**.



### Step 4

The dialog shown at right will be displayed. Select **Search for a suitable driver for my device** and click **Next**.

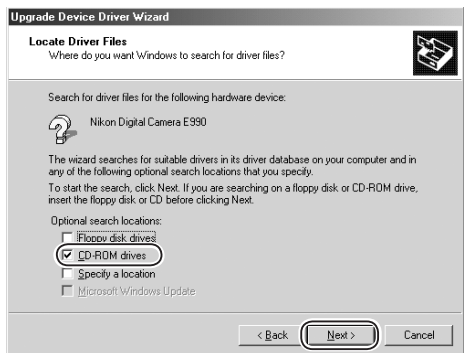


### Step 5

The dialog shown at right will be displayed. Insert the Nikon Capture 4 CD into the CD-ROM drive. To prevent the **Install Center** dialog from opening automatically, hold down the shift key while inserting the CD. Select the **CD-ROM drives** option and click **Next**.

#### *The Install Center Dialog*

If the Install Center dialog appears when the CD is inserted, click **Exit** to close the dialog.



### Step 6

The dialog shown at right will be displayed. Click **Next**.

#### *No Driver Found*

If a message is displayed stating that Windows was unable to find a suitable driver, this may indicate that the Nikon Capture 4 CD was not correctly inserted in the CD-ROM drive or that the appropriate check box was not selected. Click **Back** to return to the dialog shown in Step 5, and confirm that your settings are correct.

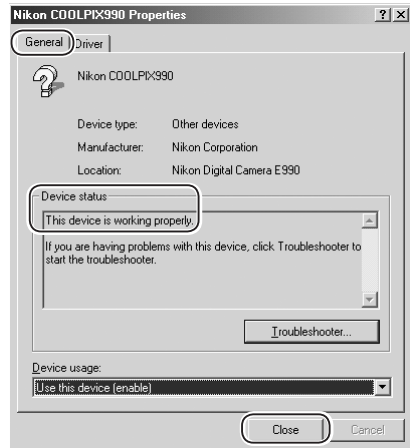


**Step 7**

A dialog will be displayed indicating that driver update was successful. Click **Finish** to close the dialog.

**Step 8**

Click the General tab of the Nikon COOLPIX990 Properties dialog and confirm that **This device is working properly** appears under **Device status**. Click **Close**.

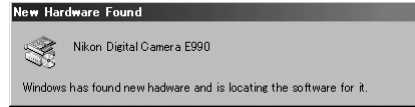


Click **OK** to close the System Properties dialog.

## Windows Millennium Edition (Me)

The following explanation uses COOLPIX990 as an example.

After installing Nikon Capture 4 and restarting the computer, connect your camera to the computer using a USB cable and turn the camera on. The camera will be registered automatically.

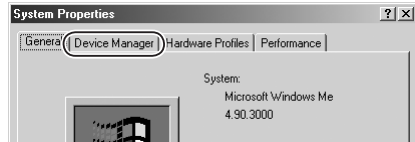


If a message is displayed prompting you to insert a disk, insert the Windows Millennium Edition CD into a CD-ROM drive and click **OK**.

Follow the instructions below to check that the camera has been correctly registered with the system.

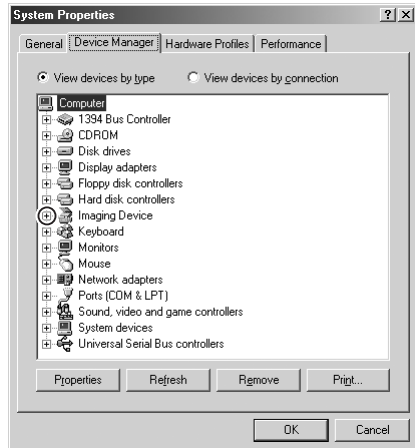
### Step 1

Right-click the **My Computer** icon on the desktop and select **Properties** from the menu that appears. The **System Properties** dialog will be displayed. Click the **Device Manager** tab.



### Step 2

After confirming that **Imaging Device** is listed in the Device Manager tab, click the plus sign (+) to its left.



### Before Connecting the Camera

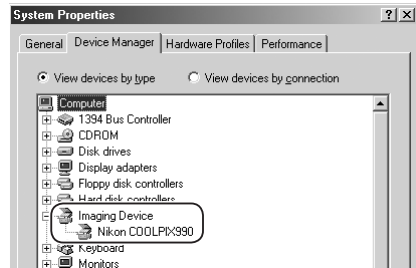
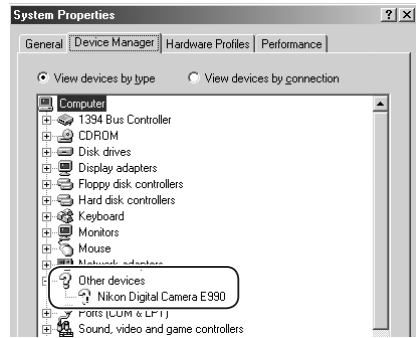
Be sure to install Nikon Capture 4 before connecting your camera to the computer.

If no **Imaging Device** listing appears or if **Nikon Digital Camera E990** is listed under **Other devices**, reinstall the device driver as instructed in “Reinstalling the Device Driver” (60).

If **Imaging Device** is not listed in the Device Manager and **Nikon Digital Camera E990** is not listed under **Other devices**, disconnect the camera and restart the computer. Reconnect the camera after the computer has restarted.

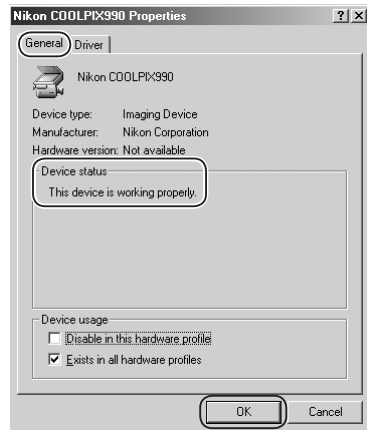
### Step 3

After confirming that **Nikon COOLPIX990** is listed under **Imaging Device**, double click the listing to open the Properties window.



### Step 4

The Nikon COOLPIX990 Properties dialog box will be displayed. Click the General tab and confirm that **This device is working properly** appears under **Device status**. Click **OK**.



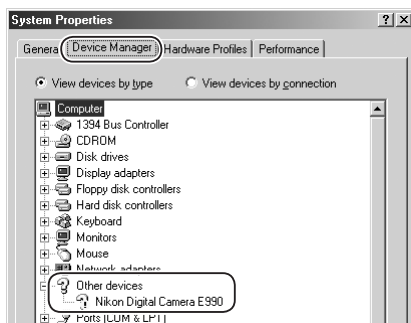
Device registration is now complete. Click **OK** to close the System Properties dialog.

## Reinstalling the Device Driver—Windows Millennium Edition (Me)

If **Nikon Digital Camera E990 (E880)** is listed under **Other devices**, you will need to reinstall the device driver.

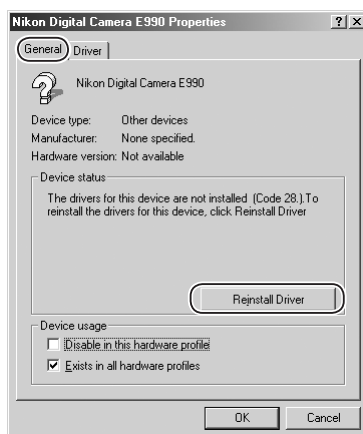
### Step 1

Double-click the listing for the **Nikon Digital Camera E990** that appears under **Other devices**.



### Step 2

The Nikon Digital Camera E990 Properties dialog will be displayed. Open the General tab and click **Reinstall Driver**.



### Step 3

The Update Device Driver Wizard will be displayed. Insert the Nikon Capture 4 CD into the CD-ROM drive. To prevent the **Install Center** dialog from opening automatically, hold down the shift key while inserting the CD. After confirming that **Automatic search for a better driver** is selected, click **Next** to update the device driver automatically.

### The Install Center Dialog

If the Install Center dialog appears when the CD is inserted, click **Exit** to close the dialog.

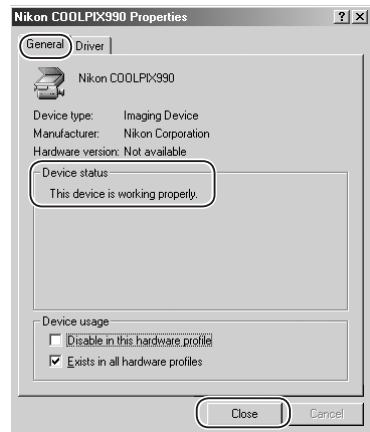


**Step 4**

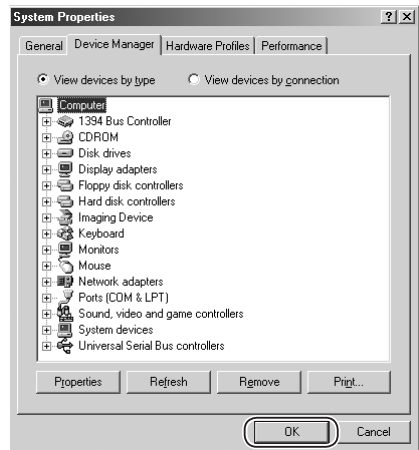
A dialog will be displayed indicating that driver update was successful. Click **Finish** to close the dialog.

**Step 5**

Click the General tab in the Nikon COOLPIX990 Properties dialog and confirm that **This device is working properly** appears under **Device status**. Click **Close**.

**Step 6**

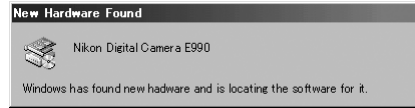
Click **OK** to close the System Properties dialog.



## Windows 98 Second Edition (SE)

The following explanation uses COOLPIX990 as an example.

After installing Nikon Capture 4 and restarting the computer, connect your camera to the computer using a USB cable and turn the camera on. The camera will be registered automatically.

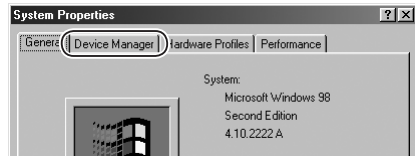


If a message is displayed prompting you to insert a disk, insert the Windows Second Edition CD into the CD-ROM drive and click **OK**.

Follow the instructions below to check that the camera has been correctly registered with the system.

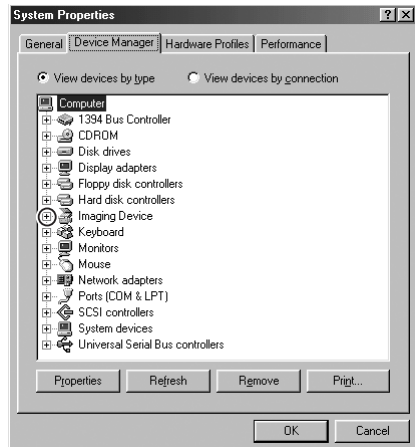
### Step 1

Right-click the **My Computer** icon on the desktop and select **Properties** from the menu that appears. The System Properties dialog will be displayed. Click the Device Manager tab.



### Step 2

After confirming that **Imaging Device** is listed in the Device Manager tab, click the plus sign (+) to its left.



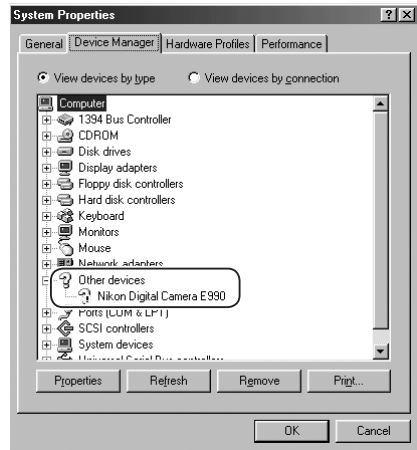
### Before Connecting the Camera

Be sure to install Nikon Capture 4 before connecting your camera to the computer.



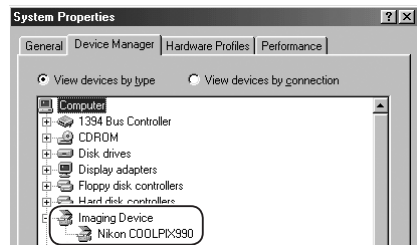
If no **Imaging Device** listing appears or if **Nikon Digital Camera E990** is listed under **Other devices**, reinstall the device driver as instructed in “Reinstalling the Device Driver” (64).

If **Imaging Device** is not listed in the Device Manager and **Nikon Digital Camera E990** is not listed under **Other devices**, disconnect the camera and restart the computer. Reconnect the camera after the computer has restarted.



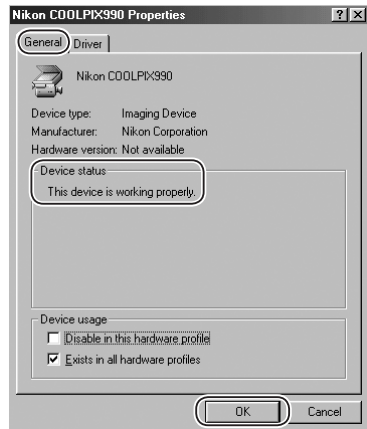
### Step 3

After confirming that **Nikon COOLPIX990** is listed under **Imaging Device**, double-click the listing to open the Properties window.



### Step 4

The Nikon COOLPIX990 Properties dialog will be displayed. Click the **General** tab and confirm that **This device is working properly** appears under **Device status**. Click **OK**.



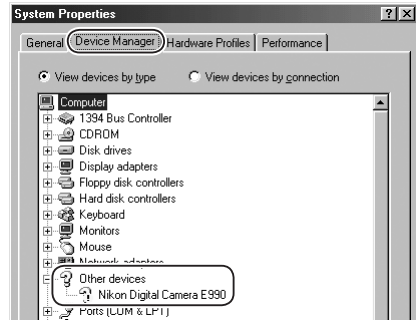
Device registration is now complete. Click **OK** to close the System Properties dialog.

### Reinstalling the Device Driver—Windows 98 Second Edition (SE)

If **Nikon Digital Camera E990 (E880)** is listed under **Other devices**, you will need to reinstall the device driver.

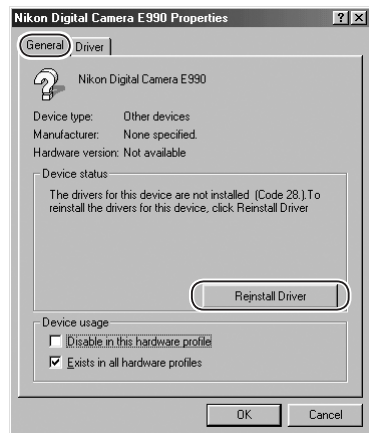
#### Step 1

Double-click the listing for the **Nikon Digital Camera E990** that appears under **Other devices**.



#### Step 2

The Nikon Digital Camera E990 Properties dialog will be displayed. Open the General tab and click **Reinstall Driver**.



#### Step 3

The Update Device Driver Wizard will be displayed; click **Next**.



### Step 4

The dialog shown at right will be displayed. Select **Search for a better driver than the one your device is using now** and click **Next**.



### Step 5

The dialog shown at right will be displayed. Insert the Nikon Capture 4 CD into the CD-ROM drive. To prevent the **Install Center** dialog from opening automatically, hold down the shift key while inserting the CD. Select the **CD-ROM drive** option and click **Next**.

#### *The Install Center Dialog*

If the Install Center dialog appears when the CD is inserted, click **Exit** to close the dialog.



### Step 6

The dialog shown at right will be displayed; click **Next**.

#### *No Driver Found*

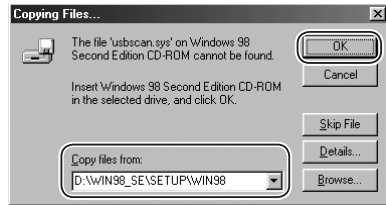
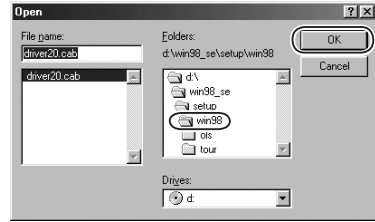
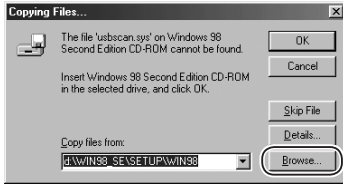
If a message is displayed stating that Windows was unable to find a suitable driver, this may indicate that the Nikon Capture 4 CD was not correctly inserted in the CD-ROM drive or that the appropriate check box was not selected. Click **Back** to return to the dialog shown in Step 5, and confirm that your settings are correct.



If prompted to insert a disk, insert the Windows 98 (Second Edition) CD and click **OK**.



If the computer displays a dialog stating that `usbscan.sys` was not found, click **Browse...**. Double-click the **win98** folder and click **OK**.



Confirm that the **win98** folder on the CD-ROM is displayed under **Copy files from** and click **OK**.

### *The Windows 98 (Second Edition) CD*

If the opening dialog for the Windows 98 (Second Edition) CD is displayed, click the close box to exit the dialog.

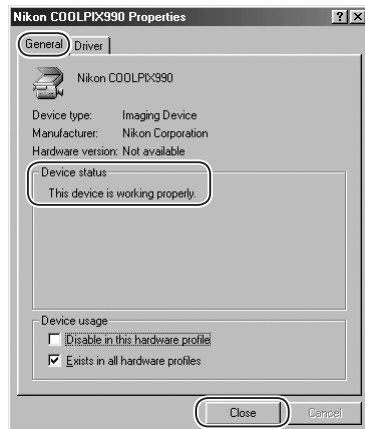
### Step 7

A dialog will be displayed indicating that driver update was successful. Click **Finish** to close the dialog.



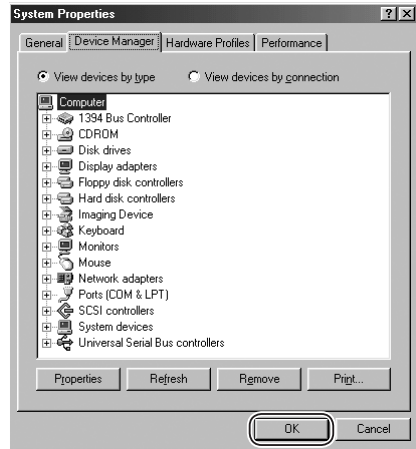
### Step 8

Click the General tab in the Nikon COOLPIX990 Properties dialog and confirm that **This device is working properly** appears under Device status. Click **Close**.



**Step 9**

Click **OK** to close the System Properties dialog.



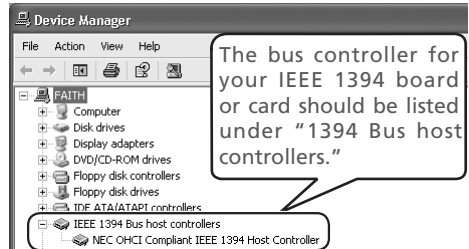
## D1-Series Cameras

### Windows XP Home Edition/Professional

#### Before You Begin

Confirm that your OHCI-compliant IEEE 1394 interface board or card has been correctly registered with the system.

Select **Control Panel** from the **Start** menu. In the Control Panel window, click the **Performance and Maintenance** icon to open the Performance and Maintenance window. Click the **System** icon in the Performance and Maintenance window to open the System Properties window. Select the **Hardware** tab and click the **Device Manager** button to open Device Manager window shown at right.



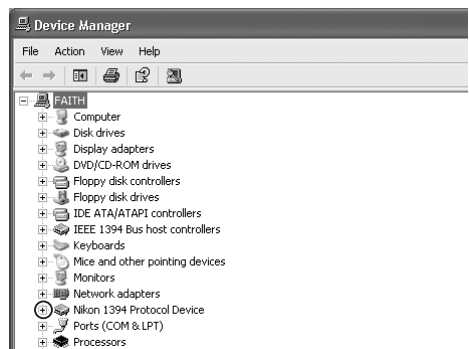
If “IEEE 1394 Bus host controllers” is not listed in the **Device Manager**, or if your IEEE 1394 interface board or card is listed as an unknown or miscellaneous device or is preceded by a red or yellow warning icon, follow the instructions in the manual provided with the board to ensure that the drivers are properly installed.

After installing Nikon Capture 4 and restarting the computer, connect your camera to the computer using an IEEE 1394 cable and turn the camera on. The camera will be registered automatically.

Follow the instructions below to check that the camera has been correctly registered with the system.

#### Step 1

Select **Control Panel** from the **Start** menu to open the Control Panel window. Click the **Performance and Maintenance** icon inside the Control Panel window to open the Performance and Maintenance window. Click the **System** icon inside the Performance and Maintenance window to open the System Properties window. Select the **Hardware** tab and click the **Device Manager** button to open Device Manager window. After confirming that “Nikon 1394 Protocol Device” is listed in the Device Manager, click the “+” sign to its left.



#### Logging On

You will need to log on as the “Computer Administrator” to register your camera.

#### Before Connecting the Camera

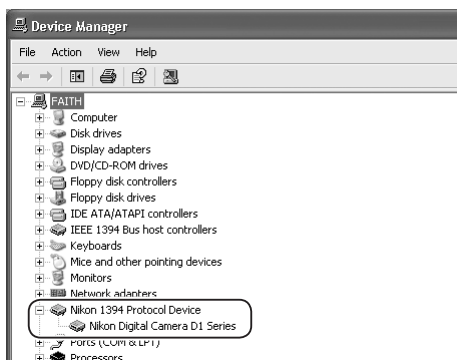
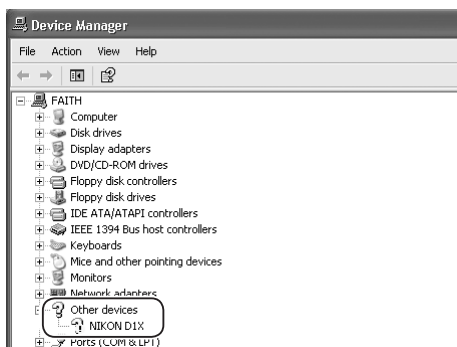
Be sure to install Nikon Capture 4 before connecting your camera to the computer.

If no “Nikon 1394 Protocol Device” listing appears or if “NIKON D1X” (or “D1” or “D1H”) is listed under **Other Devices**, reinstall the device driver as instructed in “Reinstalling the Device Driver” (p. 70).

If “Nikon 1394 Protocol Device” is not listed in the Device Manager and “NIKON D1X” (or “D1” or “D1H”) is not listed under **Other Devices**, disconnect the camera, and restart the computer. When the computer has restarted, reconnect the camera.

### Step 2

After confirming that “Nikon Digital Camera D1 Series” is listed under “Nikon 1394 Protocol Device,” double-click the listing to open the Properties window.



### Step 3

The Nikon Digital Camera D1 Series Properties dialog will be displayed. Click the General tab and confirm that “This device is working properly” appears under “Device status”. Click **OK**.



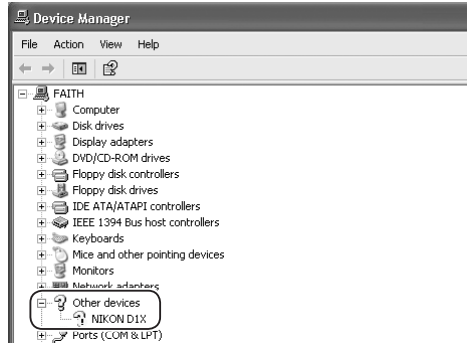
Close the Device Manager, then click **OK** to close the System Properties window. Device registration is now complete.

### Reinstalling the Device Driver—Windows XP Home Edition /Professional

If "NIKON D1X" (or "D1" or "D1H") appears under "Other Devices," reinstall the device driver as instructed below.

#### Step 1

Open the Device Manager dialog. Double-click the listing for the Nikon D1X (or D1 or D1H) that appears under "Other devices." The Properties dialog will be displayed.



#### Step 2

Open the General tab and click **Reinstall Driver...**



#### Step 3

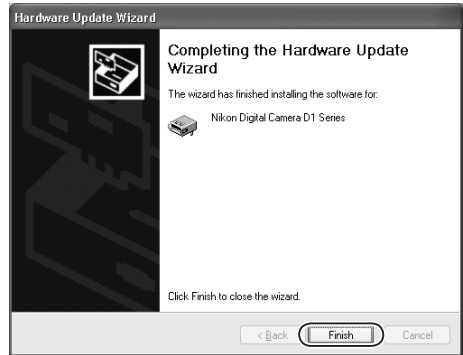
The "Hardware Update Wizard" dialog will appear. Holding down the shift key to prevent the Install Center dialog from opening automatically, insert the Nikon Capture 4 CD into the CD-ROM drive. (If the shift key is not held down, the Install Center dialog will appear when the CD-ROM is inserted.) Select **Install the software automatically** and click **Next**.



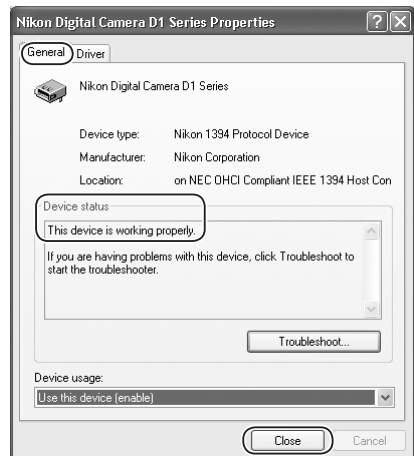


**Step 4**

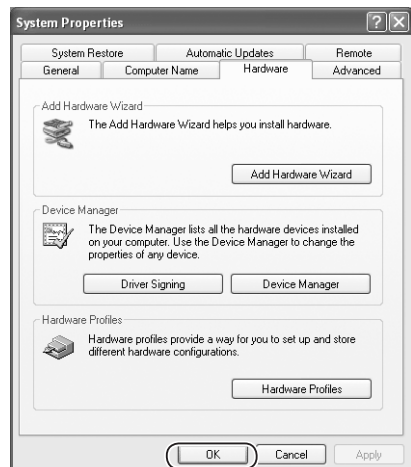
When the driver installation has been completed, the dialog shown at right will be displayed; click **Finish** to close the wizard.

**Step 5**

Confirm that “This device is working properly” appears under “Device status” in the General Tab of the Nikon Digital Camera D1 Series Properties dialog. Click **Close**.

**Step 6**

Close the Device Manager, then click **OK** to close the System Properties window.

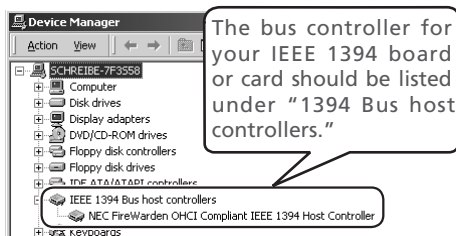


## Windows 2000 Professional

### Before You Begin

Confirm that your OHCI-compliant IEEE 1394 interface board or card has been correctly registered with the system.

Click the **My Computer** icon on the desktop with the right mouse button and select **Properties** from the menu that appears to display the System Properties dialog. Open the Hardware tab and click the **Device Manager...** button in the Device Manager section.



If "1394 Bus host controllers" does not appear in the Device Manager, or if your IEEE 1394 interface board or card is listed as an unknown or miscellaneous device or is preceded by a red or yellow warning icon, follow the instructions in the manual provided with the board to ensure that the drivers are properly installed.

After installing Nikon Capture 4 and restarting the computer, connect your camera to the computer using an IEEE 1394 cable and turn on the camera. The camera is registered automatically.

Follow the instructions below to check that the camera has been correctly registered with the system.

### Step 1

Once registration is complete, check that the D1X (or D1 or D1H) has been correctly registered with the system. Click the **My Computer** icon on the desktop with the right mouse button and select **Properties** from the menu that appears to display the System Properties dialog. Open the Hardware tab and click the **Device Manager...** button in the Device Manager section.




### Logging On

You will need to log on as "Administrator" to register the D1, D1X, or D1H.

### Before Connecting the Camera

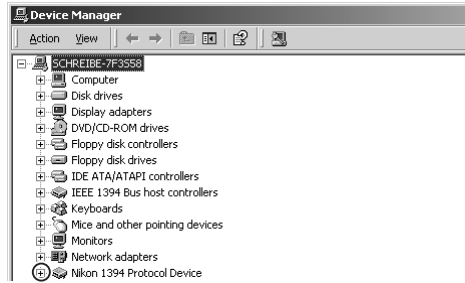
Be sure to install Nikon Capture 4 before connecting your camera to the computer.

### Updating the Drivers for the D1

If you are already using the D1 with Nikon View DX or an earlier version of Nikon Capture, you will need to update the camera drivers as described under "Updating the Drivers for the D1" ( 78).

### Step 2

The Device Manager will be displayed. After confirming that “Nikon 1394 Protocol Device” is listed in the Device Manager, click the “+” sign to its left.



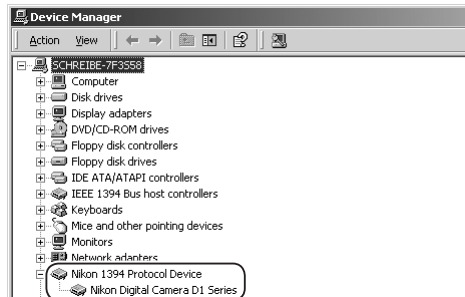
If no “Nikon 1394 Protocol Device” listing appears or if “NIKON D1X” (or “D1” or “D1H”) is listed under **Other Devices**, reinstall the device driver as instructed in “Reinstalling the Device Driver” (74).

If “Nikon 1394 Protocol Device” is not listed in the Device Manager and “NIKON D1X” (or “D1” or “D1H”) is not listed under **Other Devices**, disconnect the camera, and restart the computer. When the computer has restarted, reconnect the camera.



### Step 3

After confirming that “Nikon Digital Camera D1 Series” is listed under “Nikon 1394 Protocol Device,” double-click the listing to open the Properties window.



**Step 4**

The Nikon Digital Camera D1 Series Properties dialog will be displayed. Click the General tab and confirm that “This device is working properly” appears under “Device status”. Click **Close**.



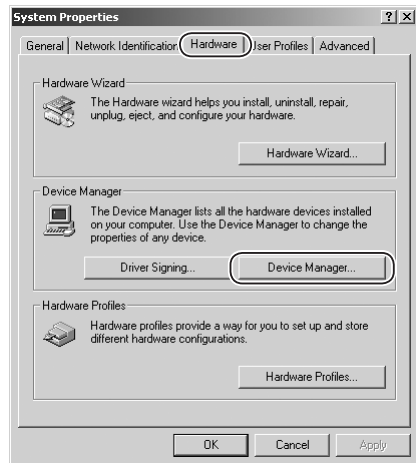
Close the Device Manager, then click **OK** to close the System Properties window. Device registration is now complete.

**Reinstalling the Device Driver—Windows 2000 Professional**

If “Nikon 1394 Protocol Device” is listed under “Other Devices,” reinstall the device driver as described below.

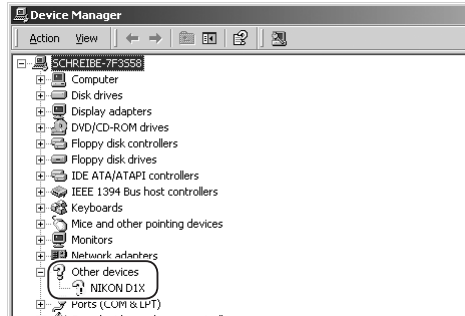
**Step 1**

Click the **My Computer** icon on the desktop with the right mouse button and select **Properties** from the menu that appears to display the System Properties dialog. Open the Hardware tab and click the **Device Manager...** button in the Device Manager section.

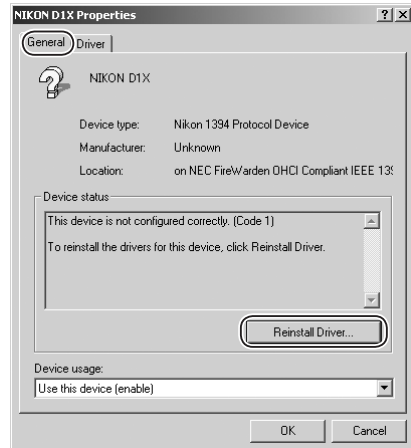


**Step 2**

The Device Manager will be displayed. Double-click the listing for the Nikon D1X (or D1 or D1H) that appears under "Other Devices" or "Miscellaneous Devices."

**Step 3**

Open the General tab and click **Reinstall Driver...**

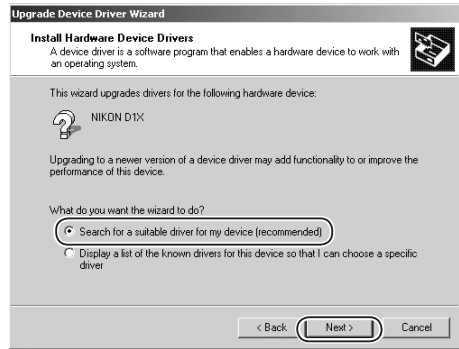
**Step 4**

The Upgrade Device Driver Wizard will be displayed; click **Next**.



## Step 5

Select the search option and click **Next**.

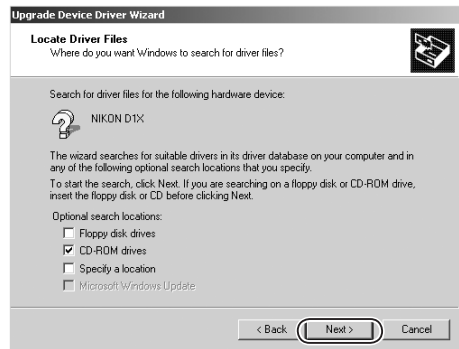


## Step 6

The dialog shown at right will be displayed. Holding down the shift key to prevent the Install Center dialog from opening automatically, insert the Nikon Capture 4 CD into the CD-ROM drive. Select **CD-ROM drives** and click **Next**.

### *The Welco5me Dialog*

If the Install Center dialog appears when the CD is inserted, click the **Quit** button to close the dialog.

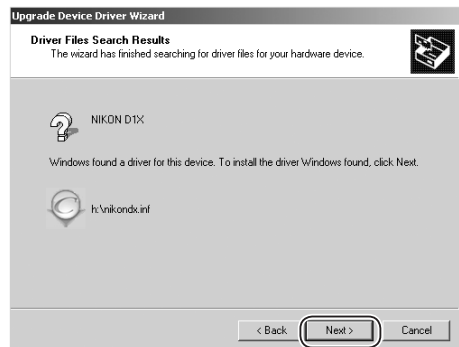


## Step 7

The dialog shown at right will be displayed; click **Next**.

### *No Driver Found*

If the message, "Windows was unable to find a suitable driver for this device," is displayed, this may indicate that the Nikon Capture 4 CD was not correctly inserted in the CD-ROM drive or that the correct search location was not specified. Click **Back** to return to the dialog shown in Step 6, where you can confirm that the correct location has been specified.



**Step 8**

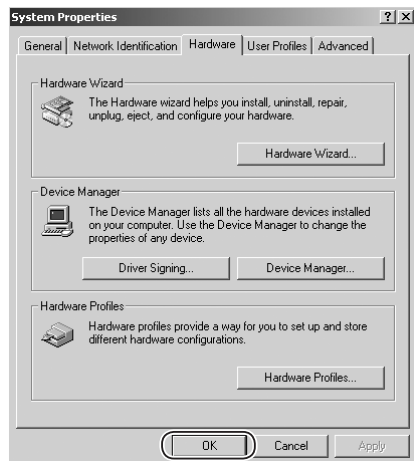
The dialog shown at right will be displayed; click **Finish**.

**Step 9**

Confirm that “This device is working properly” appears under “Device status” in the General Tab of the Nikon Digital Camera D1 Series Properties dialog. Click **Close**.

**Step 10**

Close the Device Manager, then click **OK** to close the System Properties window.



## Updating the Drivers for the D1 — Windows 2000 Professional

If you are already using the D1 with Nikon View DX or Nikon Capture, you will need to update the camera driver.

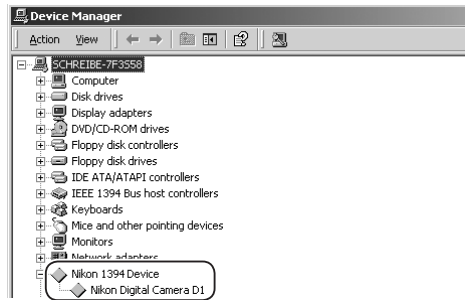
### Step 1

Click the **My Computer** icon on the desktop with the right mouse button and select **Properties** from the menu that appears to display the System Properties dialog. Open the Hardware tab and click the **Device Manager...** button in the Device Manager section.



### Step 2

The Device Manager will be displayed. Under the entry "Nikon 1394 Device," double-click "Nikon Digital Camera D1."



### Step 3

The Nikon Digital Camera D1 Properties dialog will be displayed. Open the Driver tab and click **Update Driver...**



## Logging On

You will need to log on as "Administrator" to update the device drivers.

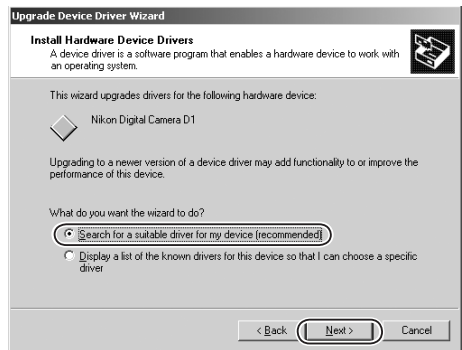


**Step 4**

The Upgrade Device Driver Wizard will be displayed; click **Next**.

**Step 5**

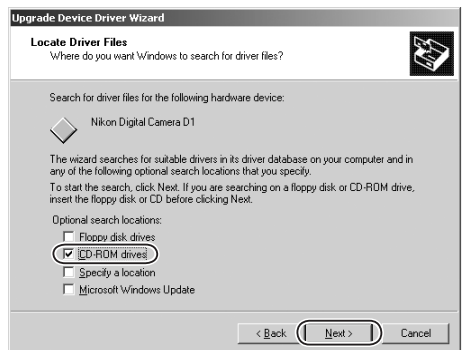
The dialog shown at right will be displayed. Select the search option and click **Next**.

**Step 6**

The dialog shown at right will be displayed. Holding down the shift key to prevent the Install Center dialog from opening automatically, insert the Nikon Capture 4 CD into the CD-ROM drive. Select **CD-ROM drives** and click **Next**.

*The Install Center Dialog*

If the Install Center dialog appears when the CD is inserted, click the **Quit** button to close the dialog.



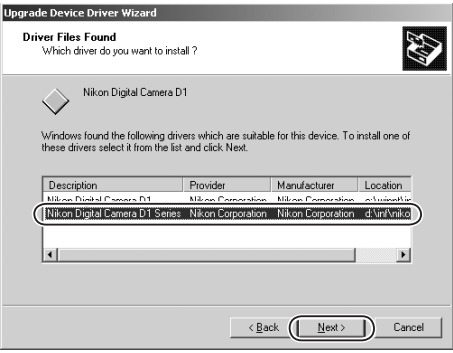
Step 7

The dialog shown at right will be displayed. Select “Install one of the other drivers” and click **Next**.



Step 8

Select Nikon Digital Camera D1 Series from the dialog at right and click **Next**.



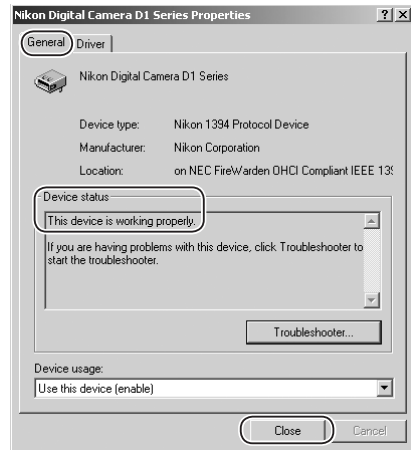
Step 9

The dialog shown at right will be displayed; click **Finish**.

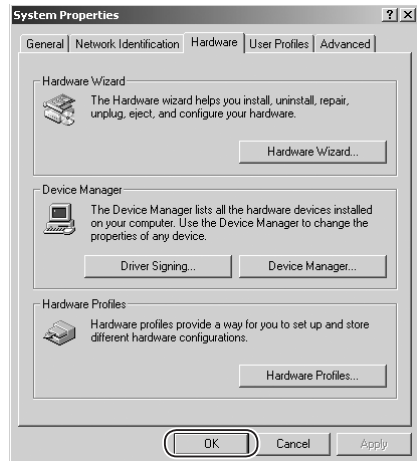


**Step 10**

Confirm that “This device is working properly” appears under “Device status” in the General Tab of the Nikon Digital Camera D1 Series Properties dialog. Click **Close**.

**Step 11**

Close the Device Manager, then click **OK** to close the System Properties window.



***Troubleshooting***

- If "1394 Bus host Controller" is not displayed in the Device Manager, if the IEEE 1394 board or card is listed under "Other Devices" or "Miscellaneous Devices," or if the listing for the IEEE 1394 board or card is preceded by a red or yellow warning icon...

...the computer does not recognize the IEEE 1394 board or card. Refer to the documentation provided with your computer or IEEE 1394 board or card for information on registering the board or card with the system.

- If "1394 Bus host Controller" is listed in the Device Manager but the entry for the Nikon D1 (or D1X or D1H) does not appear...

...check the following:

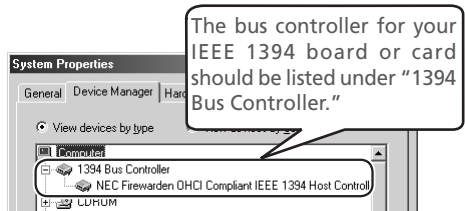
- Is the camera on?
- Is the battery fully charged? If you are using an AC adapter (available separately), is it properly connected?
- Is the mode dial set to "PC"?
- Is the IEEE 1394 cable properly connected?

## Windows Millennium Edition (Me)

### *Before You Begin*

Confirm that the OHCI-compliant IEEE 1394 interface board has been correctly registered with the system.

Click the **My Computer** icon on the desktop with the right mouse button and select **Properties** from the menu that appears. The System Properties dialog will be displayed; click the Device Manager tab.



If "1394 Bus Controller" is not listed in the Device Manager, or if your IEEE 1394 interface board or card is listed as an unknown or miscellaneous device or is preceded by red or yellow warning icons, follow the instructions in the manual provided with the board to ensure that the drivers are properly installed.

After installing Nikon Capture 4 and restarting the computer, connect your camera to the computer using an IEEE 1394 cable and turn on the camera. The camera will be registered automatically.

Follow the instructions below to check that the camera has been correctly registered with the system.

### **Step 1**

Once registration is complete, check that the D1X (or D1 or D1H) has been correctly registered with the system. Click the **My Computer** icon on the desktop with the right mouse button and select **Properties** from the menu that appears. The System Properties dialog will be displayed; click the Device Manager tab.



### **Before Connecting the Camera**

Be sure to install Nikon Capture 4 before connecting your camera to the computer.

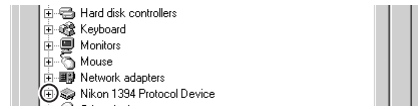


### **Updating the Drivers for the D1**

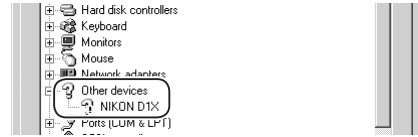
If you are already using the D1 with Nikon View DX or Nikon Capture, you will need to update the camera drivers as described in "Updating the Drivers for the D1" (87).

**Step 2**

The Device Manager sheet will be displayed. After confirming that “Nikon 1394 Protocol Device” is listed in the Device Manager, click the “+” sign to its left.



If no “Nikon 1394 Protocol Device” listing appears or if “NIKON D1X” (or “D1” or “D1H”) is listed under **Other Devices**, reinstall the device driver as instructed in “Reinstalling the Device Driver” (85).



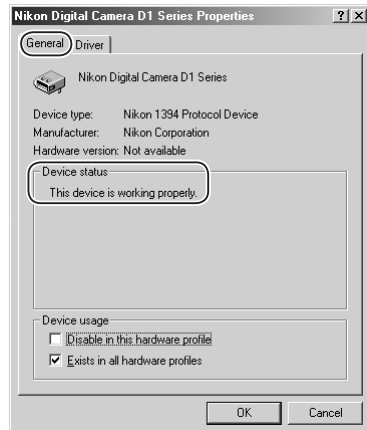
If “Nikon 1394 Protocol Device” is not listed in the Device Manager and “NIKON D1X” (or “D1” or “D1H”) is not listed under **Other Devices**, disconnect the camera, and restart the computer. When the computer has restarted, reconnect the camera to the computer.

**Step 3**

After confirming that “Nikon Digital Camera D1 Series” is listed under “Nikon 1394 Protocol Device,” double click the listing to open the Properties window.

**Step 4**

The Nikon Digital Camera D1 Series Properties dialog will be displayed. Click the General tab and confirm that “This device is working properly” appears under “Device status.” Click **OK**.



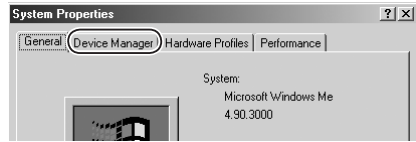
Click **OK** to close the System Properties window. Device registration is now complete.

### Reinstalling the Device Driver—Windows Millennium Edition (Me)

If “Nikon 1394 Protocol Device” is listed Other Devices, reinstall the device driver as described below.

#### Step 1

Click the **My Computer** icon on the desktop with the right mouse button and select **Properties** from the menu that appears. The System Properties dialog will be displayed; click the Device Manager tab.



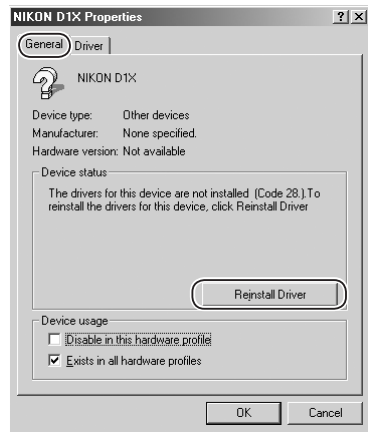
#### Step 2

The Device Manager sheet will be displayed. Double-click the listing for the Nikon D1X (or D1 or D1H) that appears under “Other Devices” or “Miscellaneous Devices.”



#### Step 3

The NIKON D1X (or D1 or D1H) Properties dialog will be displayed. Open the General tab and click **Reinstall Driver...**



#### Step 4

The Update Device Driver Wizard will be displayed. Holding down the shift key to prevent the Install Center dialog from opening automatically, insert the Nikon Capture 4 CD into the CD-ROM drive. Confirm that “Automatic search for a better driver (Recommended)” is selected and click **Next**. The wizard will automatically update the device drivers.

#### The Install Center Dialog

If the Install Center dialog appears when the CD is inserted, click the **Quit** button to close the dialog.

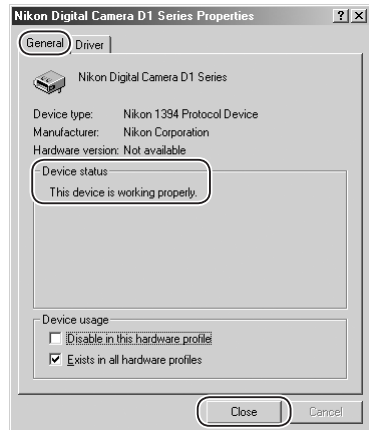


**Step 5**

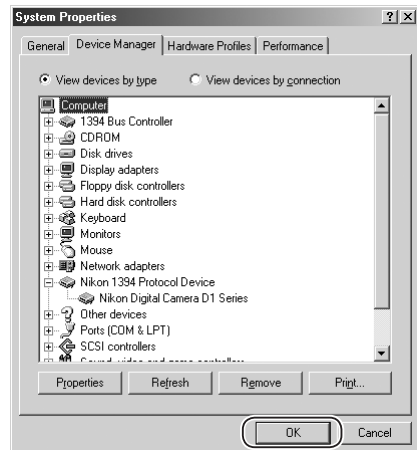
The dialog shown at right will be displayed; click **Finish**.

**Step 6**

Confirm that "This device is working properly" appears under "Device status" in the General Tab of the Nikon Digital Camera D1 Series Properties dialog. Click **Close**.

**Step 7**

Click **OK** to close the System Properties window.



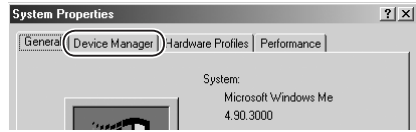


### Updating the Drivers for the D1 — Windows Millennium Edition (Me)

If you are already using the D1 with Nikon View DX or Nikon Capture, you will need to update the camera driver.

#### Step 1

Click the **My Computer** icon on the desktop with the right mouse button and select **Properties** from the menu that appears. The System Properties dialog will be displayed; click the Device Manager tab.



#### Step 2

The Device Manager sheet will be displayed. Under the entry "Nikon 1394 Device," double-click "Nikon Digital Camera D1."



#### Step 3

The Nikon Digital Camera D1 Series Properties dialog will be displayed. Open the Driver tab and click **Update Driver....**



#### Step 4

The Update Device Driver Wizard will be displayed. Holding down the shift key to prevent the Install Center dialog from opening automatically, insert the Nikon Capture 4 CD into the CD-ROM drive, select **Automatic Search for a Better Driver (Recommended)**, and click **Next**. The wizard will automatically update the device drivers.

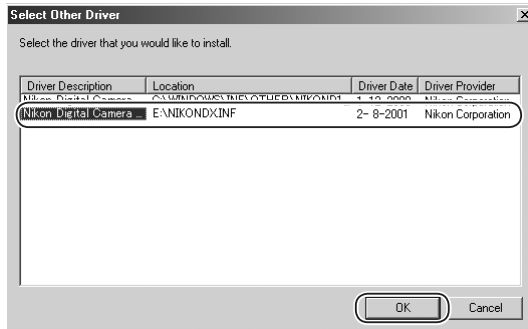
#### The Install Center Dialog

If the Install Center dialog appears when the CD is inserted, click the **Quit** button to close the dialog.



**Step 5**

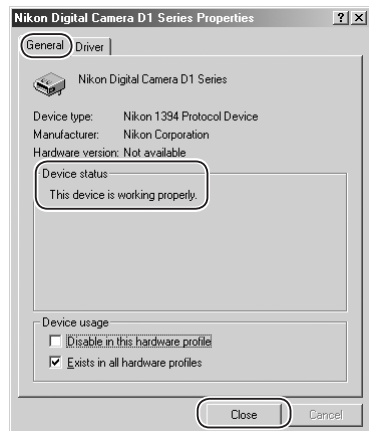
The dialog shown below will be displayed. Select the driver located at “(Drive letter for CD-ROM drive):\” and click **OK**.

**Step 6**

The dialog shown at right will be displayed; click **Finish**.

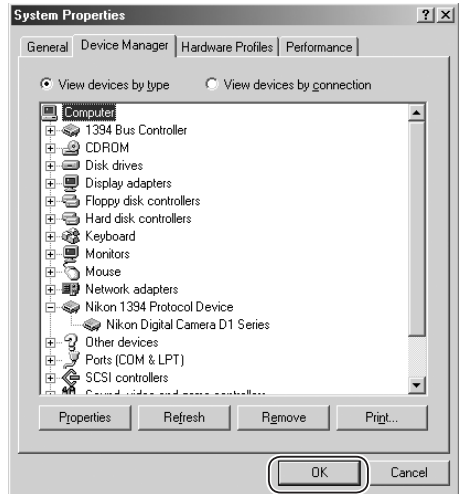
**Step 7**

Confirm that “This device is working properly” appears under “Device status” in the General Tab of the Nikon Digital Camera D1 Series Properties dialog. Click **Close**.



**Step 8**

Click **OK** to close the System Properties window.

**Troubleshooting**

- If "1394 Bus Controller" is not displayed in the Device Manager, if the IEEE 1394 board or card is listed under "Other Devices" or "Miscellaneous Devices," or if the listing for the IEEE 1394 board or card is preceded by a red or yellow warning icon...

...the computer does not recognize the IEEE 1394 board or card. Refer to the documentation provided with your computer or IEEE 1394 board or card for information on registering the board or card with the system.

- If "1394 Bus Controller" is listed in the Device Manager but the entry for the Nikon D1X (or D1 or D1H) does not appear...

...check the following:

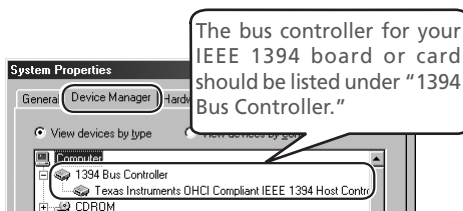
- Is the camera on?
- Is the battery fully charged? If you are using an AC adapter (available separately), is it properly connected?
- Is the mode dial set to "PC"?
- Is the IEEE 1394 cable properly connected?

## Windows 98 Second Edition (SE)

### Before You Begin

Confirm that your OHCI-compliant IEEE 1394 interface board or card has been correctly registered with the system.

Click the **My Computer** icon on the desktop with the right mouse button and select **Properties** from the menu that appears. The System Properties dialog will be displayed; click the Device Manager tab.



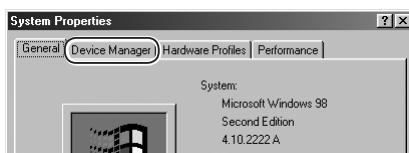
If "1394 Bus Controller" is not listed in the Device Manager, or if your IEEE 1394 interface board or card is listed as an unknown or miscellaneous device or is preceded by a red or yellow warning icon, follow the instructions in the manual provided with the board to ensure that the drivers are properly installed.

After installing Nikon Capture 4 and restarting the computer, connect your camera to the computer using an IEEE 1394 cable and turn on the camera. The camera is registered automatically.


Follow the instructions below to check that the camera has been correctly registered with the system.

### Step 1

Once registration is complete, check that the D1X (or D1 or D1H) has been correctly registered with the system. Click the **My Computer** icon on the desktop with the right mouse button and select **Properties** from the menu that appears. The System Properties dialog will be displayed; click the Device Manager tab.



### Updating the Drivers for the D1

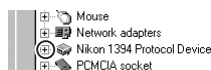
If you are already using the D1 with Nikon View DX or an earlier version of Nikon Capture, you will need to update the camera drivers as described in "Updating the Drivers for the D1" ( 95).

### Before Connecting the Camera

Be sure to install Nikon Capture 4 before connecting your camera to the computer.

**Step 2**

The Device Manager sheet will be displayed. After confirming that "Nikon 1394 Protocol Device" is listed in the Device Manager, click the "+" sign to its left.



If no "Nikon 1394 Protocol Device" listing appears or if "NIKON D1X" (or "D1" or "D1H") is listed under **Other Devices**, reinstall the device driver as instructed in "Reinstalling the Device Driver" (p. 92).



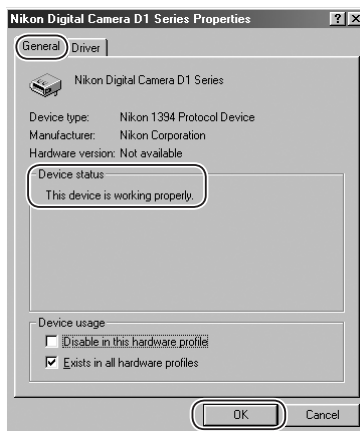
If "Nikon 1394 Protocol Device" is not listed in the Device Manager and "NIKON D1X" (or "D1" or "D1H") is not listed under **Other Devices**, disconnect the camera, and restart the computer. When the computer has restarted, reconnect the camera to the computer.

**Step 3**

After confirming that "Nikon Digital Camera D1 Series" is listed under "Nikon 1394 Protocol Device," double click the listing to open the Properties window.

**Step 4**

The Nikon Digital Camera D1 Series Properties dialog will be displayed. Click the General tab and confirm that "This device is working properly" appears under "Device status." Click **OK**.



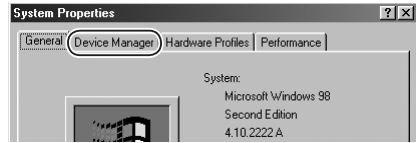
Click **OK** to close the System Properties window. Device registration is now complete.

### Reinstalling the Device Driver—Windows 98 Second Edition (SE)

If “Nikon 1394 Protocol Device” is listed under Other Devices, reinstall the device driver as described below.

#### Step 1

Click the **My Computer** icon on the desktop with the right mouse button and select **Properties** from the menu that appears. The System Properties dialog will be displayed; click the Device Manager tab.



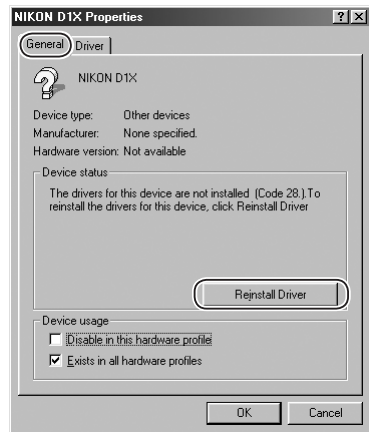
#### Step 2

The Device Manager sheet will be displayed. Double-click the listing for the Nikon D1X (or D1 or D1H) that appears under “Other Devices” or “Miscellaneous Devices.”



#### Step 3

The NIKON D1X (or D1 or D1H) Properties dialog will be displayed. Open the General tab and click **Reinstall Driver**.



#### Step 4

The Update Device Driver Wizard will be displayed; click **Next**.



### Step 5

The dialog shown at right will be displayed. Select "Search for a better driver than the one your device is using now. (Recommended)" and click **Next**.



### Step 6

The dialog shown at right will be displayed. Holding down the shift key to prevent the Install Center dialog from opening automatically, insert the Nikon Capture 4 CD into the CD-ROM drive. Select **CD-ROM drive** and click **Next**.

#### *The Install Center Dialog*

If the Install Center dialog appears when the CD is inserted, click the **Quit** button to close the dialog.



### Step 7

A dialog will be displayed stating that Windows has found the drivers for "Nikon Digital Camera D1 Series"; click **Next**.

#### *No Driver Found*

If the message, "Windows was unable to find a suitable driver for this device," is displayed, this may indicate that the Nikon Capture 4 CD was not correctly inserted in the CD-ROM drive or that the correct search location was not specified. Click **Back** to return to the dialog shown in Step 6, where you can confirm that the correct location has been specified.

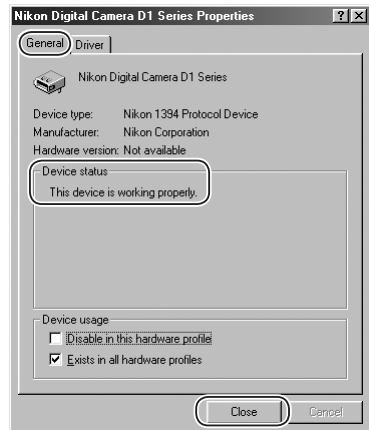


**Step 8**

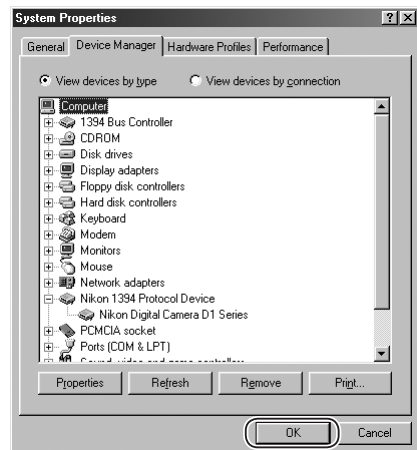
The dialog shown at right will be displayed; click **Finish**.

**Step 9**

Confirm that "This device is working properly" appears under "Device status" in the General Tab of the Nikon Digital Camera D1 Series Properties dialog. Click **Close**.

**Step 10**

Click **OK** to close the System Properties window.





### Updating Driver for the D1—Windows 98 Second Edition (SE)

If you are already using the D1 with Nikon View DX or Nikon Capture, you will need to update the camera driver.

#### Step 1

Click the **My Computer** icon on the desktop with the right mouse button and select **Properties** from the menu that appears. The System Properties dialog will be displayed; click the Device Manager tab.



#### Step 2

The Device Manager sheet will be displayed. Under the entry "Nikon 1394 Device," double-click "Nikon Digital Camera D1."



#### Step 3

The Nikon Digital Camera D1 Series Properties dialog will be displayed. Open the Driver tab and click **Update Driver...**



#### Step 4

The Update Device Driver Wizard will be displayed; click **Next**.



### Step 5

The dialog shown at right will be displayed. Select “Search for a better driver than the one your device is using now. (Recommended)” and click **Next**.



### Step 6

The dialog shown at right will be displayed. Holding down the shift key to prevent the Install Center dialog from opening automatically, insert the Nikon Capture 4 CD into the CD-ROM drive. Select **CD-ROM drive** and click **Next**.

#### *The Install Center Dialog*

If the Install Center dialog appears when the CD is inserted, click the **Quit** button to close the dialog.



### Step 7

A dialog will be displayed stating that Windows has found the drivers for “Nikon Digital Camera D1 Series.” Click **Next**.

#### *No Driver Found*

If the message, “Windows was unable to find a suitable driver for this device,” is displayed, this may indicate that the Nikon Capture 4 CD was not correctly inserted in the CD-ROM drive or that the correct search location was not specified. Click **Back** to return to the dialog shown in Step 6 where you can confirm that the correct location has been specified.



**Step 8**

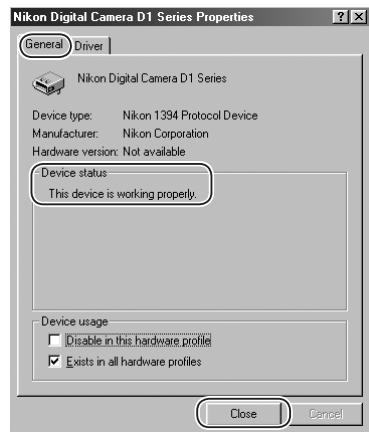
The dialog shown at right will be displayed; click **Finish**.

*Restart*

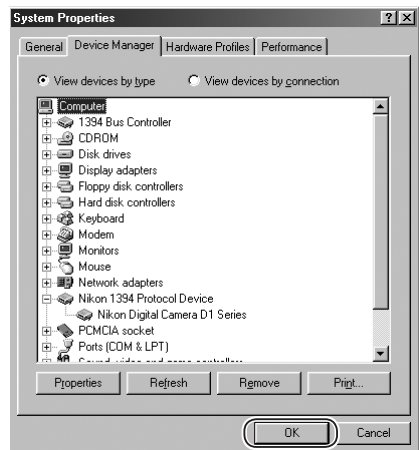
If a message is displayed prompting you to restart Windows, click **Restart**.

**Step 9**

Confirm that "This device is working properly" appears under "Device status" in the General Tab of the Nikon Digital Camera D1 Series Properties dialog. Click **Close**.

**Step 10**

Click **OK** to close the System Properties window.



***Troubleshooting***

- If “1394 Bus Controller” is not displayed in the Device Manager, if the IEEE 1394 board or card is listed under “Other Devices” or “Miscellaneous Devices,” or if the listing for the IEEE 1394 board or card is preceded by a red or yellow warning icon...

...the computer does not recognize the IEEE 1394 board or card. Refer to the documentation provided with your computer or IEEE 1394 board or card for information on registering the board or card with the system.

- If “1394 Bus Controller” is listed in the Device Manager but the entry for the Nikon D1X (or D1 or D1H) does not appear...

...check the following

- Is the camera on?
- Is the battery fully charged? If you are using an AC adapter (available separately), is it properly connected?
- Is the mode dial set to “PC”?
- Is the IEEE 1394 cable properly connected?

## Macintosh

This section explains how to install and uninstall Nikon Capture 4, how to connect your camera and insert the camera memory card in a card reader or PC card slot, and how to start Nikon Transfer.

# Installing Nikon Capture 4 on a Macintosh

Before installing Nikon Capture 4, make sure that your computer meets the following system requirements.

OS		Mac OS 9* (9.0.4, 9.1, or 9.2), Mac OS X (version 10.1.5 or later)
Model		iMac, iMac DV, Power Mac G3 (Blue & White), Power Mac G4 or later, iBook, PowerBook G3 or later
RAM (Nikon Capture 4)		• Mac OS X: 128MB (256MB or more recommended) • Mac OS 9: memory allocation of 32 MB or more to Nikon Capture 4 Camera Control, 128 MB or more to Nikon Capture 4 Editor
RAM (Nikon View 6)		64 MB or more (128 MB or more recommended with RAW images)
Hard-disk space		200 MB required for installation, with additional free disk space of 10 MB plus an amount equal to double the capacity of camera memory card available on start-up disk when Nikon Capture 4 is running.
Video resolution		800×600 pixels or more with 16-bit color (thousands of colors). 24-bit color (millions of colors) recommended.
Interface	IEEE 1394†	Built-in IEEE 1394 (Firewire) interface and IEEE 1394 cable required for connection to D1, D1x, and D1H
	USB‡	PCIU3 USB interface board (USB 2.0; Mac OS X only) or built-in USB interface required for connection to D100, D2H, and COOLPIX-series cameras with USB interface. Direct connection to other COOLPIX-series cameras not supported.
Supported cameras		• All functions, including Camera Control: D1, D1x, D1H, D100**, and D2H • All functions except Camera Control: USB-equipped Nikon COOLPIX cameras
Miscellaneous		• CD-ROM drive required for installation • Internet connection required for upload to the Web; e-mail program required when sending pictures by e-mail

\* With CarbonLib version 1.6 or later.  
† The camera may not function as expected when connected to an IEEE 1394 hub.  
‡ The camera may not function as expected when connected to a USB hub.  
\*\* Camera firmware version 2.00 or later.

## Before installing Nikon Capture 4

Before installing Nikon Capture 4:

- Uninstall any earlier versions of Nikon Capture or Nikon View.
- Exit all applications, including any virus-checking software that may be running.

## Before Starting Nikon Capture 4 Camera Control (D100/D2H Only)

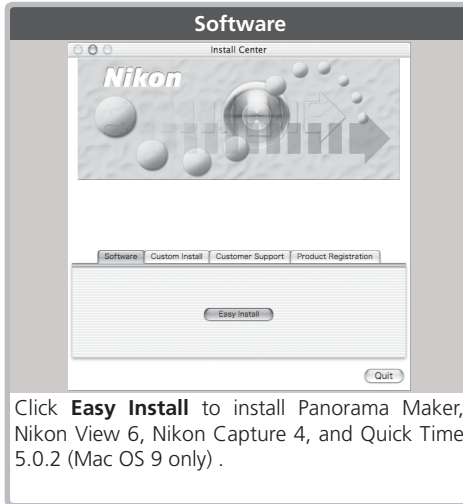
If you are using a D100 or D2H digital camera, set the **USB** option in the camera setup menu to **PTP** before starting Nikon Capture 4 Camera Control.

## Mac OS X

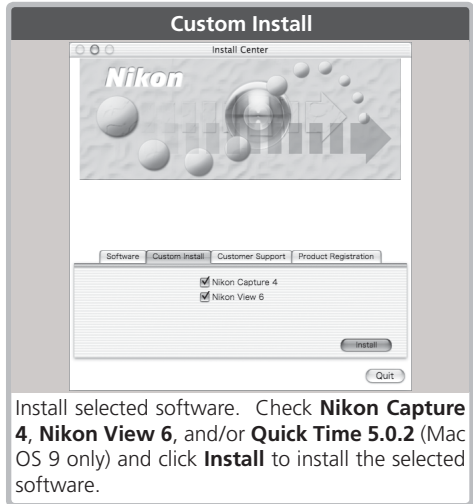
The administrator password is required when installing Nikon Capture 4 under Mac OS X.

When the Nikon Capture 4 CD is inserted into a CD-ROM drive on a computer running Mac OS 9.0.4, 9.1, or 9.2, a "Select Language" dialog will open automatically. To display the "Select Language" dialog in Mac OS X, open the Nikon Capture 4 CD and double-click the **Welcome** icon. Select a language from the list and click **Next** to open the Install Center window.

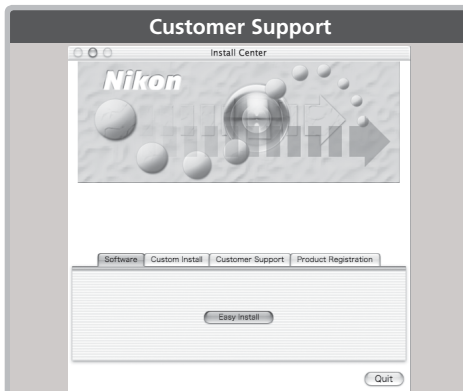
The Install Center window contains the following tabs. To interrupt installation and close the Install Center window, click **Quit**.



Click **Easy Install** to install Panorama Maker, Nikon View 6, Nikon Capture 4, and Quick Time 5.0.2 (Mac OS 9 only) .



Install selected software. Check **Nikon Capture 4**, **Nikon View 6**, and/or **Quick Time 5.0.2** (Mac OS 9 only) and click **Install** to install the selected software.

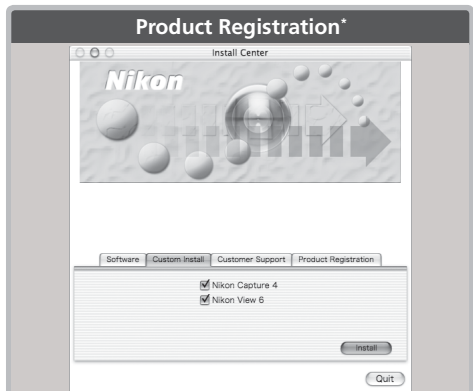


### Customer Support

Click the appropriate button to open your web browser to the Nikon Customer Support web site for your area (Internet connection required).

### ReadMe

Click **ReadMe** to view the ReadMe file. We recommend that you view the ReadMe file before installing Nikon Capture 4.



Click **Product Registration** to open your browser to the Nikon product registration web site (Internet connection required).

\*Not available in some areas.

## Installing Software

If you are installing software from the Software tab, you can begin installation simply by clicking the **Easy Install** button. If you are installing software from the Custom Install tab, you have to go through two steps: selecting the software and installing the software.

### Step 1: Select software (Custom Install tab Only)

Select the programs you want to install from the list in the Custom Install tab.

#### *Nikon Capture 4*

Check this option to install Nikon Capture 4.

#### *Nikon View 6*

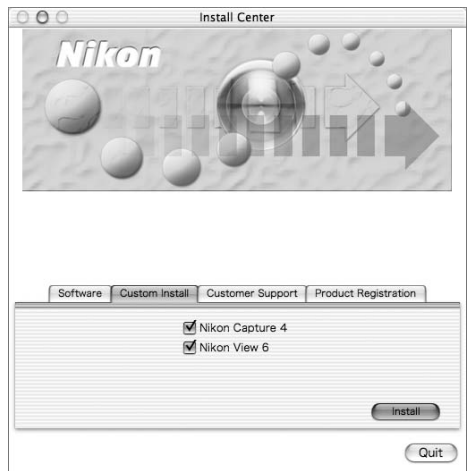
Check this option to install Nikon View 6.

#### *QuickTime 5.0.2* (Mac OS 9 only)

Check this option to install QuickTime 5.0.2 from Apple Computer.



Software tab



Custom Install tab

### Step 2: Install software

To begin installation, click **Easy Install** (Software tab) or **Install** (Custom Install tab). If more than one item is selected in the Custom Install tab, software will be installed in the order listed.

## Product Key

When you start Nikon Capture 4 Editor or Nikon Capture 4 Camera Control after installation, you may be prompted to enter a product key. Enter the Nikon Capture 4 product key exactly as given, including spaces.



## 2.1—Install Nikon Capture 4

If you opted to install Nikon Capture 4, it will be installed first.

### 2.1.1—Start the installer

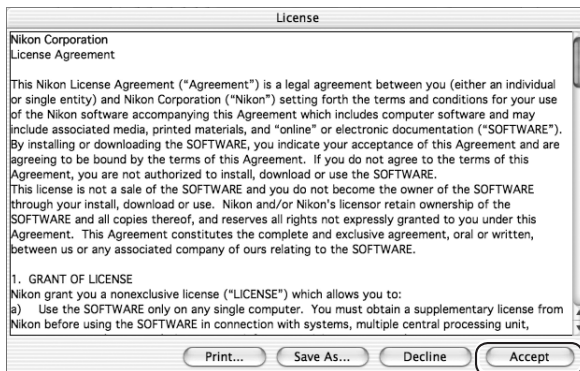
Installation of Nikon Capture 4 opens with the dialog shown below.



Click **Continue...** to start the installer.

### 2.1.2—Accept the license agreement

The license agreement will be displayed. After making sure that you have read and understood the contents of the agreement, click **Accept** to continue installation.

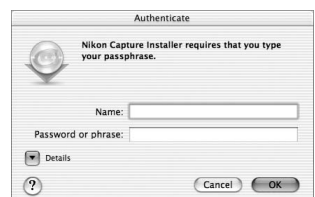


The ReadMe file will then be displayed. Take a few moments to view this file, which may contain important information that could not be included in the manual.

After viewing the ReadMe file, click **Continue...**

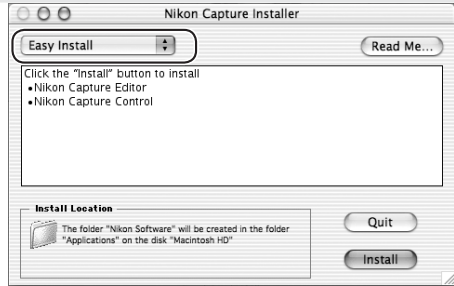
## Installing Nikon Capture 4 under Mac OS X

The administrator password is required when installing Nikon Capture 4 under Mac OS X.



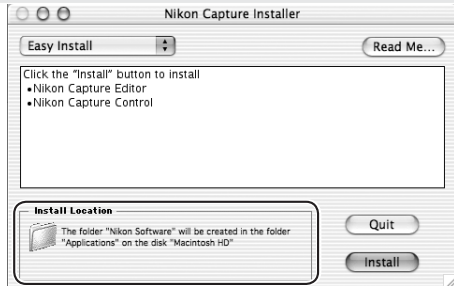
### 2.1.3—Choose Easy Install

Choose **Easy Install** from the pull-down menu in the top left corner of the Nikon Capture Installer dialog.



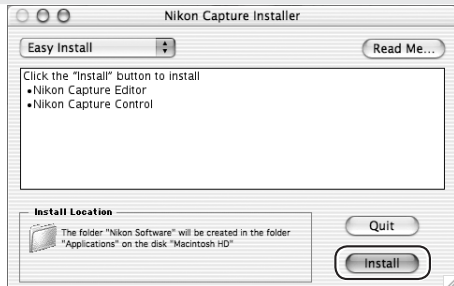
### 2.1.4—Confirm the install destination

The disk and folder to which Nikon Capture 4 will be installed are listed under “Install Location.”



### 2.1.5—Start the installer

Click **Install** in the Nikon Capture Installer dialog to begin installation of Nikon Capture 4. A progress meter will be displayed during installation.

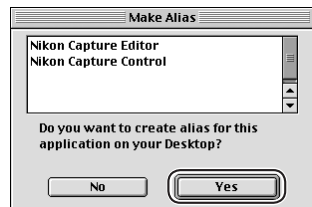


### ✎ Earlier Versions of Nikon Capture and Nikon View

Before you can install Nikon Capture 4, you must uninstall any earlier versions of Nikon Capture and Nikon View.

### ✎ Create Aliases (Mac OS 9 Only)

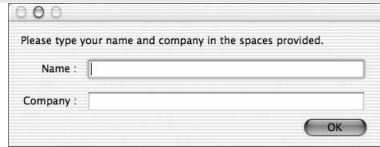
After you click Install in the Nikon Capture Installer dialog, a dialog will be displayed asking whether you wish to create aliases for Nikon Capture 4 Editor and Nikon Capture 4 Camera Control on the desktop. Click **Yes** to create these aliases, or **No** to exit without creating aliases.



### 2.1.6—Personalize your copy of Nikon Capture 4

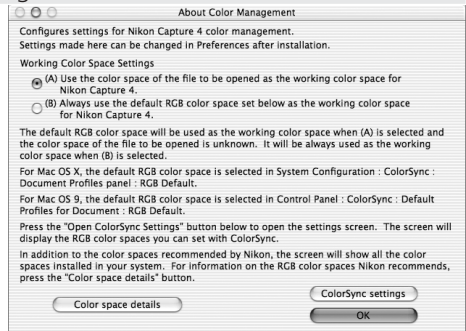
Enter your name and company (if applicable) to personalize your copy of Nikon Capture 4.

Clicking **OK** will display a confirmation dialog; if the information you entered is correct, click **Yes** to proceed to the next step. To change the information you entered, click **No**.

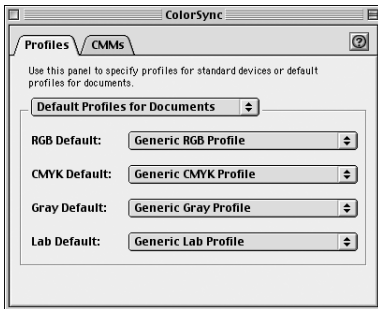


### 2.1.7—Choose default color management settings

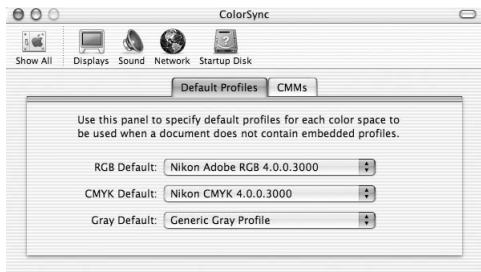
To use the color-space profile embedded in images opened in Nikon Capture 4, choose **(A) Use the color space of the file to be opened as the working color space for Nikon Capture 4**. To choose a default RGB color-space profile for the working color space in Nikon Capture 4, choose **(B) Always use the default RGB color space set below as the working color space for Nikon Capture 4**. Click **OK** to put changes into effect and proceed to the next step.



When **(B) Always use the default RGB color space set below as the working color space for Nikon Capture 4** is selected, the **ColorSync settings** button will be active. Click this button to display the ColorSync dialog. After opening the Document Profiles tab (Mac OS X) or opening the Profiles tab and selecting **Default Profiles for Documents** (Mac OS 9), choose the default working RGB color space from the **RGB Default** menu.

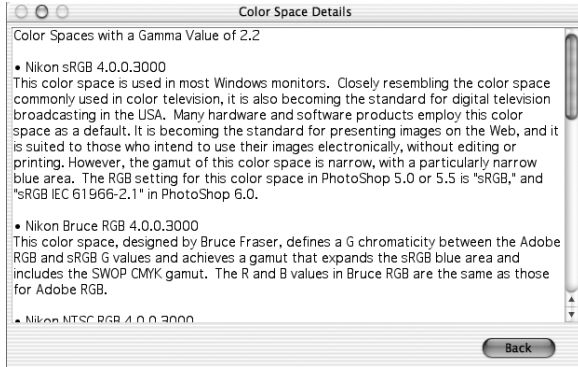


Mac OS 9



Mac OS X

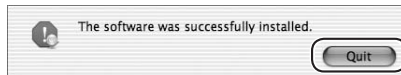
Clicking **Color space details** displays a description of the different color-space profiles. Use this explanation to help you choose a color-space profile.



The default output color-space profile can be changed at any time after installation in the Color Management tab of the Nikon Capture 4 Editor or Nikon Capture 4 Camera Control Preferences dialog.

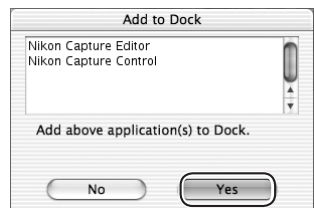
### 2.1.8—Complete installation of Nikon Capture 4

The following dialog is displayed when installation of Nikon Capture 4 is complete. Click **Quit** to proceed to the next step.



### Add to Dock (Mac OS X)

The dialog shown at right will be displayed when Nikon Capture 4 Editor and Nikon Capture 4 Camera Control are installed. Click **Yes** to add these components to the Dock, or **No** to exit without adding these components to the Dock.

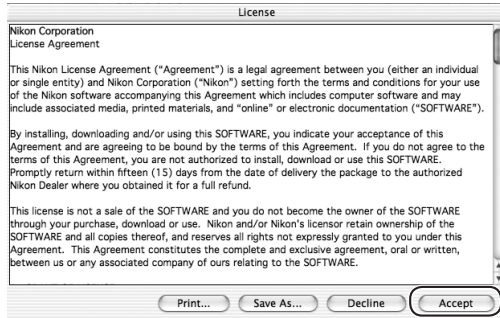


## 2.2—Install Nikon View 6

If you opted to install Nikon View 6 in Step 1, the Nikon View 6 installer will start.

### 2.2.1—Accept the license agreement

Installation of Nikon View 6 begins with the license agreement. After making sure that you have read and understood the contents of the agreement, click **Accept** to continue installation.



The ReadMe file will be displayed. Take a few moments to view this file, which may contain important information that could not be included in the manual.

After viewing the ReadMe file, click **Continue...**



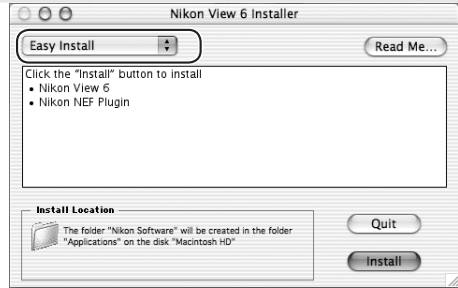
### Installing Nikon View 6 under Mac OS X

The administrator password is required when installing Nikon View 6 under Mac OS X.



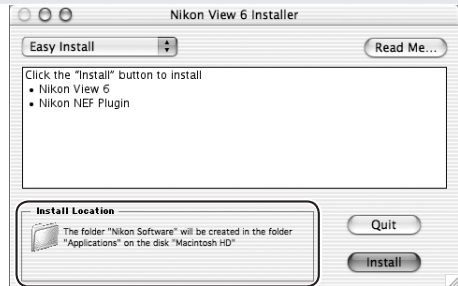
### 2.2.2—Choose Easy Install

Choose **Easy Install** from the pull-down menu in the top left corner of the Nikon View 6 Installer dialog.



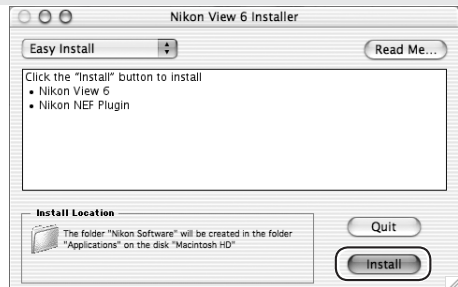
### 2.2.3—Confirm the install destination

The disk and folder to which Nikon View 6 will be installed are listed under “Install Location.”



### 2.2.4—Start the installer

Click **Install** in the Nikon View 6 Installer dialog to begin installation of Nikon View 6. A progress meter will be displayed during installation.

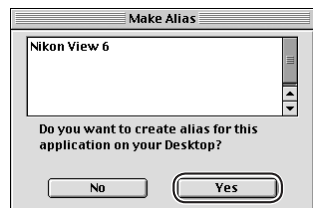


### Earlier Versions of Nikon Capture and Nikon View

Before you can install Nikon Capture 4, you must uninstall any earlier versions of Nikon Capture and Nikon View. Note that Nikon View 6 does not support connection of COOLPIX 950, 910, 900, 800, or 700 digital cameras. It can however be used to view photographs taken with these cameras if the camera memory card is inserted in a card reader or PC card slot.

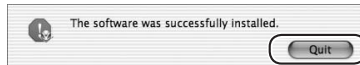
### Create an Alias (Mac OS 9 Only)

After you click **Install** in the Nikon View 6 Installer dialog, a dialog will be displayed asking whether you wish to create an alias for Nikon View 6 on the desktop. Click **Yes** to create an alias, or **No** to exit without creating an alias.



### 2.2.5—Complete installation of Nikon View 6

The following dialog is displayed when installation of Nikon View 6 is complete. Click **Quit** to proceed with installation of QuickTime 5.0.2, if selected (Mac OS 9 only).



### 2.2.6—Restart the computer (Mac OS X only)

The dialog shown below when installation is complete. Click **Restart** to restart your computer.

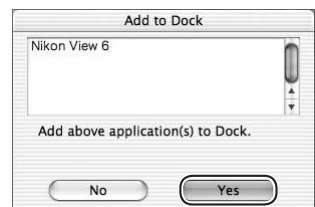


### Multiple Copies of Adobe Photoshop

If more than one copy of Adobe Photoshop 5.0 or later is installed, a dialog will be displayed prompting you to select one of these copies for use with the NEF plug-in. Select the desired copy from the list.

### Add to Dock (Mac OS X Only)

When Nikon View 6 is installed, the dialog shown at right will appear asking if you want to add Nikon View 6 to the Dock. Click **Yes** to register Nikon View 6, or **No** to exit without adding Nikon View 6 to the Dock.



### 2.3—Install QuickTime 5.0.2 (Mac OS 9 Only)

If you opted to install QuickTime 5.0.2 in Step 1, the QuickTime installer will start.

#### 2.3.1—Read the welcome message

The Welcome to QuickTime 5 dialog will be displayed. Click **Continue**.



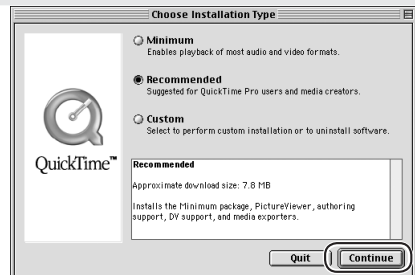
#### 2.3.2—Accept the license agreement

The license agreement will be displayed. After making sure that you have read and understood the contents of the agreement, click **Agree** to continue installation.



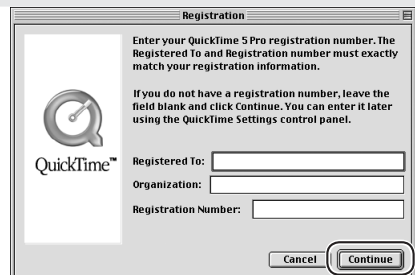
#### 2.3.3—Choose the installation type

The Choose Installation Type dialog will be displayed. Select **Recommended** and click **Continue**.



#### 2.3.4—Skip registration

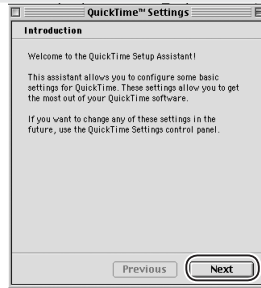
The Registration dialog will be displayed. Leave the entry fields blank and click **Continue**.





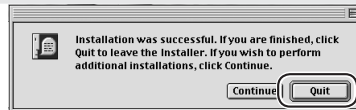
### 2.3.5—Adjust QuickTime settings

The first of three QuickTime setup dialogs will be displayed. Click **Next** after reading the information at right. The Browser Plug-in dialog will be displayed, where you can adjust MIME settings to choose the QuickTime plug-in for movie playback in Nikon Browser. After adjusting settings, click **Next** to proceed to the Summary dialog. Check **Open QuickTime player** to start QuickTime player when installation is complete. Click **Finish** to proceed to the next step.



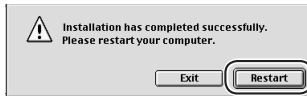
### 2.3.6—Complete installation of QuickTime 5.0.2

The dialog shown at right is displayed when installation of QuickTime 5.0.2 is complete. Click **Continue** to proceed to the next step.



### 2.4—Restart the computer

When installation of all components is complete, the dialog shown below will be displayed. Click **Restart** to end installation and restart your computer.



### Adjusting QuickTime Settings

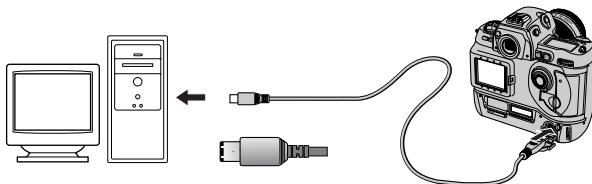
QuickTime settings can be changed at any time after installation using the QuickTime Settings control panel.

## Connecting to a Computer

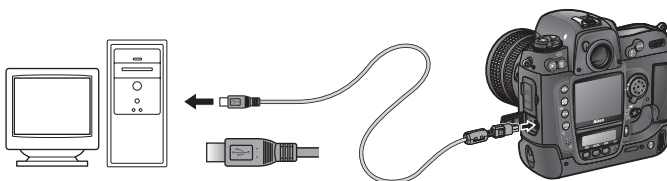
Before connecting your camera to a Macintosh computer for the first time, make sure that you install Nikon Capture 4. After installing Nikon Capture 4, turn the camera on and connect it to the computer, or insert the memory card into a card reader or a PC card slot.

For more information about connecting your camera to a computer, see the documentation provided with your camera.

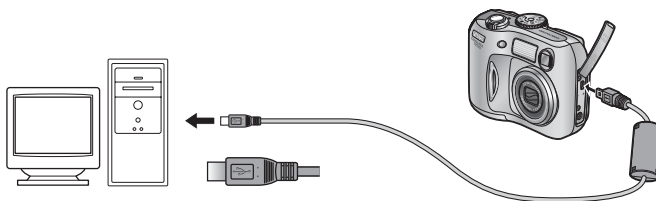
### *D1/D1x/D1H (IEEE 1394/Firewire Interface)*



### *D100/D2H (USB Interface)*



### *COOLPIX Series (USB Interface)*



### **✓ Use a Reliable Power Source**

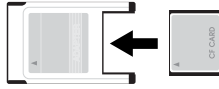
To ensure that data transfer is not interrupted, be sure that the battery is fully charged. If in doubt, charge the battery before use or use an AC adapter (available separately). If the battery is exhausted during transfer, transfer will be interrupted and data may be lost.

### Using a PC Card Slot

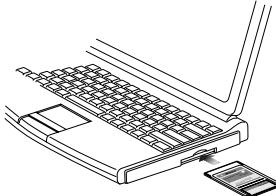
When inserted in a PC-card adapter (available separately), the camera memory card functions as a Type II PCMCIA ATA card, allowing images to be read from the card.

#### *Inserting a Memory Card*

Remove the memory card from the camera and insert it in the adapter.



Insert the adapter into a PCMCIA TYPE II ATA card slot on your computer. For more information on inserting the adapter, see the documentation provided with your computer.



Depending on your computer's operating environment, you may need to install software, register the card adapter, or adjust OS settings when the adapter is inserted into the card slot. For more information, refer to the instruction manual for your operating system.

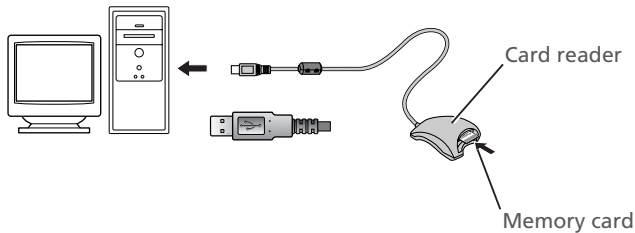
### Using a Card Reader

Images on the memory card can also be viewed using a card reader.

#### *Inserting a Memory Card*

After removing the memory card from the camera, insert it in the card reader and connect the reader to the computer. See the documentation provided with the card reader for more information on connecting it to a computer.

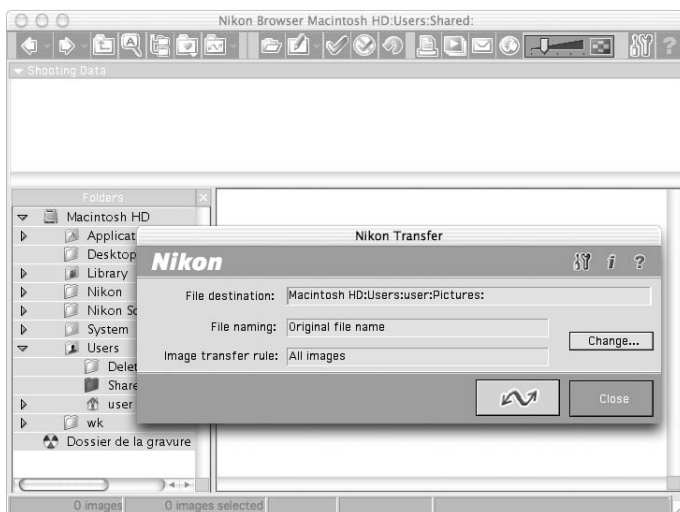
#### *Card reader (USB interface)*



## Starting Nikon Transfer

Once installation is complete, Nikon Transfer will start automatically whenever your Nikon digital camera is connected to your computer and turned on, or when the camera memory card is inserted in a PC card slot or in a card reader connected to the computer. Nikon Browser will also start, ready to display any pictures transferred from the camera. Note that only one camera can be connected to the computer at a time.

For information on using other components of Nikon Capture 4, see the *Nikon Capture 4 User's Manual*.



### Auto Start

Nikon Transfer will start automatically when:

- A supported camera is connected while on and with a memory card in place
- A supported camera with a memory card in place is connected and then turned on
- A memory card from a supported camera (COOLPIX 600 excluded) is inserted in a card reader or PC card slot

## Starting Nikon Transfer under Mac OS X (10.1.5) or Later

If the operating system on your computer is Mac OS X, we recommend that you follow the steps below before connecting your camera to the computer for the first time.

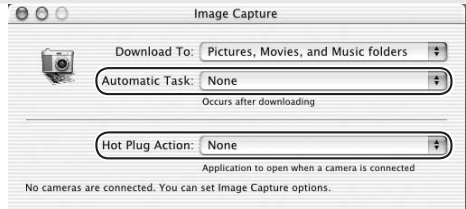
### 1 Start Image Capture

Select **Applications** from the Finder **Go** menu and double-click the **Image Capture** icon. The Image Capture dialog will be displayed.

### 2 Adjust Image Capture settings

*Mac OS X (10.1.5)*

Select **None** from the **Automatic Task** and **Hot Plug Action** menus and close the Image Capture dialog. If you install Apple iPhoto software after installing Nikon View, repeat this step to prevent both iPhoto and Nikon View from starting when the camera is connected.

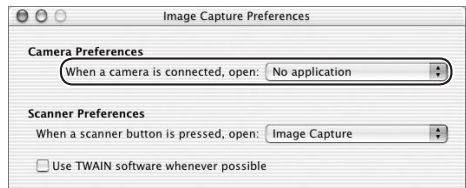


*Mac OS X (10.2 or Later):*

Select **Preferences...** from the application menu.



The Image Capture "Preferences" dialog will be displayed. In the "Camera Preferences" area, select **No application** for **When a camera is connected, open**. **When a camera is connected, open**.



## Starting Image Capture

You can also start Image Capture by double-clicking its icon in the Applications folder.

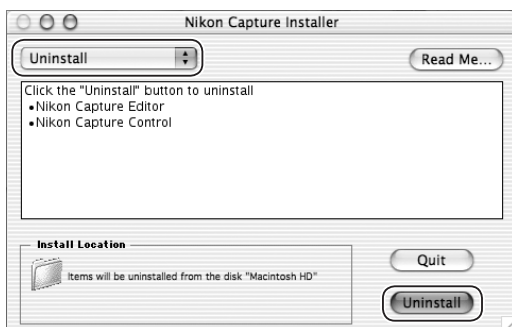
# Uninstall

## *Uninstalling Nikon Capture 4 and Nikon View 6*

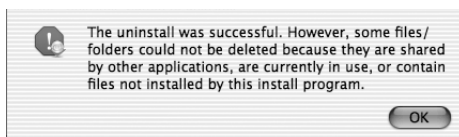
This section describes how to uninstall the Macintosh versions of Nikon Capture 4 and Nikon View 6.

### Uninstalling Nikon Capture 4

- 1 Insert the Nikon Capture 4 CD into a CD-ROM drive and start the Nikon Capture 4 installer as described on pages 101–103 of “Installing Nikon Capture 4 on a Macintosh.”
- 2 Select **Uninstall** from the menu at the top left corner of the Nikon Capture Installer dialog.

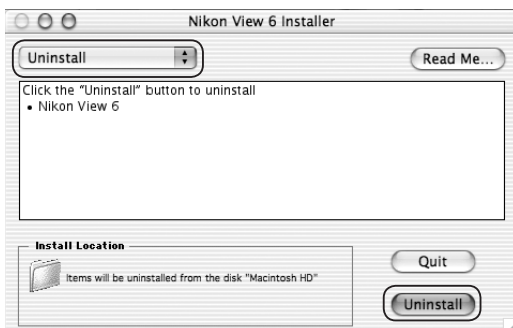


- 3 Click the **Uninstall** button at the bottom right corner of the Nikon Capture Installer dialog.
- 4 Once Nikon Capture 4 has been removed from your system, the dialog shown below will be displayed. Click **OK**.

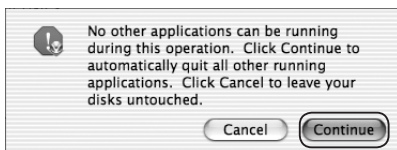


## Uninstalling Nikon View 6

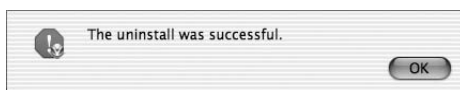
- 1 Insert the Nikon Capture 4 CD into a CD-ROM drive and start the Nikon View 6 installer as described on pages 101–103 and 107 of “Installing Nikon Capture 4 on a Macintosh.”
- 2 Select **Uninstall** from the menu at the top left corner of the Nikon View Installer dialog.



- 3 Click the **Uninstall** button at the bottom right corner of the Nikon View Installer dialog.
- 4 Click **Continue**. Any other applications that may be running will quit automatically, and the installer will begin the process of removing Nikon View 6.



- 5 Once Nikon View 6 has been removed from the system, the dialog shown below will be displayed. Click **OK**.



No reproduction in any form of this manual, in whole or in part (except for brief quotation in critical articles or reviews), may be made without written authorization from NIKON CORPORATION.